



Public Safety Issues

"I'm worried about the vandalism in the county."

A Summary of Santa Cruz County's Public Safety, 2003

Our Goals

By the Year 2004,

Crime within Santa Cruz County will continue to decrease, and residents will have increased confidence in their personal safety at home and in the community.

By the Year 2004,

Children in Santa Cruz County will live in safer families and communities.

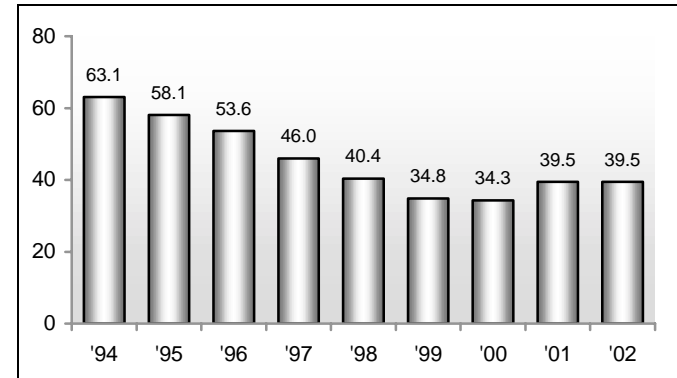
Year nine of the Santa Cruz County Community Assessment Project explored issues related to public safety in the County, using both primary and secondary data sources. Together, these two sets of data serve as a snapshot of the perceptions, as well as the realities, of public safety issues in Santa Cruz County.

The most recent edition of the Santa Cruz County Criminal Justice Profile shows stability in the overall County crime rate. After declining for seven consecutive years, the overall crime rate increased from



34.3 to 39.5 crimes per 1,000 residents in 2001, and has held steady at 39.5 in 2002. The statewide crime rate has increased during this period, from 39.1 per 1,000 residents in 2001 to 39.8 in 2002.

Crime Rate

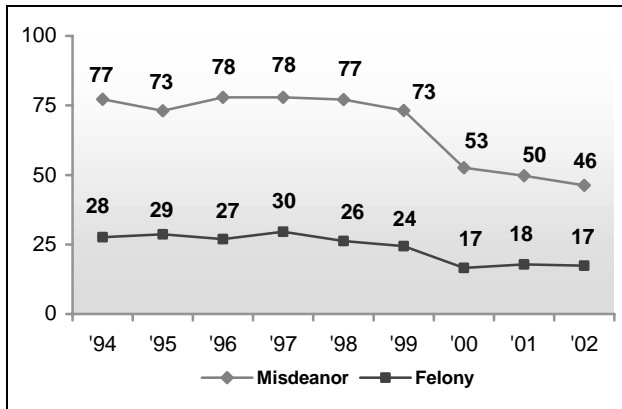


✓ Crime rate per 1,000 people

The number and rate of violent crimes has decreased over the past year, from 4.7 crimes per 1,000 residents in 2001 to 4.3 in 2002. Nearly all types of violent crimes decreased in the past year, including a 54% decrease in homicides (from 13 homicides in 2001 to 6 in 2002). Contrarily, the number and rate of property crimes has increased over the past year, from 34.8 crimes per 1,000 residents in 2001 to 35.3 in 2002. Among property crimes, arson showed the highest percentage increase, rising from 58 reported cases in 2001 to 72 cases in 2002.

For the fifth consecutive year, Santa Cruz County has experienced a decrease in the overall rate of felony and misdemeanor arrests among youth, dropping to the lowest level in the past nine years. Juvenile misdemeanor arrests have shown the sharpest decline, dropping nearly 7% from 49.7 to 46.3 arrests per 1,000 juveniles between the ages of 10 – 17. Juvenile felony arrests dropped more than 2% in 2002, after experiencing a slight increase in 2001. Admissions to juvenile hall facilities have also decreased to their lowest level in the past nine years, dropping from 47.6 per 1,000 juveniles in 2001 to 35.0 in 2002.

Juvenile Arrest Rate



✓ Juvenile arrest rate

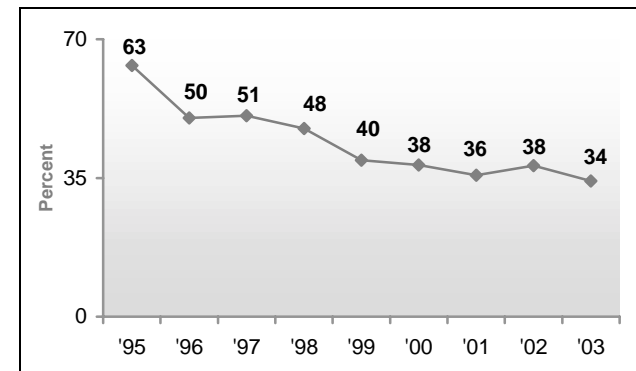
Another factor that directly influences the level of public safety is the availability, effectiveness, and responsiveness of law enforcement officers and agencies. Between 2001 and 2002, the number of sworn officers in Santa Cruz County has remained fairly stable, with slight decreases in the Capitola Police Department and County Sheriff's Department, slight increases in the Scotts Valley and Watsonville Police Departments, and no change in the Santa Cruz Police Department. The number of residents per sworn officer varies widely, from a low of 523 residents per officer in Scotts Valley, to a high of 996 residents per officer in the unincorporated areas of the County (although it should be noted, the unincorporated area is a very large portion of the County).



Perceptions about law enforcement effectiveness rose slightly in the last year. The percentage of survey respondents who indicated that they thought law enforcement is “very effective” increased from 38% to 41% in 2003. Further, police response times for Priority One calls (involving a person or an accident) have decreased in the cities of Santa Cruz, Scotts Valley, and Watsonville, as well as for the County overall. Scotts Valley had the quickest response time, arriving at the scene an average of 2:42 minutes after the call was placed.

Approximately one-third of survey respondents (34.2%) indicated that they were “very concerned” about crime in Santa Cruz County in 2003. This percentage reflects the lowest concern about crime in the past nine years. However, disparities exist within regions and ethnic groups. For example, Latino's were significantly more likely to respond that they were “very concerned” about crime than Caucasians (58% vs. 25%) and South County residents were significantly more likely to respond that they were “very concerned” about crime than residents of either North County or San Lorenzo Valley (42% vs. 31% or 24%).

Concerned About Crime



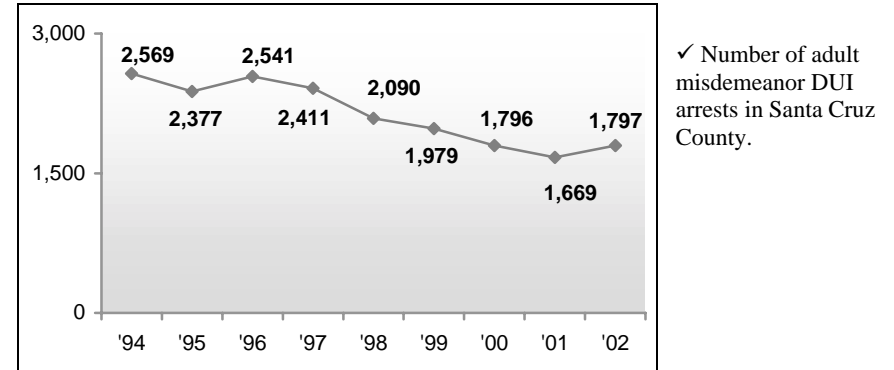
✓ Respondents who reported that they are very concerned about crime in Santa Cruz County

Concerns about family violence in Santa Cruz County have remained stable, with 55% of respondents indicating that they are “very concerned.” However, those earning lower family incomes (\$34,999 or less) were significantly more likely to indicate that they were “very

concerned” than those earning higher incomes (\$65,500 and higher). Although there was a change in the reporting system that tracks domestic violence calls for assistance, which complicates any comparisons with historical data, other measures of family violence show decreases in substantiated cases of child abuse and reported cases of elder abuse. Placements into foster care also decreased in 2002 to the lowest rate in seven years.

Adult felony Driving Under the Influence (DUI) arrests decreased in the County by 2.1% while misdemeanor DUI arrests rose 7.7% in 2002. Juvenile misdemeanor DUI arrests decreased by nearly 43% (31 arrests in 2001 vs. 18 in 2002).

Adult Misdemeanor DUI Arrests



Juvenile misdemeanor drug arrests rose 9.6% in 2002 to a total of 240 arrests vs. 219 in 2001.

Crime Rate - County

The specific crimes that are tracked are used to determine the rise or fall in the crime rate both locally and nation-wide.



Homicide: the willful (non-negligent) killing of one human being by another. Murder and non-negligent manslaughter are included in this definition.

Rape: the carnal knowledge of a female forcibly and against her will.

Robbery: the taking or attempting to take anything of value from the custody, care, or control of a person or persons by force or threat of force or violence and/or by creating fear in the victim.

Aggravated Assault: an unlawful attack or attempted attack by one person upon another for the purpose of inflicting severe or aggravated

bodily injury. This type of assault is usually accompanied by the use of a weapon or by means likely to produce death or great bodily harm.

Burglary: the unlawful entry of a structure to commit a felony or a theft.

Motor Vehicle Theft: the theft or attempted theft of a motor vehicle.

Larceny: the unlawful taking, carrying, leading, or riding away of property from the possession of another (except embezzlement, fraud, forgery, and worthless checks).

Arson: any willful or malicious burning or attempt to burn, with or without intent to defraud, a dwelling house, public building, motor vehicle or aircraft, personal property of another, etc.

Santa Cruz County

Violent Crimes	1994	1995	1996	1997	1998	1999	2000	2001	2002	% Change
Homicide	6	8	10	4	9	4	9	13	6	-53.8
Rape	84	77	66	69	58	67	102	113	109	-3.5
Robbery	305	286	289	249	188	165	171	212	238	12.3
Aggravated Assault	1,282	1,386	1,375	955	1,139	829	905	865	746	-13.8
Total Violent Crimes	1,677	1,757	1,740	1,277	1,394	1,065	1,187	1,203	1,099	-8.6
Violent Crime Rate	7.1	7.3	7.2	5.2	5.6	4.2	4.7	4.7	4.3	-8.5

Source: State of California Department of Justice, California Criminal Justice Profile, 2002; State of California, Department of Finance, E-4 Population Estimates for Cities, Counties and the State, 2001-2003, with 2000 DRU Benchmark. Sacramento, California, May 2003.

Note: In 1999, the Sheriff's Department changed the method of categorizing domestic violence cases to comply with California Penal Code definitions. Cases that would have been classified as assault before 1999 are now being appropriately classified as domestic violence cases.

QUALITY OF LIFE INDICATOR 77

Crime Rate - County

Santa Cruz County

Property Crimes	1994	1995	1996	1997	1998	1999	2000	2001	2002	% Change
Burglary	2,636	2,486	2,194	1,901	1,629	1,597	1,468	1,543	1,676	8.6
Larceny	9,923	8,874	8,177	7,516	6,422	5,573	5,516	6,820	6,844	0.4
Motor Vehicle Theft	680	726	811	506	540	442	520	547	517	-5.5
Arson	90	97	73	87	66	84	44	58	72	24.1
Total Property Crimes	13,329	12,183	11,255	10,012	8,657	7,696	7,548	8,968	9,109	1.6
Property Crime Rate	56.1	50.8	46.4	40.8	34.8	30.5	29.6	34.8	35.3	1.4

Total	1994	1995	1996	1997	1998	1999	2000	2001	2002	% Change
Crimes	15,006	13,940	12,995	11,289	10,051	8,761	8,735	10,171	10,208	0.4
Population	237,800	240,000	242,500	245,400	249,000	252,100	255,000	257,500	258,400	0.3
County Crime Rate	63.1	58.1	53.6	46.0	40.4	34.8	34.3	39.5	39.5	0.0
State Crime Rate	61.9	58.2	52.0	48.5	43.1	37.8	37.3	39.1	39.8	1.8

Source: State of California Department of Justice, California Criminal Justice Profile, 2002; State of California, Department of Finance, E-4 Population Estimates for Cities, Counties and the State, 2001-2003, with 2000 DRU Benchmark. Sacramento, California, May 2003.

The crime rate is calculated by dividing the number of reported crimes by the total population and then multiplying the result by 1,000. The County totals include the California Highway Patrol, U.C. Santa Cruz, Santa Cruz Mountains Department of Parks and Recreation and the Union Pacific Railroad.

Crime Rate - Capitola

City of Capitola

Violent Crime	1994	1995	1996	1997	1998	1999	2000	2001	2002	% Change
Homicide	0	0	1	0	0	0	0	0	0	N/a
Rape	2	1	1	2	2	2	2	4	12	200.0
Robbery	9	12	13	12	9	11	11	10	17	70.0
Aggravated Assault	77	45	46	34	43	51	49	46	38	-17.4
Total Violent Crimes	88	58	61	48	54	64	62	60	67	11.7
Violent Crime Rate	8.4	5.7	6.0	4.8	5.3	6.4	6.2	5.9	6.6	11.9

Property Crime	1994	1995	1996	1997	1998	1999	2000	2001	2002	% Change
Burglary	75	84	85	63	43	46	75	105	102	-2.9
Larceny	1,041	1,029	984	849	746	649	519	684	787	15.1
Motor Vehicle Theft	39	42	42	29	18	8	17	33	28	-15.2
Arson	1	5	2	1	1	3	3	0	1	N/a
Total Property Crimes	1,156	1,160	1,113	942	808	706	614	822	918	11.7
Property Crime Rate	116.2	114.9	110.2	94.2	80.4	70.6	61.2	81.4	90.9	11.7

Total Crimes	1,244	1,218	1,174	990	862	770	676	882	985	11.7
Population	9,950	10,100	10,100	10,000	10,050	10,050	10,000	10,100	10,100	0.0
Capitola Crime Rate	125.0	120.6	116.2	99.0	85.8	77.0	67.4	87.3	97.5	11.7
County Crime Rate	63.1	58.1	53.6	46.0	40.4	34.8	34.3	39.5	39.5	0.0
State Crime Rate	61.9	58.2	52.0	48.5	43.1	37.8	37.3	39.1	39.8	1.8

Source: State of California Department of Justice, California Criminal Justice Profile, 2002; State of California, Department of Finance, E-4 Population Estimates for Cities, Counties and the State, 2001-2003, with 2000 DRU Benchmark. Sacramento, California, May 2003.

The crime rate is calculated by dividing the number of reported crimes by the total population and then multiplying the result by 1,000.

QUALITY OF LIFE INDICATOR 77

Crime Rate - Santa Cruz

City of Santa Cruz

Violent Crime	1994	1995	1996	1997	1998	1999	2000	2001	2002	% Change
Homicide	3	4	2	1	2	1	3	0	4	N/a
Rape	20	14	12	19	7	19	48	51	43	-15.7
Robbery	130	104	105	85	68	79	72	87	97	11.5
Aggravated Assault	347	363	460	404	322	283	421	399	316	-20.8
Total Violent Crimes	500	485	579	509	399	382	544	537	460	-14.3
Violent Crime Rate	9.8	9.4	11.2	9.8	7.5	7.1	10.0	9.9	8.4	-15.2

Property Crime	1994	1995	1996	1997	1998	1999	2000	2001	2002	% Change
Burglary	756	604	601	479	343	358	400	478	534	11.7
Larceny	3,294	2,755	2,761	2,371	1,977	1,734	1,823	2,322	2,371	2.1
Motor Vehicle Theft	188	229	232	237	156	140	197	209	204	-2.4
Arson	20	18	27	37	25	33	10	19	27	42.1
Total Property Crimes	4,258	3,606	3,621	3,124	2,503	2,265	2,430	3,028	3,136	3.6
Property Crime Rate	83.8	70.2	70.0	60.1	47.2	41.9	44.6	55.6	57.3	3.1

Total Crimes	4,758	4,091	4,200	3,633	2,902	2,647	2,974	3,565	3,596	0.9
Population	50,800	51,400	51,700	52,000	53,000	54,100	54,500	54,500	54,700	0.4
Santa Cruz City Crime Rate	93.7	78.6	81.2	69.9	54.8	48.9	54.6	65.4	65.7	0.5
County Crime Rate	63.1	58.1	53.6	46.0	40.4	34.8	34.3	39.5	39.5	0.0
State Crime Rate	61.9	58.2	52.0	48.5	43.1	37.8	37.3	39.1	39.8	1.8

Source: State of California Department of Justice, California Criminal Justice Profile, 2002; State of California, Department of Finance, E-4 Population Estimates for Cities, Counties and the State, 2001-2003, with 2000 DRU Benchmark. Sacramento, California, May 2003.

The crime rate is calculated by dividing the number of reported crimes by the total population and then multiplying the result by 1,000.

Crime Rate - Scotts Valley

City of Scotts Valley

Violent Crime	1994	1995	1996	1997	1998	1999	2000	2001	2002	% Change
Homicide	0	0	0	0	0	0	0	0	0	N/a
Rape	1	1	1	3	2	1	2	1	1	0.0
Robbery	5	2	3	3	3	2	4	3	1	-66.7
Aggravated Assault	24	18	23	16	25	25	38	34	10	-70.6
Total Violent Crimes	30	21	27	22	30	28	44	38	12	-68.4
Violent Crime Rate	3.1	2.1	2.7	2.1	2.8	2.5	3.9	3.3	1.0	-69.7

Property Crime	1994	1995	1996	1997	1998	1999	2000	2001	2002	% Change
Burglary	90	82	83	59	36	69	67	70	45	-35.7
Larceny	370	363	319	262	247	227	252	281	260	-7.5
Motor Vehicle Theft	22	16	12	14	4	8	8	16	12	-25.0
Arson	11	7	8	6	7	6	0	2	2	0.0
Total Property Crimes	493	468	422	341	294	310	327	369	319	-13.6
Property Crime Rate	51.4	47.3	41.8	32.8	27.0	27.9	28.8	32.2	27.7	-14.0

Total Crimes	523	489	449	363	324	338	371	407	331	-18.7
Population	9,575	9,875	10,100	10,400	10,850	11,000	11,350	11,450	11,500	0.4
Scotts Valley Crime Rate	54.6	49.5	44.5	34.9	29.9	30.5	32.7	35.5	28.8	-18.9
County Crime Rate	63.1	58.1	53.6	46.0	40.4	34.8	34.3	39.5	39.5	0.0
State Crime Rate	61.9	58.2	52.0	48.5	43.1	37.8	37.3	39.1	39.8	1.8

Source: State of California Department of Justice, California Criminal Justice Profile, 2002; State of California, Department of Finance, E-4 Population Estimates for Cities, Counties and the State, 2001-2003, with 2000 DRU Benchmark. Sacramento, California, May 2003.

The crime rate is calculated by dividing the number of reported crimes by the total population and then multiplying the result by 1,000.

QUALITY OF LIFE INDICATOR 77

Crime Rate - Watsonville

City of Watsonville

Violent Crime	1994	1995	1996	1997	1998	1999	2000	2001	2002	% Change
Homicide	1	1	6	0	3	2	1	4	0	-100.0
Rape	14	18	10	11	17	8	19	19	23	21.1
Robbery	83	98	87	93	63	50	59	81	84	3.7
Aggravated Assault	286	412	455	375	388	279	224	205	215	4.9
Total Violent Crimes	384	529	558	479	471	339	303	309	322	4.2
Violent Crime Rate	10.9	14.6	14.9	11.8	11.3	7.9	6.9	6.6	6.8	3.0

Property Crime	1994	1995	1996	1997	1998	1999	2000	2001	2002	% Change
Burglary	357	359	378	393	305	334	305	296	293	-1.0
Larceny	1,839	1,747	1,383	1,602	1,250	1,039	1,149	1,519	1,533	0.9
Motor Vehicle Theft	174	189	154	215	149	119	134	126	111	-11.9
Arson	8	9	7	14	6	7	2	6	9	50.0
Total Property Crimes	2,378	2,304	1,922	2,226	1,710	1,499	1,590	1,947	1,946	-0.1
Property Crime Rate	67.5	63.4	51.5	54.6	41.0	35.1	36.1	41.3	40.9	-1.0

Total Crimes	2,762	2,833	2,480	2,703	2,181	1,838	1,893	2,256	2,268	0.5
Population	35,250	36,350	37,350	40,750	41,700	42,700	44,100	47,100	47,600	1.1
Watsonville Crime Rate	78.4	77.9	66.4	66.3	52.3	43.0	42.9	47.9	47.6	-0.6
County Crime Rate	63.1	58.1	53.6	46.0	40.4	34.8	34.3	39.5	39.5	0.0
State Crime Rate	61.9	58.2	52.0	48.5	43.1	37.8	37.3	39.1	39.8	1.8

Source: State of California Department of Justice, California Criminal Justice Profile, 2002; State of California, Department of Finance, E-4 Population Estimates for Cities, Counties and the State, 2001-2003, with 2000 DRU Benchmark. Sacramento, California, May 2003.

The crime rate is calculated by dividing the number of reported crimes by the total population and then multiplying the result by 1,000.

Crime Rate - Unincorporated Areas

Unincorporated Areas (Sheriff's Department)

Violent Crime	1994	1995	1996	1997	1998	1999	2000	2001	2002	% Change
Homicide	2	3	1	3	4	1	4	9	2	-77.8
Rape	46	40	43	34	28	34	27	39	28	-28.2
Robbery	77	69	68	56	44	19	25	31	38	22.6
Aggravated Assault	536	513	391	406	351	182	163	164	160	-2.4
Total Violent Crimes	661	625	503	499	427	236	219	243	228	-6.2
Violent Crime Rate	5.0	4.7	3.8	3.8	3.2	1.8	1.6	1.8	1.7	-5.6

Property Crime	1994	1995	1996	1997	1998	1999	2000	2001	2002	% Change
Burglary	1,204	1,268	964	907	851	749	599	570	635	11.4
Larceny	2,812	2,567	2,730	2,432	1,922	1,609	1,560	1,696	1,592	-6.1
Motor Vehicle Theft	22	1	15	11	11	15	12	10	10	0.0
Arson	49	49	29	29	23	33	28	30	30	0.0
Total Property Crimes	4,087	3,885	3,738	3,379	2,807	2,406	2,199	2,306	2,267	-1.7
Property Crime Rate	31.0	29.4	28.1	25.6	21.1	18.0	16.3	17.2	16.9	-1.7

Total Crimes	4,748	4,510	4,241	3,878	3,234	2,642	2,418	2,549	2,495	-2.1
Population	131,800	132,200	133,000	132,000	132,800	133,700	135,100	134,300	134,500	0.1
Unincorporated Crime Rate	36.0	34.1	31.9	29.4	24.4	19.8	17.9	19.0	18.6	-2.1
County Crime Rate	63.1	58.1	53.6	46.0	40.4	34.8	34.3	39.5	39.5	0.0
State Crime Rate	61.9	58.2	52.0	48.5	43.1	37.8	37.3	39.1	39.8	1.8

Source: State of California Department of Justice, California Criminal Justice Profile, 2002; State of California, Department of Finance, E-4 Population Estimates for Cities, Counties and the State, 2001-2003, with 2000 DRU Benchmark. Sacramento, California, May 2003.

The crime rate is calculated by dividing the number of reported crimes by the total population and then multiplying the result by 1,000.

Unincorporated areas are covered by the Santa Cruz County Sheriff's Office and include all areas except the cities of Capitola, Santa Cruz, Scotts Valley, and Watsonville.

Note: In 1999, the Sheriff's Department changed the method of categorizing domestic violence cases to comply with California Penal Code definitions. Cases that would have been classified as assault before 1999 are now being appropriately classified as domestic violence cases.

QUALITY OF LIFE INDICATOR 78

Jail Population Characteristics

As the number of people under criminal justice supervision continues to rise, more attention is being given to decreasing recidivism, the repeated or habitual relapse into criminal activities.

Average Daily Jail Population County

Facility	1995	1996	1997	1998	1999	2000	2001	2002	% Change
Water Street Facility	365	341	373	375	322	337	353	370	4.8
Blaine Street Facility	19	21	28	33	31	24	18	22	22.2
Rountree Lane Facilities	124	176	200	218	230	219	198	192	-3.0

Number of Repeat Offenders

Prisoner Type	1995	1996	1997	1998	1999	2000	2001	2002	% Change
Total Inmates	7,090	7,154	7,679	7,141	8,162	8,566	8,156	8,225	0.8
Repeat Offenders	6,057	6,111	6,670	6,079	7,277	5,830	5,635	5,562	-1.3
Percent Who Were Repeat Offenders	85.0	86.0	87.0	85.0	89.0	68.1	69.1	67.6	-2.2

Source: Santa Cruz County Sheriff's Office, 2003.

The Water Street Facility figure includes pre-trial sentenced men and women; Blaine Street Facility figure includes sentenced men and women; Rountree Lane Facility figure includes sentenced men in medium and minimum security.

Prisoners by Ethnicity, Water Street Jail Facility

Ethnicity	1994	1995	1996	1997	1998	1999	2000	2001	2002	% Change
Caucasian	3,464	3,613	3,638	3,665	3,765	3,698	4,839	4,630	4,877	5.3
Hispanic	2,692	2,946	3,009	2,590	2,903	2,615	3,021	2,831	2,918	3.1
African American	409	424	419	343	371	371	330	341	349	2.3
Asian	63	38	25	17	24	32	54	45	74	64.4
American Indian	36	38	44	36	45	39	34	38	41	7.9
Filipino	9	9	9	10	15	15	19	20	18	-10.0
Other	14	22	10	9	21	25	53	50	47	-6.0

Alcohol Related Bookings

Water Street Jail Facility	1995	1996	1997	1998	1999	2000	2001	2002	% Change
Alcohol Related Bookings	8,206	6,734	9,702	6,921	6,392	5,768	5,052	5,265	4.2
Total Bookings	15,203	15,777	16,583	16,865	15,665	12,540	11,834	12,472	5.4
Percent of Total Bookings	54.0	42.7	58.5	41.0	40.8	46.0	42.7	42.2	-1.2

Source: Santa Cruz County Sheriff's Office, 2003.

Juvenile Crime

This indicator measures the number of felony and misdemeanor arrests to persons under the age of 18.



Santa Cruz County

Misdemeanor	1994	1995	1996	1997	1998	1999	2000	2001	2002	% Change
Capitola Police Department	439	392	319	269	316	257	177	184	211	14.7
Santa Cruz Police Department	376	351	422	482	451	507	360	356	320	-10.1
Santa Cruz County Sheriff's Office	527	568	706	829	816	726	393	406	442	8.9
Scotts Valley Police Department	124	109	128	91	73	111	69	98	85	-13.3
Watsonville Police Department	272	293	285	277	316	300	407	316	291	-7.9
Total Juvenile Misdemeanor Arrests	1,836	1,791	1,953	2,010	2,036	1,980	1,471	1,454	1,411	-3.0
Juvenile Population (10-17)	23,789	24,509	25,063	25,815	26,416	27,038	27,991	29,275	30,500	4.2
Juvenile Misdemeanor Arrest Rate	77.2	73.1	77.9	77.9	77.1	73.2	52.6	49.7	46.3	-6.8

Felony	1994	1995	1996	1997	1998	1999	2000	2001	2002	% Change
Capitola Police Department	63	44	28	41	39	25	47	53	37	-30.2
Santa Cruz Police Department	154	184	145	131	122	117	124	98	91	-7.1
Santa Cruz County Sheriff's Office	233	234	293	356	325	347	160	155	191	23.2
Scotts Valley Police Department	42	43	40	36	16	29	21	37	41	10.8
Watsonville Police Department	133	151	141	168	165	133	103	166	162	-2.4
Total Juvenile Felony Arrests	656	700	674	764	691	661	465	521	530	1.7
Juvenile Population (10-17)	23,789	24,509	25,063	25,815	26,416	27,038	27,991	29,275	30,500	4.2
Juvenile Felony Arrest Rate	27.6	28.6	26.9	29.6	26.2	24.4	16.6	17.8	17.4	-2.2

Totals	1994	1995	1996	1997	1998	1999	2000	2001	2002	% Change
Juvenile Arrests (Misdemeanor and Felony)	2,492	2,491	2,627	2,774	2,727	2,641	1,936	1,975	1,941	-1.7
Juvenile Population (10-17)	23,789	24,509	25,063	25,815	26,416	27,038	27,991	29,275	30,500	4.2
Total Juvenile Crime Rate	104.8	101.6	104.8	107.5	103.2	97.7	69.2	67.5	63.6	-5.8

Source: State of California Department of Justice California Criminal Justice Profile, 2002; State of California, Department of Finance, Race/Ethnic Population with Age and Sex Detail, 1970-2040. Sacramento, CA, December 1998.

Note: The juvenile crime rate is calculated by dividing the number of misdemeanor and felony arrests by the juvenile population ages 10 – 17 and then multiplying by 1,000.

The total of all jurisdictions will not equal County total. The County total includes the California Highway Patrol, U.C. Santa Cruz, Santa Cruz Mountains Department of Parks and Recreation and the Union Pacific Railroad.

QUALITY OF LIFE INDICATOR 79

Juvenile Crime

Felony and Misdemeanor Crimes

Ethnicity	1994	1995	1996	1997	1998	1999	2000	2001	2002	% Change
Caucasian	1,403	1,273	1,365	1,524	1,581	1,619	1,107	1,004	984	-2.0
Hispanic	957	948	958	1,016	1,000	867	825	839	842	0.4
African American	98	109	120	92	92	106	70	71	54	-23.9
Other	34	39	64	49	54	49	41	61	61	0.0

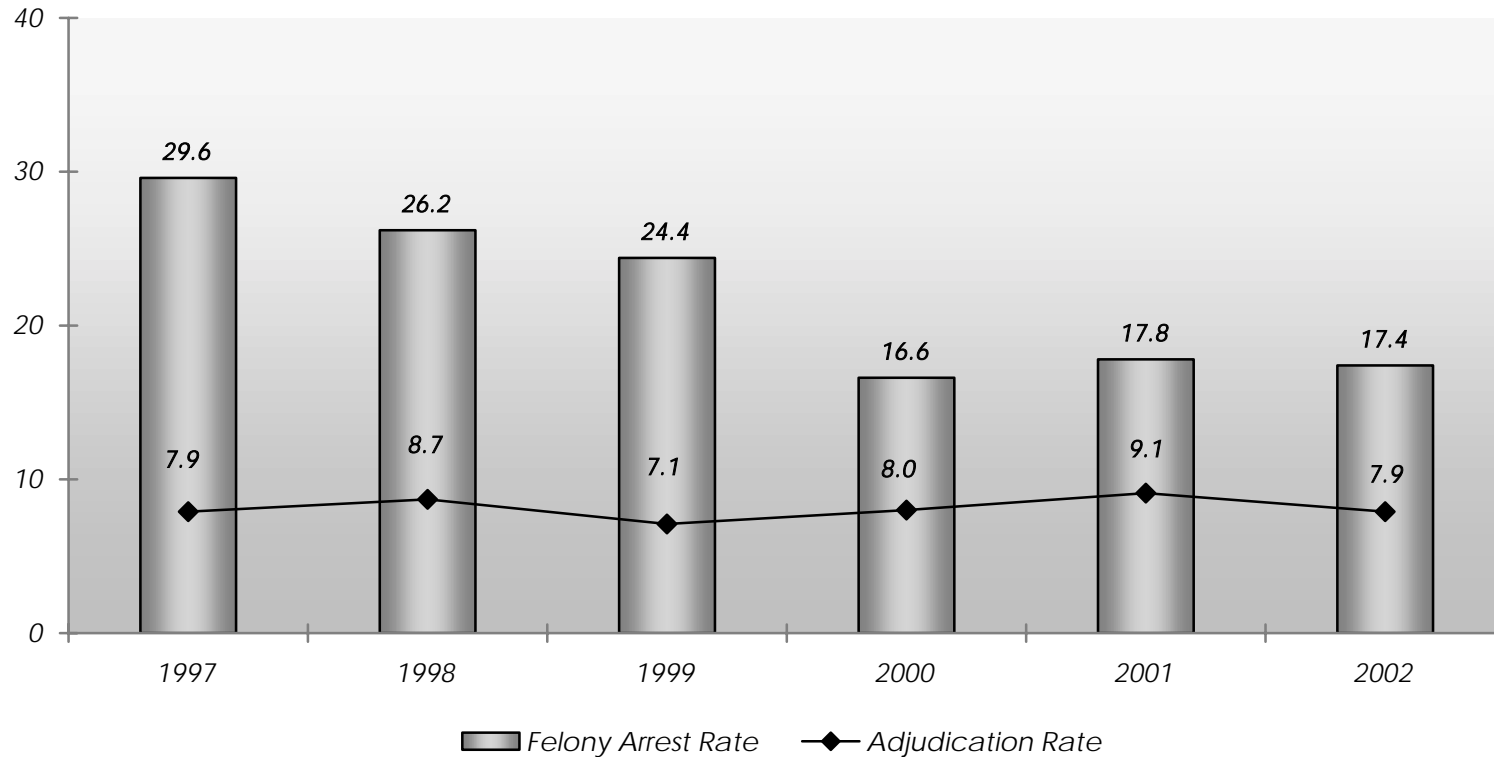
Felony and Misdemeanor Crimes

Age	1994	1995	1996	1997	1998	1999	2000	2001	2002	% Change
10 and under	30	18	22	42	20	26	4	3	7	133.3
11	34	22	48	34	33	12	16	10	15	50.0
12	141	106	114	81	93	44	52	79	57	-27.8
13	243	228	361	221	204	207	145	182	136	-25.3
14	405	379	306	404	379	369	314	268	280	4.5
15	493	529	517	540	534	515	409	389	403	3.6
16	858	605	619	638	697	655	546	508	479	-5.7
17	558	604	654	721	767	813	557	536	564	5.2

Source: State of California Department of Justice, California Criminal Justice Profile, 2002.

Juvenile Felony Arrests / Adjudications

Only a portion of youth who are arrested are referred to juvenile court for adjudication, which means formal handling by the court.



Source: Santa Cruz County Probation Department, 2003; State of California Department of Justice, California Criminal Justice Profile, 2002; State of California, Department of Finance, Race/Ethnic Population with Age and Sex Detail, 1970-2040. Sacramento, CA, December 1998.

The juvenile crime rate and adjudication rate is calculated by dividing the number of arrests or adjudications by the juvenile population ages 10 – 17 and then multiplying by 1,000.

QUALITY OF LIFE INDICATOR 81

Juvenile Hall Admissions

Number of Yearly Admissions, Santa Cruz County

Year	Annual Admissions	Juvenile Population 10-17	Juvenile Admissions Rate	Average Monthly Admissions
1990	1,405	22,318	63.0	117
1991	1,559	22,295	69.9	130
1992	1,488	22,762	65.4	124
1993	1,568	23,264	67.4	131
1994	1,539	23,789	64.7	128
1995	1,530	24,509	62.4	129
1996	1,751	25,063	69.9	146
1997	1,593	25,815	61.7	133
1998	1,576	26,416	59.7	131
1999	1,713	27,038	63.4	143
2000	1,583	27,991	56.6	132
2001	1,394	29,275	47.6	116
2002	1,068	30,500	35.0	89

Number of Admissions, by Gender

Year	Male		Female		Total
	Number	Percent	Number	Percent	
1990	1,129	80.4	276	19.6	1,405
1991	1,259	80.8	300	19.2	1,559
1992	1,218	81.9	270	18.1	1,488
1993	1,285	82.0	283	18.0	1,568
1994	1,269	82.5	270	17.5	1,539
1995	1,249	80.6	301	19.4	1,550
1996	1,395	79.7	356	20.3	1,751
1997	1,234	77.5	359	22.5	1,593
1998	1,251	79.4	325	20.6	1,576
1999	1,320	77.1	393	22.9	1,713
2000	1,213	76.6	370	23.3	1,583
2001	973	69.8	421	30.2	1,394
2002	853	79.9	215	20.1	1,068

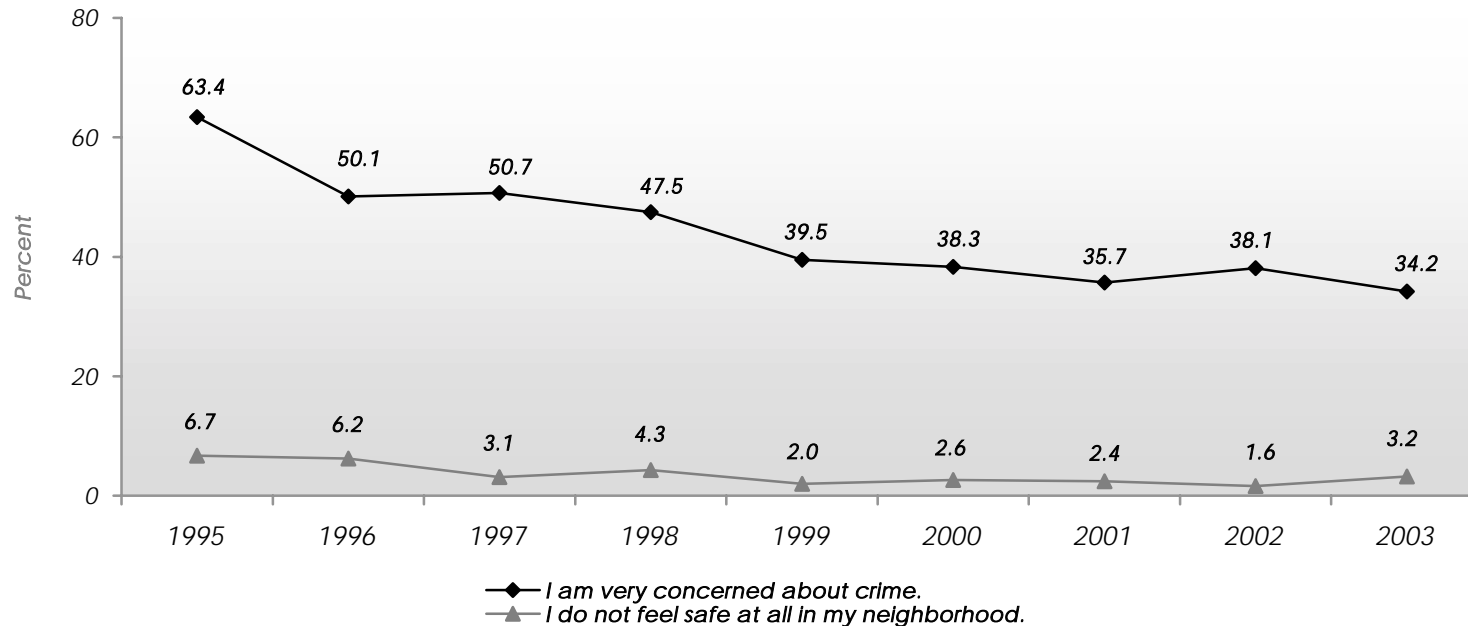
Source: State of California Youth Authority, *Statewide Juvenile Hall Reports, 2003*; State of California, Department of Finance, *Race/Ethnic Population with Age and Sex Detail, 1970-2040. Sacramento, CA, December 1998.*

Concern about Crime / Neighborhood Safety

Measuring people's perception of safety in their community has become a key indicator for measuring the success of community-oriented policing.

How concerned are you about crime in Santa Cruz County?

How safe would you say you feel in your neighborhood?



Total respondents	1995	1996	1997	1998	1999	2000	2001	2002	2003
How concerned are you about crime in Santa Cruz County?	347	489	507	512	559	658	699	683	701
How safe would you say you feel in your neighborhood?	344	498	509	513	560	657	706	684	702

Source: Santa Cruz Community Assessment Project, Telephone Survey.

See appendix for results of statistical testing for these questions.

QUALITY OF LIFE INDICATOR 82

 **Concern about Crime**
 **Community Profile**

Percent of respondents who are “very concerned” about crime in Santa Cruz County:

By Ethnicity	1998	1999	2000	2001	2002	*2003	2003 N
Caucasian	42.6	35.9	30.1	27.7	33.4	25.3	489
Latino	67.0	57.3	68.3	60.9	55.1	58.1	158

By Region	1998	1999	2000	2001	2002	*2003	2003 N
North County	44.2	33.2	33.8	27.6	33.9	31.1	235
South County	54.6	52.6	51.3	48.6	47.3	42.1	242
San Lorenzo Valley	40.4	32.2	30.1	24.3	26.4	23.5	222

By Age	1998	1999	2000	2001	2002	*2003	2003 N
18-24	-	22.0	26.1	37.7	41.7	28.0	109
25-44	-	40.7	42.4	24.5	35.9	36.9	229
45-64	-	43.8	36.5	34.5	37.8	32.9	251
65 and older	-	44.4	42.6	51.9	41.6	37.5	111

Source: Santa Cruz Community Assessment Project, Telephone Survey.

Significance Testing

Ethnicity: *Latinos* were significantly more likely to respond that they were “Very concerned” about crime than were *Caucasians*.

Region: Residents of the *South County* were significantly more likely to respond they were “Very concerned” about crime than were residents of the *San Lorenzo Valley*.

By Gender	1998	1999	2000	2001	2002	2003	2003 N
Male	-	35.8	31.0	32.1	32.9	31.9	348
Female	-	41.5	43.4	39.3	43.1	36.4	353

By Income	1999	2000	2001	2002	*2003	2003 N
\$34,999 per year or less	44.8	49.1	45.2	49.6	42.8	310
\$35,000 - \$65,499	36.0	35.9	33.0	33.3	25.8	162
\$65,500 and greater	36.2	26.2	21.8	25.9	22.8	176

* Indicates statistically significant survey responses when reporting differences between sub-groups for the 2003 data. Absence of this symbol indicates no statistical significance difference between sub-groups for the 2003 data.

Age: Those *65 and older* were significantly more likely to respond they were “Very concerned” about crime than were *18 – 24 year olds*.

Income: Those earning *\$34,999 or less* were significantly more likely to respond that they were “Very concerned” about crime than were those earning *\$65,500 or more*.

Neighborhood Safety

Community Profile

Percent of respondents who said they feel “very safe” in their neighborhood:

By Ethnicity	1998	1999	2000	2001	2002	*2003	2003 N
Caucasian	76.1	71.0	77.0	79.7	82.3	80.2	490
Latino	51.1	58.4	62.0	46.5	50.7	62.8	158

By Region	1998	1999	2000	2001	2002	*2003	2003 N
North County	68.3	70.9	73.0	73.7	74.6	77.3	236
South County	66.2	61.8	64.6	67.6	67.6	69.9	241
San Lorenzo Valley	81.9	75.0	82.3	83.7	83.5	88.6	225

By Age	1998	1999	2000	2001	2002	*2003	2003 N
18-24	-	74.4	73.9	58.3	61.9	75.3	109
25-44	-	66.4	65.1	72.3	67.2	67.3	229
45-64	-	69.1	75.0	74.5	76.2	83.7	252
65 and older	-	70.4	84.9	74.0	84.0	77.4	112

Source: Santa Cruz Community Assessment Project, Telephone Survey.

Significance Testing

Ethnicity: *Caucasians* were significantly more likely to respond that they felt “Very safe” in their neighborhood than were *Latinos*.

Region: Residents of the *San Lorenzo Valley* were significantly more likely to respond that they felt “Very safe” in their neighborhood than were residents of both the *North County* and *South County*.

By Gender	1998	1999	2000	2001	2002	2003	2003 N
Male	-	72.8	70.8	69.2	73.9	78.0	348
Female	-	66.0	72.9	74.8	72.1	74.1	355

By Income	1999	2000	2001	2002	*2003	2003 N
\$34,999 per year or less	68.5	62.7	63.0	59.6	70.4	311
\$35,000 - \$65,499	73.6	76.8	73.1	79.5	78.6	163
\$65,500 and greater	67.8	81.0	85.5	84.4	86.1	177

* Indicates statistically significant survey responses when reporting differences between sub-groups for the 2003 data. Absence of this symbol indicates no statistical significance difference between sub-groups for the 2003 data. For comparisons involving more than 2 groups (region, age and income), footnotes at the bottom of the page indicate which specific comparisons are significant.

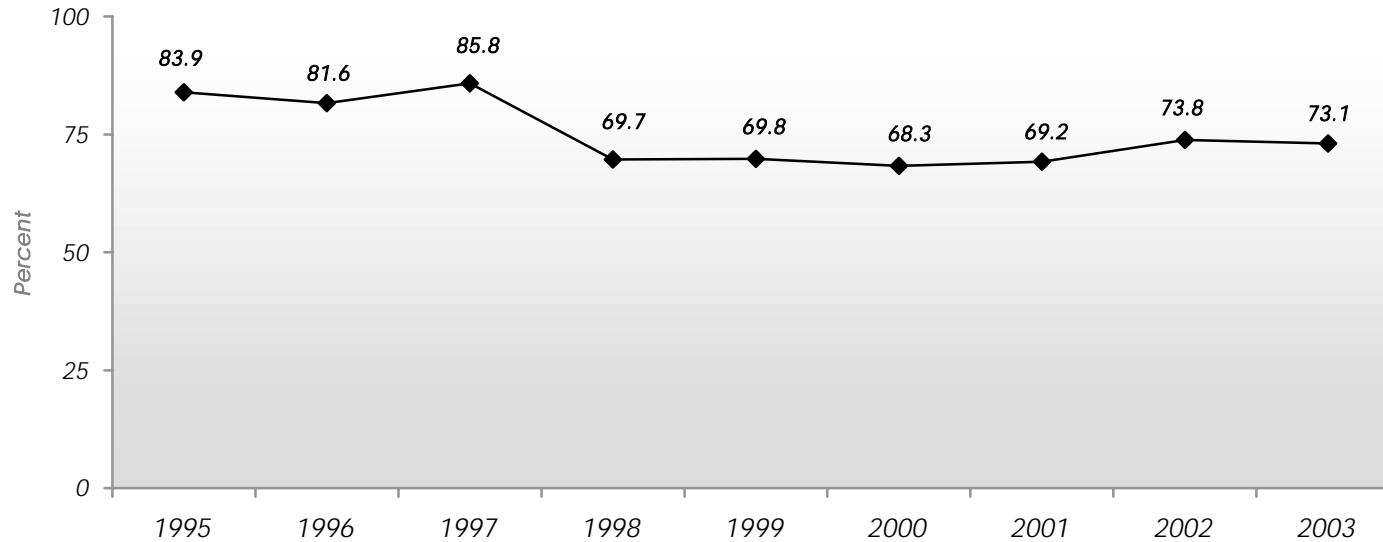
Age: *45-64 year olds* were significantly more likely to respond that they felt “Very safe” in their neighborhood than were *25-44 year olds*.

Income: Those earning *\$65,500 or more* were significantly more likely to respond that they felt “Very safe” in their neighborhood than were those earning *\$34,999 or less*.

QUALITY OF LIFE INDICATOR 82

 **Neighborhood Safety - Children**

Do you feel children have a safe place to play in your neighborhood?¹ (Respondents answering “yes”)



Response	1995	1996	1997	1998	1999	2000	2001	2002	2003
Yes (%)	83.9	81.6	85.8	69.7	69.8	68.3	69.2	73.8	73.1
No (%)	16.1	18.4	14.2	25.0	26.2	23.4	26.5	22.4	22.6
Respondents	1995	1996	1997	1998	1999	2000	2001	2002	2003
Overall	124	179	169	512	557	657	696	673	700

Source: Santa Cruz Community Assessment Project, Telephone Survey.

¹ Starting in 1998, this question was asked of the all respondents; in prior years only parents were asked. Therefore, the number of respondents increased in 1998-2003.

See appendix for results of statistical testing for this question.

Neighborhood Safety - Children

Community Profile

Percent of respondents who answered “yes” to: “Do you feel children have a safe place to play in your neighborhood?”

By Ethnicity	1998	1999	2000	2001	2002	2003	2003 N
Caucasian	71.1	68.5	67.8	73.8	77.8	74.2	488
Latino	65.2	75.0	66.9	59.8	62.4	67.6	158

By Region	1998	1999	2000	2001	2002	2003	2003 N
North County	67.7	72.7	69.9	70.4	74.6	75.1	236
South County	71.3	65.1	66.2	63.5	72.0	68.3	240
San Lorenzo Valley	71.3	65.0	67.3	80.0	75.6	78.5	223

By Age	1998	1999	2000	2001	2002	2003	2003 N
18-24	-	76.5	72.8	74.8	67.4	77.6	109
25-44	-	73.3	71.8	74.6	73.7	72.9	229
45-64	-	67.6	70.8	72.0	79.0	75.4	252
65 and older	-	58.0	50.0	54.1	66.5	63.6	110

Source: Santa Cruz Community Assessment Project, Telephone Survey.

By Gender	1998	1999	2000	2001	2002	*2003	2003 N
Male	-	75.8	70.0	72.8	78.1	77.6	346
Female	-	67.2	67.3	65.5	69.7	68.6	354

By Income	1999	2000	2001	2002	*2003	2003 N
\$34,999 per year or less	66.7	63.8	63.6	68.5	68.2	310
\$35,000 - \$65,499	74.0	71.8	70.9	79.5	73.8	162
\$65,500 and greater	71.5	72.0	77.3	79.0	83.1	176

* Indicates statistically significant survey responses when reporting differences between sub-groups for the 2003 data. Absence of this symbol indicates no statistical significance difference between sub-groups for the 2003 data. For comparisons involving more than 2 groups (region, age and income), footnotes at the bottom of the page indicate which specific comparisons are significant.

Significance Testing

Gender: Males were significantly more likely to respond “Yes” than were females.

Income: Those earning \$65,500 or more were significantly more likely to respond “Yes” than were those earning \$34,999 or less.

QUALITY OF LIFE INDICATOR 83

Police Officers Per Capita

The ratio of full time officers to population is an important indicator of access to public safety resources.

Santa Cruz County

Agency	Number of Sworn Officers							
	1995	1996	1997	1998	1999	2000	2001	2002
Capitola Police Department	22	22	22	23	23	23	20	19
Santa Cruz Police Department	84	91	93	94	95	96	99	99
Santa Cruz County Sheriff (Unincorporated areas)	136	141	146	150	135	137	137	135
Scotts Valley Police Department	21	21	21	21	22	22	21	22
Watsonville Police Department	48	54	57	57	62	62	60	61

Agency	Officers Per Capita							
	1995	1996	1997	1998	1999	2000	2001	2002
Capitola Police Department	1 per 486	1 per 491	1 per 493	1 per 480	1 per 485	1 per 487	1 per 505	1 per 532
Santa Cruz Police Department	1 per 620	1 per 579	1 per 571	1 per 583	1 per 586	1 per 583	1 per 551	1 per 553
Santa Cruz County Sheriff (Unincorporated areas)	1 per 986	1 per 960	1 per 923	1 per 912	1 per 1,020	1 per 1,013	1 per 980	1 per 996
Scotts Valley Police Department	1 per 458	1 per 468	1 per 479	1 per 502	1 per 486	1 per 493	1 per 545	1 per 523
Watsonville Police Department	1 per 696	1 per 634	1 per 642	1 per 651	1 per 605	1 per 615	1 per 785	1 per 780

Source: All Santa Cruz County Law Enforcement Jurisdictions, 2003; State of California, Department of Finance, E-4 Population Estimates for Cities, Counties and the State, 2001-2003, with 2000 DRU Benchmark. Sacramento, California, May 2003.

The officer per capita figure is calculated by dividing the total population in a given jurisdiction by the number of sworn officers in that jurisdiction. Officer count is typically performed during the month of October.

Police Response

Response times are important, especially for medical emergency, fire and crimes in progress. These statistics are for overall response times that include all calls for service, both emergency and non-emergency.

Average Response Time

Agency	Priority 1						Priority 2						Priority 3					
	1997	1998	1999	2000	2001	2002	1997	1998	1999	2000	2001	2002	1997	1998	1999	2000	2001	2002
Capitola Police Department	4:07	3:45	4:05	4:13	4:05	4:11	7:08	6:38	6:26	6:25	6:44	8:11	12:03	12:18	12:52	14:10	14:18	18:20
Santa Cruz Police Department	4:49	3:59	4:33	4:54	4:52	4:19	8:54	7:24	6:58	7:30	7:56	7:48	14:15	11:54	12:29	13:29	16:01	17:15
Santa Cruz County Sheriff's Office	12:01	8:41	8:44	8:55	9:25	8:57	18:34	16:58	14:55	15:22	15:48	16:20	25:40	25:12	24:21	23:24	25:43	25:43
Scotts Valley Police Department	3:00	2:50	2:50	3:00	3:00	2:42	7:00	-	-	-	-	4:12	-	-	-	-	-	19:42
Watsonville Police Department	5:01	3:57	4:11	4:22	4:21	3:60	10:52	8:57	7:42	7:01	8:01	7:28	18:21	17:56	17:35	18:33	19:25	19:51

Source: Santa Cruz Consolidated Emergency Communications Center and Scotts Valley Police Department, 2003.

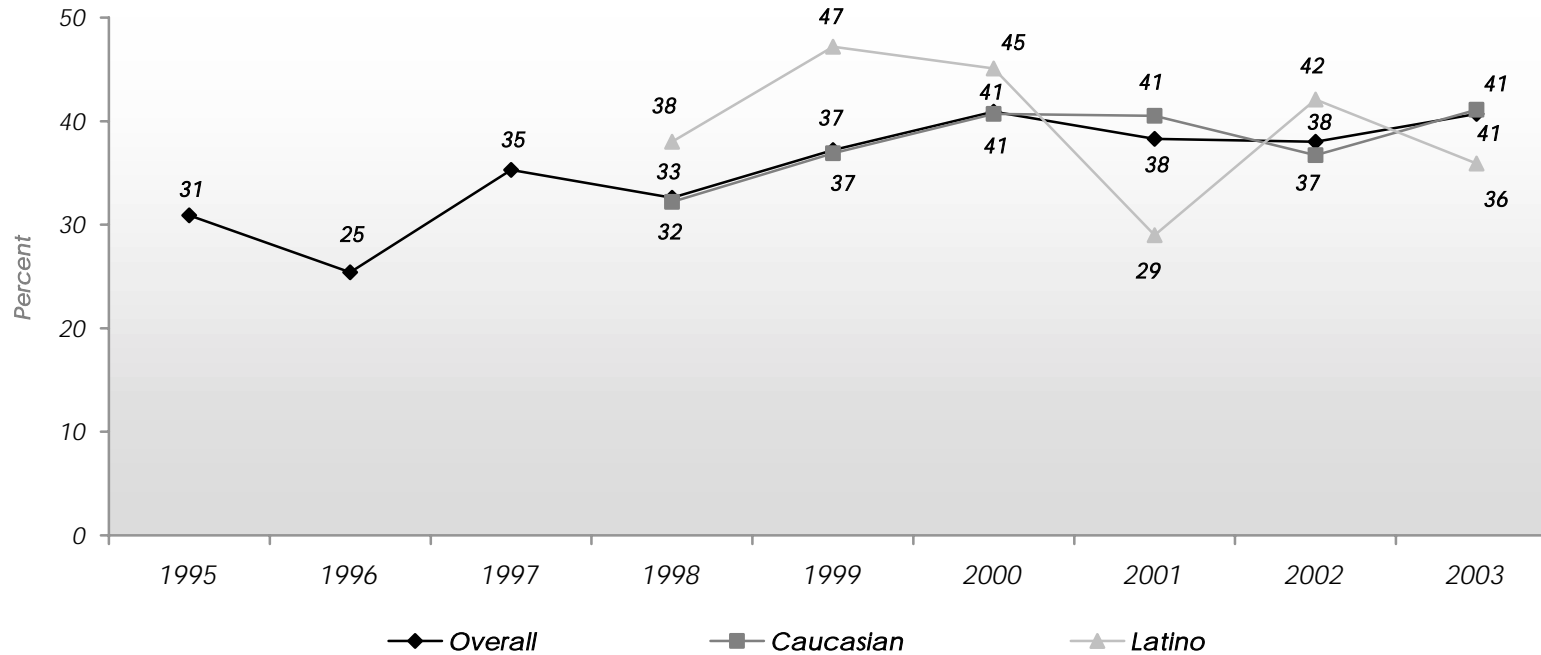
Response times were calculated by Santa Cruz Consolidated Emergency Communications Center. All Jurisdictions (except Scotts Valley Police Department) use this agency as their dispatching system. **Priority 1** is defined as a call for assistance that involves a person or an accident. **Priority 2** involves property crimes and **Priority 3** calls are informational.

Note: Prior to 2002, average Priority 1 response times by jurisdiction included anomalies, which may have artificially inflated the averages presented. Beginning in 2002, all anomalies within Priority 1 response times have been examined for accuracy. Incomplete or erroneous data have been removed from the dataset and are not reflected in the 2002 data.

QUALITY OF LIFE INDICATOR 85

☎ Law Enforcement Effectiveness

How effective do you think law enforcement is in our community? (Respondents answering “very”)



Total respondents	1995	1996	1997	1998	1999	2000	2001	2002	2003
Overall	324	493	507	513	557	658	701	681	699
Caucasian	-	-	-	385	425	445	488	474	487
Latino	-	-	-	92	89	142	159	154	158

Source: Santa Cruz Community Assessment Project, Telephone Survey.

See appendix for results of statistical testing for this question.

Law Enforcement Effectiveness

Community Profile

Percent of respondents who think law enforcement is “very effective” in their community:

By Ethnicity	1998	1999	2000	2001	2002	2003	2003 N
Caucasian	32.2	36.9	40.7	40.5	36.7	41.1	487
Latino	38.0	47.2	45.1	29.0	42.1	35.9	158

By Region	1998	1999	2000	2001	2002	2003	2003 N
North County	32.9	39.5	38.7	42.1	38.1	37.8	236
South County	33.5	38.2	43.1	35.0	39.9	46.7	240
San Lorenzo Valley	29.8	22.0	43.4	34.8	33.0	34.9	221

By Age	1998	1999	2000	2001	2002	2003	2003 N
18-24	-	40.7	32.6	29.5	28.1	41.6	109
25-44	-	38.7	43.5	37.0	35.9	33.2	229
45-64	-	36.2	36.5	38.2	40.9	44.1	249
65 and older	-	32.5	50.0	45.1	40.3	47.6	112

Source: Santa Cruz Community Assessment Project, Telephone Survey.

By Gender	1998	1999	2000	2001	2002	2003	2003 N
Male	-	37.3	38.0	36.5	37.2	39.6	344
Female	-	37.2	42.9	40.2	38.8	41.7	355

By Income	1999	2000	2001	2002	2003	2003 N
\$34,999 per year or less	38.5	34.7	38.3	38.8	38.2	311
\$35,000 - \$65,499	32.6	45.3	37.0	34.7	47.0	161
\$65,500 and greater	40.4	45.8	42.6	41.4	40.8	175

* Indicates statistically significant survey responses when reporting differences between sub-groups for the 2003 data. Absence of this symbol indicates no statistical significance difference between sub-groups for the 2003 data.

QUALITY OF LIFE INDICATOR 86

Fire Response

Fire Totals by Agency and Type

Fire District	Fire Related		Medical Related	
	2001	2002	2001	2002
Aptos/La Selva	852	867	855	923
Ben Lomond	153	135	176	197
Boulder Creek	270	278	431	357
Branciforte	38	27	93	111
Central	2,435	2,344	1,518	1,538
Felton	232	217	270	282
Santa Cruz	3,085	3,121	1,868	1,798
Scotts Valley	700	712	680	651
Watsonville	2,018	1,976	1,405	1,420
Zayante	89	91	134	140
Total	9,872	9,768	7,430	7,417

Source: Santa Cruz Consolidated Emergency Communications Center, 2003.

Code 3 Average Fire Response Time by District

Fire District	2001	2002
Aptos/La Selva	5:29	4:48
Ben Lomond	7:54	5:26
Boulder Creek	7:16	5:58
Branciforte	6:27	7:06
Central	4:47	4:25
Felton	5:51	5:45
Santa Cruz	4:28	4:31
Scotts Valley	5:42	5:05
Watsonville	4:06	4:05
Zayante	8:17	7:13
Ambulance Code 3 Response for Urban Areas	4:59	5:07
Ambulance Code 3 Response for Rural Areas	8:53	8:40

Code 3 is red lights and siren emergency, while Code 2 observes all traffic signals.

Family Violence - Households Reporting Domestic Violence

This indicator measures the number of calls placed to local law enforcement for assistance in domestic violence disputes.



Number of Calls, Santa Cruz County

Agency	1994	1995	1996	1997	1998	1999	2000	2001	2002	% Change
Capitola Police Department	42	42	55	44	36	30	27	25	26	4.0
Santa Cruz Police Department	198	207	269	167	193	190	160	204	191	-6.4
Santa Cruz County Sheriff's Office ¹	262	244	217	247	206	541	918	948	456 ³	N/a
Scotts Valley Police Department	29	44	34	13	19	35	40	47	43	-8.5
Watsonville Police Department	180	183	238	268	274	244	204	246	242	-1.6
County Total²	729	735	834	760	758	1,058	1,374	1,487	968³	N/a
Population	237,800	240,000	242,500	245,400	249,000	252,100	255,000	257,500	258,400	0.3
Domestic Violence Call Rate	3.1	3.1	3.4	3.1	3.0	4.2	5.4	5.8	3.7³	N/a

Number of Calls, California

	1994	1995	1996	1997	1998	1999	2000	2001	2002	% Change
Number of Calls	250,439	246,315	227,899	220,156	196,832	186,406	196,880	198,031	196,569	-0.7
Population (in thousands)	31,661	31,910	32,223	32,670	33,226	33,766	34,336	34,385	35,000	1.8
Rate of Domestic Violence Calls	7.9	7.7	7.1	6.7	5.9	5.5	5.7	5.8	5.6	-3.4

Source: State of California Department of Justice, California Criminal Justice Profile, 2003; State of California, Department of Finance, E-4 Population Estimates for Cities, Counties and the State, 2001-2003, with 2000 DRU Benchmark. Sacramento, California, May 2003.

¹ In 1999, the Sheriff's Department changed the method of categorizing domestic violence cases to comply with California Penal Code definitions. Cases that would have been classified as assault before 1999 are now being appropriately classified as domestic violence cases.

² The total of all jurisdictions will not equal County total. The County total includes the California Highway Patrol, U.C. Santa Cruz, Santa Cruz Mountains Department of Parks and Recreation and the Union Pacific Railroad.

³ In 2002, the Sheriff's Department discovered an error in the reporting system that tracks domestic violence calls for assistance. Therefore, the sharp decline between the 2001 and 2002 data does not reflect a decrease in calls for assistance. Instead, it reflects a correction in the reporting system.

QUALITY OF LIFE INDICATOR 87

Family Violence - Households Reporting Domestic Violence

Number of Cases with Weapons, Santa Cruz County

Agency	1994	1995	1996	1997	1998	1999	2000	2001	2002	% Change
Capitola Police Department	37	26	43	31	26	22	24	21	15	-28.6
Santa Cruz Police Department	184	189	251	156	177	178	149	187	176	-5.9
Santa Cruz County Sheriff's Office ¹	262	244	217	247	206	411	814	864	116 ³	N/a
Scotts Valley Police Department	23	40	19	11	17	25	28	32	11	-65.6
Watsonville Police Department	158	137	159	175	180	108	187	228	133	-41.7
County Total²	678	647	699	629	621	755	1,213	1,343	457³	N/a
Population	237,800	240,000	242,500	245,400	249,000	252,100	255,000	257,500	258,400	0.3
Domestic Violence Cases with Weapons Rate	2.9	2.7	2.9	2.6	2.5	3.0	4.8	5.2	1.8³	N/a

Number of Cases with Weapons, California

	1994	1995	1996	1997	1998	1999	2000	2001	2002	% Change
Cases with Weapons	182,240	174,299	159,075	155,650	136,658	127,795	135,156	136,366	119,859	-12.1
Population (in thousands)	31,661	31,910	32,223	32,670	33,226	33,766	34,336	34,385	35,000	1.8
Rate of Domestic Violence Cases with Weapons	5.8	5.5	4.9	4.8	4.1	3.8	3.9	4.0	3.4	-15.0

Source: State of California Department of Justice, California Criminal Justice Profile, 2003; State of California, Department of Finance, E-4 Population Estimates for Cities, Counties and the State, 2001-2003, with 2000 DRU Benchmark. Sacramento, California, May 2003.

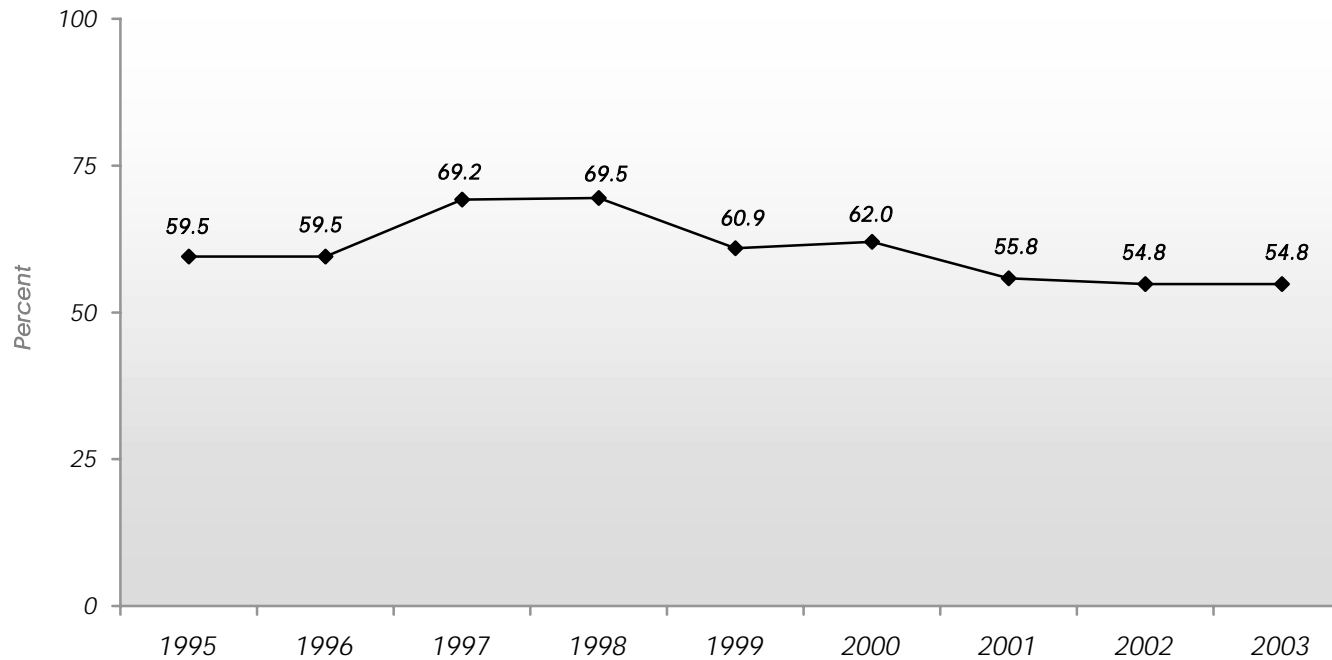
¹ In 1999, the Sheriff's Department changed the method of categorizing domestic violence cases to comply with California Penal Code definitions. Cases that would have been classified as assault before 1999 are now being appropriately classified as domestic violence cases.

² The total of all jurisdictions will not equal County total. The County total includes the California Highway Patrol, U.C. Santa Cruz, Santa Cruz Mountains Department of Parks and Recreation and the Union Pacific Railroad.

³ In 2002, the Sheriff's Department discovered an error in the reporting system that tracks domestic violence calls for assistance. Therefore, the sharp decline between the 2001 and 2002 data does not reflect a decrease in calls for assistance. Instead, it reflects a correction in the reporting system.

Family Violence

*How concerned are you about family violence (includes domestic violence, child abuse, and senior abuse)?
(Respondents answering “very concerned”)*



Total respondents	1995	1996	1997	1998	1999	2000	2001	2002	2003
Overall	343	479	490	508	558	658	698	679	699

Source: Santa Cruz County Community Assessment Project, Telephone Survey.

See appendix for results of statistical testing for this question.

QUALITY OF LIFE INDICATOR 87

 Family Violence

 Community Profile

Percent of respondents who are “very concerned” with family violence:

By Ethnicity	1998	1999	2000	2001	2002	2003	2003 N
Caucasian	69.1	61.2	61.1	50.2	53.0	50.3	487
Latino	72.2	68.5	67.6	68.8	62.0	64.4	158

By Gender	1998	1999	2000	2001	2002	2003	2003 N
Male	-	54.2	50.2	50.6	48.4	51.1	345
Female	-	64.4	70.4	60.9	61.2	58.4	355

By Region	1998	1999	2000	2001	2002	*2003	2003 N
North County	72.2	63.1	61.0	52.2	54.3	54.9	235
South County	72.7	63.0	63.6	61.9	56.7	59.0	240
San Lorenzo Valley	56.0	52.5	63.7	50.0	50.8	43.2	225

By Income	1999	2000	2001	2002	*2003	2003 N
\$34,999 per year or less	74.6	66.4	66.2	58.5	62.7	308
\$35,000 - \$65,499	56.7	56.9	55.5	59.1	52.8	162
\$65,500 and greater	52.0	64.3	43.9	46.8	44.8	177

By Age	1998	1999	2000	2001	2002	2003	2003 N
18-24	-	59.8	56.5	70.5	67.0	55.2	109
25-44	-	62.0	63.7	48.7	59.3	53.4	229
45-64	-	64.6	64.1	57.5	50.1	58.1	249
65 and older	-	52.5	58.5	56.4	50.4	50.3	112

Source: Santa Cruz Community Assessment Project, Telephone Survey.

* Indicates statistically significant survey responses when reporting differences between sub-groups for the 2003 data. Absence of this symbol indicates no statistical significance difference between sub-groups for the 2003 data. For comparisons involving more than 2 groups (region, age and income), footnotes at the bottom of the page indicate which specific comparisons are significant.

Significance Testing

Region: Residents of the *South County* were significantly more likely to respond that they were “Very Concerned” about family violence than were residents of the *San Lorenzo Valley*.

Income: Those earning *\$34,999 or less* were significantly more likely to respond “Very Concerned” than were those earning *\$65,500 or more*.

Child Witnesses to Domestic Violence

Exposure to domestic violence is linked to increased aggressiveness, emotional problems such as depression and anxiety, lower levels of social competence and poorer academic performance in children.¹ For these reasons, many therapists view exposure to domestic violence as a form of child abuse.

Prevalence of Child Witnesses of Domestic Violence Per 1,000 Children

	1994	1995	1996	1997	1998	1999	2000	2001	2002
Domestic Violence Calls for Assistance	729	735	834	760	758	1,058	1,374	1,487	968 ²
Estimated calls with child witnesses	277	279	317	289	288	402	522	565	368
Estimated number of child witnesses	554	559	634	578	576	804	1,044	1,130	736
Population 0-17	60,202	61,152	61,965	62,984	63,948	64,855	65,771	66,511	67,250
Rate per 1,000 children 0-17	9.2	9.1	10.2	9.2	9.0	12.4	15.9	17.0	10.9

Source: Family Violence Response Team; Community Response Team, Applied Survey Research, 2000; State of California Department of Justice, Criminal Justice Profile, 2002; State of California, Department of Finance, Race/Ethnic Population with Age and Sex Detail, 1970-2040. Sacramento, CA, December 1998.

Note: The Family Violence Response Team (FVRT) in South County and the Community Response Team (CRT) in North County both record whether or not children are present in the home when law enforcement officials respond to domestic violence calls. Because FVRT and CRT data are not available for every year or every month over the last five years, it was necessary to use extrapolation methods to determine a general multiplier for estimating presence of children witnessing domestic violence. For instance, FVRT cases with children in 1998 (110) were presented as a percent of the total cases of calls for assistance (274 or 40%) in the same geographical area. Next, a similar process was used with CRT data to determine the percent of cases in which children were present in the home in the jurisdictions of the Santa Cruz County Sheriff's Office (37%) and the police departments of Capitola (32%), Santa Cruz (34%), and Scotts Valley (48%). On an average across the five jurisdictions, 38.2% of domestic violence calls for assistance had children in the home. Next, a conservative assumption was made that there were an average of two children per household throughout the County. The 2001 Number of cases estimated to have children in the home (using the multiplier of 38.2%) was then multiplied by two to produce an estimate of the number of children witnessing domestic violence.

¹ *The David and Lucile Packard Foundation, The Future of Children— "Domestic Violence and Children," Volume 9, Number 3, Winter 1999.*

² *In 2002, the Sheriff's Department discovered an error in the reporting system that tracks domestic violence calls for assistance. Therefore, the sharp decline between the 2001 and 2002 data does not reflect a decrease in calls for assistance. Instead, it reflects a correction in the reporting system.*

QUALITY OF LIFE INDICATOR 89

Child Abuse

Definition of Relevant Terms:

Child: Individual 17 years or less.

Sexual Abuse: The victimization of a child through sexual activities. These activities include, but are not limited to: molestation, indecent exposure, fondling, rape, and incest.

Physical Abuse: A bodily injury which has been or is being inflicted by other than accidental means on a child by the child's caretaker. Physical abuse includes, but is not limited to: willful cruelty, unjustifiable punishment, or corporal punishment / injury to a child.

Severe Neglect: The negligent failure of a caretaker to protect a child from severe malnutrition, or medically diagnosed non-organic failure to thrive. Severe neglect also includes situations where a caretaker willingly causes or allows the child to be placed in a situation where his / her health is endangered. This includes, but is not limited to: intentional failure to provide necessary medical care, adequate food, clothing, or shelter.

General Neglect: The negligent failure of a caretaker to provide adequate food, clothing, shelter, or supervision where no physical injury to the child has occurred.

Emotional Abuse: Non-physical mistreatment, the results of which may be characterized by disturbed behavior on the part of the child such as severe withdrawal, regression, bizarre behavior, hyperactivity, or dangerous behavior. Such behavior, in and of itself, is not deemed to be evidence of emotional abuse. Emotional abuse includes, but is not limited to: willfully causing or permitting any child to suffer, inflicting mental suffering, or endangering a child's emotional well being.

Exploitation: The act of forcing or coercing a child into performing activities for the benefit of the caretaker which are beyond the child's capabilities or which are illegal or degrading. This term also includes sexual exploitation.

Caretaker Absence or Incapacity: The absence of the caretaker due to hospitalization, incarceration or death; incapacity of the caretaker to provide adequate care for the child due to physical or emotional illness, disabling condition, or compulsive use of alcohol or narcotics.

Source: Health and Welfare Agency Annual Statistical Report, 2002.

Child Abuse

Substantiated Cases of Child Abuse by Type of Abuse, Santa Cruz County

Type of Abuse	1998	1999	2000	2001	2002	% Change
Sexual Abuse	52	43	48	46	52	13.0
Physical Abuse	108	132	112	107	94	-12.1
Severe Neglect	65	28	35	9	14	55.6
General Neglect	236	267	233	244	199	-18.4
Exploitation	-	0	-	-	0	N/a
Emotional Abuse	260	313	318	320	368	15.0
Caretaker Absence or Incapacity	91	95	71	56	56	0.0
At Risk – Sibling Abused	29	26	48	27	18	-33.3
Substantial Risk	0	0	5	17	-	N/a
County Total	842	904	872	828	804	-2.9

Note: Types of abuse with less than 5 substantiated cases have been masked to protect confidentiality.

Rate of Substantiated Cases of Child Abuse

	1998	1999	2000	2001	2002	% Change
Rate of Substantiated Cases of Child Abuse – Santa Cruz County	13.2	14.0	14.4	13.4	12.9	-3.7
Rate of Substantiated Cases of Child Abuse – California	11.7	12.0	12.3	12.3	12.1	-1.6

Source: Needell, B. et al, (2003). Child Welfare Services Reports for California. Retrieved May 14, and June 20, 2003, from University of California at Berkeley Center for Social Services Research website. URL: <<http://cssr.berkeley.edu/CWSCMSreports/>> Child Welfare Services Reports for California. Retrieved from University of California at Berkeley Center for Social Services Research.

QUALITY OF LIFE INDICATOR 90

Elder Abuse

Reported cases of Abuse

Reported Cases	1994	1995	1996	1997	1998	1999	2000	2001	2002	% Change
Cases of elders abused by another	136	164	157	170	200	211	167	170	183	7.6
Cases of elder self-neglect	60	96	94	67	76	121	124	163	132	-19.0
County Total	196	260	251	237	276	332	291	333	315	-5.4
Population 65 or older	26,551	26,785	27,081	27,281	27,529	27,762	28,109	28,423	28,720	1.0
Elder abuse reported case rate per 1,000	7.4	9.7	9.3	8.7	10.0	12.0	10.4	11.7	11.0	-6.0

Source: Santa Cruz County Human Resources Agency, Adult and Long Term Care Division, Health and Welfare Agency Annual Statistical Report, 2003; State of California, Department of Finance, Race/Ethnic Population with Age and Sex Detail, 1970-2040. Sacramento, CA, December 1998.

Note: Figures prior to September 1999 include the number of cases investigated in that particular year, in addition to the number of cases reported and not investigated after an evaluation by a supervisor. In September 1999, the state report form and methodology changed. This new system only tracks reports investigated which are either confirmed or inconclusive. Therefore, the decreased elder abuse report rate above is not necessarily reflective of a decrease in elder abuse. In fact, if a change in reporting had not occurred, the rate would have increased.

Foster Care Placements

Children that are reported to be in at-risk environments often are placed in foster care. When possible, children are kept in the home but placed under supervision. Children experiencing serious cases of abuse and neglect are placed in out-of-home foster care, until the family can be reunified or other actions are taken.

Rate of First Entries into Foster Care

	1996	1997	1998	1999	2000	2001	2002	% Change
Number of Children Placed in Foster Care	262	212	211	177	226	186	149	-19.9
Rate per 1,000 — Santa Cruz County	4.2	3.4	3.3	2.7	3.7	3.0	2.4	-20.0
Rate per 1,000 — California	3.8	4.0	3.8	3.5	3.5	3.5	3.4	-2.9

Source: Needell, B. et al, (2003). Child Welfare Services Reports for California. Retrieved May 14, and June 20, 2003, from University of California at Berkeley Center for Social Services Research website. URL: <<http://cssr.berkeley.edu/CWSCMSreports/>> Child Welfare Services Reports for California. Retrieved from University of California at Berkeley Center for Social Services Research.

QUALITY OF LIFE INDICATOR 92

Driving Under the Influence – Felony

Driving under the influence arrest data is a gauge of law enforcement's effectiveness in stopping DUI crimes and preventing possible injury or fatalities.

Adult and Juvenile Felony DUI Arrests, Santa Cruz County

Ethnicity	1994	1995	1996	1997	1998	1999	2000	2001	2002	% Change
Caucasian	26	19	21	26	22	38	35	23	30	30.4
Hispanic	17	13	19	17	12	13	15	24	14	-41.7
African American	0	0	0	1	0	1	1	0	0	N/a
Other	0	0	0	1	0	1	1	0	2	N/a
County Total	43	32	40	45	34	53	52	47	46	-2.1
Population 16 and older	184,105	185,903	187,513	190,451	193,833	197,508	201,232	205,002	208,607	1.8
Felony DUI Rate per 10,000	2.3	1.7	2.1	2.4	1.8	2.7	2.6	2.3	2.2	-4.3

Adult Felony DUI Arrests, California

Ethnicity	1994	1995	1996	1997	1998	1999	2000	2001	2002	% Change
Caucasian	3,061	2,832	2,636	2,256	2,222	2,196	2,243	2,365	2,338	-1.1
Hispanic	3,470	2,917	2,834	2,436	2,259	2,127	2,343	2,492	2,612	4.8
African American	589	462	438	407	390	445	450	426	522	22.5
Other	357	342	348	408	420	420	398	337	360	6.8
County Total	7,477	6,553	6,256	5,507	5,291	5,188	5,434	5,620	5,832	3.8
Population 18 and older	23,027,636	23,158,473	23,340,409	23,701,148	24,075,776	24,480,601	24,882,708	25,300,422	25,706,335	1.6
Felony DUI Rate per 10,000	3.2	2.8	2.7	2.3	2.2	2.1	2.2	2.2	2.3	4.5

Source: State of California Department of Justice, California Criminal Justice Profile, 2002; State of California, Department of Finance, Race/Ethnic Population with Age and Sex Detail, 1970-2040, Sacramento, CA, December 1998.

In 1994, there were no juvenile felony DUI arrests in Santa Cruz County. In 1995, there were two Caucasian juvenile felony arrests. In 1996, there was one Hispanic juvenile DUI arrest, while in 1997 there were two Caucasian juvenile felony DUI arrests. There were no juvenile felony DUI arrests in 1998 or 1999. In 2000, there was one juvenile felony arrest with the ethnicity identified as "other." In 2001, there were two felony DUI arrests of Hispanic youth. In 2002, there were no juvenile felony DUI arrests in Santa Cruz County.

Driving Under the Influence – Misdemeanor

Adult Misdemeanor DUI Arrests, Santa Cruz County

Ethnicity	1994	1995	1996	1997	1998	1999	2000	2001	2002	% Change
Caucasian	1,413	1,309	1,553	1,463	1,379	1,390	1,142	1,015	1,125	10.8
Hispanic	1,067	995	929	856	648	530	565	563	576	2.3
African American	32	33	28	42	24	31	36	41	49	19.5
Other	57	40	31	50	39	28	53	50	47	-6.0
County Total	2,569	2,377	2,541	2,411	2,090	1,979	1,796	1,669	1,797	7.7
Adult Population (18+)	178,617	180,358	181,692	184,268	187,527	190,970	194,477	198,014	201,487	1.8
Adult Misdemeanor DUI Rate per 10,000	143.8	131.8	139.9	130.8	111.5	103.6	92.4	84.3	89.2	5.8

Adult Misdemeanor DUI Arrests, California

Ethnicity	1994	1995	1996	1997	1998	1999	2000	2001	2002	% Change
Caucasian	82,975	82,212	82,969	77,566	77,553	78,354	74,179	72,852	72,319	-0.7
Hispanic	92,562	87,639	88,722	82,075	79,440	77,639	78,900	75,813	76,613	1.1
African American	13,702	12,293	12,887	12,451	12,275	12,588	11,930	12,137	12,494	2.9
Other	10,346	10,398	11,138	13,938	13,768	14,762	11,965	10,877	10,840	-0.3
State Total	199,585	192,542	195,716	186,028	183,036	183,343	176,974	171,679	172,266	0.3
Adult Population (18+)	23,027,636	23,158,473	23,340,409	23,701,148	24,075,776	24,480,601	24,882,708	25,300,422	25,706,335	1.6
Adult Misdemeanor DUI Rate per 10,000	86.7	83.1	83.9	78.5	76.0	74.9	71.1	67.9	67.0	-1.3

Source: State of California Department of Justice, California Criminal Justice Profile, 2002; State of California, Department of Finance, Race/Ethnic Population with Age and Sex Detail, 1970-2040, Sacramento, CA, December 1998.

QUALITY OF LIFE INDICATOR 92

Driving Under the Influence – Misdemeanor

Juvenile Misdemeanor DUI Arrests, Santa Cruz County

Ethnicity	1994	1995	1996	1997	1998	1999	2000	2001	2002	% Change
Caucasian	18	19	16	21	23	35	16	21	12	-42.9
Hispanic	15	13	9	13	14	6	11	10	6	-40.0
Other	1	2	1	0	3	1	1	0	0	N/a
African American	0	1	1	0	2	1	0	0	0	N/a
County Total	34	35	27	34	42	43	28	31	18	-41.9
Juvenile Population 16-17	5,488	5,545	5,821	6,183	6,306	6,538	6,755	6,988	7,120	1.9
Juvenile Misdemeanor DUI Rate per 10,000	62.0	63.1	46.4	55.0	66.6	65.8	41.5	44.4	25.3	-43.0

Juvenile Misdemeanor DUI Arrests, California

Ethnicity	1994	1995	1996	1997	1998	1999	2000	2001	2002	% Change
Caucasian	750	832	960	818	875	892	778	850	775	-8.8
Hispanic	793	619	629	639	615	621	556	589	572	-2.9
Other	65	53	69	101	136	121	81	80	86	7.5
African American	82	66	56	51	57	40	42	41	49	19.5
State Total	1,690	1,570	1,714	1,609	1,683	1,674	1,457	1,560	1,482	-5.0
Juvenile Population 16-17	789,082	801,976	839,198	894,117	899,563	912,654	942,224	958,094	991,332	3.5
Juvenile Misdemeanor DUI Rate per 10,000	21.4	19.6	20.4	18.0	18.7	18.3	15.5	16.3	14.9	-8.6

Source: State of California Department of Justice, California Criminal Justice Profile, 2002; State of California, Department of Finance, Race/Ethnic Population with Age and Sex Detail, 1970-2040, Sacramento, CA, December 1998.

Juvenile Drug Arrests

Drug arrest data is a useful tool in the analysis of social conditions in a region and a resource for developing strategies to address issues involving drug-related crime and other social problems.

Juvenile Felony Drug Arrests, Santa Cruz County

Drug	1995	1996	1997	1998	1999	2000	2001	2002	% Change
Narcotics	44	42	36	48	31	26	37	32	-13.5
Marijuana	17	25	25	30	26	23	23	21	-8.7
Dangerous Drugs	23	18	15	11	19	16	6	14	133.3
Other Drug Violations	3	2	1	1	0	0	0	1	N/a
County Total	87	87	77	90	76	65	66	68	3.0

Juvenile Misdemeanor Drug Arrests, Santa Cruz County

Drug	1995	1996	1997	1998	1999	2000	2001	2002	% Change
Marijuana	126	109	103	142	123	116	163	184	12.9
Other Drug Violations	46	52	96	90	81	52	56	56	0.0
County Total	172	161	199	232	204	168	219	240	9.6

Source: State of California Department of Justice, California Criminal Justice Profile, 2002.

QUALITY OF LIFE INDICATOR 94

Adult Drug Arrests

Adult Felony Drug Arrests, Santa Cruz County

Drug	1995	1996	1997	1998	1999	2000	2001	2002	% Change
Narcotics	652	664	712	612	537	504	441	412	-6.6
Marijuana	128	152	154	155	137	109	73	127	74.0
Dangerous Drugs	176	174	325	274	258	225	227	227	0.0
Other Drug Violations	21	21	22	30	18	24	21	18	-14.3
County Total	977	1,011	1,213	1,071	950	862	762	784	2.9

Adult Misdemeanor Drug Arrests, Santa Cruz County

Drug	1995	1996	1997	1998	1999	2000	2001	2002	% Change
Marijuana	198	295	284	319	390	367	351	354	0.9
Other Drug Violations	506	668	760	759	798	787	740	681	-8.0
Total Arrests	704	963	1,044	1,078	1,188	1,154	1,091	1,035	-5.1

Source: State of California Department of Justice, California Criminal Justice Profile, 2002.