



Public Safety Issues

"The thing that contributes to my quality of life is the lack of crime."

—Telephone survey respondent

A Summary of Santa Cruz County's Public Safety, 2001

Our Goals

By the Year 2004,

crime within Santa Cruz County will continue to decrease, and residents will have increased confidence in their personal safety at home and in the community.

By the Year 2004,

children in Santa Cruz County will live in safer families and communities.

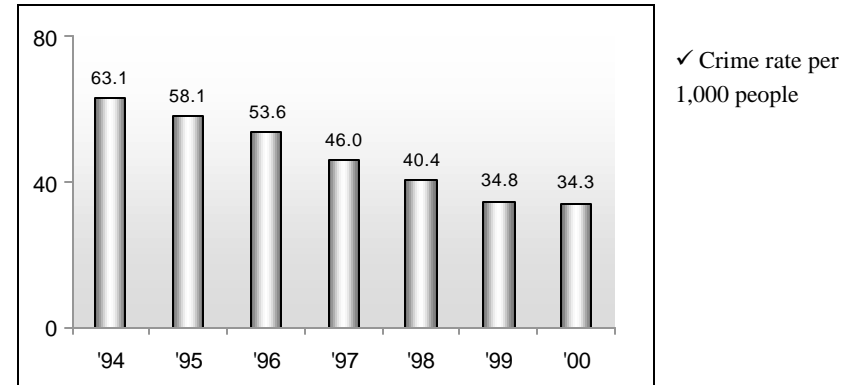
Year seven of the Santa Cruz County Community Assessment Project explored issues related to public safety in the county, using both primary and secondary data sources. Primary data was obtained through an original survey conducted with county residents over the telephone. Questions ranged from satisfaction with law enforcement to concern about crime in the community (including domestic violence) and neighborhood safety. Secondary data included: official counts and/or estimates of crime and arrest rates for all offenses in each county jurisdiction; jail populations (including juvenile hall) and recidivism rates; police officers per capita for all county jurisdictions; and reported incidents of family violence. Together, these two sets of data serve as a snapshot of the perceptions, as well as the realities, of public safety issues in Santa Cruz County.



The most recent edition of the Criminal Justice Profile indicates that the overall crime rate for Santa Cruz County decreased for the seventh year in a row, dropping from 34.8 crimes per 1,000 residents in 1999 to 34.3 in 2000. This compared to the overall crime rate for California, which decreased from 37.8 crimes per

1,000 residents in 1999 to 37.3 in 2000, marking seven consecutive years of crime rate decrease for the state as well, though the decrease was less dramatic this year, for both county and state, than in any previous year of this report.

Crime Rate



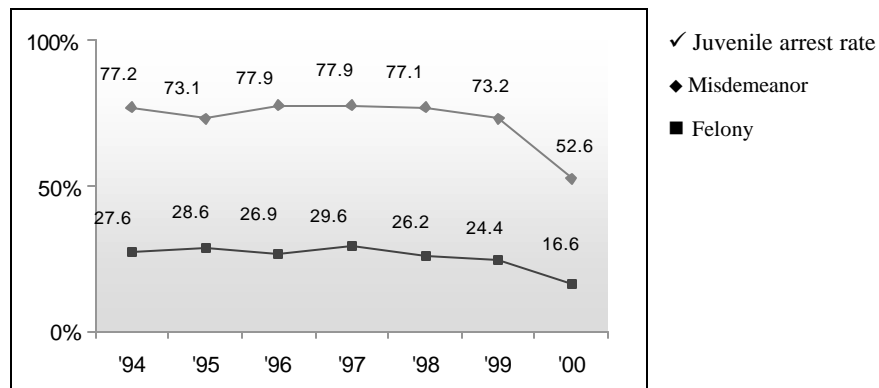
Unfortunately, certain crimes increased in frequency since 1999. The overall rate of violent crime in Santa Cruz County increased from 4.2 violent crimes per 1,000 residents in 1999 to 4.7 in 2000, with a 52.2% increase in the number of rapes reported countywide (up to 102, 21.4% greater than the highest number ever recorded in a CAP year, which was 84 in 1994).

A more encouraging trend was the overall decrease of 26.7% in juvenile crime within Santa Cruz County. There was a 25.7% decrease in the number of misdemeanor arrests for juveniles countywide, as well as a decrease of 29.7% in the number of felony arrests for juveniles countywide. In fact, almost every jurisdiction experienced a decrease in the number of both misdemeanor and felony arrests for juveniles, with the exceptions of Watsonville (with an increase of 35.7% in the number of misdemeanor arrests), Capitola (with an increase of 88% in the number of juvenile felony arrests), and the City of Santa Cruz (with an increase of 6% in the number of juvenile felony arrests).

In terms of incarceration, there was a slight increase (4.9 %) in the total number of inmates reported by the county’s three adult detention facilities (Water Street, Blaine Street, and Rountree Lane) in 2000, but a larger decrease (19.9 %) in the number of repeat offenders, bringing the percentage of inmates who are repeat offenders down from 89.0% to 68.1%.

Admissions to juvenile hall facilities decreased as well, dropping from 63.4 admissions to juvenile hall per 1,000 juveniles in 1999 to 56.6 in 2000. Though admission rates have fallen for both male and female juveniles, there continues to be roughly three times as many males as females incarcerated in juvenile hall facilities (76.6 % male to 23.3 % female in 2000).

Juvenile Arrest Rate



Arrests for driving under the influence were down in Santa Cruz County, with the largest decrease seen in the area of juvenile misdemeanor DUI arrests, dropping from 43 in 1999 to 28 in 2000, a difference of 34.9%. Overall drug arrests of juveniles were down 16.8%, with a 14.5% drop in felony drug arrests and a 17.6% drop in misdemeanor drug arrests for juveniles.

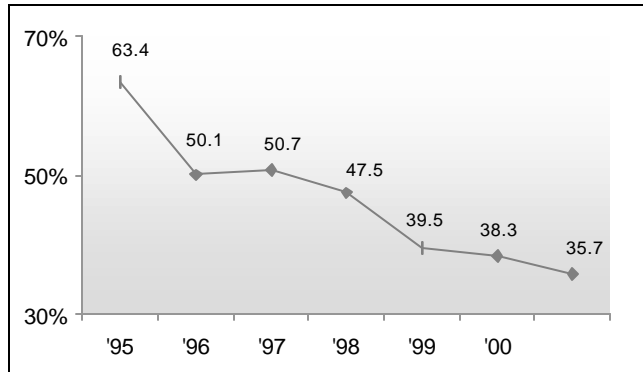
Another factor that directly influences the level of public safety is the availability, effectiveness, and responsiveness of law enforcement officers and agencies. Between 1999 and 2000, the number of sworn officers in Santa Cruz County remained fairly steady, with three of the five jurisdictions (Capitola, Scotts Valley, and Watsonville) showing minimal decreases in the number of officers per capita due to increases in population. The City of Santa Cruz added one officer in the last year, and the Sheriff’s Department added two, bringing the per capita total for these jurisdictions up slightly, in spite of population increases.



Generally speaking, perceptions about the effectiveness of law enforcement in Santa Cruz County have been less favorable in 2001, with fewer respondents indicating that law enforcement is “very effective” in their community. Countywide, the overall percentage of respondents who answered “very effective” dropped from 40.9 to 38.3.

Crime continues to be a concern for residents countywide, with 35.7 % of survey respondents saying they are “very concerned” (down from 38.3 %) about crime in Santa Cruz County. However, the percentage of respondents who said they are “very concerned” about crime in Santa Cruz County dropped in almost every demographic category, with the greatest decrease seen in persons aged 25 to 44. Increases in the percentage of respondents saying they are “very concerned” about crime in the county can be seen in two age categories: 18 to 24 year-olds (up from 26.1 to 37.7%), and those 65 and older (up from 42.6 to 51.9 %).

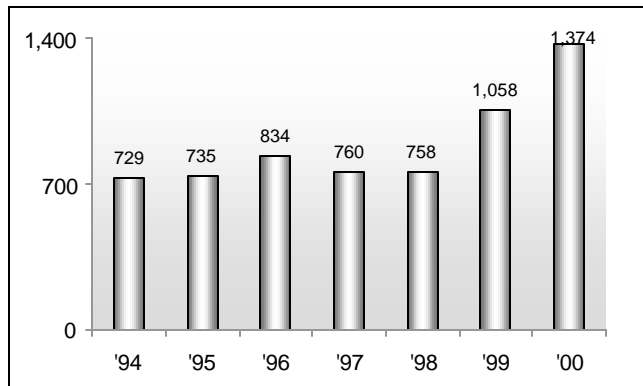
Fear of Crime



✓ Respondents who reported that they are very concerned about crime in Santa Cruz County

Perceptions of neighborhood safety, in contrast, continue to be very high for Santa Cruz County residents on the whole, with only 2.4% of survey respondents saying they “don’t feel at all safe” in their neighborhood. Demographically, however, responses tended to be less consistent, reflecting differences in respondents’ ethnicity and income, though responses by region were consistently higher than last year, with the highest percentage (83.7%) of respondents saying they feel “very safe” in their neighborhood coming from the San Lorenzo Valley. Ethnically, the percentage of respondents saying they felt “very safe” in their neighborhood was much lower for Latinos (down from 62.0 to 46.5%) than for Caucasians (up from 77.0 to 79.7%).

Family Violence



✓ Domestic violence calls for assistance
 *In 1999, the Sheriffs Office changed the method of categorizing domestic violence cases to comply with California Penal Code definitions. Cases that would have previously been classified as assault are now appropriately classified as domestic

Concerns about family violence in Santa Cruz County have become less pronounced as well; the percentage of respondents countywide who said they are “very concerned” about family violence dropped from 62.0 to 55.8 %. In actuality, the overall rate of calls for assistance in domestic violence-related cases has increased considerably in Santa Cruz County, rising by 29.9% over the 1999 total.

Unfortunately, the rate of foster care placements in Santa Cruz County is on the rise, even though rates for California are declining. This year, the rate of placements in Santa Cruz County rose from 5.8 per thousand to 6.2 per thousand, while the rate of placements in California dropped from 11.3 to 11.0. Though the difference between the rates are narrowing, the rate of foster care placement for the State of California continues to be nearly twice that for Santa Cruz County.



QUALITY OF LIFE INDICATOR 73

Crime Rate – County

The specific crimes that are tracked are used to determine the rise or fall in the crime rate both locally and nation-wide.



Definition of Crimes - Santa Cruz County FBI Crime Index:

Homicide: the willful (non-negligent) killing of one human being by another. Murder and non-negligent manslaughter are included in this definition.

Rape: the carnal knowledge of a female forcibly and against her will.

Robbery: the taking or attempting to take anything of value from the custody, care, or control of a person or persons by force or threat of force or violence and/or by creating fear in the victim.

Aggravated Assault: an unlawful attack or attempted attack by one person upon another for the purpose of inflicting severe or aggravated bodily injury. This type of assault is usually accompanied by the use of a weapon or by means likely to produce death or great bodily harm.

Burglary: the unlawful entry of a structure to commit a felony or a theft.

Motor Vehicle Theft: the theft or attempted theft of a motor vehicle.

Larceny: the unlawful taking, carrying, leading, or riding away of property from the possession of another (except embezzlement, fraud, forgery, and worthless checks).

Arson: any willful or malicious burning or attempt to burn, with or without intent to defraud, a dwelling house, public building, motor vehicle or aircraft, personal property of another, etc.

Santa Cruz County

Violent Crimes	1994	1995	1996	1997	1998	1999	2000	% Change
Homicide	6	8	10	4	9	4	9	125.0
Rape	84	77	66	69	58	67	102	52.2
Robbery	305	286	289	249	188	165	171	3.6
Aggravated Assault*	1,282	1,386	1,375	955	1,139	829	905	9.2
Total Violent Crimes	1,677	1,757	1,740	1,277	1,394	1,065	1,187	11.5
Violent Crime Rate	7.1	7.3	7.2	5.2	5.6	4.2	4.7	-

Source: California Criminal Justice Profile, 2000; Department of Finance Population Estimates, 2001.

* In 1999, the Sheriff's Department changed the method of categorizing domestic violence cases to comply with California Penal Code definitions. Cases that would have been classified as assault before 1999 are now being appropriately classified as domestic violence cases.

Crime Rate – County

Santa Cruz County

Property Crimes	1994	1995	1996	1997	1998	1999	2000	% Change
Burglary	2,636	2,486	2,194	1,901	1,629	1,597	1,468	-8.1
Larceny	9,923	8,874	8,177	7,516	6,422	5,573	5,516	-1.0
Motor Vehicle Theft	680	726	811	506	540	442	520	17.6
Arson	90	97	73	87	66	84	44	-47.6
Total Property Crimes	13,329	12,183	11,255	10,012	8,657	7,696	7,548	-1.9
Property Crime Rate	56.1	50.8	46.4	40.8	34.8	30.5	29.6	-

Total	1994	1995	1996	1997	1998	1999	2000	% Change
Crimes	15,006	13,940	12,995	11,289	10,051	8,761	8,735	-0.3
Population	237,800	240,000	242,500	245,400	249,000	252,100	255,000	1.2
County Crime Rate	63.1	58.1	53.6	46.0	40.4	34.8	34.3	-
State Crime Rate	61.9	58.2	52.0	48.5	43.1	37.8	37.3	-

Source: California Criminal Justice Profile, 2000; Department of Finance Population Estimates, 2001.

The crime rate is calculated by dividing the number of reported crimes by the total population and then multiplying the result by 100,000. Due to the smaller populations of Santa Cruz County Cities, the result has been multiplied by 1,000 instead of 100,000 to arrive at the crime rate shown above. The county totals include the California Highway Patrol, U.C. Santa Cruz, Santa Cruz Mountains Department of Parks and Recreation and the Union Pacific Railroad

QUALITY OF LIFE INDICATOR 73

Crime Rate – Capitola

City of Capitola

Violent Crime	1994	1995	1996	1997	1998	1999	2000	% Change
Homicide	0	0	1	0	0	0	0	0.0
Rape	2	1	1	2	2	2	2	0.0
Robbery	9	12	13	12	9	11	11	0.0
Aggravated Assault	77	45	46	34	43	51	49	-3.9
Total Violent Crimes	88	58	61	48	54	64	62	-3.1
Violent Crime Rate	8.5	5.4	5.6	4.4	4.9	5.8	5.5	-

Property Crime	1994	1995	1996	1997	1998	1999	2000	% Change
Burglary	75	84	85	63	43	46	75	63.0
Larceny	1,041	1,029	984	849	746	649	519	-20.0
Motor Vehicle Theft	39	42	42	29	18	8	17	112.5
Arson	1	5	2	1	1	3	3	0.0
Total Property Crimes	1,156	1,160	1,113	942	808	706	614	-13.0
Property Crime Rate	111.2	108.4	103.1	86.8	73.5	63.6	54.8	-

Total Crimes	1,244	1,218	1,174	990	862	770	676	-12.2
Population	10,400	10,700	10,800	10,850	11,000	11,100	11,200	0.9
Capitola Crime Rate	119.6	113.8	108.7	91.2	78.4	69.4	60.4	-
County Crime Rate	63.1	58.1	53.6	46.0	40.4	34.8	34.3	-
State Crime Rate	61.9	58.2	52.0	48.5	43.1	37.8	37.3	-

Source: California Criminal Justice Profile, 2000; Department of Finance Population Estimates, 2001.

The crime rate is calculated by dividing the number of reported crimes by the total population and then multiplying the result by 100,000. Due to the smaller populations of Santa Cruz County Cities, the result has been multiplied by 1,000 instead of 100,000 to arrive at the crime rate shown above.

Crime Rate - Santa Cruz

City of Santa Cruz

Violent Crime	1994	1995	1996	1997	1998	1999	2000	% Change
Homicide	3	4	2	1	2	1	3	200.0
Rape	20	14	12	19	7	19	48	152.6
Robbery	130	104	105	85	68	79	72	-8.9
Aggravated Assault	347	363	460	404	322	283	421	48.8
Total Violent Crimes	500	485	579	509	399	382	544	42.4
Violent Crime Rate	9.7	9.3	11.0	9.6	7.3	6.9	9.7	-

Property Crime	1994	1995	1996	1997	1998	1999	2000	% Change
Burglary	756	604	601	479	343	358	400	11.7
Larceny	3,294	2,755	2,761	2,371	1,977	1,734	1,823	5.1
Motor Vehicle Theft	188	229	232	237	156	140	197	40.7
Arson	20	18	27	37	25	33	10	-69.7
Total Property Crimes	4,258	3,606	3,621	3,124	2,503	2,265	2,430	7.3
Property Crime Rate	82.7	69.2	68.7	58.8	46.1	40.7	43.4	-

Total Crimes	4,758	4,091	4,200	3,633	2,902	2,647	2,974	12.4
Population	51,500	52,100	52,700	53,100	54,300	55,600	56,000	0.7
Santa Cruz City Crime Rate	92.4	78.5	79.7	68.4	53.4	47.6	53.1	-
County Crime Rate	63.1	58.1	53.6	46.0	40.4	34.8	34.3	-
State Crime Rate	61.9	58.2	52.0	48.5	43.1	37.8	37.3	-

Source: California Criminal Justice Profile, 2000; Department of Finance Population Estimates, 2001.

The crime rate is calculated by dividing the number of reported crimes by the total population and then multiplying the result by 100,000. Due to the smaller populations of Santa Cruz County Cities, the result has been multiplied by 1,000 instead of 100,000 to arrive at the crime rate shown above.

QUALITY OF LIFE INDICATOR 73

Crime Rate - Scotts Valley

City of Scotts Valley

Violent Crime	1994	1995	1996	1997	1998	1999	2000	% Change
Homicide	0	0	0	0	0	0	0	0.0
Rape	1	1	1	3	2	1	2	100.0
Robbery	5	2	3	3	3	2	4	100.0
Aggravated Assault	24	18	23	16	25	25	38	52.0
Total Violent Crimes	30	21	27	22	30	28	44	57.1
Violent Crime Rate	3.2	2.2	2.7	2.2	2.9	2.6	4.1	-

Property Crime	1994	1995	1996	1997	1998	1999	2000	% Change
Burglary	90	82	83	59	36	69	67	-2.9
Larceny	370	363	319	262	247	227	252	11.0
Motor Vehicle Theft	22	16	12	14	4	8	8	0.0
Arson	11	7	8	6	7	6	0	-100.0
Total Property Crimes	493	468	422	341	294	310	327	5.5
Property Crime Rate	52.4	48.6	43.0	33.9	28.0	29.1	30.1	-

Total Crimes	523	489	449	363	324	338	371	9.8
Population	9,400	9,625	9,825	10,050	10,500	10,650	10,850	1.9
Scotts Valley Crime Rate	55.6	50.8	45.7	35.8	30.9	31.7	34.2	-
County Crime Rate	63.1	58.1	53.6	46.0	40.4	34.8	34.3	-
State Crime Rate	61.9	58.2	52.0	48.5	43.1	37.8	37.3	-

Source: California Criminal Justice Profile, 2000; Department of Finance Population Estimates, 2001.

The crime rate is calculated by dividing the number of reported crimes by the total population and then multiplying the result by 100,000. Due to the smaller populations of Santa Cruz County Cities, the result has been multiplied by 1,000 instead of 100,000 to arrive at the crime rate shown above.

Crime Rate – Watsonville

City of Watsonville

Violent Crime	1994	1995	1996	1997	1998	1999	2000	% Change
Homicide	1	1	6	0	3	2	1	-50.0
Rape	14	18	10	11	17	8	19	137.5
Robbery	83	98	87	93	63	50	59	18.0
Aggravated Assault	286	412	455	375	388	279	224	-19.7
Total Violent Crimes	384	529	558	479	471	339	303	-10.6
Violent Crime Rate	11.6	15.8	16.5	13.1	12.7	9.1	8.0	-

Property Crime	1994	1995	1996	1997	1998	1999	2000	% Change
Burglary	357	359	378	393	305	334	305	-8.7
Larceny	1,839	1,747	1,383	1,602	1,250	1,039	1,149	10.6
Motor Vehicle Theft	174	189	154	215	149	119	134	12.6
Arson	8	9	7	14	6	7	2	-71.4
Total Property Crimes	2,378	2,304	1,922	2,226	1,710	1,499	1,590	6.1
Property Crime Rate	72.1	68.9	56.8	60.8	46.2	40.1	41.7	-

Total Crimes	2,762	2,833	2,480	2,703	2,181	1,838	1,893	3.0
Population	33,000	33,450	33,850	36,600	37,000	37,400	38,100	1.9
Watsonville Crime Rate	83.7	84.7	73.3	73.9	58.9	49.1	49.7	-
County Crime Rate	63.1	58.1	53.6	46.0	40.4	34.8	34.3	-
State Crime Rate	61.9	58.2	52.0	48.5	43.1	37.8	37.3	-

Source: California Criminal Justice Profile, 2000; Department of Finance Population Estimates, 2001.

The crime rate is calculated by dividing the number of reported crimes by the total population and then multiplying the result by 100,000. Due to the smaller populations of Santa Cruz County Cities, the result has been multiplied by 1,000 instead of 100,000 to arrive at the crime rate shown above.

QUALITY OF LIFE INDICATOR 73

Crime Rate - Unincorporated Areas

Unincorporated Areas (Sheriff's Department)

Violent Crime	1994	1995	1996	1997	1998	1999	2000	% Change
Homicide	2	3	1	3	4	1	4	300.0
Rape	46	40	43	34	28	34	27	-20.6
Robbery	77	69	68	56	44	19	25	31.6
Aggravated Assault*	536	513	391	406	351	182	163	-10.4
Total Violent Crimes	661	625	503	499	427	236	219	-7.2
Violent Crime Rate	5.0	4.7	3.7	3.7	3.1	1.7	1.6	-
Property Crime	1994	1995	1996	1997	1998	1999	2000	% Change
Burglary	1,204	1,268	964	907	851	749	599	-20.0
Larceny	2,812	2,567	2,730	2,432	1,922	1,609	1,560	-3.0
Motor Vehicle Theft	22	1	15	11	11	15	12	-20.0
Arson	49	49	29	29	23	33	28	-15.2
Total Property Crimes	4,087	3,885	3,738	3,379	2,807	2,406	2,199	-8.6
Property Crime Rate	30.6	29.0	27.6	25.1	20.6	17.5	15.8	-
Total Crimes	4,748	4,510	4,241	3,878	3,234	2,642	2,418	-8.5
Population	133,500	134,100	135,400	134,800	136,200	137,300	138,800	1.1
Unincorporated Crime Rate	35.6	33.6	31.3	28.8	23.7	19.2	17.4	-
County Crime Rate	63.1	58.1	53.6	46.0	40.4	34.8	34.3	-
State Crime Rate	61.9	58.2	52.0	48.5	43.1	37.8	37.3	-

Source: California Criminal Justice Profile, 2000; Department of Finance Population Estimates, 2001.

The crime rate is calculated by dividing the number of reported crimes by the total population and then multiplying the result by 100,000. Due to the smaller populations of Santa Cruz County Cities, the result has been multiplied by 1,000 instead of 100,000 to arrive at the crime rate shown above. Unincorporated areas are covered by the Santa Cruz County Sheriff's Office and include all areas except the cities of Capitola, Santa Cruz, Scotts Valley, and Watsonville.

* In 1999, the Sheriff's Department changed the method of categorizing domestic violence cases to comply with California Penal Code definitions. Cases that would have been classified as assault before 1999 are now being appropriately classified as domestic violence cases.

Jail Population Characteristics

As the number of people under criminal justice supervision continues to rise, more attention is being given to decreasing recidivism, the repeated or habitual relapse into criminal activities.

Average Daily Jail Population County

Facility	1995	1996	1997	1998	1999	2000	% Change
Water Street Facility	365	341	373	375	322	337	4.7
Blaine Street Facility	19	21	28	33	31	24	-22.6
Rountree Lane Facilities	124	176	200	218	230	219	-4.8

Number of Repeat Offenders

Prisoner Type	1995	1996	1997	1998	1999	2000	% Change
Total Inmates	7,090	7,154	7,679	7,141	8,162	8,566	4.9
Repeat Offenders	6,057	6,111	6,670	6,079	7,277	5,830	-19.9
Percent Who Were Repeat Offenders	85.0	86.0	87.0	85.0	89.0	68.1	-

Source: Santa Cruz County Sheriff's Office, Sheriff's Detention Bureau, 2000.

The Water Street Facility figure includes pre-trial sentenced men and women; Blaine Street Facility figure includes sentenced men and women; Rountree Lane Facility figure includes sentenced men in medium and minimum security.

Prisoners by Ethnicity, Water Street Jail Facility

Ethnicity	1994	1995	1996	1997	1998	1999	2000	% Change
Caucasian	3,464	3,613	3,638	3,665	3,765	3,698	4,839	30.9
Hispanic	2,692	2,946	3,009	2,590	2,903	2,615	3,021	15.5
African American	409	424	419	343	371	371	330	-11.1
Asian	63	38	25	17	24	32	54	68.8
American Indian	36	38	44	36	45	39	34	-12.8
Filipino	9	9	9	10	15	15	19	26.7
Other	14	22	10	9	21	25	53	112.0

Alcohol Related Bookings

Water Street Jail Facility	1995	1996	1997	1998	1999	2000	% Change
Alcohol Related Bookings	8,206	6,734	9,702	6,921	6,392	5,768	-9.8
Total Bookings	15,203	15,777	16,583	16,865	15,665	12,540	-19.9
Percent of Total Bookings	54.0	42.7	58.5	41.0	40.8	46.0	-

Source: Santa Cruz County Sheriff's Office, Water Street Jail, 2000.

QUALITY OF LIFE INDICATOR 75

Juvenile Crime

This indicator measures the number of felony and misdemeanor arrests to persons under the age of 18.



Santa Cruz County

Misdemeanor	1994	1995	1996	1997	1998	1999	2000	% Change
Capitola Police Department	439	392	319	269	316	257	177	-31.1
Santa Cruz Police Department	376	351	422	482	451	507	360	-29.0
Santa Cruz County Sheriff's Office	527	568	706	829	816	726	393	-45.9
Scotts Valley Police Department	124	109	128	91	73	111	69	-37.8
Watsonville Police Department	272	293	285	277	316	300	407	35.7
Total Juvenile Misdemeanor Arrests*	1,836	1,791	1,953	2,010	2,036	1,980	1,471	-25.7
Juvenile Population (10-17)	23,789	24,509	25,063	25,815	26,416	27,038	27,991	3.5
Juvenile Misdemeanor Arrest Rate	77.2	73.1	77.9	77.9	77.1	73.2	52.6	-

Felony	1994	1995	1996	1997	1998	1999	2000	% Change
Capitola Police Department	63	44	28	41	39	25	47	88.0
Santa Cruz Police Department	154	184	145	131	122	117	124	6.0
Santa Cruz County Sheriff's Office	233	234	293	356	325	347	160	-53.9
Scotts Valley Police Department	42	43	40	36	16	29	21	-27.6
Watsonville Police Department	133	151	141	168	165	133	103	-22.6
Total Juvenile Felony Arrests*	656	700	674	764	691	661	465	-29.7
Juvenile Population (10-17)	23,789	24,509	25,063	25,815	26,416	27,038	27,991	3.5
Juvenile Felony Arrest Rate	27.6	28.6	26.9	29.6	26.2	24.4	16.6	-

Totals	1994	1995	1996	1997	1998	1999	2000	% Change
Juvenile Arrests (Misdemeanor and Felony)	2,492	2,491	2,627	2,774	2,727	2,641	1,936	-26.7
Juvenile Population (10-17)	23,789	24,509	25,063	25,815	26,416	27,038	27,991	3.5
Total Juvenile Crime Rate	104.8	101.6	104.8	107.5	103.2	97.7	69.2	-

Source: California Criminal Justice Profile, 2000; Department of Finance Population Estimates, 2001.

Note: The crime rate is calculated by dividing the number of reported crimes by the total population and then multiplying by 100,000. Due to the smaller population of Santa Cruz County, the result has been multiplied by 1,000 instead of 100,000 to arrive at the crime rates shown above. Juvenile population includes all ages from 10–17.

* The total of all jurisdictions will not equal county total. The county total includes the California Highway Patrol, U.C. Santa Cruz, Santa Cruz Mountains Department of Parks and Recreation and the Union Pacific Railroad.

Juvenile Crime

Felony and Misdemeanor Crimes

Ethnicity	1994	1995	1996	1997	1998	1999	2000	% Change
Caucasian	1,403	1,273	1,365	1,524	1,581	1,619	1,107	-31.6
Hispanic	957	948	958	1,016	1,000	867	825	-4.8
African American	98	109	120	92	92	106	70	-34.0
Other	34	39	64	49	54	49	41	-16.3

Felony and Misdemeanor Crimes

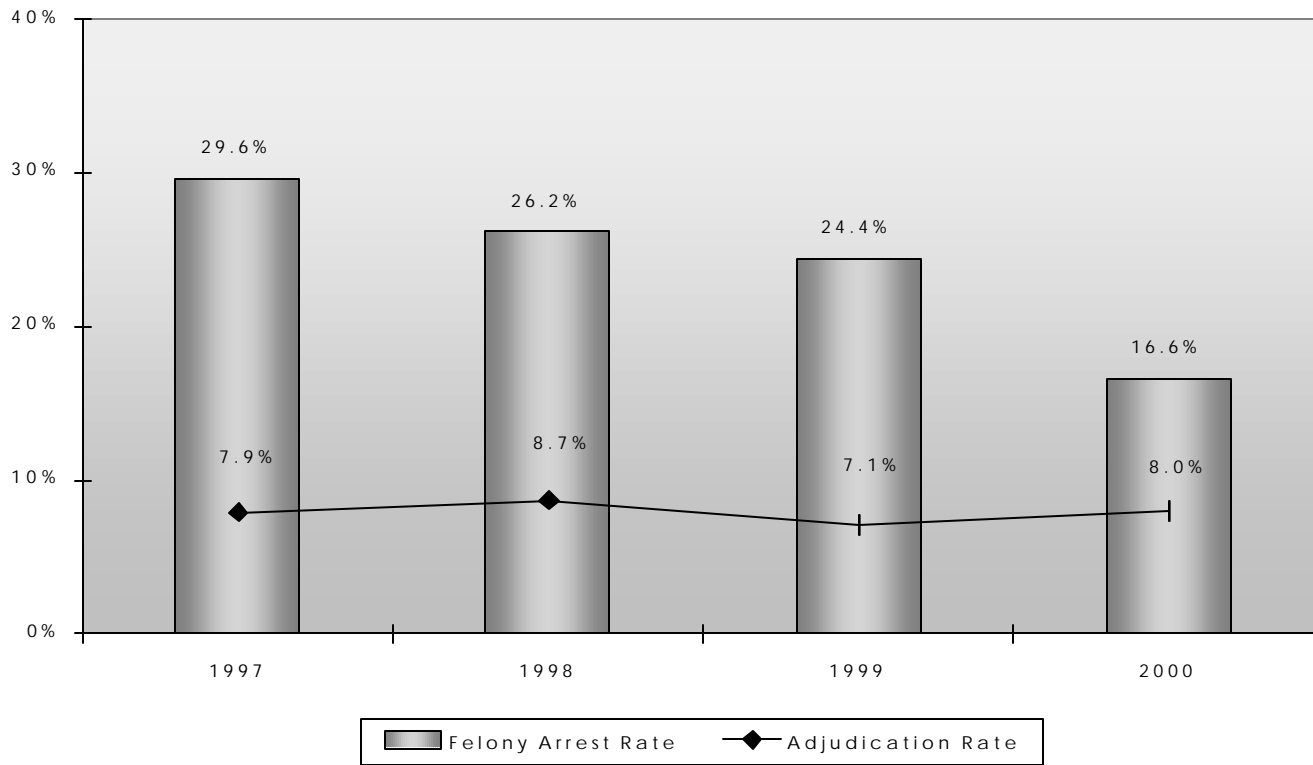
Age	1994	1995	1996	1997	1998	1999	2000	% Change
10 and under	30	18	22	42	20	26	4	-84.6
11	34	22	48	34	33	12	16	33.3
12	141	106	114	81	93	44	52	18.2
13	243	228	361	221	204	207	145	-30.0
14	405	379	306	404	379	369	314	-14.9
15	493	529	517	540	534	515	409	-20.6
16	858	605	619	638	697	655	546	-16.6
17	558	604	654	721	767	813	557	-31.5

Source: California Criminal Justice Profile, 2000.

QUALITY OF LIFE INDICATOR 76

Juvenile Felony Arrests / Adjudications

Only a portion of youth who are arrested are referred to juvenile court for adjudication, which means formal handling by the court.



Source: California Department of Justice, California Criminal Justice Profile, Santa Cruz County, 2000; Department of Finance Population Estimates, 2001.

The crime rate is calculated by dividing the number of reported crimes or adjudications by the total population and then multiplying by 100,000. Due to the smaller population of Santa Cruz County, the result has been multiplied by 1,000 instead of 100,000 to arrive at the crime rates shown above. Juvenile population includes all ages from 10–17.

Juvenile Hall Admissions

Number of Yearly Admissions, Santa Cruz County
1990-2000

Year	Annual Admissions	Juvenile Population 10-17	Juvenile Admissions Rate	Average Monthly Admissions
1990	1,405	22,318	63.0	117
1991	1,559	22,295	69.9	130
1992	1,488	22,762	65.4	124
1993	1,568	23,264	67.4	131
1994	1,539	23,789	64.7	128
1995	1,530	24,509	62.4	129
1996	1,751	25,063	69.9	146
1997	1,593	25,815	61.7	133
1998	1,576	26,416	59.7	131
1999	1,713	27,038	63.4	143
2000	1,583	27,991	56.6	132

Source: California Youth Authority, Statewide Juvenile Hall Reports, 2000; Department of Finance Population Estimates, 2001.

Number of Admissions, by Gender

Year	Male		Female		Total
	Number	Percent	Number	Percent	
1990	1,129	80.4	276	19.6	1,405
1991	1,259	80.8	300	19.2	1,559
1992	1,218	81.9	270	18.1	1,488
1993	1,285	82.0	283	18.0	1,568
1994	1,269	82.5	270	17.5	1,539
1995	1,249	80.6	301	19.4	1,550
1996	1,395	79.7	356	20.3	1,751
1997	1,234	77.5	359	22.5	1,593
1998	1,251	79.4	325	20.6	1,576
1999	1,320	77.1	393	22.9	1,713
2000	1,213	76.6	370	23.3	1,583

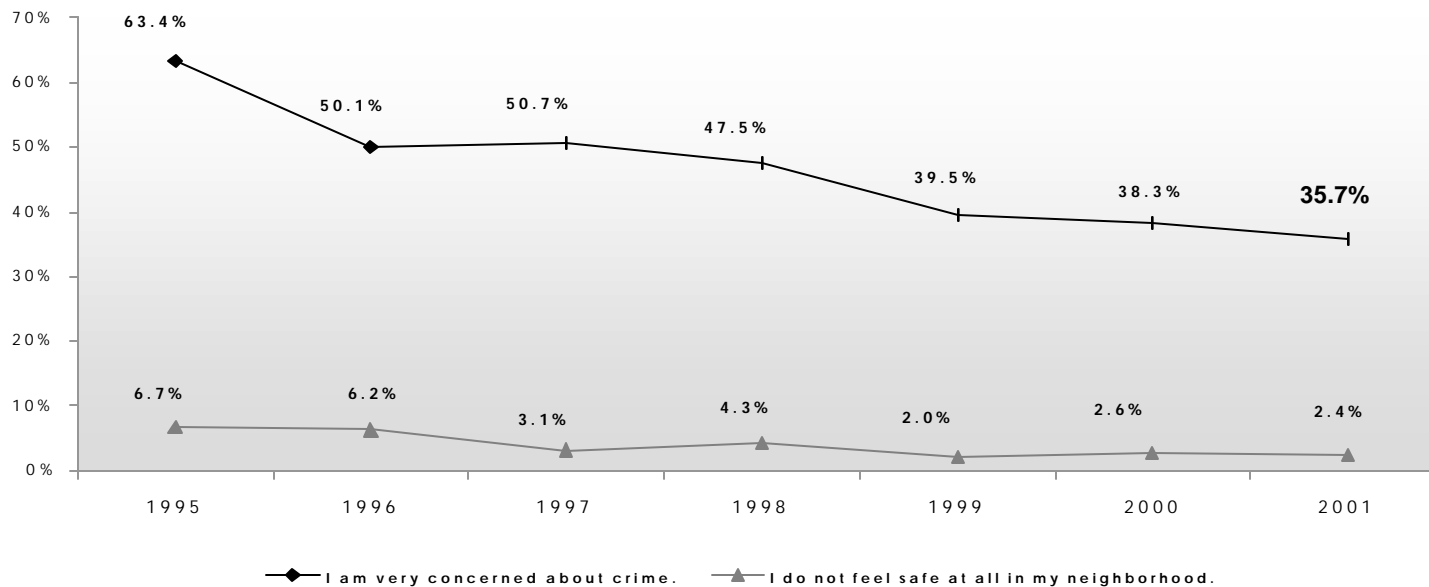
QUALITY OF LIFE INDICATOR 78

Concern about Crime / Neighborhood Safety

Measuring people’s perception of safety in their community has become a key indicator for measuring the success of community-oriented policing.

How concerned are you about crime in Santa Cruz County?

How safe would you say you feel in your neighborhood?



Total respondents	1995	1996	1997	1998	1999	2000	2001
How concerned are you about crime in Santa Cruz County?	347	489	507	512	559	658	699
How safe would you say you feel in your neighborhood?	344	498	509	513	560	657	706

Source: Santa Cruz Community Assessment Project, Telephone Survey.
 *See appendix for results of statistical testing for these questions.

Concern about Crime

Respondent Profile

Percent of respondents who are “very concerned” about crime in Santa Cruz County:

By Ethnicity	1998	1999	2000	*2001	2001 N
Caucasian	42.6	35.9	30.1	27.7	490
Latino	67.0	57.3	68.3	60.9	159

By Gender	1998	1999	2000	2001	2001 N
Male	-	35.8	31.0	32.1	351
Female	-	41.5	43.4	39.3	348

By Region	1998	1999	2000	*2001	2001 N
North County	44.2	33.2	33.8	27.6	200
South County	54.6	52.6	51.3	48.6	290
San Lorenzo Valley	40.4	32.2	30.1	24.3	212

By Income	1999	2000	*2001	2001 N
Less than \$34,999	44.8	49.1	45.2	253
\$35,000 - \$65,499	36.0	35.9	33.0	172
\$65,500 and greater	36.2	26.2	21.8	208

By Age	1998	1999	2000	*2001	2001 N
18-24	-	22.0	26.1	37.7	76
25-44	-	40.7	42.4	24.5	215
45-64	-	43.8	36.5	34.5	254
65 and older	-	44.4	42.6	51.9	153

* Indicates statistically significant survey responses when reporting differences between sub-groups for the 2001 data. Absence of this symbol indicates no statistical significance difference between sub-groups for the 2001 data. For comparisons involving more than 2 groups (region, age and income), footnotes at the bottom of the page indicate which specific comparisons are significant.

Source: Santa Cruz Community Assessment Project, Telephone Survey.

Significance Testing

Region: North County significantly lower than South County; San Lorenzo Valley significantly lower than South County

Age: 25-44 years significantly lower than 65 and older; 45-64 years significantly lower than 65 and older

Income: \$34,999 or less significantly higher than \$65,500 or more

QUALITY OF LIFE INDICATOR 78

Neighborhood Safety

Respondent Profile

Percent of respondents who said they feel “very safe” in their neighborhood:

By Ethnicity	1998	1999	2000	*2001	2001 N
Caucasian	76.1	71.0	77.0	79.7	493
Latino	51.1	58.4	62.0	46.5	159

By Gender	1998	1999	2000	2001	2001 N
Male	-	72.8	70.8	69.2	353
Female	-	66.0	72.9	74.8	353

By Region	1998	1999	2000	*2001	2001 N
North County	68.3	70.9	73.0	73.7	203
South County	66.2	61.8	64.6	67.6	290
San Lorenzo Valley	81.9	75.0	82.3	83.7	212

By Income	1999	2000	*2001	2001 N
Less than \$34,999	68.5	62.7	63.0	257
\$35,000 - \$65,499	73.6	76.8	73.1	174
\$65,500 and greater	67.8	81.0	85.5	210

By Age	1998	1999	2000	2001	2001 N
18-24	-	74.4	73.9	58.3	76
25-44	-	66.4	65.1	72.3	217
45-64	-	69.1	75.0	74.5	258
65 and older	-	70.4	84.9	74.0	154

* Indicates statistically significant survey responses when reporting differences between sub-groups for the 2001 data. Absence of this symbol indicates no statistical significance difference between sub-groups for the 2001 data. For comparisons involving more than 2 groups (region, age and income), footnotes at the bottom of the page indicate which specific comparisons are significant.

Source: Santa Cruz Community Assessment Project, Telephone Survey.

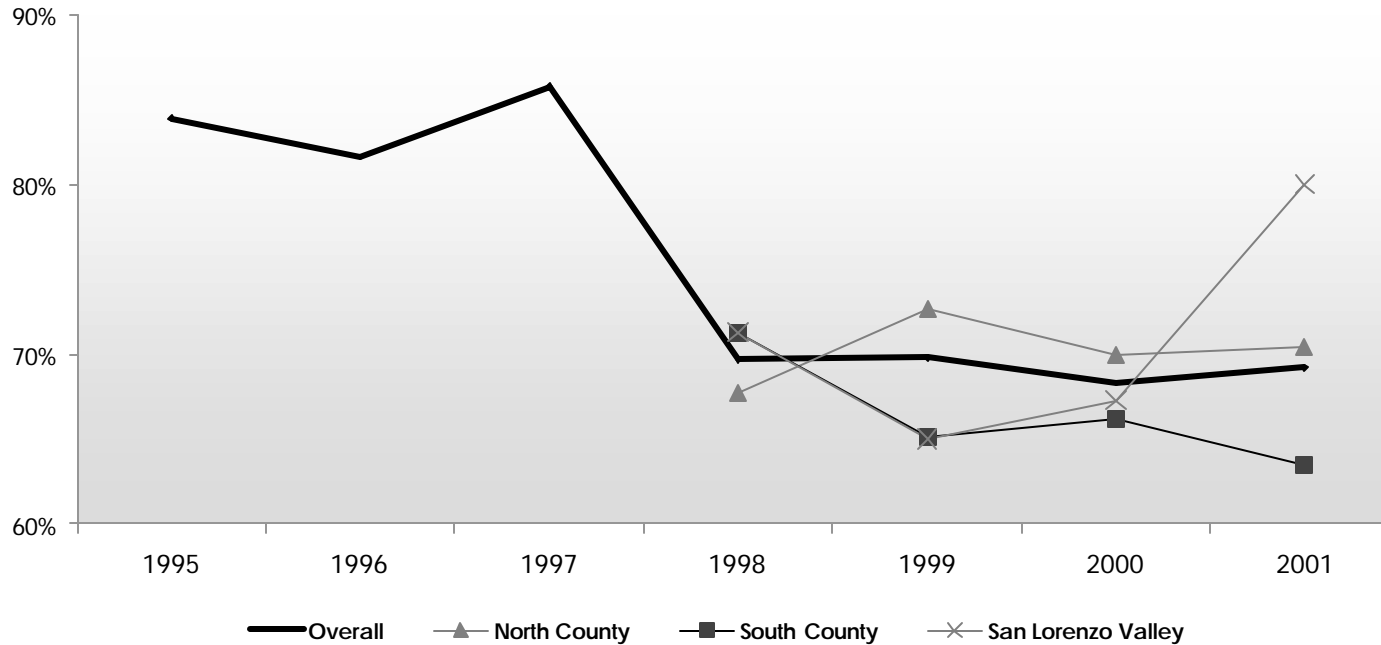
Significance Testing

Region: San Lorenzo Valley significantly higher than South County

Income: \$34,999 or less significantly lower than \$35,000 to \$65,499; \$34,999 or less significantly lower than \$65,500 or more

Neighborhood Safety - Children

*Do you feel children have a safe place to play in your neighborhood?** (Respondents answering “yes”)



Response	1995	1996	1997	1998	1999	2000	2001
Yes (%)	83.9	81.6	85.8	69.7	69.8	68.3	69.2
No (%)	16.1	18.4	14.2	25.0	26.2	23.4	26.5

Respondents	1995	1996	1997	1998	1999	2000	2001
Overall	124	179	169	512	557	657	696
North County	-	-	-	223	313	345	200
South County	-	-	-	195	173	195	286
San Lorenzo Valley	-	-	-	94	60	113	211

Source: Santa Cruz Community Assessment Project, Telephone Survey.

*Starting in 1998, this question was asked of the all respondents; in prior years only parents were asked. Therefore, the number of respondents increased in 1998-2001.

*See appendix for results of statistical testing for this question.

QUALITY OF LIFE INDICATOR 78

Neighborhood Safety - Children

Respondent Profile

Percent of respondents who answered “yes” to: “Do you feel children have a safe place to play in your neighborhood?”

By Ethnicity	1998	1999	2000	*2001	2001 N
Caucasian	71.1	68.5	67.8	73.8	483
Latino	65.2	75.0	66.9	59.8	159

By Gender	1998	1999	2000	2001	2001 N
Male	-	75.8	70.0	72.8	349
Female	-	67.2	67.3	65.5	347

By Region	1998	1999	2000	*2001	2001 N
North County	67.7	72.7	69.9	70.4	200
South County	71.3	65.1	66.2	63.5	286
San Lorenzo Valley	71.3	65.0	67.3	80.0	211

By Income	1999	2000	*2001	2001 N
Less than \$34,999	66.7	63.8	63.6	252
\$35,000 - \$65,499	74.0	71.8	70.9	172
\$65,500 and greater	71.5	72.0	77.3	208

By Age	1998	1999	2000	*2001	2001 N
18-24	-	76.5	72.8	74.8	76
25-44	-	73.3	71.8	74.6	217
45-64	-	67.6	70.8	72.0	256
65 and older	-	58.0	50.0	54.1	146

* Indicates statistically significant survey responses when reporting differences between sub-groups for the 2001 data. Absence of this symbol indicates no statistical significance difference between sub-groups for the 2001 data. For comparisons involving more than 2 groups (region, age and income), footnotes at the bottom of the page indicate which specific comparisons are significant.

Source: Santa Cruz Community Assessment Project, Telephone Survey.

Significance Testing

- Region:** San Lorenzo Valley significantly higher than South County
- Age:** 18-24 years significantly higher than 65 and older; 25-44 years significantly higher than 65 and older; 45-64 years significantly higher than 65 and older

- Income:** \$34,999 or less significantly lower than \$65,500 or more

Police Officers Per Capita

The ratio of full time officers to population is an important indicator of access to public safety resources.

Santa Cruz County

Agency	Number of Sworn Officers					
	1995	1996	1997	1998	1999	2000
Capitola Police Department	22	22	22	23	23	23
Santa Cruz Police Department	84	91	93	94	95	96
Santa Cruz County Sheriff (Unincorporated areas)	136	141	146	150	135	137
Scotts Valley Police Department	21	21	21	21	22	22
Watsonville Police Department	48	54	57	57	62	62

Agency	Officers Per Capita					
	1995	1996	1997	1998	1999	2000
Capitola Police Department	1 per 486	1 per 491	1 per 493	1 per 480	1 per 485	1 per 487
Santa Cruz Police Department	1 per 620	1 per 579	1 per 571	1 per 583	1 per 586	1 per 583
Santa Cruz County Sheriff (Unincorporated areas)	1 per 986	1 per 960	1 per 923	1 per 912	1 per 1,020	1 per 1,013
Scotts Valley Police Department	1 per 458	1 per 468	1 per 479	1 per 502	1 per 486	1 per 493
Watsonville Police Department	1 per 696	1 per 634	1 per 642	1 per 651	1 per 605	1 per 615

Source: All Santa Cruz County Law Enforcement Jurisdictions, 2001; Department of Finance Population Estimates, 2001.

The officer per capita figure is calculated by dividing the total population in a given jurisdiction by the 2001 Number of sworn officers in that jurisdiction. Officer count is typically performed during the month of October.

QUALITY OF LIFE INDICATOR 80

Police Response

Response times are important, especially for crimes in progress. These statistics are for overall response times that include all calls for service, both emergency and non-emergency.

Average Response Time

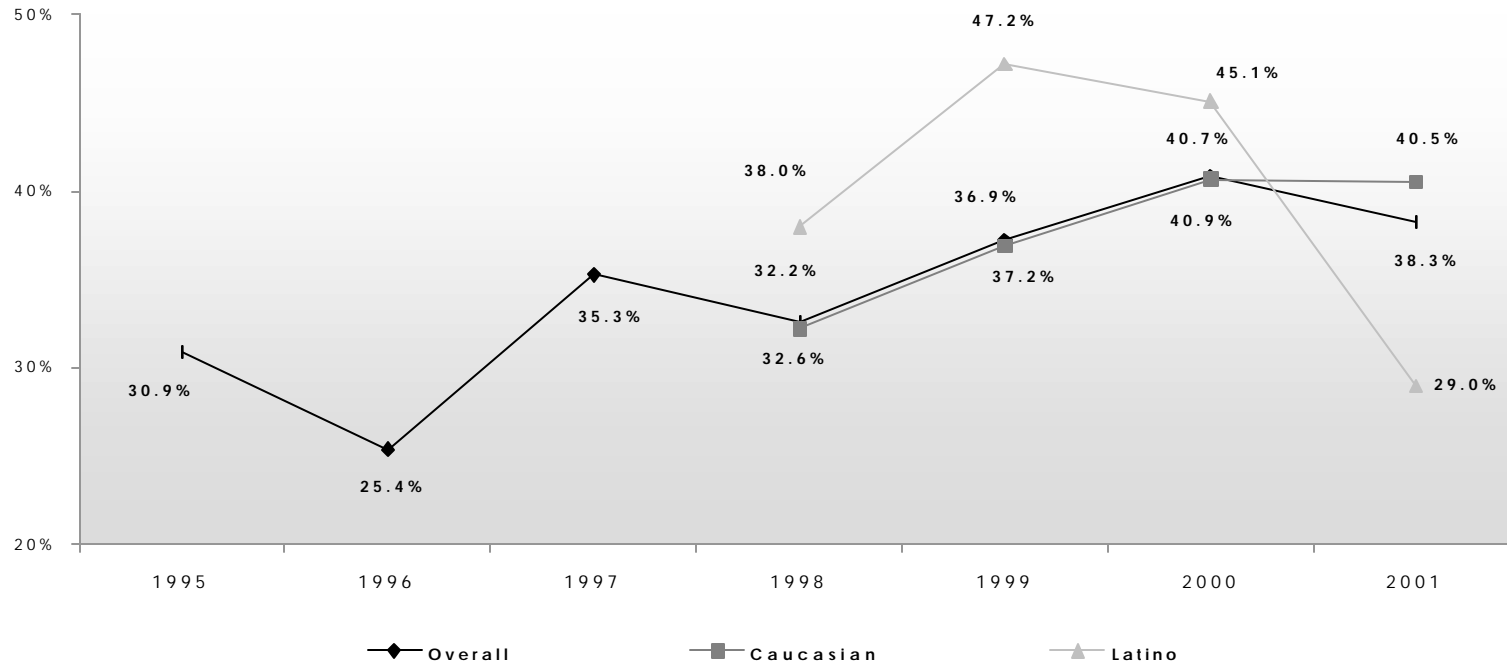
Agency	Priority 1				Priority 2				Priority 3			
	1997	1998	1999	2000	1997	1998	1999	2000	1997	1998	1999	2000
Capitola Police Department	4:07	3:45	4:05	4:13	7:08	6:38	6:26	6:25	12:03	12:18	12:52	14:10
Santa Cruz Police Department	4:49	3:59	4:33	4:54	8:54	7:24	6:58	7:30	14:15	11:54	12:29	13:29
Santa Cruz County Sheriff's Office	12:01	8:41	8:44	8:55	18:34	16:58	14:55	15:22	25:40	25:12	24:21	23:24
Scotts Valley Police Department	3:00	2:50	2:50	3:00	7:00	-	-	-	-	-	-	-
Watsonville Police Department	5:01	3:57	4:11	4:22	10:52	8:57	7:42	7:01	18:21	17:56	17:35	18:33

Source: Santa Cruz Consolidated Emergency Communications Center and Scotts Valley Police Department, 2000.

Response times were calculated by Santa Cruz Consolidated Emergency Communications Center. All Jurisdictions (except Scotts Valley Police Department) use this agency as their dispatching system. **Priority 1** is defined as a call for assistance that involves a person or an accident. **Priority 2** involves property crimes and **Priority 3** calls are informational.

Law Enforcement Effectiveness

How effective do you think law enforcement is in our community? (Respondents answering “very”)



Total respondents	1995	1996	1997	1998	1999	2000	2001
Overall	324	493	507	513	557	658	701
Caucasian	-	-	-	385	425	445	488
Latino	-	-	-	92	89	142	159

Source: Santa Cruz Community Assessment Project, Telephone Survey.

See appendix for results of statistical testing for this question.

QUALITY OF LIFE INDICATOR 81



Law Enforcement Effectiveness



Respondent Profile

Percent of respondents who think law enforcement is “very effective” in their community:

By Ethnicity	1998	1999	2000	*2001	2001 N
Caucasian	32.2	36.9	40.7	40.5	488
Latino	38.0	47.2	45.1	29.0	159

By Region	1998	1999	2000	2001	2001 N
North County	32.9	39.5	38.7	42.1	202
South County	33.5	38.2	43.1	35.0	290
San Lorenzo Valley	29.8	22.0	43.4	34.8	209

By Age	1998	1999	2000	2001	2001 N
18-24	-	40.7	32.6	29.5	76
25-44	-	38.7	43.5	37.0	214
45-64	-	36.2	36.5	38.2	257
65 and older	-	32.5	50.0	45.1	154

By Gender	1998	1999	2000	2001	2001 N
Male	-	37.3	38.0	36.5	351
Female	-	37.2	42.9	40.2	350

By Income	1999	2000	2001	2001 N
Less than \$34,999	38.5	34.7	38.3	256
\$35,000 - \$65,499	32.6	45.3	37.0	170
\$65,500 and greater	40.4	45.8	42.6	209

* Indicates statistically significant survey responses when reporting differences between sub-groups for the 2001 data. Absence of this symbol indicates no statistical significance difference between sub-groups for the 2001 data. For comparisons involving more than 2 groups (region, age and income), footnotes at the bottom of the page indicate which specific comparisons are significant.

Source: Santa Cruz Community Assessment Project, Telephone Survey.

Family Violence - Households Reporting Domestic Violence

This indicator measures the number of calls placed to local law enforcement for assistance in domestic violence disputes.



Number of Calls, Santa Cruz County

Agency	1994	1995	1996	1997	1998	1999	2000	% Change
Capitola Police Department	42	42	55	44	36	30	27	-10.0
Santa Cruz Police Department	198	207	269	167	193	190	160	-15.8
Santa Cruz County Sheriff's Office*	262	244	217	247	206	541	918	69.7
Scotts Valley Police Department	29	44	34	13	19	35	40	14.3
Watsonville Police Department	180	183	238	268	274	244	204	-16.4
County Total **	729	735	834	760	758	1,058	1,374	29.9
Population	237,800	240,000	242,500	245,400	249,000	252,100	255,000	1.2
Domestic Violence Call Rate	3.1	3.1	3.4	3.1	3.0	4.2	5.4	-

Number of Calls, California

	1994	1995	1996	1997	1998	1999	2000	% Change
Number of Calls	250,439	246,315	227,899	220,156	196,832	186,406	196,880	5.6
Population (in thousands)	31,661	31,910	32,223	32,670	33,226	33,766	34,336	1.7
Rate of Domestic Violence Calls	7.9	7.7	7.1	6.7	5.9	5.5	5.7	-

Source: California Criminal Justice Profile, 2000; Department of Finance Population Estimates, 2001.

* In 1999, the Sheriff's Department changed the method of categorizing domestic violence cases to comply with California Penal Code definitions. Cases that would have been classified as assault before 1999 are now being appropriately classified as domestic violence cases.

** The total of all jurisdictions will not equal county total. The county total includes the California Highway Patrol, U.C. Santa Cruz, Santa Cruz Mountains Department of Parks and Recreation and the Union Pacific Railroad.

QUALITY OF LIFE INDICATOR 82

Family Violence - Households Reporting Domestic Violence

Number of Cases with Weapons, Santa Cruz County

Agency	1994	1995	1996	1997	1998	1999	2000	% Change
Capitola Police Department	37	26	43	31	26	22	24	9.1
Santa Cruz Police Department	184	189	251	156	177	178	149	-16.3
Santa Cruz County Sheriff's Office*	262	244	217	247	206	411	814	98.1
Scotts Valley Police Department	23	40	19	11	17	25	28	12.0
Watsonville Police Department	158	137	159	175	180	108	187	73.1
County Total **	678	647	699	629	621	755	1,213	60.7
Population	237,800	240,000	242,500	245,400	249,000	252,100	255,000	1.2
Domestic Violence Cases with Weapons Rate	2.9	2.7	2.9	2.6	2.5	3.0	4.8	-

Number of Cases with Weapons, California

	1994	1995	1996	1997	1998	1999	2000	% Change
Cases with Weapons	182,240	174,299	159,075	155,650	136,658	127,795	135,156	5.8
Population (in thousands)	31,661	31,910	32,223	32,670	33,226	33,766	34,336	1.7
Rate of Domestic Violence Cases with Weapons	5.8	5.5	4.9	4.8	4.1	3.8	3.9	-

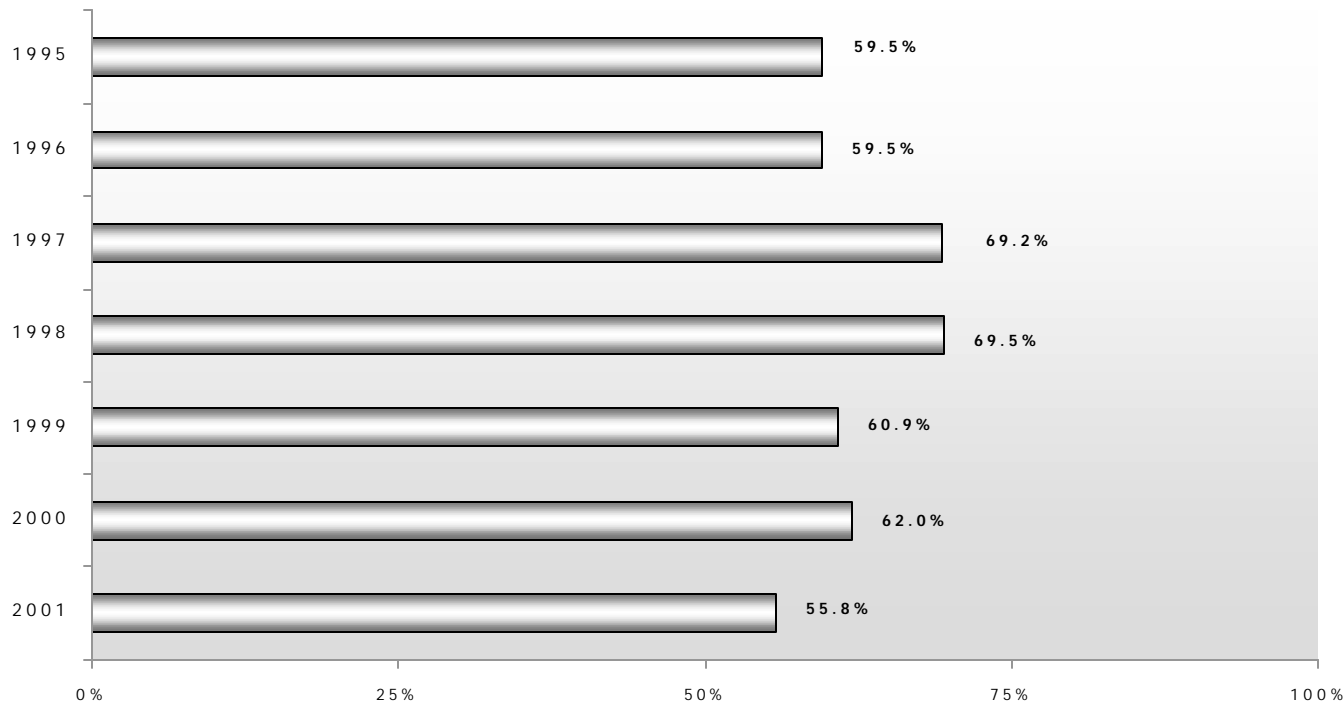
Source: California Criminal Justice Profile, 2000; Department of Finance Population Estimates, 2001.

* In 1999, the Sheriff's Department changed the method of categorizing domestic violence cases to comply with California Penal Code definitions. Cases that would have been classified as assault before 1999 are now being appropriately classified as domestic violence cases.

** The total of all jurisdictions will not equal county total. The county total includes the California Highway Patrol, U.C. Santa Cruz, Santa Cruz Mountains Department of Parks and Recreation and the Union Pacific Railroad.

Family Violence

*How concerned are you about family violence (includes domestic violence, child abuse, and senior abuse)?
(Respondents answering “very concerned”)*



Total respondents	1995	1996	1997	1998	1999	2000	2001
Overall	343	479	490	508	558	658	698

Source: Santa Cruz County Community Assessment Project, Telephone Survey.

**See appendix for results of statistical testing for this question.*

QUALITY OF LIFE INDICATOR 82

 **Family Violence**

 **Respondent Profile**

Percent of respondents who are “very concerned” with family violence:

By Ethnicity	1998	1999	2000	*2001	2001 N
Caucasian	69.1	61.2	61.1	50.2	489
Latino	72.2	68.5	67.6	68.8	156

By Gender	1998	1999	2000	*2001	2001 N
Male	-	54.2	50.2	50.6	349
Female	-	64.4	70.4	60.9	349

By Region	1998	1999	2000	2001	2001 N
North County	72.2	63.1	61.0	52.2	203
South County	72.7	63.0	63.6	61.9	284
San Lorenzo Valley	56.0	52.5	63.7	50.0	209

By Income	1999	2000	*2001	2001 N
Less than \$34,999	74.6	66.4	66.2	252
\$35,000 - \$65,499	56.7	56.9	55.5	173
\$65,500 and greater	52.0	64.3	43.9	206

By Age	1998	1999	2000	*2001	2001 N
18-24	-	59.8	56.5	70.5	73
25-44	-	62.0	63.7	48.7	216
45-64	-	64.6	64.1	57.5	255
65 and older	-	52.5	58.5	56.4	153

* Indicates statistically significant survey responses when reporting differences between sub-groups for the 2001 data. Absence of this symbol indicates no statistical significance difference between sub-groups for the 2001 data. For comparisons involving more than 2 groups (region, age and income), footnotes at the bottom of the page indicate which specific comparisons are significant.

Source: Santa Cruz Community Assessment Project, Telephone Survey.

Significance Testing

Age: 18-24 years significantly higher than 25-44 years

Income: \$34,999 or less significantly higher than \$65,500 or more

Child Witnesses to Domestic Violence

Exposure to domestic violence is linked to increased aggressiveness, emotional problems such as depression and anxiety, lower levels of social competence and poorer academic performance in children. * For these reasons, many therapists view exposure to domestic violence as a form of child abuse.

Prevalence of Child Witnesses of Domestic Violence Per 1,000 Children

	1994	1995	1996	1997	1998	1999	2000
Domestic Violence Calls for Assistance	729	735	834	760	758	1,058	1,374
Calls with child witnesses	277	279	317	289	288	402	522
Number of child witnesses	554	559	634	578	576	804	1,044
Population 0-17	60,202	61,152	61,965	62,984	63,948	64,855	65,771
Rate per 1,000 children 0-17	9.2	9.1	10.2	9.2	9.0	12.4	15.9

Source: Family Violence Response Team; Community Response Team, 2000; California Department of Justice, Criminal Justice Profile, 2000; Department of Finance Population Estimates, 2001.

Note: The Family Violence Response Team (FVRT) in South County and the Community Response Team (CRT) in North County both record whether or not children are present in the home when law enforcement officials respond to domestic violence calls. Because FVRT and CRT data are not available for every year or every month over the last five years, it was necessary to use extrapolation methods to determine a general multiplier for estimating presence of children witnessing domestic violence. For instance, FVRT cases with children in 1998 (110) were presented as a percent of the total cases of calls for assistance (274 or 40%) in the same geographical area. Next, a similar process was used with CRT data to determine the percent of cases in which children were present in the home in the jurisdictions of the Santa Cruz County Sheriff's Office (37%) and the police departments of Capitola (32%), Santa Cruz (34%), and Scotts Valley (48%). On an average across the five jurisdictions, 38.2% of domestic violence calls for assistance had children in the home. Next, a conservative assumption was made that there were an average of two children per household throughout the County. The 2001 Number of cases estimated to have children in the home (using the multiplier of 38.2%) was then multiplied by two to produce an estimate of the number of children witnessing domestic violence.

* The David and Lucile Packard Foundation, The Future of Children— "Domestic Violence and Children", Volume 9, Number 3, Winter 1999.

QUALITY OF LIFE INDICATOR 84

Child Abuse

Definition of Relevant Terms:

Child: Individual 17 years or less.

Sexual Abuse: The victimization of a child through sexual activities. These activities include, but are not limited to: molestation, indecent exposure, fondling, rape, and incest.

Physical Abuse: A bodily injury which has been or is being inflicted by other than accidental means on a child by the child's caretaker. Physical abuse includes, but is not limited to: willful cruelty, unjustifiable punishment, or corporal punishment / injury to a child.

Severe Neglect: The negligent failure of a caretaker to protect a child from severe malnutrition, or medically diagnosed non-organic failure to thrive. Severe neglect also includes situations where a caretaker willingly causes or allows the child to be placed in a situation where his / her health is endangered. This includes, but is not limited to: intentional failure to provide necessary medical care, adequate food, clothing, or shelter.

General Neglect: The negligent failure of a caretaker to provide adequate food, clothing, shelter, or supervision where no physical injury to the child has occurred.

Source: Health and Welfare Agency Annual Statistical Report, 2000.

Emotional Abuse: Non-physical mistreatment, the results of which may be characterized by disturbed behavior on the part of the child such as severe withdrawal, regression, bizarre behavior, hyperactivity, or dangerous behavior. Such behavior, in and of itself, is not deemed to be evidence of emotional abuse. Emotional abuse includes, but is not limited to: willfully causing or permitting any child to suffer, inflicting mental suffering, or endangering a child's emotional well being.

Exploitation: The act of forcing or coercing a child into performing activities for the benefit of the caretaker which are beyond the child's capabilities or which are illegal or degrading. This term also includes sexual exploitation.

Caretaker Absence or Incapacity: The absence of the caretaker due to hospitalization, incarceration or death; incapacity of the caretaker to provide adequate care for the child due to physical or emotional illness, disabling condition, or compulsive use of alcohol or narcotics.

Child Abuse

Emergency Response Child Abuse Referrals, Santa Cruz County

Type of Abuse	1994	1995	1996	1997*	1998	1999*	2000*
Sexual Abuse	1,031	1,061	933	343	390	471	293
Physical Abuse	1,787	1,808	1,785	613	686	1,191	825
Severe Neglect	260	296	334	95	72	79	65
General Neglect	1,506	1,766	1,595	583	852	2,259	1,102
Emotional Abuse	462	531	524	298	488	1,450	599
Exploitation	16	21	37	0	16	17	11
Caretaker Absence or Incapacity	484	467	444	400	119	391	235
At Risk – Sibling Abused	-	-	-	-	-	-	220
Substantial Risk	-	-	-	-	-	-	9
County Total	5,546	5,950	5,652	2,332	2,623	5,858	2,661

Source: Health and Welfare Agency Annual Statistical Report, 2000.

Substantiated Child Abuse Cases

	1998		1999		2000	
	Children with Substantiated Cases	Rate per 1,000 Children	Children with Substantiated Cases	Rate per 1,000 Children	Children with Substantiated Cases	Rate per 1,000 Children
Santa Cruz County	843	13.2	901	13.9	873	13.3
California	110,545	11.7	114,803	12.0	113,749	11.6

Source: Center for Social Services Research, University of California at Berkeley, 2000.

* In 1997, a new reporting system was implemented which counts cases of multiple forms of abuse committed against a single individual as one referral instead of multiple referrals. Thus, the decline in figures for 1997 does not reflect a decline in the number of referrals. Effective fiscal year 1998/99, the referrals were no longer counted by child, but by family.

* In 1999, a new reporting system was implemented which counts all children in the household at risk of abuse, as opposed to merely the child identified in the report. Therefore, the increase in figures for 1999 does not reflect an increase in the number of referrals.

* In 2000, a new reporting system was implemented which counts referrals by family, not by individual children. For example, one referral could have three children with six separate allegations. Due to referrals with multiple children and / or allegations, the totals for referrals and children are not a sum of the parts.

QUALITY OF LIFE INDICATOR 85

Elder Abuse

Reported cases of Abuse

Reported Cases	1994	1995	1996	1997	1998	1999*	2000*	% Change
Cases of elders abused by another	136	164	157	170	200	211	167	-20.9
Cases of elder self-neglect	60	96	94	67	76	121	124	2.5
County Total	196	260	251	237	276	332	291	-12.3
Population 65 or older	26,551	26,785	27,081	27,281	27,529	27,762	28,109	1.2
Elder abuse reported case rate per 1,000	7.4	9.7	9.3	8.7	10.0	12.0	10.4	-

Source: Health and Welfare Agency Annual Statistical Report, 2000; Department of Finance Population Estimates, 2001.

** Figures prior to September 1999 include the number of cases investigated in that particular year, in addition to the number of cases reported and not investigated after an evaluation by a supervisor. In September 1999, the state report form and methodology changed. This new system only tracks reports investigated which are either confirmed or inconclusive. Therefore, the decreased elder abuse report rate above is not necessarily reflective of a decrease in elder abuse. In fact, if a change in reporting had not occurred, the rate would have increased.*

Foster Care Placements

Children that are reported to be in at-risk environments often are placed in foster care. When possible, children are kept in the home but placed under supervision. Children experiencing serious cases of abuse and neglect are placed in out-of-home foster care, until the family can be reunified or other actions are taken.

Rate of Out-of-Home Placements in Foster Care

	July 1995	July 1996	July 1997	July 1998	July 1999	July 2000	% Change
Number of Children in Out-of-Home Placements	-	376	413	398	375	411	9.6
Population 0-17	61,152	61,965	62,984	63,948	64,855	65,771	1.4
Rate per 1,000 — Santa Cruz County	5.5	6.1	6.6	6.2	5.8	6.2	-
Rate per 1,000 — California	9.5	10.1	11.3	10.9	11.3	11.0	-

Source: University of California at Berkeley, Center for Social Services Research, 2000.

QUALITY OF LIFE INDICATOR 87

Driving Under the Influence – Felony

Driving under the influence arrest data is a gauge of law enforcement's effectiveness in stopping DUI crimes and preventing possible injury or fatalities.

Adult and Juvenile* Felony DUI Arrests, Santa Cruz County

Ethnicity	1994	1995	1996	1997	1998	1999	2000	% Change
Caucasian	26	17	21	24	22	38	35	-7.9
Hispanic	17	13	18	17	12	13	15	15.4
Other	0	0	0	1	0	1	1	0.0
African – American	0	0	0	1	0	1	1	0.0
County Total	43	30	39	43	34	53	52	-1.9
Population 16 and older	184,105	185,903	187,513	190,451	193,833	197,508	201,232	1.9
Felony DUI Rate per 10,000	2.3	1.6	2.1	2.3	1.8	2.7	2.6	-

Adult Felony DUI Arrests, California

Ethnicity	1994	1995	1996	1997	1998	1999	2000	% Change
Caucasian	3,061	2,832	2,636	2,256	2,222	2,196	2,243	2.1
Hispanic	3,470	2,917	2,834	2,436	2,259	2,127	2,343	10.2
Other	589	342	348	408	420	445	398	10.6
African – American	357	462	438	407	390	420	450	7.1
County Total	7,477	6,553	6,256	5,507	5,291	5,188	5,434	4.7
Population 18 and older	23,027,636	23,158,473	23,340,409	23,701,148	24,075,776	24,480,601	24,882,708	1.6
Felony DUI Rate per 10,000	3.2	2.8	2.7	2.3	2.2	2.1	2.2	-

Source: California Criminal Justice Profile, 2000; Department of Finance Population Estimates, 2001.

* In 1994, there were no juvenile felony DUI arrests in Santa Cruz County. In 1995, there were two Caucasian juvenile felony arrests. In 1996, there was one Hispanic juvenile DUI arrest, while in 1997 there were two Caucasian juvenile felony DUI arrests. There were no juvenile felony DUI arrests in 1998 or 1999. In 2000, there was one juvenile felony arrest with the ethnicity identified as "other".

Driving Under the Influence – Misdemeanor

Adult Misdemeanor DUI Arrests, Santa Cruz County

Ethnicity	1994	1995	1996	1997	1998	1999	2000	% Change
Caucasian	1,413	1,309	1,553	1,463	1,379	1,390	1,142	-17.8
Hispanic	1,067	995	929	856	648	530	565	6.6
Other	32	40	31	50	39	31	53	71.0
African American	57	33	28	42	24	28	36	28.6
County Total	2,569	2,377	2,541	2,411	2,090	1,979	1,796	-9.2
Adult Population (18+)	178,617	180,358	181,692	184,268	187,527	190,970	194,477	1.8
Adult Misdemeanor DUI Rate per 10,000	143.8	131.8	139.9	130.8	111.5	103.6	92.4	-

Adult Misdemeanor DUI Arrests, California

Ethnicity	1994	1995	1996	1997	1998	1999	2000	% Change
Caucasian	82,975	82,212	82,969	77,566	77,553	78,354	74,179	-5.3
Hispanic	92,562	87,639	88,722	82,075	79,440	77,639	78,900	1.6
Other	13,702	10,398	11,138	13,938	13,768	12,588	11,965	-4.9
African American	10,346	12,293	12,887	12,451	12,275	14,762	11,930	-19.2
State Total	199,585	192,542	195,716	186,028	183,036	183,343	176,974	-3.5
Adult Population (18+)	23,027,636	23,158,473	23,340,409	23,701,148	24,075,776	24,480,601	24,882,708	1.6
Adult Misdemeanor DUI Rate per 10,000	86.7	83.1	83.9	78.5	76.0	74.9	71.1	-

Source: California Criminal Justice Profile, 2000; Department of Finance Population Estimates, 2001.

QUALITY OF LIFE INDICATOR 87

Driving Under the Influence – Misdemeanor

Juvenile Misdemeanor DUI Arrests, Santa Cruz County

Ethnicity	1994	1995	1996	1997	1998	1999	2000	% Change
Caucasian	18	19	16	21	23	35	16	-54.3
Hispanic	15	13	9	13	14	6	11	83.3
Other	0	2	1	0	3	1	1	0.0
African American	1	1	1	0	2	1	0	-100.0
County Total	34	35	27	34	42	43	28	-34.9
Juvenile Population 16+	5,488	5,545	5,821	6,183	6,306	6,538	6,755	3.3
Juvenile Misdemeanor DUI Rate per 10,000	62.0	63.1	46.4	55.0	66.6	65.8	41.5	-

Juvenile Misdemeanor DUI Arrests, California

Ethnicity	1994	1995	1996	1997	1998	1999	2000	% Change
Caucasian	750	832	960	818	875	892	778	-12.8
Hispanic	793	619	629	639	615	621	556	-10.5
Other	82	53	69	101	136	40	81	102.5
African American	65	66	56	51	57	121	42	-65.3
State Total	1,690	1,570	1,714	1,609	1,683	1,674	1,457	-13.0
Juvenile Population 16+	789,082	801,976	839,198	894,117	899,563	912,654	942,224	3.2
Juvenile Misdemeanor DUI Rate per 10,000	21.4	19.6	20.4	18.0	18.7	18.3	15.5	-

Source: California Criminal Justice Profile, 2000; Department of Finance Population Estimates, 2001.

Juvenile Drug Arrests

Drug arrest data is a useful tool in the analysis of social conditions in a region and a resource for developing strategies to address issues involving drug-related crime and other social problems.

Juvenile Felony Drug Arrests, Santa Cruz County

Drug	1995	1996	1997	1998	1999	2000	% Change
Narcotics	44	42	36	48	31	26	-16.1
Marijuana	17	25	25	30	26	23	-11.5
Dangerous Drugs	23	18	15	11	19	16	-15.8
Other Drug Violations	3	2	1	1	0	0	0.0
County Total	87	87	77	90	76	65	-14.5

Juvenile Misdemeanor Drug Arrests, Santa Cruz County

Drug	1995	1996	1997	1998	1999	2000	% Change
Marijuana	126	109	103	142	123	116	-5.7
Other Drug Violations	46	52	96	90	81	52	-35.8
County Total	172	161	199	232	204	168	-17.6

Source: *California Criminal Justice Profile, 2000.*

QUALITY OF LIFE INDICATOR 89

Adult Drug Arrests

Adult Felony Drug Arrests, Santa Cruz County

Drug	1995	1996	1997	1998	1999	2000	% Change
Narcotics	652	664	712	612	537	504	-6.1
Marijuana	128	152	154	155	137	109	-20.4
Dangerous Drugs	176	174	325	274	258	225	-12.8
Other Drug Violations	21	21	22	30	18	24	33.3
County Total	977	1,011	1,213	1,071	950	862	-9.3

Adult Misdemeanor Drug Arrests, Santa Cruz County

Drug	1995	1996	1997	1998	1999	2000	% Change
Marijuana	198	295	284	319	390	367	-5.9
Other Drug Violations	506	668	760	759	798	787	-1.4
Total Arrests	704	963	1,044	1,078	1,188	1,154	-2.9

Source: California Criminal Justice Profile, 2000.

