

QUALITY OF LIFE INDICATOR 59

Nutritional Status by Selected Ethnicity

Low hemoglobin values (anemia) frequently indicate poor nutritional status, as do low or high weight for height measurements.

Percent of Patients 0-17 years with Low Hemoglobin (< 5th Percentile)

	1995	1996	1997	1998	1999
Caucasian	10.7	14.7	15.5	14.4	15.7
Latino	13.2	14.5	14.2	13.4	13.7
All other	*	*	*	16.0	*
Not specified	16.8	16.7	23.5	13.0	N/A
County Total	14.2	15.0	16.6	13.5	13.7
State Total	16.5	15.6	15.0	14.0	N/A
Number of Persons Examined	3,382	2,568	2,810	4,180	5,296

Percent of Patients 0-17 with High Weight/Height (> 95th Percentile)

	1995	1996	1997	1998	1999
Caucasian	9.5	8.8	8.8	8.4	9.4
Latino	13.9	15.3	16.4	15.4	15.2
All other	3.7	10.7	13.8	11.1	10.4
Not specified	12.6	11.4	13.1	16.0	N/A
County Total	12.8	14.0	15.1	14.2	14.1
State Total	13.3	13.1	13.4	14.1	N/A
Number of Persons Examined	10,970	6,336	6,304	13,516	11,541

Percent of Patients 0-17 years with Low Weight/Height (< 5th Percentile)

	1995	1996	1997	1998	1999
Caucasian	3.9	2.7	4.1	3.4	4.8
Latino	2.1	1.5	1.6	1.5	1.8
All other	2.9	3.3	*	2.7	4.1
Not specified	2.6	2.1	2.4	1.4	N/A
County Total	2.5	1.7	2.0	1.8	2.3
State Total	2.5	2.5	2.5	2.3	N/A
Number of Persons Examined	10,970	6,336	6,324	13,516	11,541

Source: *Pediatric Nutrition Surveillance*, Summary of Indicators by Age and Ethnic Groups, 2001.

* Value does not meet standards of reliability or precision.

Unintentional Injuries

The injury hospitalization rate measures the number of discharges from acute care hospital facilities for unintentional injuries among children 0-20, for every 1,000 children of similar ages within the general population.

Unintentional Non-fatal Injuries, By Age

Age Group	1994	1995	1996	1997	1998	1999	% Change
Under 1	4	7	3	4	2	4	100.0
1 to 4	30	21	35	40	26	33	26.9
5 to 12	38	36	53	45	38	48	26.3
13 to 15	16	18	22	29	25	19	-24.0
16 to 20	54	82	61	54	47	67	42.6
Total Unintentional Injuries 0-20	142	164	174	172	138	171	23.9
Population 0-20	69,870	70,973	71,938	73,185	74,538	75,909	1.8
Rate per 1,000 — County	2.0	2.3	2.4	2.4	1.9	2.3	-
Rate per 1,000 — State	3.2	3.1	2.9	2.8	2.8	7.1	-

Unintentional Non-fatal Injuries for Persons Ages 0-20, By Selected Cause

Cause of Injury	1994	1995	1996	1997	1998	1999	% Change
Falls	47	47	56	60	51	60	17.7
Motor Vehicle Traffic	49	51	46	38	30	33	13.3
Stuck by Object	11	11	9	14	15	13	-13.3
Poisoning	6	8	16	11	10	12	20.0
Gunshot	0	3	2	0	1	1	0.0

Source: California Office of Statewide Health Planning and Development, Hospital Discharge Dataset, 2001.

QUALITY OF LIFE INDICATOR 61

Intentional Injuries

Intentional Non-fatal Injuries, By Age

Age Group	1994	1995	1996	1997	1998	1999	% Change
Under 1	0	1	0	1	0	0	-
1 to 4	1	1	1	0	0	1	-
5 to 12	0	2	1	2	0	0	-
13 to 15	13	10	5	13	9	7	-22.2
16 to 20	31	33	30	31	28	24	-14.3
Total Intentional Injuries 0-20	45	47	37	47	37	32	-13.5
Population 0-20	69,870	70,973	71,938	73,185	74,538	75,909	1.8
Rate per 1,000 — County	0.6	0.7	0.5	0.6	0.5	0.4	-
Rate per 1,000 — State	0.9	0.8	0.7	0.7	0.6	0.6	-

Intentional Non-fatal Injuries for Persons Ages 0-20, By Selected Cause

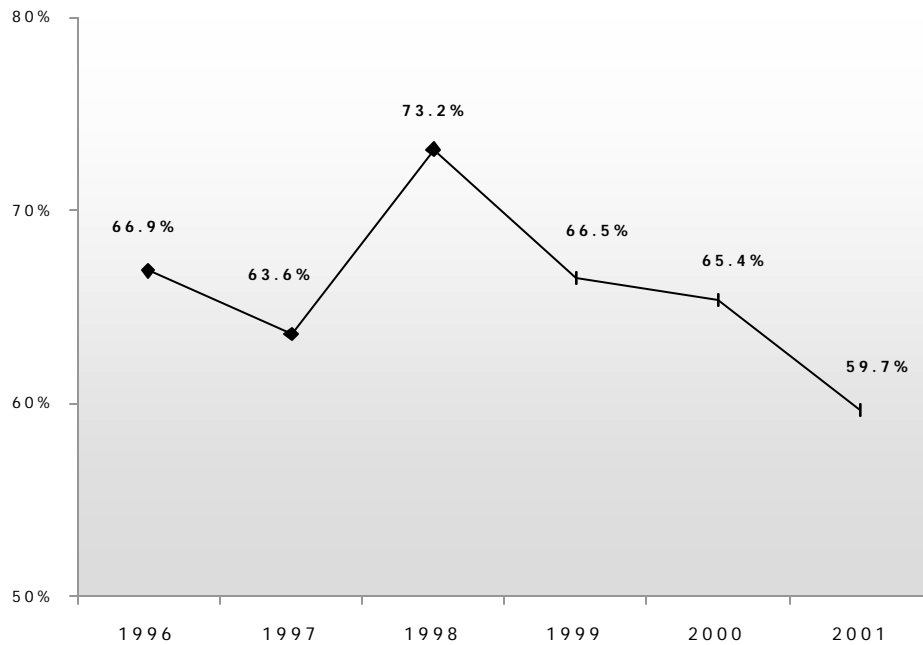
Cause of Injury	1994	1995	1996	1997	1998	1999	% Change
Intentional — Self Inflicted	18	23	19	24	27	25	-7.4
Poisoning	15	20	17	21	24	20	-16.7
Gunshot	0	0	0	0	0	0	-
Intentional — Assault	27	24	18	23	10	7	-30.0
Cut/ Pierce	14	6	7	14	8	1	-87.5
Gunshot	9	10	5	4	2	1	-50.0
Total	45	47	37	47	37	32	-13.5

Source: California Office of Statewide Health Planning and Development, Hospital Discharge Dataset, 2001.

Alcohol Use

This indicator measures reported use of alcohol as well as the availability of alcohol in the community (see following page).

How many times a week do you drink more than 2 alcoholic drinks in one sitting? (Respondents answering “never”)



How many times a week do you drink more than 2 alcoholic drinks in one sitting?

Number of Times	1996	1997	1998	1999	2000	2001
Never	66.9	63.6	73.2	66.5	65.4	59.7
1	14.7	15.9	12.8	9.5	16.6	16.1
2	7.2	8.5	6.2	6.8	10.5	8.5
3	3.9	3.7	2.7	5.7	3.8	5.7
4	2.0	2.0	1.2	3.4	1.4	1.9
5	0.8	2.0	1.0	1.8	0.9	3.6
6	0.4	0.0	0.0	1.3	0.2	1.1
7	4.1	4.3	2.9	5.0	1.2	2.9
Total Respondents	489	508	514	558	656	702

Source: Santa Cruz County Community Assessment Project, Telephone Survey.

**See appendix for results of statistical testing for this question.*

QUALITY OF LIFE INDICATOR 63

Availability of Alcohol

This chart compares the number and rate of retail alcohol outlets in the county versus the state. Retail alcohol outlets include off-sale establishments, where alcohol is sold for consumption off premises, such as supermarkets and liquor stores, as well as places where alcohol is consumed on the premises (bars, restaurants, etc.).

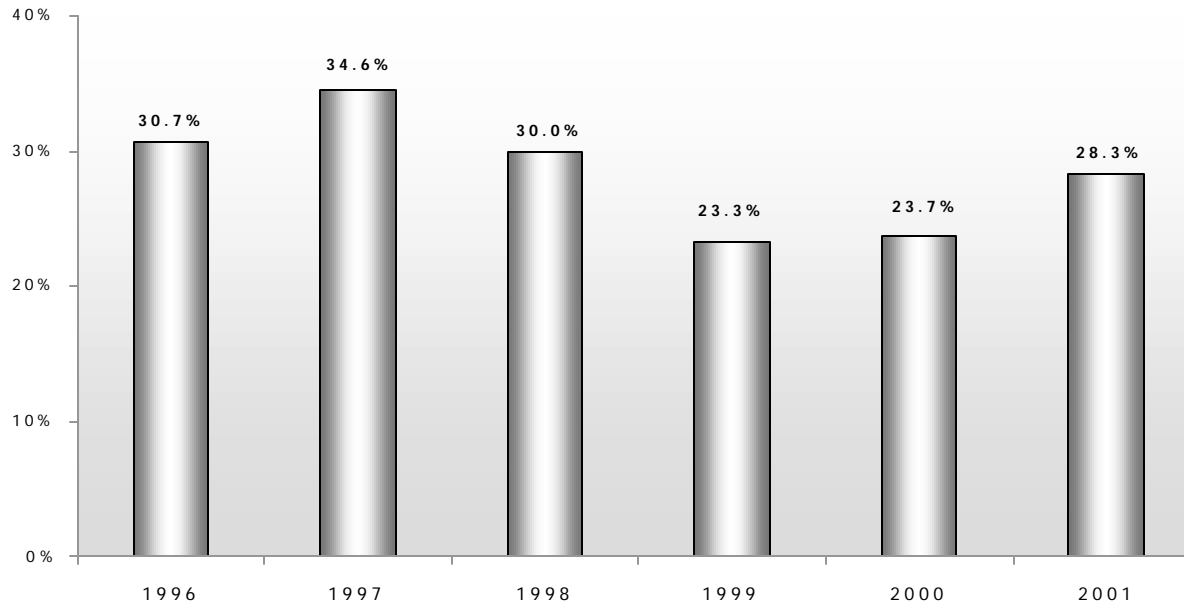
Number of Alcohol Outlets Per 1,000 People

	1995	1996	1997	1998	1999	2000	% Change
Retail Alcohol Outlets — County	679	663	668	657	638	641	0.5
Retail Alcohol Outlets — State	N / A	66,678	66,459	66,295	66,268	66,436	0.3
Outlets per 1,000 People — County	2.8	2.7	2.7	2.6	2.5	2.5	0.0
Outlets per 1,000 People — State	2.1	2.1	2.0	2.0	2.0	1.9	-0.1

Source: Santa Cruz Alcohol and Drug Programs, California Department of Alcohol Beverage Control, 2000.

Marijuana Use - Personal Standards

How acceptable do you find the use of marijuana for recreational or non-medicinal use? (Respondents answering “acceptable”)



Total respondents	1996	1997	1998	1999	2000	2001
Overall	475	489	497	558	657	700

Source: Santa Cruz County Community Assessment Project, Telephone Survey.

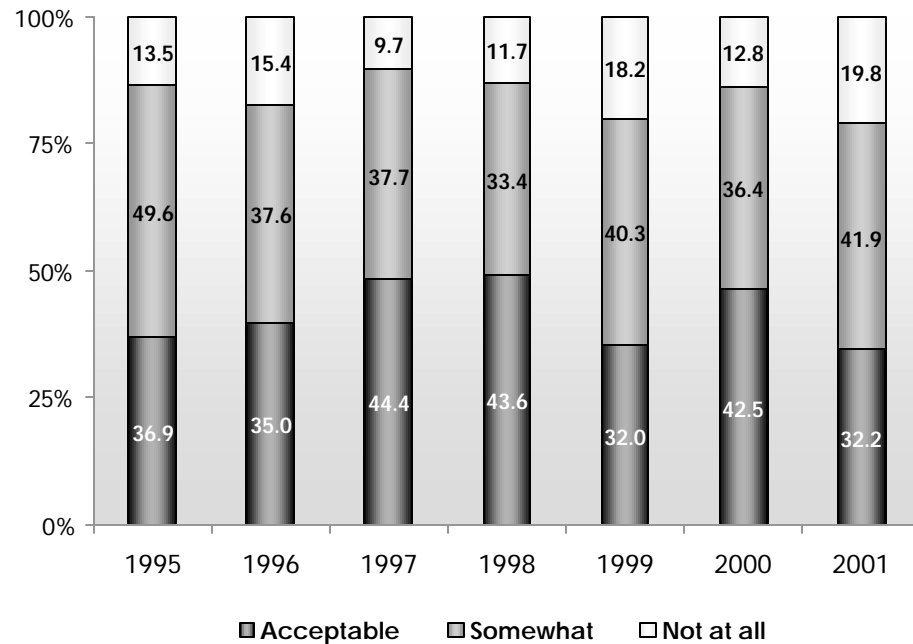
Question was reworded in 1999 to include “recreational or non-medicinal.”

**See appendix for results of statistical testing for this question.*

QUALITY OF LIFE INDICATOR 64

☎ Marijuana Use -- Community Standards

How acceptable do you think our community finds the use of marijuana for recreational or non-medicinal use?



Total respondents	1995	1996	1997	1998	1999	2000	2001
Overall	282	492	504	512	559	657	702

*Due to low numbers the “don’t know” response is not included in the graph.
Question was reworded in 1999 to include “recreational or non- medicinal.”*

*✎ Why do you think our community feels this way?
(Selected responses)*

Respondents who said that they think that our community finds the use of marijuana for rec. or non-medicinal use to be: Acceptable	2000	2001
Liberal / Tolerant	45.2	46.0
Acceptable	9.7	14.4
Many people use it	29.0	14.1
Hippies	10.4	13.6

Year 2001: 224 respondents offering 278 responses.

Respondents who said that they think that our community finds the use of marijuana for rec. or non-medicinal use to be: Somewhat acceptable	2000	2001
Liberal / Tolerant	42.4	32.7
Many people use it	23.5	16.0
OK for medical use	8.0	9.8
Acceptable	5.0	9.4

Year 2001: 287 respondents offering 349 responses.

Respondents who said that they think that our community finds the use of marijuana for rec. or non-medicinal use to be: Not at all acceptable	2000	2001
Illegal / Bad for health	12.2	41.4
Not acceptable	54.9	20.3
Addicted to it	4.9	9.1
Should be legal	8.5	8.8

Year 2001: 132 respondents offering 164 responses.

Source: Santa Cruz County Community Assessment Project, Telephone Survey.

**See appendix for results of statistical testing for this question.*

Tobacco Use – Students

This table represents the self-reported use of tobacco by students.

Student Tobacco Use, Santa Cruz County

Frequency of Use	1994	1996	1998	2000
Ever Used*				
7 th Grade	–	–	–	19.0
9 th Grade	65.0	55.0	51.0	38.0
11 th Grade	64.0	66.0	59.0	55.0
Used in Last 30 Days*				
7 th Grade	–	–	–	6.0
9 th Grade	–	–	24.0	13.0
11 th Grade	–	–	27.0	19.0

Source: *The American Drug and Alcohol Survey 1994-1998, California Healthy Kids Survey, 2001.*

Santa Cruz County - Student *Smokeless* Tobacco Use in the Last 30 Days

	1998	2000
8 th Grade	2.0	NA
9 th Grade	2.0	3.0
11 th Grade	4.0	3.0

Source: *California Healthy Kids Survey, 2001*

* The question changed in 2000 from “used cigarettes” to “tried even one or two puffs of a cigarette”.

State Comparison - Student Tobacco Use in the Last 30 Days

	1994	1996	1998	2000**
7 th Grade	17.7	15.1	13.4	7.0
9 th Grade	30.2	28.2	29.0	13.0
11 th Grade	29.1	30.5	29.3	21.0

Source: *California Department of Justice, Seventh Biennial California Student Substance Abuse Survey, 2000.*

National Comparison - Student Tobacco Use in the Last 30 Days

	1994	1996	1998	2000
8 th Grade	18.6	21.0	19.1	14.6
10 th Grade	25.4	30.4	27.6	23.9
12 th Grade	31.2	34.0	35.1	31.4

Source: *University of Michigan, Institute for Social Research, Monitoring the Future, 2000.*

** Part of the decline in smoking may be attributable to a change in question wording.

QUALITY OF LIFE INDICATOR 66

Tobacco Use - Adults

Adult Tobacco Use, Santa Cruz Tri-County Area,*

	Current Smoker		Former Smoker		Quit Ratio	
	1990	1996	1990	1996	1990	1996
Tri-County Area	19.0	16.5	11.1	11.6	37.0	41.1
State	22.2	18.1	9.8	10.3	30.6	36.4

Source: Department of Health Services, *Tobacco Control in California: Who's Winning the War?* 1998.

All figures are within 95% confidence intervals. Former smoker and quit ratios are within the last five years. The sample size for the Santa Cruz Tri-County Area was 3,249 in 1990 and 3,645 in 1996.

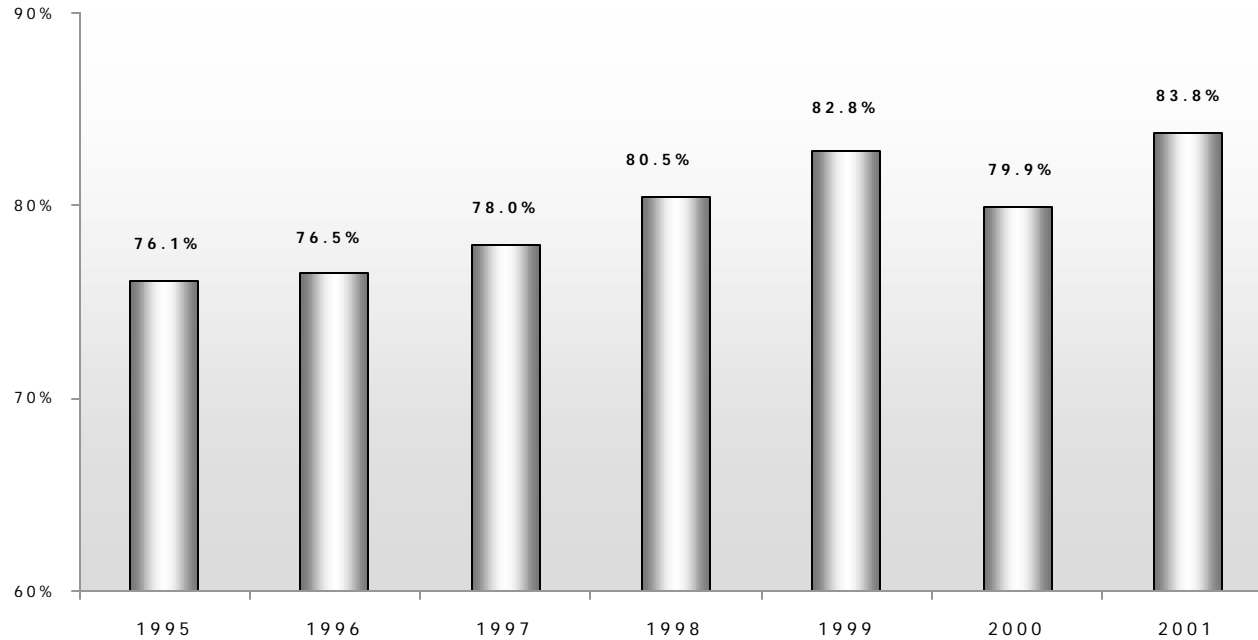
In California, the sample size was 65,139 in 1990, and 78,337 in 1996.

* Santa Cruz Tri-County area includes Monterey, San Benito, and Santa Cruz Counties.

 **New data not available**

Tobacco Use

How often do you use tobacco? (Respondents answering “never”)



Total respondents	1995	1996	1997	1998	1999	2000	2001
Overall	305	502	510	513	557	657	705

Source: Santa Cruz County Community Assessment Project, Telephone Survey.

**See appendix for results of statistical testing for this question.*

QUALITY OF LIFE INDICATOR 67



Current Substance Use by Students

This table represents the self-reported drug and alcohol use among youth in Santa Cruz County, as well as statewide and national comparisons.

Santa Cruz County, by percent

Use in Last 30 days	Grade	1993-1994	1995-1996	1998-1999	2000-2001
Alcohol***	7 th Grade	N/A	N/A	N/A	18.0
	9 th Grade	51.0	42.0	38.0	39.0
	11 th Grade	55.0	53.0	51.0	51.0
Marijuana	7 th Grade	N/A	N/A	N/A	7.0
	9 th Grade	35.0	30.0	25.0	22.0
	11 th Grade	40.0	35.0	34.0	32.0
Cocaine	7 th Grade	N/A	N/A	N/A	N/A
	9 th Grade	3.0	3.0	3.0	4.0
	11 th Grade	4.0	6.0	5.0	6.0
Stimulants*	7 th Grade	N/A	N/A	N/A	N/A
	9 th Grade	3.0	3.0	4.0	N/A
	11 th Grade	3.0	4.0	3.0	N/A
Inhalants	7 th Grade	N/A	N/A	N/A	4.0
	9 th Grade	6.0	4.0	5.0	5.0
	11 th Grade	3.0	2.0	1.0	4.0
Hallucinogens**	7 th Grade	N/A	N/A	N/A	N/A
	9 th Grade	10.0	6.0	5.0	4.0
	11 th Grade	10.0	8.0	4.0	5.0
Heroin	7 th Grade	N/A	N/A	N/A	N/A
	9 th Grade	N/A	1.0	2.0	N/A
	11 th Grade	N/A	2.0	1.0	N/A

Source: The American Drug and Alcohol Survey, 1999. California Healthy Kids Survey, 2000

* Includes amphetamines, methamphetamines

** Includes PCP

California, by percent

Use in Last 30 Days	Grade	1993-1994	1995-1996	1998-1999	2000-2001
Alcohol	7 th Grade	27.8	23.2	21.7	16.0
	9 th Grade	43.5	39.2	37.5	29.0
	11 th Grade	50.1	47.7	46.9	44.0
Marijuana	7 th Grade	11.1	6.2	7.5	5.0
	9 th Grade	22.7	23.6	18.1	13.0
	11 th Grade	25.6	25.9	25.7	24.0
Cocaine/ Crack	7 th Grade	6.0	0.9	2.0	N/A
	9 th Grade	5.5	2.6	N/A	1.0
	11 th Grade	3.2	3.6	N/A	4.0
Amphetamines	7 th Grade	6.1	0.7	1.7	N/A
	9 th Grade	6.4	3.2	3.4	N/A
	11 th Grade	5.8	4.5	5.9	N/A
Inhalants	7 th Grade	13.5	7.3	7.8	3.0
	9 th Grade	13.6	10.4	8.5	3.0
	11 th Grade	7.4	6.8	5.8	3.0
Psychedelics****	7 th Grade	5.7	0.6	1.4	N/A
	9 th Grade	6.2	3.8	3.1	N/A
	11 th Grade	4.9	6.0	4.9	N/A

Source: California Department of Justice, Seventh Biennial California Student Substance Abuse Survey, 1998, California Healthy Kids Survey, 2000

*** Changed from "have you ever had alcohol to drink" to "During your life have you ever used or tried at least one drink of alcohol, not just a sip-such as a can of beer, glass of wine, wine cooler or liquor?"

****Includes LSD

Current Substance Use by Students

National Comparison - Use in Last 30 Days

Substance	1994	1995	1996	1997	1998	1999	2000
Alcohol							
8 th Grade	25.5	24.6	26.2	24.5	23.0	24.0	22.4
10 th Grade	39.2	38.8	40.4	40.1	38.8	40.0	N/A
12 th Grade	50.1	51.3	50.8	52.7	52.0	51.0	50.0
Marijuana / Hashish							
8 th Grade	7.8	9.1	11.3	10.2	9.7	9.7	9.1
10 th Grade	15.8	17.2	20.4	20.5	18.7	19.4	N/A
12 th Grade	19.0	21.2	21.9	23.7	22.8	23.1	21.6
Cocaine							
8 th Grade	1.0	1.2	1.3	1.1	1.4	1.3	1.2
10 th Grade	1.2	1.7	1.7	2.0	2.1	1.8	N/A
12 th Grade	1.5	1.8	2.0	2.3	2.4	2.6	2.1
Amphetamines							
8 th Grade	3.6	4.2	4.6	3.8	3.3	3.4	N/A
10 th Grade	4.5	5.3	5.5	5.1	5.1	5.0	N/A
12 th Grade	4.0	4.0	4.1	4.8	4.6	4.5	N/A
Inhalants							
8 th Grade	5.6	6.1	5.8	5.6	4.8	5.0	4.5
10 th Grade	3.6	3.5	3.3	3.0	2.9	2.6	N/A
12 th Grade	2.7	3.2	2.5	2.5	2.3	2.0	2.2
Hallucinogens							
8 th Grade	1.3	1.7	1.9	1.8	1.4	1.3	1.2
10 th Grade	2.4	3.3	2.8	3.3	3.2	2.9	N/A
12 th Grade	3.1	4.4	3.5	3.9	3.8	3.5	2.6
Heroin							
8 th Grade	0.6	0.6	0.7	0.6	0.6	0.6	0.5
10 th Grade	0.4	0.6	0.5	0.6	0.7	0.7	N/A
12 th Grade	0.3	0.6	0.5	0.5	0.5	0.5	0.7

Source: University of Michigan, Institute for Social Research, *Monitoring the Future*, 2000.
 The *Monitoring the Future* survey does not indicate the school year, only the calendar year.

QUALITY OF LIFE INDICATOR 68

Mental and Physical Health

These tables represent people's perception of their mental and physical health, an important indicator of well-being.

Would you say that in general your mental health (including stress, depression and problems with emotions) is:

Response	1996	1997	1998	1999	2000	2001
Excellent	27.1	27.7	30.9	36.0	31.2	29.5
Very good	37.5	36.9	40.9	37.1	39.4	36.6
Good	23.6	22.4	21.6	21.3	20.7	22.0
Fair	10.0	10.8	5.6	5.0	7.6	9.3
Poor	1.8	2.2	1.0	0.5	1.2	1.9
Total Respondents	499	506	514	558	658	705

Would you say that in general, your physical health (including physical illness and injury) is:

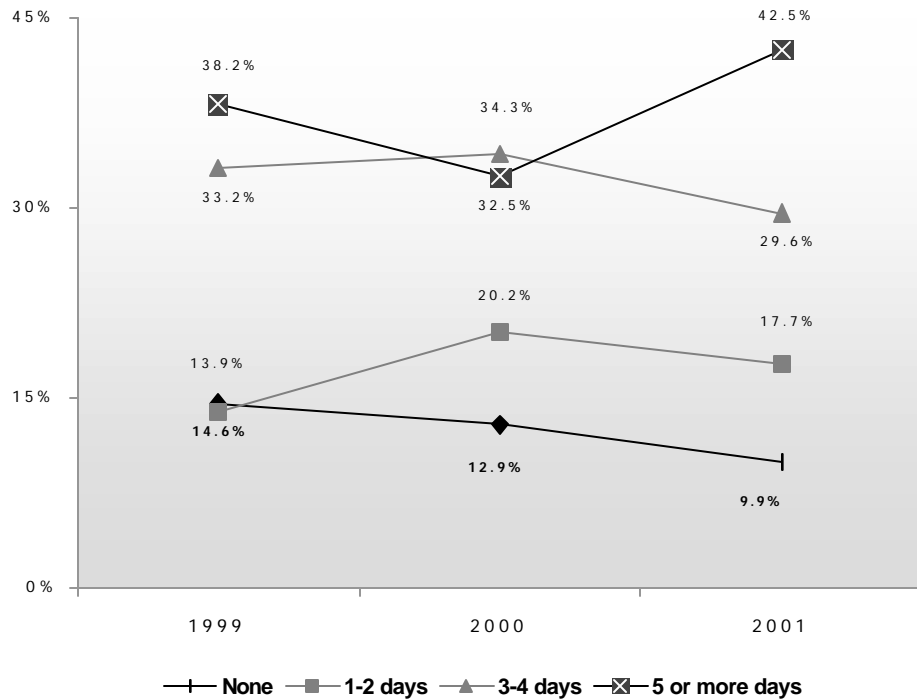
Response	1996	1997	1998	1999	2000	2001
Excellent	27.1	27.7	29.4	29.0	24.8	24.6
Very good	37.5	36.9	36.6	38.3	38.8	33.0
Good	23.6	22.4	22.8	19.7	24.8	24.6
Fair	10.0	10.8	9.3	10.4	10.3	12.3
Poor	1.8	2.2	1.9	2.7	1.4	5.1
Total Respondents	501	509	514	559	658	706

Source: Santa Cruz County Community Assessment Project, Telephone Survey.

Health Promotion

Physical activity is an important factor in achieving and maintaining good health.

How many days a week do you engage in physical activity for a combined total of 30 minutes or more?



How many days a week do you engage in physical activity for a combined total of 30 minutes or more?

Response	1999	2000	2001
None	14.6	12.9	9.9
1-2 days	13.9	20.2	17.7
3-4 days	33.2	34.3	29.6
5 or more days	38.2	32.5	42.5
Total Respondents	560	658	705

Source: Santa Cruz County Community Assessment Project, Telephone Survey.

QUALITY OF LIFE INDICATOR 70

Reported Communicable Diseases

Communicable diseases are an indicator of a community's overall health, and are largely preventable and/or treatable.

Reported Cases - Three Year Averages

Disease	93-95	94-96	95-97	96-98	97-99	98-00	97-99 to 98-00 % Change
Chlamydia	338	333	336	342	360	433	20.3
Gonorrhea	40	37	37	43	39	37	-5.1
Hepatitis A	44	54	54	50	43	23	-46.5
Hepatitis B (Acute)	12	12	12	11	11	7	-36.4
Lyme Disease	3	3	3	3	3	3	0.0
Measles	2	1	1	1	3	3	0.0
Pertussis (Whooping Cough)	15	28	28	60	66	57	-13.6
Salmonellosis	52	53	53	51	44	37	-15.9
Shigellosis	32	36	36	28	30	24	-20.0
Syphilis	16	13	13	6	4	1	-75.0
Tuberculosis	24	20	20	15	14	10	-28.6

Source: Santa Cruz County Health Services Agency, Communicable Disease Morbidity Comparisons, 2000.

Reported Communicable Diseases - AIDS

Newly Diagnosed Cases of AIDS, By Ethnicity

Ethnicity	1994	1995	1996	1997	1998	1999	2000
Caucasian	35	33	15	23	15	18	10
Hispanic	6	9	6	3	5	10	6
African American	0	1	1	0	1	3	0
Asian	1	3	0	0	0	1	0
Native American	1	0	1	2	0	1	0
Other / unknown	0	0	0	0	0	0	1
Total	43	46	23	28	21	33	17

Source: Santa Cruz County Health Services Agency Disease Control Unit, 2001.

Note: AIDS cases are attributed to the year in which the criteria for case definition were met, rather than to the year in which the disease was reported. Cases may thus be attributed retroactively, for example, to 1997 even if not reported until 2000. Updates are continual.

QUALITY OF LIFE INDICATOR 71

Suicides

Suicide, and the underlying problems associated with emotional pain continue to affect residents of all ages in Santa Cruz County.

Number of Suicides in Santa Cruz County, by Age

Age Group	1994	1995	1996	1997	1998	1999	2000
Under 18	3	1	1	2	1	0	1
18-29	8	4	4	7	7	4	3
30-39	8	8	6	7	3	8	5
40-49	8	8	8	6	11	5	8
50-59	7	1	8	2	5	6	6
60 and Above	7	5	9	4	3	4	11
Age unknown	-	-	-	-	-	1	-
Total	41	27	36	28	30	28	34

Source: Santa Cruz County Coroner's Office, 2001.

Note: Percentage changes are not given because small numbers of cases can generate unstable projections.

Comparison of Suicide Rates per 100,000 – Three-Year Averages

	1992-1994	1993-1995	1994-1996	1995-1997	1996-1998	1997-2000	National 2000 Objective
County	14.9	14.0	12.4	10.7	10.0	11.1	10.5
State	10.9	10.9	10.7	10.3	9.4	10.2	10.5

Source: California Department of Health Services and California Conference of Local Health Officers, County Health Status Profiles, 2001.

The importance of well-defined goals and objectives to improve the health of the nation was recognized by the United States Public Health Services, resulting in their publication of Healthy People 2000: National Health Promotion and Disease Prevention Objectives for the Nation. These objectives are included in the above column entitled 'National 2000 Objective.'

Leading Causes of Death – by Cause

Monitoring the causes of death is important for planning prevention activities.

Santa Cruz County Deaths per 100,000 Population

Cause of Death	1992-1994	1993-1995	1994-1996	1995-1997	1996-1998	1999 **	Year 2000 National Objective
Heart Disease	87.1	86.4	82.6	74.7	68.1	150.1	100.0
All Cancers	119.0	120.8	109.0	104.3	97.0	132.5	130.0
Lung Cancer	30.8	31.8	29.0	25.9	22.8	31.7	42.0
Breast Cancer	22.2	23.2	21.5	20.2	19.7	22.6	20.6
Stroke	23.3	24.7	24.7	25.3	21.7	46.5	20.0
Drug-Related	7.6	8.9	8.5	8.6	*6.9	10.6	3.0
Unintentional Injuries	23.0	23.0	23.7	23.3	23.6	22.3	29.3
Suicide	14.9	14.0	12.4	10.7	10.0	10.6	10.5
Firearm Injuries	9.9	8.5	6.7	* 5.3	* 6.5	4.7	11.6
Homicide	4.0	* 3.9	* 3.5	* 3.0	* 3.7	2.3	7.2
Motor Vehicle Crashes	11.2	10.4	11.2	11.0	10.8	3.5	14.2
Deaths due to All Causes	416.7	418.7	405.0	389.1	375.8	656.9	None set

Source: State of California, Department of Health Services and California Conference of Local Health Officers, County Health Status Profiles, 2001.

* Case rate unreliable, relative standard of error is greater than or equal to 23%.

** Rates for 1999 are reported for that year, rather than as a three-year average as in earlier years. Data for 1999 (reported in the 2000 Profiles, released in 2001) conform to the International Classification of Diseases, Tenth Revision (ICD-10). Previous years' data conformed to ICD-9, which has half as many categories, different coding rules, and some variations in titles and groupings. In the future, the Department of Health Services will provide data on a yearly basis. Data from 1999 therefore cannot be combined with previous years to compute three-year averages, although 1999 and 2000 data will be used to make a two-year average, after which three-year averages will be possible again.

QUALITY OF LIFE INDICATOR 72

Leading Causes of Death – by Cause

California Deaths per 100,000 Population

Cause of Death	1992-1994	1993-1995	1994-1996	1995-1997	1996-1998	1999 *	Year 2000
							National Objective
Heart Disease	103.9	101.3	100.6	96.9	93.9	171.6	100.0
All Cancers	118.0	116.2	115.9	113.3	110.3	155.2	130.0
Lung Cancer	32.8	32.2	31.8	31.0	30.0	40.4	42.0
Breast Cancer	20.0	19.7	19.7	18.9	18.3	24.0	20.6
Stroke	25.8	25.7	26.3	26.1	25.3	53.1	20.0
Drug-Related	7.8	7.9	8.0	7.9	7.5	9.0	3.0
Unintentional Injuries	27.1	26.6	26.6	25.7	24.2	26.2	29.3
Suicide	10.9	10.9	10.7	10.3	9.4	8.9	10.5
Firearm Injuries	17.0	16.3	15.0	13.5	11.6	8.8	11.6
Homicide	13.4	12.7	11.8	10.6	9.0	6.0	7.2
Motor Vehicle Crashes	13.4	13.2	13.2	12.4	11.4	9.2	14.2
Deaths due to All Causes	461.7	453.9	454.2	439.9	425.7	673.6	None set

Source: State of California, Department of Health Services and California Conference of Local Health Officers, County Health Status Profiles, 2001.

** Rates for 1999 are reported for that year, rather than as a three-year average as in earlier years. Data for 1999 (reported in the 2000 Profiles, released in 2001) conform to the International Classification of Diseases, Tenth Revision (ICD-10). Previous years' data conformed to ICD-9, which has half as many categories, different coding rules, and some variations in titles and groupings. In the future, the Department of Health Services will provide data on a yearly basis. Data from 1999 therefore cannot be combined with previous years to compute three-year averages, although 1999 and 2000 data will be used to make a two-year average, after which three-year averages will be possible again.

Leading Causes of Death, by Ethnicity Santa Cruz County

Caucasian

Cause of Death	1994	1995	1996	1997	1998	1999	% Change
Heart Disease	500	488	455	422	470	424	-9.8
Cancer	360	352	324	352	298	305	2.3
Stroke	99	149	115	126	105	81	-22.9
Chronic Obstructive Pulmonary Disease	77	87	97	84	84	75	-10.7
Pneumonia / Influenza	87	82	103	82	84	48	-42.9
Unintentional Injuries	43	48	49	52	42	44	4.8
Diabetes Mellitus	22	17	42	19	31	37	19.4
Suicide	32	24	30	19	27	30	11.1
Chronic Liver Disease Cirrhosis	22	25	22	20	23	25	8.7
Homicide	3	3	2	1	10	1	-90.0
AIDS	33	22	18	8	9	8	-11.1
All Other Causes / Residual	231	258	251	259	291	354	21.6
Total	1,509	1,555	1,508	1,444	1,474	1,432	-2.8

Latino

Cause of Death	1994	1995	1996	1997	1998	1999	% Change
Heart Disease	27	23	32	25	21	30	42.9
Cancer	24	23	22	39	21	28	33.3
Stroke	11	7	6	6	6	11	83.3
Chronic Obstructive Pulmonary Disease	3	4	1	0	3	2	-33.3
Pneumonia / Influenza	3	3	2	5	3	0	-100.0
Unintentional Injuries	16	19	10	12	5	13	160.0
Diabetes Mellitus	3	2	6	5	8	7	-12.5
Suicide	4	4	2	6	1	0	-100.0
Chronic Liver Disease Cirrhosis	6	3	4	8	4	5	25.0
Homicide	3	5	8	2	4	2	-50.0
AIDS	2	3	0	5	4	1	-75.0
All Other Causes / Residual	35	31	29	21	44	29	-34.1
Total	137	127	122	134	124	128	3.2

Source: State of California Department of Health Services, 1999.

QUALITY OF LIFE INDICATOR 72

Leading Causes of Death, by Ethnicity Santa Cruz County

African American

Cause of Death	1994	1995	1996	1997	1998	1999	Change	%
Heart Disease	1	0	3	4	2	1	-50.0	
Cancer	4	2	5	2	4	1	-75.0	
Stroke	0	0	1	1	1	0	-100.0	
Chronic Obstructive Pulmonary Disease	1	0	0	1	0	1	-	
Pneumonia / Influenza	0	0	0	1	0	0	-	
Unintentional Injuries	2	1	0	2	0	2	-	
Diabetes Mellitus	1	1	1	0	0	3	-	
Suicide	2	1	0	1	1	0	-100.0	
Chronic Liver Disease Cirrhosis	0	0	0	1	0	0	-	
Homicide	0	0	0	0	0	0	-	
AIDS	3	0	2	0	0	1	-	
All Other Causes / Residual	0	1	2	0	1	3	200.0	
Total	14	6	14	13	9	12	33.3	

Asian / Other (Includes American Indian)

Cause of Death	1994	1995	1996	1997	1998	1999	Change	%
Heart Disease	12	12	24	16	20	15	-25.0	
Cancer	12	4	8	11	6	11	83.3	
Stroke	5	5	10	5	3	4	33.3	
Chronic Obstructive Pulmonary Disease	1	0	3	0	1	3	200.0	
Pneumonia / Influenza	4	3	2	0	1	1	0.0	
Unintentional Injuries	6	2	0	3	6	4	-33.3	
Diabetes Mellitus	2	3	4	0	1	0	-100.0	
Suicide	0	0	2	0	0	1	-	
Chronic Liver Disease Cirrhosis	1	1	0	0	1	1	0.0	
Homicide	0	0	0	0	0	1	-	
AIDS	1	0	0	0	0	0	-	
All Other Causes / Residual	5	7	6	14	9	4	-55.6	
Total	49	37	59	49	48	45	-6.3	

Source: State of California Department of Health Services, 1999.

Leading Causes of Death, by Age Group Santa Cruz County

Monitoring the causes of death in children helps inform both the public and health practitioners about health risks and areas for prevention.

Children Under Age 1

Cause of Death	1994	1995	1996	1997	1998	1999
Perinatal Period	8	3	7	12	7	1
Congenital Anomalies	12	7	11	1	2	0
Symptoms/ Ill defined	4	1	3	0	2	1
Heart	1	0	0	1	2	0
Unintentional Injuries	1	0	0	0	1	0
AIDS	1	0	0	0	0	0
All Other Causes	1	2	0	3	6	5
Total	28	13	21	17	20	7

Children Ages 5-14

Cause of Death	1994	1995	1996	1997	1998	1999
Unintentional Injuries	2	2	1	0	3	1
Pneumonia & Influenza	0	1	1	1	0	0
Cancer	1	3	0	0	0	1
Congenital Anomalies	0	2	0	1	0	0
Aids	0	0	0	1	0	0
Homicide	0	0	1	0	0	0
All Other Causes	1	2	1	2	3	0
Total	4	10	4	5	6	2

Children Ages 1- 4

Cause of Death	1994	1995	1996	1997	1998	1999
Cancer	1	0	1	0	1	0
Unintentional Injuries	0	0	1	2	1	0
Congenital Anomalies	2	0	0	0	1	0
AIDS	0	1	0	0	0	0
Homicide	0	0	2	0	0	0
All Other Causes	1	0	0	0	2	0
Total	4	1	4	2	5	0

Children Ages 15-19

Cause of Death	1994	1995	1996	1997	1998	1999
Unintentional Injuries	2	5	2	6	4	5
Homicide	1	1	2	1	2	1
Suicide	1	0	1	2	2	0
Cancer	0	0	1	1	0	0
AIDS	0	0	0	0	1	0
All Other Causes	2	1	0	3	2	0
Total	6	7	6	13	11	6

Source: State of California, Department of Health Services, Death Records, 2001.

QUALITY OF LIFE INDICATOR 72

Deaths by Age Group and Ethnicity, Santa Cruz County

Deaths as a Percent of Population per Age Group - Caucasian, *Three Year Averages*

Age Group	1993-1995	1994-1996	1995-1997	1996-1998	1997-1999
<1	.60	.54	.44	.42	.27
1-4	.02	.03	.02	.04	.05
5-14	.02	.02	.02	.01	.01
15-19	.03	.03	.05	.04	.04
20-24	.05	.06	.06	.07	.05
25-34	.12	.12	.10	.08	.08
35-44	.19	.19	.18	.17	.15
45-54	.35	.34	.32	.30	.28
55-64	.92	.80	.75	.75	.71
65+	5.67	5.54	5.08	4.97	4.72

Deaths as a Percent of Population per Age Group - Latino, *Three Year Averages*

Age Group	1993-1995	1994-1996	1995-1997	1996-1998	1997-1999
<1	.61	.62	.52	.64	.41
1-4	.005	.009	.01	.01	.02
5-14	.02	.02	.02	.01	.01
15-19	.05	.07	.10	.11	.10
20-24	.11	.09	.06	.06	.06
25-34	.11	.11	.10	.10	.10
35-44	.13	.16	.17	.14	.12
45-54	.29	.28	.29	.26	.26
55-64	.61	.58	.60	.65	.67
65+	2.76	2.69	2.49	2.25	2.26

Source: State of California, Department of Health Services, Vital Statistics Section, 2001.

