

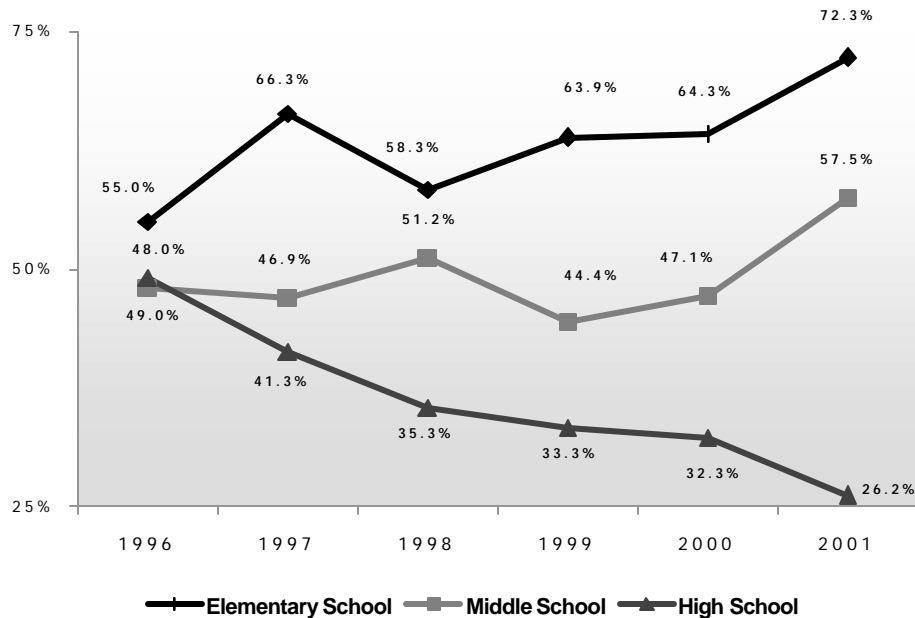
QUALITY OF LIFE INDICATOR 33

☎ Satisfaction with Child's Education

Parental satisfaction with local public schools is thought to be related to support for school programs, educational funding and student performance.



*How satisfied are you with your child's education?
(Respondents answering "very satisfied")*



How satisfied are you with your child's education?

Elementary School	1996	1997	1998	1999	2000	2001
Very satisfied	55.0	66.3	58.3	63.9	64.3	72.3
Somewhat satisfied	31.5	25.3	35.4	33.3	32.2	27.4
Not at all satisfied	13.5	8.4	6.2	2.8	3.5	0.3
Total Respondents	111	95	96	108	115	108

Middle School	1996	1997	1998	1999	2000	2001
Very satisfied	48.0	46.9	51.2	44.4	47.1	57.5
Somewhat satisfied	32.0	37.5	36.6	53.3	49.0	33.9
Not at all satisfied	20.0	15.6	12.2	2.2	3.9	7.7
Total Respondents	50	32	41	45	51	47

High School	1996	1997	1998	1999	2000	2001
Very satisfied	49.0	41.3	35.3	33.3	32.3	26.2
Somewhat satisfied	36.7	43.5	37.3	55.6	61.5	51.0
Not at all satisfied	14.3	15.2	27.5	11.1	6.2	14.0
Total Respondents	49	46	51	54	65	63

Note: Totals may not equal 100% due to respondents answering "don't know".

Source: Santa Cruz County Community Assessment Project, Telephone Survey.

See appendix for results of statistical testing for this question.

Satisfaction with Child's Education

Community Profile

Percent of respondents who answered "very satisfied" to: "How satisfied are you with your child's high school education?"

By Ethnicity	1998	1999	2000	*2001	2001 N
Caucasian	19.4	22.9	29.3	41.1	29
Latino	62.5	64.3	35.0	5.5	23

By Region	1998	1999	2000	2001	2001 N
North County	26.7	39.1	23.1	30.8	12
South County	44.4	34.8	38.2	24.7	28
San Lorenzo Valley	22.2	14.3	40.0	38.5	29

By Gender	1998	1999	2000	2001	2001 N
Male	-	25.0	32.0	27.2	26
Female	-	36.1	32.5	25.6	37

By Income	1999	2000	*2001	2001 N
Less than \$34,999	60.0	35.3	8.1	26
\$35,000 - \$65,499	25.0	42.9	47.3	17
\$65,500 and greater	14.3	24.1	28.0	18

* Indicates statistically significant survey responses when reporting differences between sub-groups for the 2001 data. Absence of this symbol indicates no statistical significance difference between sub-groups for the 2001 data.

Source: Santa Cruz County Community Assessment Project, Telephone Survey.

Significance Testing

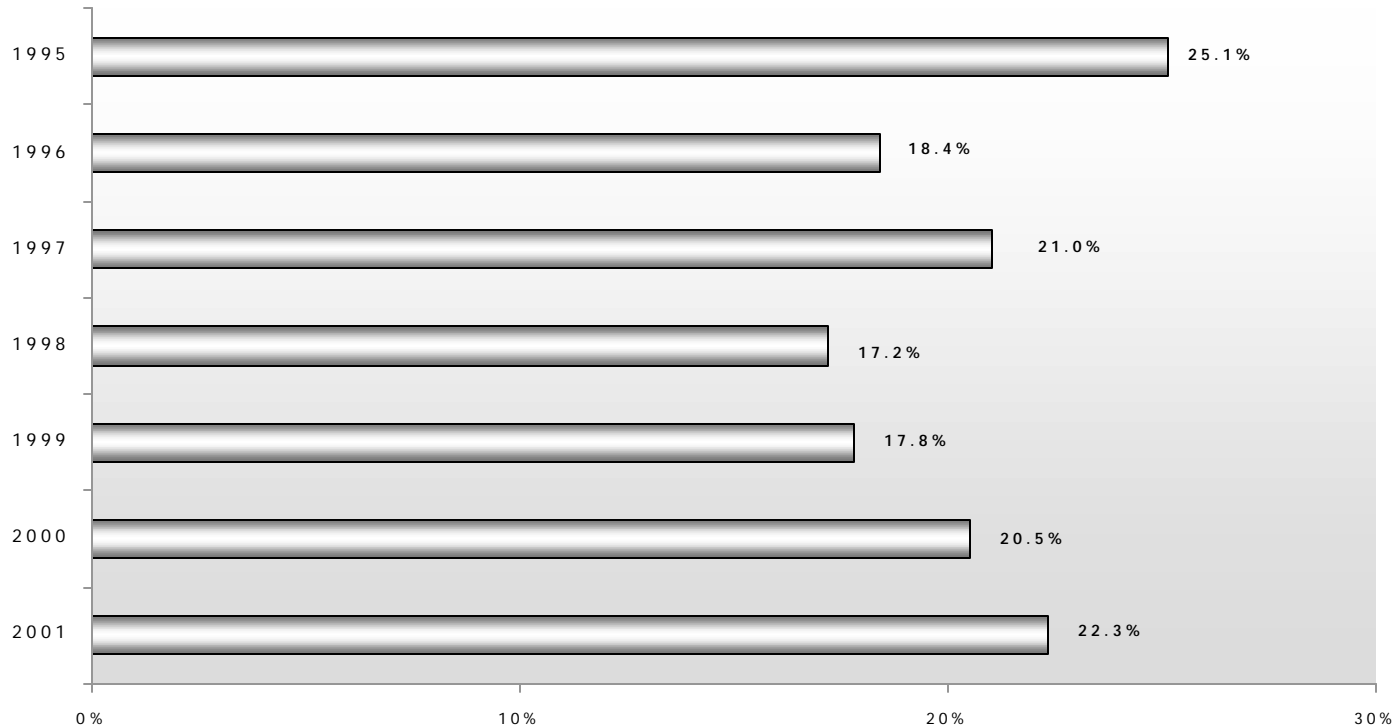
Income: \$34,999 or less significantly lower than \$35,000 - \$65,499.

QUALITY OF LIFE INDICATOR 34



Satisfaction with Educational System

Overall, how satisfied are you with our local system of education? (Respondents answering “very satisfied”)



Total respondents	1995	1996	1997	1998	1999	2000	2001
Overall	311	488	495	512	556	658	686

Source: Santa Cruz County Community Assessment Project, Telephone Survey.

This question was asked of all survey respondents regardless of whether they had children attending local schools or not.

See appendix for results of statistical testing for this question.

Satisfaction with Educational System

Community Profile

Percent of respondents who answered “very satisfied” to: “Overall, how satisfied are you with our local system of education?”

By Ethnicity	1998	1999	2000	*2001	2001 N
Caucasian	10.9	13.6	16.0	17.7	475
Latino	47.8	43.2	36.6	38.3	159

By Gender	1998	1999	2000	2001	2001 N
Male	-	17.1	18.1	20.7	339
Female	-	18.3	22.3	23.8	347

By Region	1998	1999	2000	*2001	2001 N
North County	13.8	15.2	15.0	17.9	197
South County	22.6	23.1	31.8	27.1	283
San Lorenzo Valley	14.1	13.6	17.7	33.4	203

By Income	1999	2000	2001	2001 N
Less than \$34,999	25.7	27.1	26.2	252
\$35,000 - \$64,499	14.1	20.4	15.4	166
\$65,500 and greater	12.5	11.3	20.6	206

By Age	1998	1999	2000	2001	2001 N
18-24	-	24.7	28.3	16.2	74
25-44	-	20.4	24.1	27.2	213
45-64	-	15.3	15.6	23.1	250
65 and older	-	9.9	12.8	16.1	148

* Indicates statistically significant survey responses when reporting differences between sub-groups for the 2001 data. Absence of this symbol indicates no statistical significance difference between sub-groups for the 2001 data.

Source: Santa Cruz County Community Assessment Project, Telephone Survey.

Significance Testing

Region: North County significantly lower than San Lorenzo Valley

QUALITY OF LIFE INDICATOR 34

Satisfaction with Educational System

*What are the best things happening in the local schools today?
(Selected responses)*

Response	1997	1998	1999	2000	2001
Good teachers	13.0	13.9	14.7	10.3	17.9
Extra curricular activities	5.7	9.3	6.1	4.3	10.4
Improved education	N/a	N/a	1.4	3.2	9.0
More parent / Community involvement	8.7	8.7	10.8	5.7	6.9
Better teaching methods	7.4	7.6	6.5	3.8	5.3
Class size reduction	10.7	12.3	7.2	6.9	4.4
Technology (computers)	10.9	15.3	7.0	10.8	4.6
Innovative programs	8.5	13.6	5.7	6.5	3.5

Year 2001: 657 respondents offering 820 responses

*What are the most serious problems facing local schools today?
(Selected responses)*

Response	1997	1998	1999	2000	2001
Funding	20.1	22.9	21.6	33.1	24.0
Overcrowded classes	12.9	15.2	12.0	13.3	17.2
Quality of teachers	12.7	7.7	8.6	7.6	15.5
Violence/ Gangs / Crime	16.1	13.9	24.5	17.5	14.1
Low teacher pay	-	-	1.4	7.8	12.0
Drugs / Alcohol	8.2	8.4	9.7	7.5	10.2

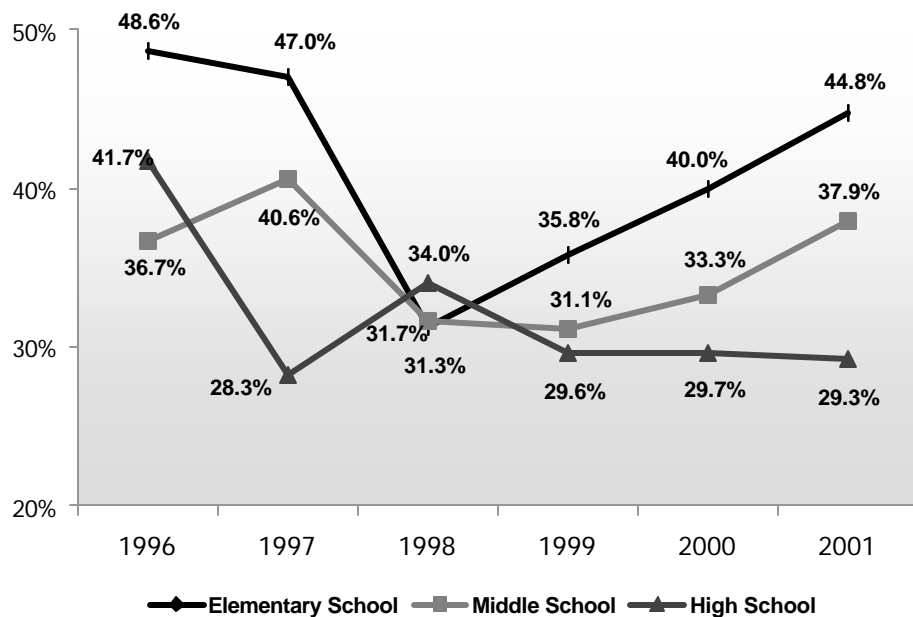
Year 2001: 687 respondents offering 1,036 responses

Source: Santa Cruz County Community Assessment Project, Telephone Survey.

Substance Abuse Prevention Programs

Drug and alcohol abuse prevention programs provide students with tools to make healthy choices.

How satisfied are you with the substance abuse prevention programs at your child(ren)'s school? (Respondents answering "very satisfied")



How satisfied are you with the substance abuse prevention programs at your child(ren)'s school?

Elementary School	1996	1997	1998	1999	2000	2001
Very satisfied	48.6	47.0	31.3	35.8	40.0	44.8
Somewhat satisfied	20.6	24.1	26.3	32.1	26.1	27.2
Not at all satisfied	7.5	6.0	8.1	1.9	7.0	4.7
Don't know	23.4	22.9	34.3	30.2	27.0	23.3
Total Respondents	107	83	99	106	115	104

Middle School	1996	1997	1998	1999	2000	2001
Very satisfied	36.7	40.6	31.7	31.1	33.3	37.9
Somewhat satisfied	30.6	37.5	36.6	51.1	41.2	46.5
Not at all satisfied	14.3	12.5	9.8	4.4	5.9	13.1
Don't know	18.4	9.4	22.0	13.3	19.6	2.4
Total Respondents	49	32	41	45	51	46

High School	1996	1997	1998	1999	2000	2001
Very satisfied	41.7	28.3	34.0	29.6	29.7	29.3
Somewhat satisfied	25.0	39.1	30.0	27.8	34.4	45.5
Not at all satisfied	18.8	19.6	14.0	13.0	20.3	12.5
Don't know	14.6	13.0	22.0	29.6	15.6	12.7
Total Respondents	48	46	50	54	64	62

Source: Santa Cruz County Community Assessment Project, Telephone Survey.

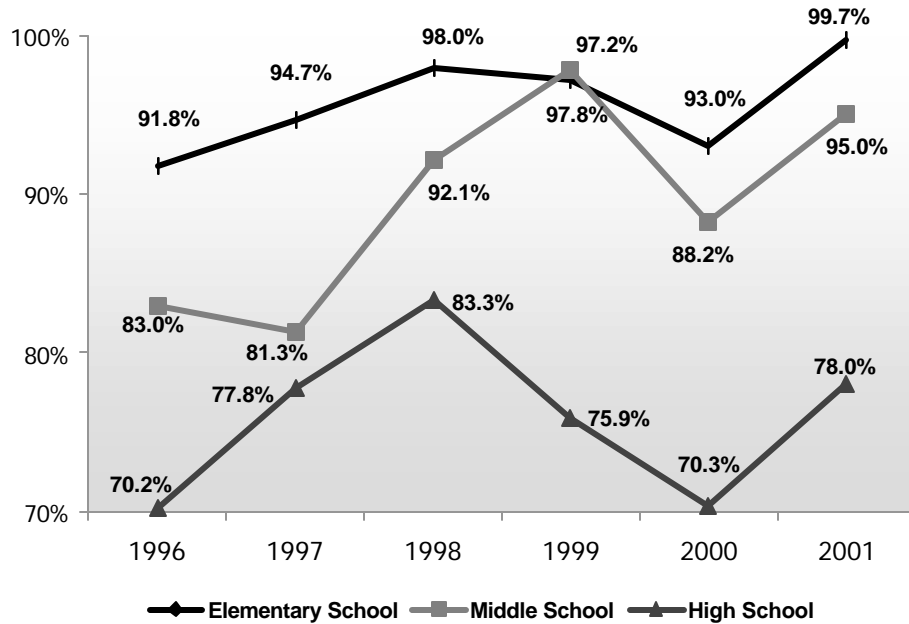
See appendix for results of statistical testing for this question.

QUALITY OF LIFE INDICATOR 36

☎ School Safety

This table reflects the perception of parents regarding safety at their children's schools.

Does your child(ren)'s school provide a safe environment for learning? (Respondents answering "yes")



Does your child(ren)'s school provide a safe environment for learning?

Elementary School	1996	1997	1998	1999	2000	2001
Yes	91.8	94.7	98.0	97.2	93.0	99.7
No	8.2	5.3	2.0	2.8	6.1	0.3
Total Respondents	110	94	98	108	115	108

Middle School	1996	1997	1998	1999	2000	2001
Yes	83.0	81.3	92.1	97.8	88.2	95.0
No	17.0	18.8	7.9	2.2	11.8	5.0
Total Respondents	47	32	38	45	51	47

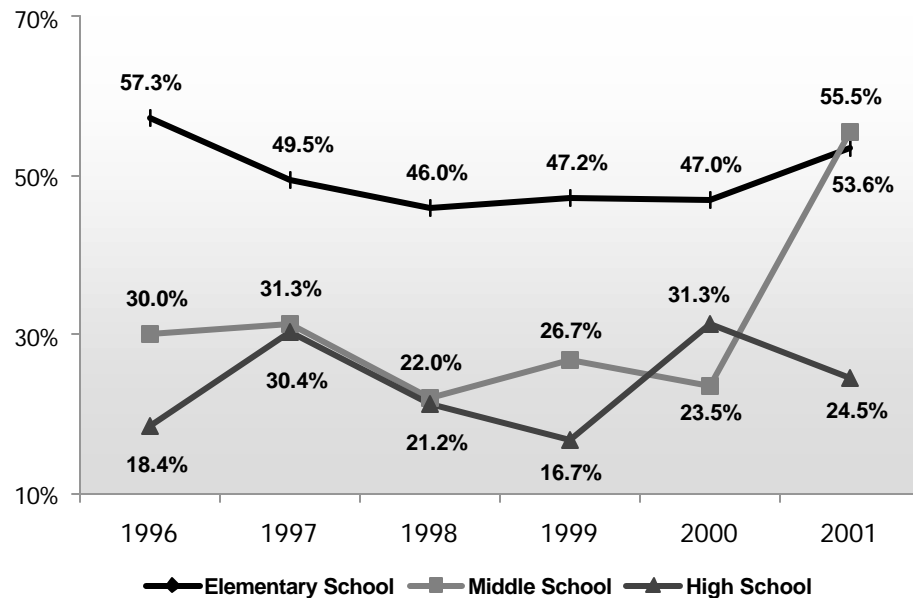
High School	1996	1997	1998	1999	2000	2001
Yes	70.2	77.8	83.3	75.9	70.3	78.0
No	29.8	22.2	16.7	20.4	26.6	13.2
Total Respondents	47	45	48	54	64	64

Source: Santa Cruz County Community Assessment Project, Telephone Survey.
 Note: Totals may not equal 100% due to respondents answering "Don't know".
 See appendix for statistical testing for this question.

Parent Participation

This table reflects involvement of parents in school activities.

How often do you participate in activities at your child(ren)'s school(s)? (Respondents answering "often")



How often do you participate in activities at your child(ren)'s school(s)?

Elementary School	1996	1997	1998	1999	2000	2001
Often	57.3	49.5	46.0	47.2	47.0	53.6
Sometimes	40.9	42.1	46.0	41.7	45.2	41.7
Never	1.8	8.4	8.0	11.1	7.8	4.7
Total Respondents	110	95	100	108	115	108

Middle School	1996	1997	1998	1999	2000	2001
Often	30.0	31.3	22.0	26.7	23.5	55.5
Sometimes	62.0	43.8	58.5	53.3	56.9	24.8
Never	8.0	25.0	19.5	20.0	19.6	13.6
Total Respondents	50	32	41	45	51	47

High School	1996	1997	1998	1999	2000	2001
Often	18.4	30.4	21.2	16.7	31.3	24.5
Sometimes	67.3	39.1	48.1	51.9	45.3	59.0
Never	14.3	30.4	30.8	31.5	23.4	13.7
Total Respondents	49	46	52	54	64	64

Source: Santa Cruz County Community Assessment Project, Telephone Survey.
Note: Totals may not equal 100% due to respondents answering "Don't know".
See appendix for results of statistical testing for this question.

QUALITY OF LIFE INDICATOR 38

Child Care Enrollment

Enrollment in preschool programs, including licensed child care and Head Start, can provide stimulation and socialization for children outside of the home and contribute to their school readiness, an important predictor of continued success in school.

Number of Children Enrolled in Licensed Child Care

Enrollment in Licensed Child Care (Full and Part-time)	September 1998	December 1999	December 2000	% Change
Infant (0 - 1)	897	906	793	-12.5
Preschool (2 - 5)	4,773	4,497	4,818	7.1
School-Age (6 and older)	1,179	1,726	2,172	25.8
Total Enrollment	6,849	7,129	7,783	9.2

Source: Santa Cruz County Office of Education, Child Development Resource Center, Child Care Switchboard, 2001.

Estimated Number of Children Needing Child Care

Children	1994	1995	1996	1997	1998	1999	2000	2001	% Change
Ages 0 – 2	6,478	6,141	5,946	5,756	5,752	5,769	5,840	5,876	0.6
Ages 3 – 5	6,249	6,672	6,746	6,525	6,208	6,043	5,861	5,860	0.0
Ages 6 – 13	16,775	17,048	17,504	18,280	19,068	19,536	20,035	20,322	1.4
Total	29,502	29,861	30,196	30,561	31,028	31,348	31,736	32,058	1.0

Source: California Department of Finance, Race / Ethnic Population with Age and Sex Detail, 1970-2040, December, 1998.

The above estimates of children needing child care are based on a formula used by The California Child Care Resource and Referral Network. Need for care is based on the employment status of the child's parents, also referred to as the Labor Force Participation rate (LFP). Children estimated to need care are those cared for by a single parent who is employed, or by two parents who are both employed. The LFP rate in Santa Cruz County for children ages 0 through 5 is 55%. The LFP rate for children ages 6 through 13 is 65%.

Calculation: Estimated population of age group x LFP of age group = number of children who need care.

Child Care Enrollment

Head Start Programs

Santa Cruz County Head Start	1995/96	1996/97	1997/98	1998/99	1999/00	2000/01	% Change
Enrollment	391	391	391	411	411	411	0.0
Waiting list	244	255	400	269	250	236	-5.6

Migrant Head Start – PVUSD	Spring 1995	Spring 1996	Spring 1997	Spring 1998	Spring 1999	Spring 2000	Spring 2001	% Change
Enrollment	300	300	300	300	300	320	683	113.4
Waiting List	150	100	200	215	165	-	50	-

Migrant Head Start - Growth & Opportunity	Spring 1995	Spring 1996	Spring 1997	Spring 1998	Spring 1999	Spring 2000
Enrollment	250	250	268	268	323	323
Waiting List	-	-	-	-	335	377

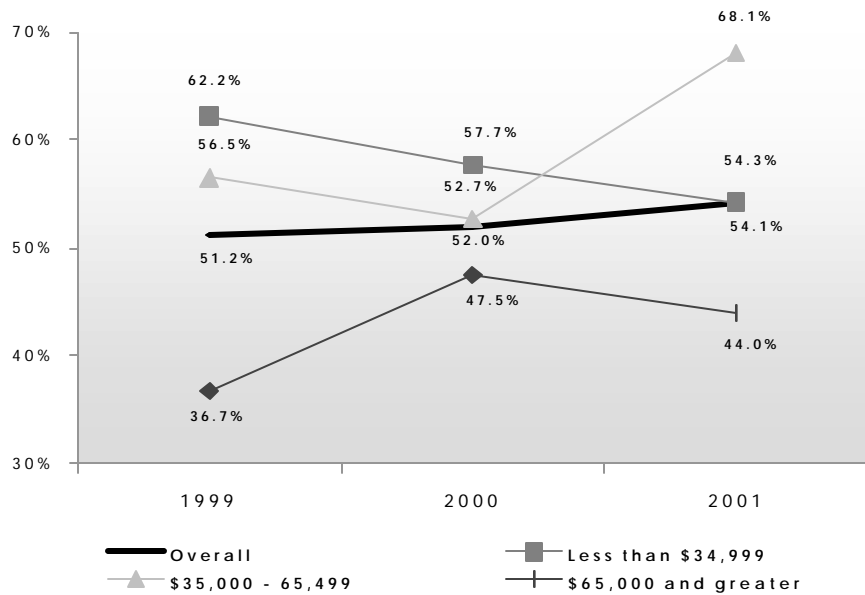
Source: Santa Cruz County Headstart, Migrant Head Start, 2001.

Note: The Migrant Head Start – Growth and Opportunity is no longer providing services.

QUALITY OF LIFE INDICATOR 39

☎ Child Care Arrangements

Does someone care for your children in order for you to work, go to school or be in training? (Respondents answering “yes”)



Total respondents	1999	2000	2001
Overall	162	198	181
Less than \$34,999	45	78	67
\$35,000 - \$65,499	46	55	46
\$65,500 and greater	60	60	56

If yes, how satisfied are you with this arrangement?

Responses	1999	2000	2001
Very satisfied	84.9	76.2	55.2
Somewhat satisfied	11.6	20.0	34.0
Not at all satisfied	3.5	3.8	10.8
Total responses	86	100	98

Source: Santa Cruz County Community Assessment Project, Telephone Survey.

Question asked of parents with children under age 14.

See appendix for result of statistical testing for these questions.

Child Care Arrangements

Community Profile

Percent of respondents who answered “yes” to: “Does someone care for your children in order for you to work, go to school or be in training?”

By Ethnicity	1999	2000	*2001	2001 N
Caucasian	46.2	47.3	42.9	86
Latino	60.0	56.8	67.9	77

By Gender	1999	2000	2001	2001 N
Male	51.0	53.2	62.4	87
Female	50.0	51.4	46.5	95

By Region	1999	2000	*2001	2001 N
North County	47.4	44.0	37.4	39
South County	58.5	61.4	68.5	103
San Lorenzo Valley	38.9	45.0	49.6	60

By Income	1999	2000	2001	2001 N
Less than \$34,999	62.2	57.7	54.3	67
\$35,000 - \$65,499	56.5	52.7	68.1	46
\$65,500 and greater	36.7	47.5	44.0	56

By Age	1999	2000	2001	2001 N
18-24 years of age	85.7	53.3	80.0	16
25-44 years of age	56.3	56.8	53.7	114
45-64 years of age	21.4	34.2	50.7	46
65 and older	0.0	0.0	0.0	5

* Indicates statistically significant survey responses when reporting differences between sub-groups for the 2001 data. Absence of this symbol indicates no statistical significance difference between sub-groups for the 2001 data.

Source: Santa Cruz County Community Assessment Project, Telephone Survey

Significance Testing

Region: *North County significantly lower than South County*

QUALITY OF LIFE INDICATOR 40

College Preparation Courses

Students should have access to the appropriate challenging courses to prepare for college acceptance and success.

Percent of Graduates Completing College Prep Courses, by District

School District	1994/95	1995/96	1996/97	1997/98	1998/99	1999/00
Pajaro Valley Unified	28.5	26.6	26.1	28.8	25.6	28.7
San Lorenzo Valley Unified	58.2	60.6	56.1	52.9	30.6	30.2
Santa Cruz City Schools	32.2	43.9	36.6	40.4	34.4	39.2
County	33.4	38.3	33.9	35.9	29.6	32.5
State	34.9	35.4	36.0	36.6	35.6	34.8

Percent of County Graduates Completing College Prep Courses, by Gender

Gender	1994/95	1995/96	1996/97	1997/98	1998/99	1999/00
Male	32.2	38.6	29.2	30.7	29.1	28.9
Female	36.6	38.0	38.4	40.4	30.1	36.3

Percent of County Graduates Completing College Prep Courses by Ethnicity

Ethnicity	1994/95	1995/96	1996/97	1997/98	1998/99	1999/00
Caucasian	43.4	49.3	43.2	46.6	38.6	39.1
Latino / Hispanic	15.1	15.1	15.8	15.7	13.5	20.0
Asian	61.0	43.8	68.1	63.3	45.0	56.2
African American	20.0	30.8	25.8	28.0	12.8	13.6
Filipino	21.7	28.6	25.0	32.0	14.3	22.2
American Indian	25.0	22.0	33.3	6.7	22.2	0.0
Pacific Islander	100.0	8.3	28.6	28.6	37.5	0.0

Source: California Department of Education, California Basic Educational Data System (CBEDS), 2001.

College Prep Courses are defined as: courses with a minimum grade of "C" or better accepted by the University of California and the California State University system as meeting their minimum admission standards. This includes 2 years of History / Social Science, 4 years of English, 3 years of mathematics, 2 years of laboratory science, 2 years of foreign language, and 2 years of college preparatory elective courses.

Community College Attendance

Attendance records at Community Colleges measure student enrollment as well as the demographic characteristics of students.

Cabrillo College Graduation Numbers

Cabrillo Graduates	1993/94	1994/95	1995/96	1996/97	1997/98	1998/99	1999/00	% Change
Associate of Arts	210	274	288	329	361	364	407	11.8
Associate of Science	222	217	255	226	223	228	198	-13.2
Certificates of Proficiency	115	143	102	109	108	100	94	-6.0
Total	547	634	645	664	692	692	699	1.0

Percentage of Cabrillo College Enrollment by Age

Age	Fall 1994	Fall 1995	Fall 1996	Fall 1997	Fall 1998	Fall 1999	Fall 2000
<18 or unknown	3.1	3.3	2.7	2.8	3.4	3.7	4.1
18-20	22.2	22.4	21.1	21.2	22.3	23.1	23.4
21-25	24.6	24.9	22.7	21.9	21.7	26.7	21.7
26-30	12.4	12.9	13.2	13.7	13.0	12.2	11.3
31-40	19.3	18.8	18.3	17.5	17.0	17.0	16.2
41-50	12.5	12.1	13.9	14.7	14.0	14.0	13.7
51-60	3.7	3.5	4.9	5.2	5.7	7.4	6.8
61+	2.3	2.2	3.2	3.0	3.0	3.4	2.9
Total	12,762	12,132	12,768	13,598	13,767	13,718	13,621
Average Age	29.8	29.5	30.9	31.1	30.9	32.0	30.2
Median Age	26.0	25.1	27.0	27.0	26.1	27.0	26.0

Source: Cabrillo College, Planning & Research Office, 2001.

Percentage of Cabrillo Graduates by Ethnicity

Ethnicity	1993-1994	1994-1995	1995-1996	1996-1997	1997-1998	1998-1999	1999-2000
Caucasian	77.7	77.8	74.0	70.2	71.8	66.6	64.7
Asian	6.9	6.9	6.0	8.0	6.0	5.5	5.5
African American	0.9	0.9	1.9	1.1	1.3	0.5	0.9
Latino / Hispanic	14.1	11.2	15.2	18.8	18.0	21.3	21.5
American Indian/Alaskan	0.2	1.3	1.7	1.2	1.5	1.2	1.5
Filipino	-	-	-	-	-	1.2	1.8
Pacific Islander	-	-	-	-	-	0.4	0.1
Other	0.2	1.6	0.9	0.8	1.3	2.7	1.9
Unknown	0.2	0.3	0.3	0.0	0.1	0.4	2.1
% Graduates of Color	22.3	22.2	26.0	29.8	28.2	33.4	35.3

QUALITY OF LIFE INDICATOR 42

College Attendance

Post-secondary education is increasingly important to ensure better job opportunities and higher earning potential.

University of California, Santa Cruz, Enrollment

Number of Enrollees	Fall 1994	Fall 1995	Fall 1996	Fall 1997	Fall 1998	Fall 1999	Fall 2000	% Change
Undergraduate	9,099	8,876	9,159	9,570	9,932	10,242	11,047	7.9
Graduate	1,018	1,047	1,056	1,068	1,094	1,060	1,097	3.5
Total	10,117	9,923	10,215	10,638	11,026	11,302	12,144	7.5

University of California, Santa Cruz, Graduates

Degrees	1994 -1995	1995 -1996	1996 -1997	1997 -1998	1998 -1999	1999 -2000	% Change
Undergraduate	2,711	2,298	2,339	2,205	2,293	2,432	6.1
Graduate	274	304	214	243	221	240	8.6
Doctorate	99	97	82	91	98	100	2.0
Total	3,084	2,699	2,635	2,539	2,612	2,772	6.1

Source: University of California Santa Cruz, Enrollment Fact Sheets, 2001.

University of California, Santa Cruz, New Freshman Home Location by Percentage

Home Location	Fall 1995	Fall 1996	Fall 1997	Fall 1998	Fall 1999	Fall 2000
Monterey Bay / Santa Clara	13.9	12.6	14.8	14.0	15.5	13.6
San Francisco / Bay Area	26.2	29.6	28.6	28.8	28.8	27.8
Northern California	3.2	3.6	3.5	3.6	3.1	2.8
East / Central California	9.5	10.9	10.6	11.9	10.7	11.1
Los Angeles / South Coast	30.0	27.5	25.1	23.5	24.0	27.1
San Diego / Desert	9.6	9.6	9.0	10.2	10.2	9.7
Other States	6.9	5.9	8.0	7.5	7.3	7.3
Foreign	0.7	0.3	0.4	0.7	0.4	0.6
Total	1,823	1,997	2,127	2,360	2,399	2,924

Adult Education Course Enrollments

Welfare reform and job to market changes may require access and participation in adult education opportunities.

Pajaro Valley Joint Unified School District

Program	1994 -1995	1995 -1996	1996 -1997	1997 -1998	1998 -1999	1999 -2000	% Change
Elementary Basic Education	172	312	1,495	1,267	202	262	29.7
High School Skills Independent Study	194	562	6,189	6,303	770	926	20.3
English as a Second Language	2,020	3,139	11,719	9,960	4,143	3,802	-8.2
Programs for Immigrants	146	322	374	271	99	-	N / A
Substantially Handicapped	23	77	322	384	110	88	-20.0
Vocational	193	277	821	909	319	515	61.4
Parent Education	66	97	790	1,059	329	385	17.0
Programs for Older Adults	283	594	3,816	3,990	925	741	-19.9
Health and Safety Education	16	32	39	36	29	40	37.9
Enrollees in Non-Approved Courses	-	-	-	613	763	-	N / A
Gain / CalWORKS Student	0	0	0	82	108	114	5.6
Unduplicated Total	-	5,412	7,922	7,241	6,926	7,290	5.3

Source: Pajaro Valley Unified School District, Adult Education, 2001.

Enrollment may be duplicated within each program area.

Santa Cruz City High School District

Program	1994 -1995	1995 -1996	1996 -1997	1997 -1998	1998 -1999	1999 -2000	% Change
Elementary Basic Education	129	0	0	676	604	264	-56.3
High School Skills Independent Study	721	878	893	2,275	605	530	-12.4
English as a Second Language	1,541	2,438	3,881	5,116	3,436	2,153	-37.3
Programs for Immigrants	52	55	59	38	24	0	-100.0
Substantially Handicapped	252	328	318	1,536	947	610	-35.6
Vocational	906	653	647	121	46	0	-100.0
Parent Education	505	310	315	2,825	1,641	1,001	-39.0
Programs for Older Adults	935	909	969	10,464	5,536	1,348	-75.7
Health and Safety Education	718	965	968	1,080	1,369	918	-32.9
Enrollees in Non-Approved Courses	-	-	-	1,424	1,348	1,250	-7.3
Home Economics Education	189	125	101	206	138	97	-29.7
Gain / CalWORKS Students	6	9	11	69	115	51	-55.7
Unduplicated Total	-	-	8,706	6,803	7,214	6,937	-3.8

Source: Santa Cruz City Schools, Adult Education, 2001.

Enrollment may be duplicated within each program area.

QUALITY OF LIFE INDICATOR 44

Job Training

Job training or retraining is a crucial factor in Welfare reform.

Workforce Investment Act (WIA) Program Enrollment

Type of Program	1994/95	1995/96	1996/97	1997/98	1998/99	1999/00	2000/01	% Change
Adult Worker Programs	317	550	742	566	527	430	275	-36.0
Summer Youth Employment Training Program / Year-round Youth Program	708	1,184	926	855	863	789	170	-78.5
Dislocated Worker Programs	267	214	547	572	429	414	200	-51.7
Welfare to Work / CalWorks / Youth Education Coordination Grant	-	-	509	422	493	801	*471	-41.2
Total	1,292	1,948	2,724	2,415	2,312	2,434	1,116	-54.1

Source: Human Resources Agency, Workforce Investment Act, 2001.

Low enrollment figures in 2000/01 reflect legislative changes and transition from Job Training Partnership Act (JTPA) to Workforce Investment Act (WIA) programs.

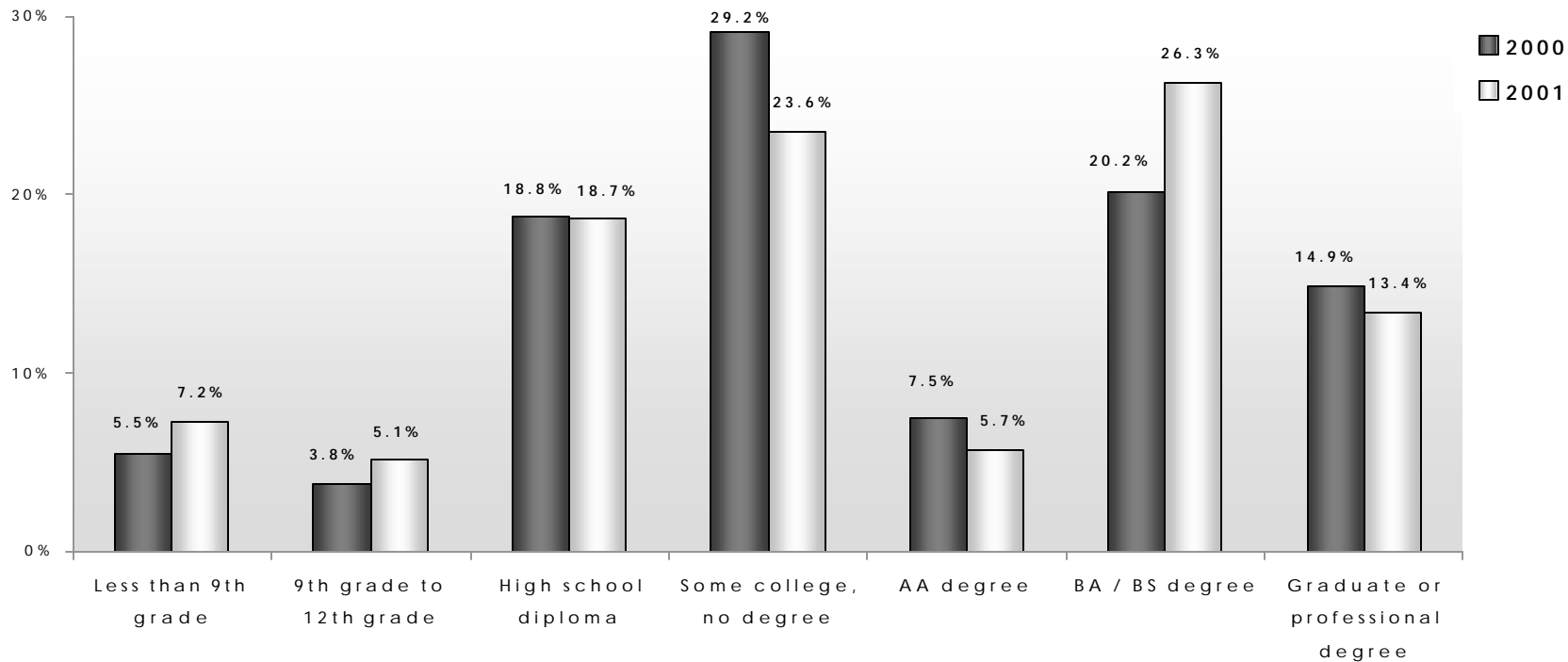
Older Workers are now synonymous with Adult Workers.

** Only includes Welfare To Work Enrollments.*

Educational Attainment

To participate successfully in the modern economy, increasingly driven by information and technology, people must keep pace with expanding education and skill requirements.

What is the highest level of education you have completed?



Total respondents	2000	2001
Overall	650	701

Source: Santa Cruz County Community Assessment Project, Telephone Survey.

QUALITY OF LIFE INDICATOR 45

Educational Attainment - 1990

Regional, State and National Percent Comparisons

Attainment Level	San Lorenzo Valley	Santa Cruz	Watsonville	Santa Cruz County	California	National
Less than 9th Grade	1.4	6.6	30.1	9.4	11.6	10.4
9th to 12th Grade, No Diploma	6.9	7.7	16.3	8.7	12.6	14.4
High School Graduate (Includes Equivalency)	20.5	17.9	21.7	19.0	22.3	30.0
Some College, No Degree	30.2	23.9	16.3	24.6	22.6	18.7
AA Degree	11.1	8.7	4.9	8.5	7.9	6.2
BA Degree	22.2	21.9	7.2	19.3	15.3	13.1
Graduate or Professional Degree	7.8	13.4	3.5	10.4	8.1	7.2
Percent of High School Graduates or higher	91.7	85.7	53.6	81.9	76.2	75.2
Percent of BA and higher	30.0	35.2	10.7	29.7	23.4	20.3
Number of Persons 25 or older	13,274	29,814	18,030	147,964	18,695,499	158,868,436

Source: U.S. Census Bureau, 1990.

 **New data not available from the 2000 Census at time of printing.**

Library Use

Availability of library services and resources provides an opportunity for community members to utilize technology and access information.

Circulation Statistics

Santa Cruz City and County	1994/95	1995/96	1996/97	1997/98	1998/99	1999/00*	2000/01
Service population	208,850	208,725	207,000	207,800	213,600	215,300	215,100
Registered borrowers	127,900	114,518	125,594	138,500	150,000	161,865	130,634
Area square miles	436.2	436.2	436.2	436.2	436.2	436.2	436.2
Total outlets	10	9	8	9	11	11	11
Total items circulated	1,294,732	1,330,223	1,306,640	1,487,293	1,516,540	1,488,951	1,646,030
Total per capita circulation	6.2	6.4	6.3	7.2	7.1	7.1	7.7
Hours open / 100 population	7.4	7.4	6.6	11.3	11.3	11.3	11.4

City of Watsonville	1994/95	1995/96	1996/97	1997/98	1998/99	1999/00	2000/01
Service population	33,800	33,800	36,650	42,350	39,200	39,800	39,800
Registered borrowers	29,671	29,671	34,297	38,230	42,459	23,315	38,402
Area square miles	5.8	5.8	5.8	6.2	6.2	6.2	6.2
Total outlets	1	1	2	2	2	2	2
Total items circulated	274,387	295,332	309,169	315,097	320,045	325,166	324,228
Total per capita circulation	8.1	8.7	8.4	7.4	8.2	8.1	8.1
Hours open / 100 population	8.3	8.3	9.8	10.0	10.7	10.6	10.6

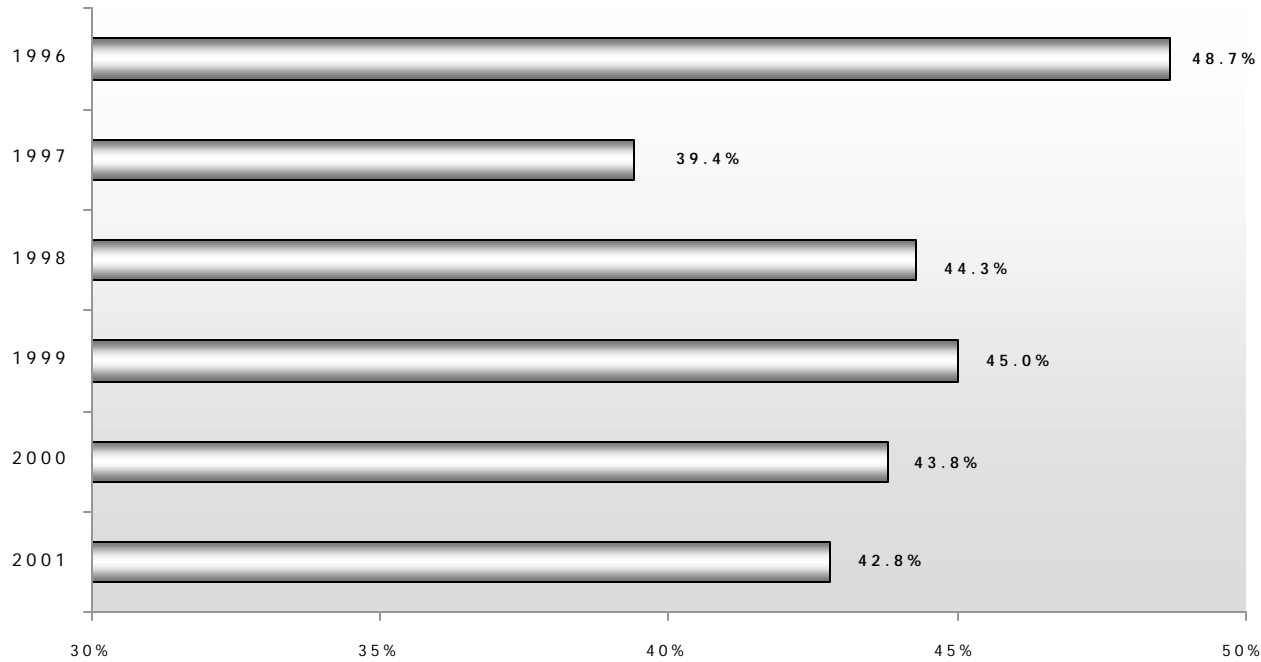
Source: Santa Cruz Public Libraries, Watsonville Public Library, California Library Statistics, 2001.

* Circulation was down in Santa Cruz for Fiscal Year 1999-2000, because the main library in downtown Santa Cruz was closed for remodeling March, April, May, and June, 2000.

QUALITY OF LIFE INDICATOR 46

 **Library Use**

Do you use the library on a regular basis? (Respondents answering “yes”)



Total respondents	1996	1997	1998	1999	2000	2001
Overall	501	505	508	560	651	706

Source: Santa Cruz County Community Assessment Project, Telephone Survey.

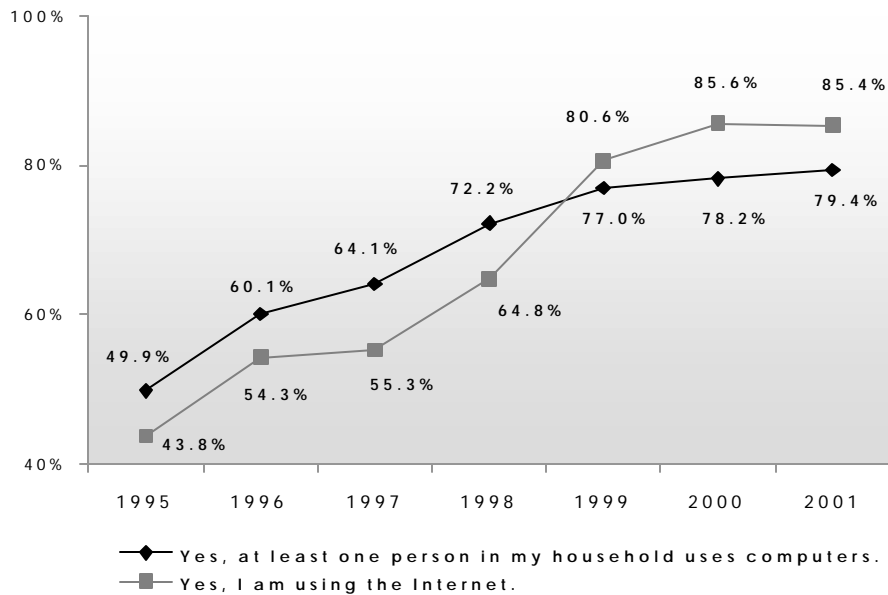
See appendix for results of statistical testing for this question.

Computer Use

Access to and use of technology is becoming a basic job and life skill.

Does at least one person in your household use computers?

*Of those using computers: Are you using the Internet?**



Total respondents	1995	1996	1997	1998	1999	2000	2001
Does at least one person in your household use computers?	351	499	507	510	561	657	706
Of those using computers: Are you using the Internet?	169	300	318	355	438	513	560

Is the computer used at:

Responses	1996	1997	1998	1999	2000	2001
Home	84.4	81.2	82.1	86.4	82.7	89.2
Work	70.2	65.2	66.3	65.8	65.4	62.3
School	70.2	43.1	42.4	44.8	42.6	34.1
Library	51.2	24.3	23.9	21.0	20.6	28.1

Year 2001: 560 respondents offering 1,221 responses.

Source: Santa Cruz County Community Assessment Project, Telephone Survey.

**The question prior to 1999 was worded as follows: Are you using on-line services?*

See appendix for results of statistical testing for these questions.

QUALITY OF LIFE INDICATOR 48

Literacy

Proficiency levels from the State and National Adult Literacy Survey correlate closely with educational attainment and income earning capacity. On average, people that scored at Level Two (275) or below made less than \$30,000 a year.

City, County and State Literacy Estimates, 1996

Jurisdiction	% persons at Level 1 (0 - 225)	% persons at Level 1 & 2 (0 - 275)	Average Literacy Score
Santa Cruz County	18.0	35.0	280
Watsonville	39.0	68.0	224
Santa Cruz	15.0	32.0	289
Monterey County	27.0	50.0	258
Salinas	33.0	60.0	240
Monterey	15.0	31.0	291
Pacific Grove	13.0	27.0	294
State	24.0	46.0	266
Nationwide *	23.0	51.0	267

Source: California Department of Education, Adult Education Office, 1992 State Adult Literacy Survey, Portland State University, Synthetic Estimates of Adult Literacy Proficiency, 1996.

* 1992

Statewide Literacy Levels, by Educational Attainment, 1992

Level of Education Attained	Prose Literacy Ave. Score	Document Literacy Ave. Score	Quantitative Literacy Ave. Score
0 to 8 grade	152	145	148
9 to 12 grade	225	219	225
High School Diploma	264	257	262
GED	263	259	261
Some Post Secondary	297	292	297
4 year College Degree	331	322	331

Source: Adult Education Office, State Adult Literacy Survey, 1992.

The National and State Adult Literacy surveys assess adults' literacy skills in English based on their performance on diverse tasks, similar to the type of demands adults encounter in their daily lives. The three types of literacy tested are Prose Literacy, Document Literacy, and Quantitative Literacy. The above scores are averages of the scores received for the three types of literacy. There are five levels of proficiency, ranging from 0 to 500.

Literacy surveys are conducted using a random sample of the population, only excluding those individuals who have no proficiency in English.

 **New data not available**

