

Community Assessment Project

Community

Report Card

Santa Cruz County, Year 6

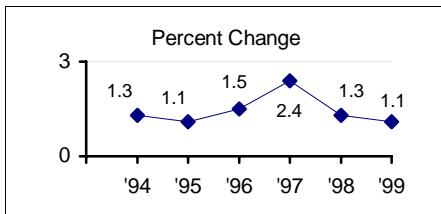
2000

What is the quality of life like in Santa Cruz County? Do residents feel safe? Are there enough employment opportunities? Do people feel they have access to good schools and services? Is our community healthy?

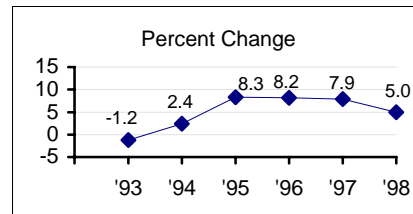
These are just a few of the questions that a consortium of public and private health, education, human service and civic organizations set out to answer when they began the Santa Cruz County Community Assessment Project six years ago.

On the following pages are selected findings that give a snapshot of the quality of life for people in Santa Cruz County today. We call it a Report Card because it can help us see our improvement and challenges over time.

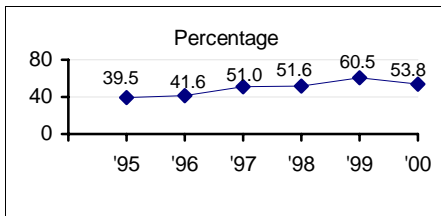
Economy



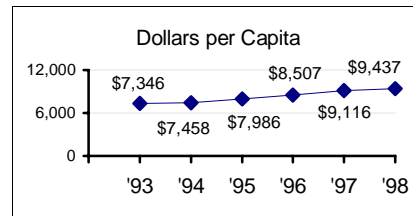
✓ Net job growth.



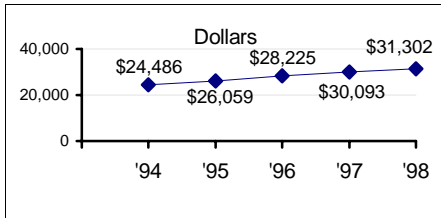
Taxable sales growth.



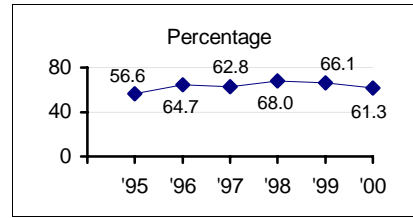
✓ Respondents indicating they are better off economically this year than last.



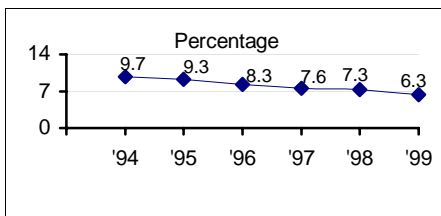
Per capita taxable sales of all outlets.



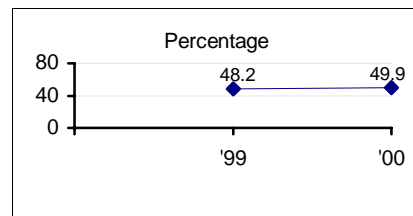
✓ Per capita personal income.



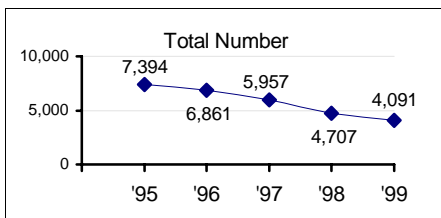
Respondents indicating that they feel they have opportunities to work in this area.



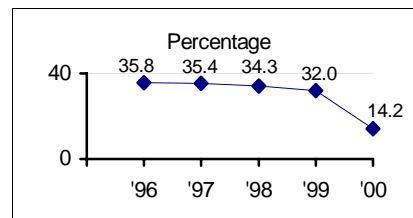
County annual unemployment rate.



✓ Respondents reporting that one half or more of their total take home income goes to rent / housing costs.




Children under 16 receiving TANF/AFDC benefits.

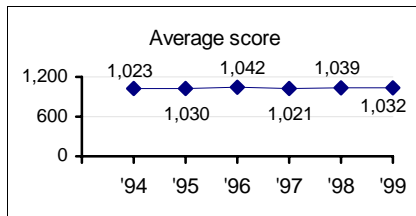


Percentage of homes affordable to median income families.

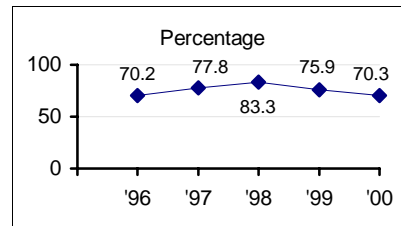
✓ Indicates Key Indicators throughout this document



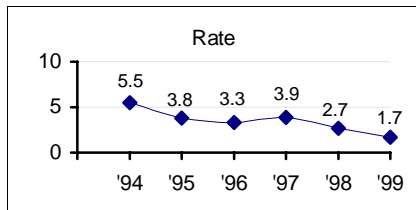
Education



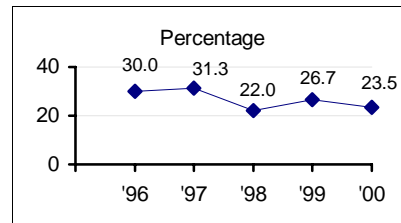
Average County SAT scores.



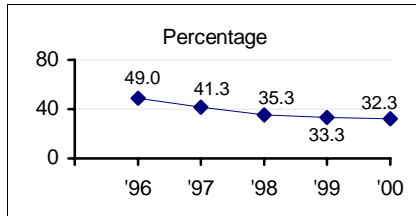
Parents reporting their child(ren)'s high school provides a safe environment for learning.



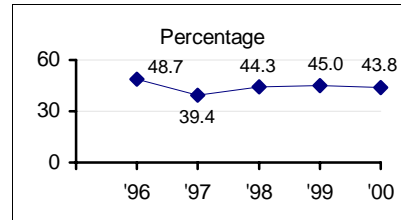
✓ Annual high school drop out rate.



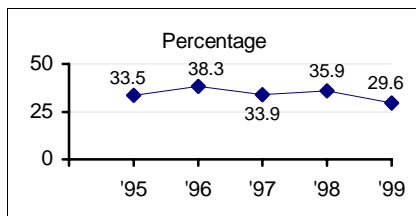
Parents reporting that they often participate in activities at their child(ren)'s middle school.



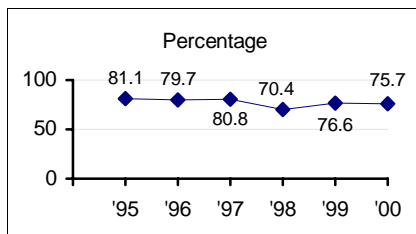
✓ Parents reporting being very satisfied with their child(ren)'s high school education.



Respondents indicating that they use the library on a regular basis.



Graduates completing college prep classes.

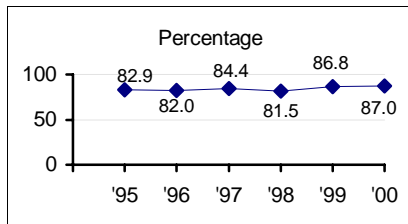


Respondents who think bilingual education is somewhat or very important.

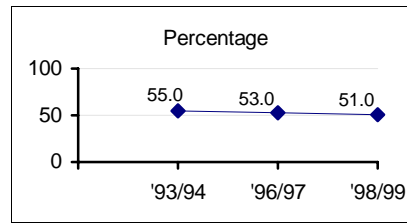
✓ Indicates Key Indicators throughout this document



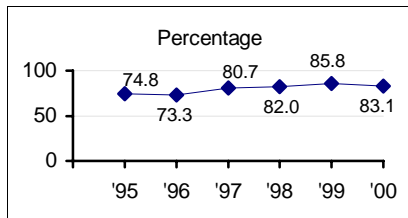
Health



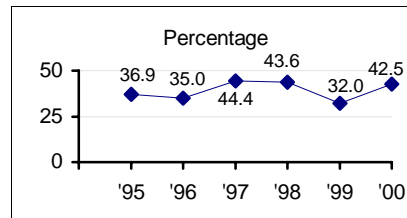
✓ Respondents reporting that they have a regular source of primary health care.



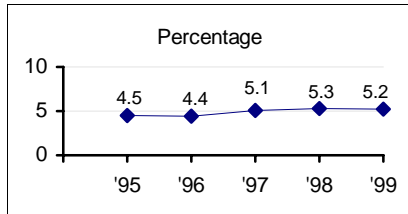
✓ Percent of eleventh graders reporting use of alcohol in the last 30 days.



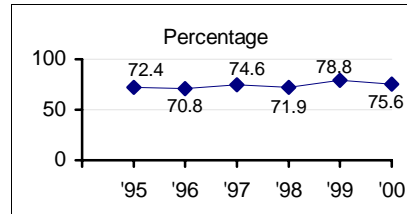
Respondents with health insurance.



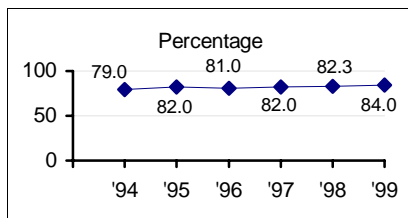
Respondents reporting that they think our community finds the use of marijuana very acceptable.



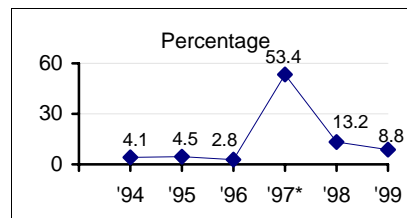
✓ Birth weight – percent of low weight births (under 5.5 pounds).



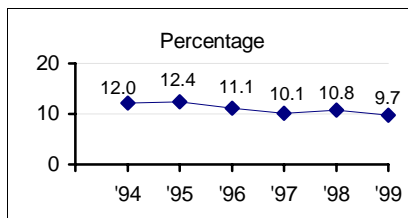
Respondents reporting that they have a regular source of dental care.



Prenatal care received in the first trimester.



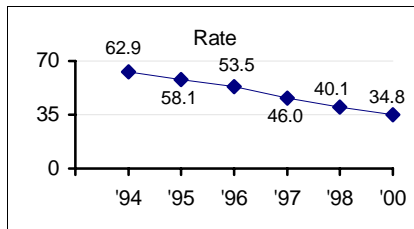
Kindergarten students needing one or more immunizations for admission to school.
*In 1997, the State required that incoming kindergartners complete the three dose Hepatitis B vaccine series. Because this requirement was new, many children were out of compliance.



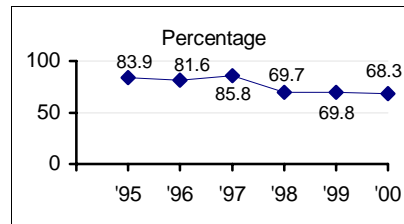
Teen Birth (percent of total births).

✓ Indicates Key Indicators throughout this document

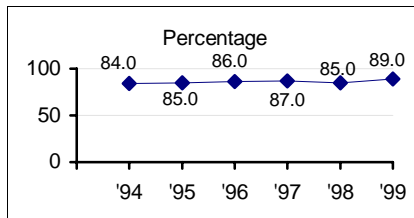
Public Safety



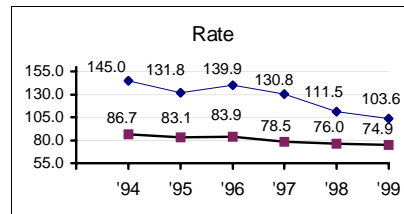
✓ Crime rate per 1,000 people.



Respondents reporting that children have a safe place to play in their neighborhood.

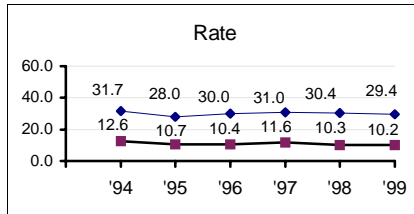


Repeat offenders in Water Street Jail facility.



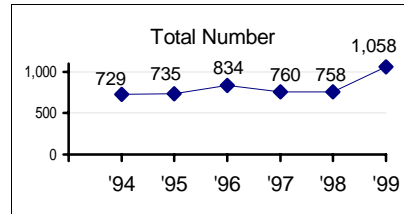
Adult Misdemeanor DUI Rate per 10,000

◆ California
■ Santa Cruz County



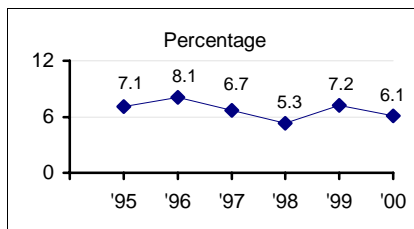
✓ Juvenile Crime Rate.

◆ Misdemeanor
■ Felony

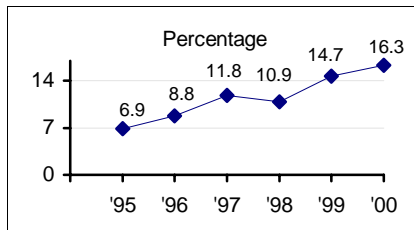


✓ Domestic violence calls for assistance.

*In 1999, the Sheriff's Office changed the method of categorizing domestic violence cases to comply with California Penal Code definitions. Cases that would have previously been classified as assault are now appropriately classified as domestic violence cases.



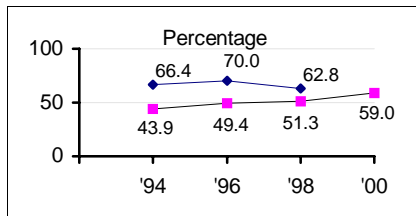
Respondents indicating that law enforcement is not at all effective.



✓ Respondents who reported that they are not at all concerned about crime in Santa Cruz County.

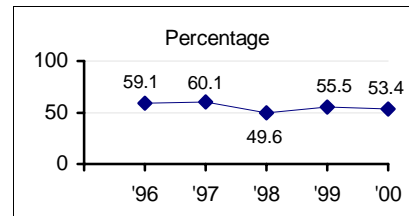
✓ Indicates Key Indicators throughout this document

Social Environment

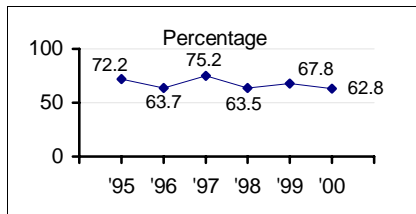


✓ Registered voter turnout for most recent state or national elections.

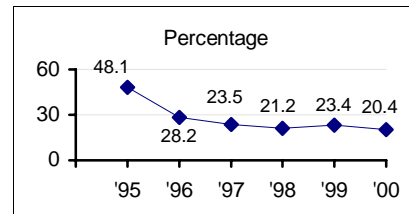
◆ General elections
■ Primary election



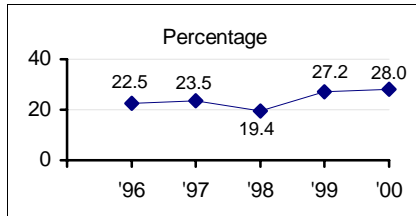
✓ Respondents reporting that racism is a problem locally.



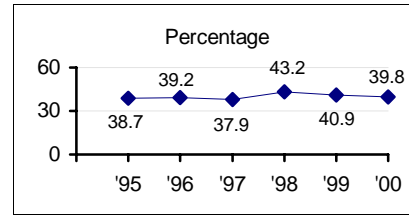
✓ Respondents reporting that they vote in every election.



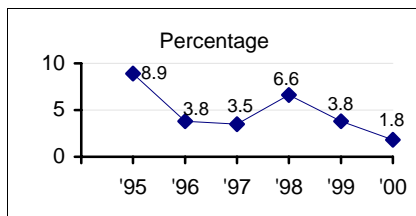
✓ Respondents reporting that they have felt discriminated against in the past three years.



Respondents reporting they are not at all prepared for a natural disaster.

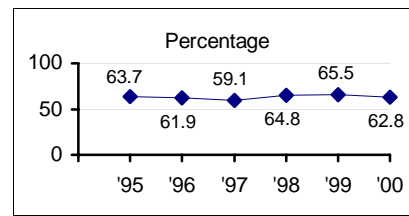


Respondents reporting that they regularly do volunteer work in the community.



Respondents reporting that they have been without a home locally in the last 5 years.

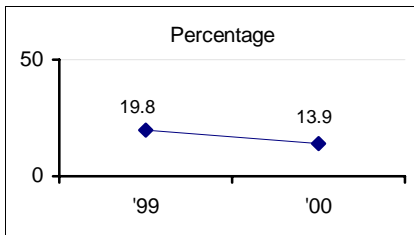
Note: Survey question changed to "1 year" for 2000.



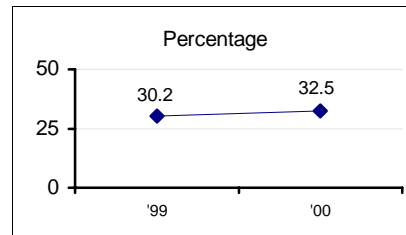
Respondents reporting that they regularly contribute money to charitable organizations.

✓ Indicates Key Indicators throughout this document

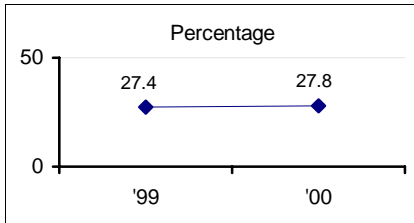
Natural Environment



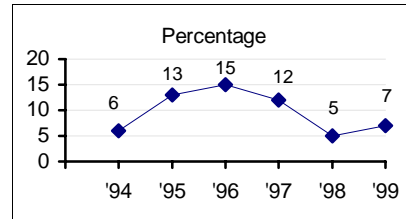
✓ Respondents reporting that the County is getting better at addressing drinking water quality.



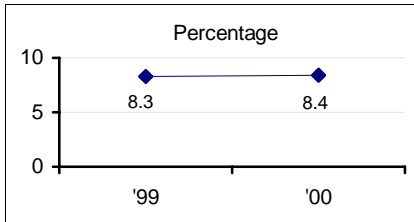
Respondents reporting they frequently use neighborhood parks.



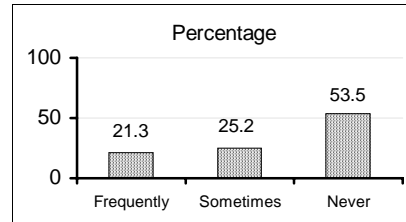
✓ Respondents reporting that the County is getting better at preserving open space.



Total days exceeding State Air Quality Standards.



✓ Percent of respondents who indicate they volunteer in environmental organizations and activities.



Respondents reporting how often they use transportation other than their own cars. (Year 2000)

✓ Indicates Key Indicators throughout this document