

## Nutritional Status by Selected Ethnicity

Percent of Patients 0-17 years with Low Hemoglobin (< 5<sup>th</sup> Percentile)

	1995	1996	1997	1998
Caucasian	10.7	14.7	15.5	14.4
Latino	13.2	14.5	14.2	13.4
All other	*	*	*	16.0
Not specified	16.8	16.7	23.5	13.0
<b>County Total</b>	<b>14.2</b>	<b>15.0</b>	<b>16.6</b>	<b>13.5</b>
State Total	16.5	15.6	15.0	14.0
Number of Persons Examined	3,382	2,568	2,810	4,180

\* Value does not meet standards of reliability or precision..

Low hemoglobin values (anemia) frequently indicate poor nutritional status, as do low or high weight for height measurements.

Percent of Patients 0-17 years with Low Weight / Height (< 5<sup>th</sup> Percentile)

	1995	1996	1997	1998
Caucasian	3.9	2.7	4.1	3.4
Latino	2.1	1.5	1.6	1.5
All other	2.9	3.3	-	2.7
Not specified	2.6	2.1	2.4	1.4
<b>County Total</b>	<b>2.5</b>	<b>1.7</b>	<b>2.0</b>	<b>1.8</b>
State Total	2.5	2.5	2.5	2.3
Number of Persons Examined	10,970	6,336	6,324	13,516

Source: Pediatric Nutrition Surveillance, Summary of Indicators by Age and Ethnic Groups, 1998.

*Quality of Life Indicator 58***Nutritional Status by Selected Ethnicity**Percent of Patients 0-17 with High Weight / Height (> 95<sup>th</sup> Percentile)

	<b>1995</b>	<b>1996</b>	<b>1997</b>	<b>1998</b>
Caucasian	9.5	8.8	8.8	8.4
Latino	13.9	15.3	16.4	15.4
All other	3.7	10.7	13.8	11.1
Not specified	12.6	11.4	13.1	16.0
<b>County Total</b>	<b>12.8</b>	<b>14.0</b>	<b>15.1</b>	<b>14.2</b>
State Total	13.3	13.1	13.4	14.1
Number of Persons Examined	10,970	6,336	6,304	13,516

Source: *Pediatric Nutrition Surveillance*, Summary of Indicators by Age and Ethnic Groups, 1998.

# Unintentional Injuries

## Unintentional Non-fatal Injuries, By Age

Age Group	1994	1995	1996	1997	1998	% Change
under 1	4	7	3	4	2	-50.0
1 to 4	30	21	35	40	26	-35.0
5 to 12	38	36	53	45	38	-15.6
13 to 15	16	18	22	29	25	-13.8
16 to 20	54	82	61	54	47	-13.0
Total Unintentional Injuries 0-20	142	164	174	172	138	-19.8
Population 0-20	69,870	70,973	71,938	73,185	74,538	1.8
<b>Rate per 1,000 — County</b>	<b>2.0</b>	<b>2.3</b>	<b>2.4</b>	<b>2.4</b>	<b>1.9</b>	-
Rate per 1,000 — State	3.2	3.1	2.9	2.8	2.8	-

Unintentional injuries such as falls, motor vehicle accidents and poisoning are largely preventable. Their measurement can help raise awareness as well as inform health prevention strategies to increase children's safety.

## Unintentional Non-fatal Injuries for Persons Ages 0-20, By Selected Cause

Cause of Injury	1994	1995	1996	1997	1998	% Change
Falls	47	47	56	60	51	-15.0
Motor Vehicle Traffic	49	51	46	38	30	-21.1
Stuck by Object	11	11	9	14	15	7.1
Poisoning	6	8	16	11	10	-9.1
Gunshot	0	3	2	0	1	100.0

Source: California Office of Statewide Health Planning and Development, Hospital Discharge Dataset, 1998.

*Quality of Life Indicator 60*

## Intentional Injuries

### Intentional Non-fatal Injuries, By Age

Age Group	1994	1995	1996	1997	1998	% Change
Under 1	0	1	0	1	0	-100.0
1 to 4	1	1	1	0	0	0.0
5 to 12	0	2	1	2	0	-100.0
13 to 15	13	10	5	13	9	-30.8
16 to 20	31	33	30	31	28	-9.7
Total Intentional Injuries 0-20	45	47	37	47	37	-21.3
Population 0-20	69,870	70,973	71,938	73,185	74,538	1.8
Rate per 1,000 — County	0.6	0.7	0.5	0.6	0.5	-
Rate per 1,000 — State	0.9	0.8	0.7	0.7	0.6	-

Intentional injuries are those injuries that result from aggression or self-harm. These data also indicate the prevalence of knives and firearms in cases of assault.

### Intentional Non-fatal Injuries for Persons Ages 0-20, By Selected Cause

Cause of Injury	1994	1995	1996	1997	1998	% Change
Intentional — Self Inflicted	18	23	19	24	27	12.5
Poisoning	15	20	17	21	24	14.3
Gunshot	0	0	0	0	0	0.0
Intentional — Assault	27	24	18	23	10	-56.5
Cut/ Pierce	14	6	7	14	8	-42.9
Gunshot	9	10	5	4	2	-50.0
<b>Total</b>	<b>45</b>	<b>47</b>	<b>37</b>	<b>47</b>	<b>37</b>	<b>-21.3</b>

Source: California Office of Statewide Health Planning and Development, Hospital Discharge Dataset, 1998.

## Alcohol Use

*How many times a week do you drink more than 2 alcoholic drinks in one sitting?  
(Asked of those 18 years and older)*

<b>Number of Times</b>	<b>1996</b>	<b>1997</b>	<b>1998</b>	<b>1999</b>	<b>2000</b>
None	66.9	63.6	73.2	66.5	65.4
1	14.7	15.9	12.8	9.5	16.6
2	7.2	8.5	6.2	6.8	10.5
3	3.9	3.7	2.7	5.7	3.8
4	2.0	2.0	1.2	3.4	1.4
5	0.8	2.0	1.0	1.8	0.9
6	0.4	0.0	0.0	1.3	0.2
7	4.1	4.3	2.9	5.0	1.2
<b>Total Respondents</b>	<b>489</b>	<b>508</b>	<b>514</b>	<b>558</b>	<b>656</b>

*Source: Santa Cruz County Community Assessment Project, Telephone Survey.*

Measures reported use of alcohol as well as the availability of alcohol in the community. (see following page)

*Quality of Life Indicator 61***Availability of Alcohol**

## Number of Alcohol Outlets Per 1,000 People

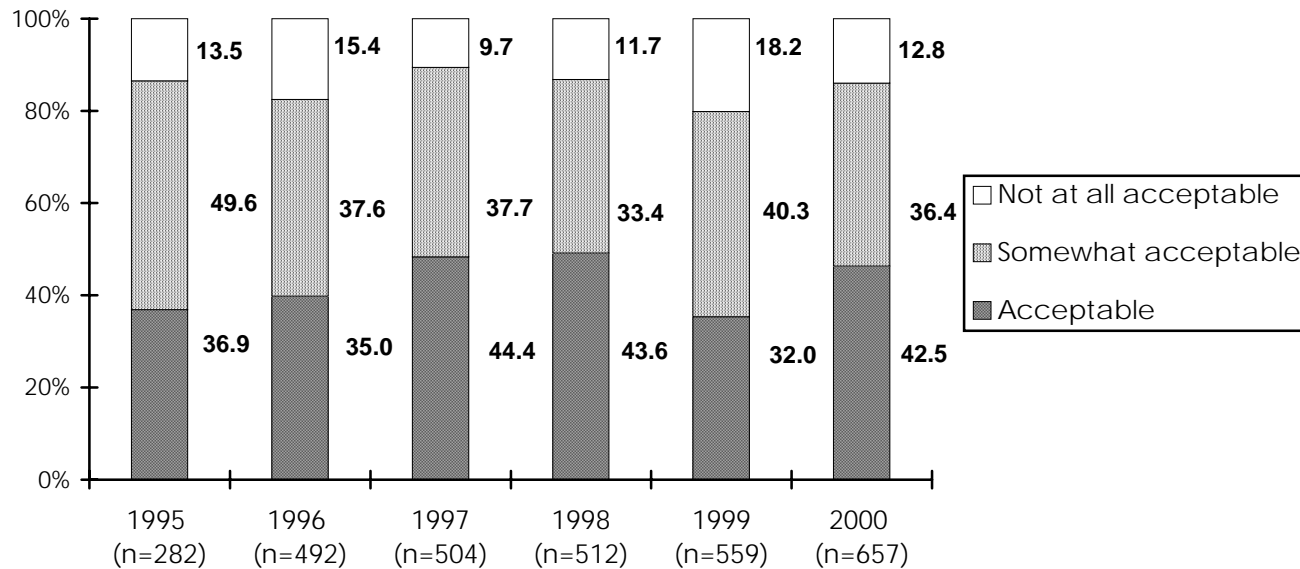
	<b>1995</b>	<b>1996</b>	<b>1997</b>	<b>1998</b>	<b>1999</b>	<b>% Change</b>
Retail Alcohol Outlets — County	679	663	668	657	638	-2.9
Retail Alcohol Outlets — State	N/a	66,678	66,459	66,295	66,268	.04
<b>Outlets per 1,000 People — County</b>	<b>2.8</b>	<b>2.7</b>	<b>2.7</b>	<b>2.6</b>	<b>2.5</b>	<b>-3.8</b>
Outlets per 1,000 People — State	2.1	2.1	2.0	2.0	2.0	0.0

*Source: Santa Cruz Alcohol and Drug Programs, California Department of Alcohol Beverage Control, 1999.*

*Retail alcohol outlets include off-sale establishments, where alcohol is sold for consumption off premises, such as supermarkets and liquor stores, as well as places where alcohol is consumed on the premises (bars, restaurants, etc).*

## Marijuana Use - Community Standards


*How acceptable do you think our community finds the use of marijuana for recreational or non-medicinal use?*



Measures perception of community tolerance towards the use of marijuana.

*Due to low numbers the “don’t know” response is not included in the graph. Question was reworded in 1999 to include “recreational or non- medicinal.”*

*Source: Santa Cruz County Community Assessment Project, Telephone Survey.*

*Quality of Life Indicator 62*** Marijuana Use - Community Standards** *Why do you think our community feels this way?**(Top four responses)*

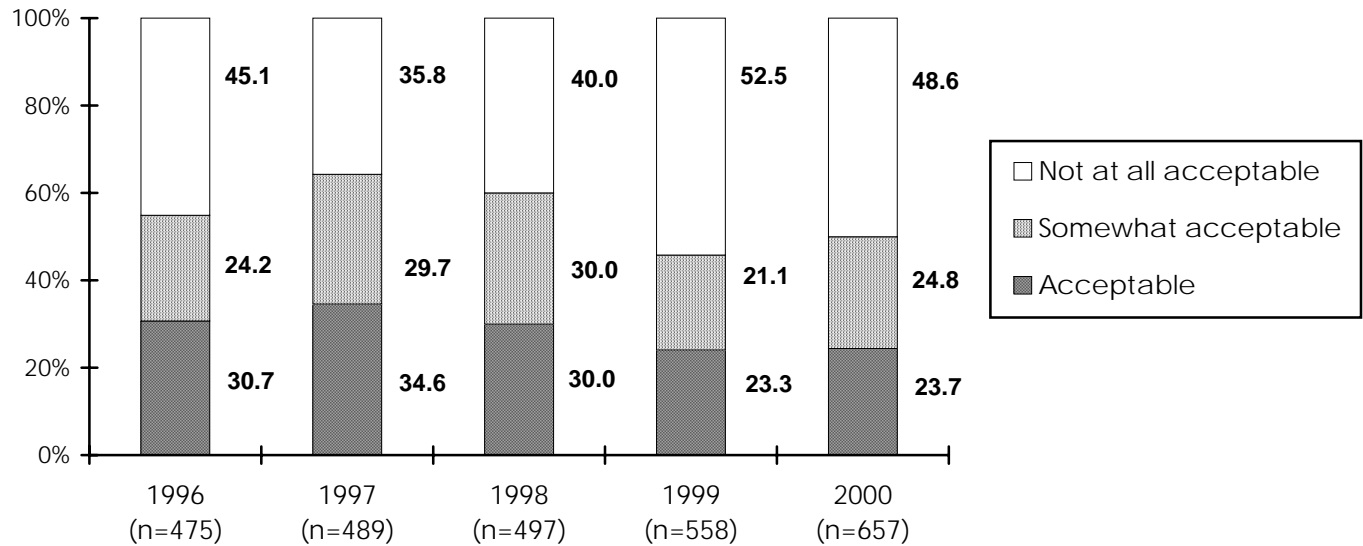
<b>Response</b>	<b>1998</b>	<b>1999</b>	<b>2000</b>
Liberal/ tolerant community	23.5	13.7	36.8
Acceptable/ many people using it	12.2	30.5	28.6
Not acceptable	4.6	13.9	8.9
O.K. for medical use	28.7	5.7	8.2

Year 2000: 619 respondents offering 749 responses.

*Question was reworded in 1999 to include “recreational or non- medicinal.”**Source: Santa Cruz County Community Assessment Project, Telephone Survey.*

## Marijuana Use - Personal Standards

*How acceptable do you find the use of marijuana for recreational or non-medicinal use?*



*Due to their low numbers, respondents who said "don't know" are not included in the graph.*

*Question was reworded in 1999 to include "recreational or non-medicinal."*

*Source: Santa Cruz County Community Assessment Project, Telephone Survey.*

*Quality of Life Indicator 63***Tobacco Use - Students**

## Student Tobacco Use, Santa Cruz County

<b>Frequency of Use</b>	<b>1994</b>	<b>1996</b>	<b>1998</b>
<b>Ever Used</b>			
6 <sup>th</sup> Grade	15.0	15.0	–
8 <sup>th</sup> Grade	49.0	41.0	35.0
9 <sup>th</sup> Grade	65.0	55.0	51.0
11 <sup>th</sup> Grade	64.0	66.0	59.0
<b>Used in Last 30 Days</b>			
6 <sup>th</sup> Grade	–	–	–
8 <sup>th</sup> Grade	–	–	16.0
9 <sup>th</sup> Grade	–	–	24.0
11 <sup>th</sup> Grade	–	–	27.0
<b>Use Daily</b>			
6 <sup>th</sup> Grade	<1.0	<1.0	–
8 <sup>th</sup> Grade	4.0	6.0	3.0
9 <sup>th</sup> Grade	11.0	9.0	7.0
11 <sup>th</sup> Grade	12.0	13.0	10.0
<b>Half a Pack or More a Day</b>			
6 <sup>th</sup> Grade	<1.0	<1.0	–
8 <sup>th</sup> Grade	2.0	8.0	1.0
9 <sup>th</sup> Grade	3.0	5.0	3.0
11 <sup>th</sup> Grade	6.0	6.0	4.0

Source: *The American Drug and Alcohol Survey, 1999.*

Measures the self-reported use of tobacco by students.

## Tobacco Use - Students

### State Comparison - Student Tobacco Use in the Last 30 Days

	1994	1996	1998
7 <sup>th</sup> Grade	17.7	15.1	13.4
9 <sup>th</sup> Grade	30.2	28.2	29.0
11 <sup>th</sup> Grade	29.1	30.5	29.3

Source: California Department of Justice, Seventh Biennial California Student Substance Abuse Survey, 1998.

### National Comparison - Student Tobacco Use in the Last 30 Days

	1994	1996	1998
8 <sup>th</sup> Grade	18.6	21.0	19.1
10 <sup>th</sup> Grade	25.4	30.4	27.6
12 <sup>th</sup> Grade	31.2	34.0	35.1

### Santa Cruz County - Student *Smokeless* Tobacco Use in the Last 30 Days

	1994	1996	1998
8 <sup>th</sup> Grade	-	-	2.0
9 <sup>th</sup> Grade	-	-	2.0
11 <sup>th</sup> Grade	-	-	4.0

Source: University of Michigan, Institute for Social Research, Monitoring the Future, 2000.

*Quality of Life Indicator 63***Tobacco Use - Adults**

## Adult Tobacco Use, Santa Cruz Tri-County Area,\*

	Current Smoker		Former Smoker		Quit Ratio	
	1990	1996	1990	1996	1990	1996
Tri-County Area	19.0	16.5	11.1	11.6	37.0	41.1
State	22.2	18.1	9.8	10.3	30.6	36.4

Source: Department of Health Services, *Tobacco Control in California: Who's Winning the War? 1998*.

All figures are within 95% confidence intervals. Former smoker and quit ratios are within the last five years. The sample size for the Santa Cruz Tri-County Area was 3,249 in 1990 and 3,645 in 1996.

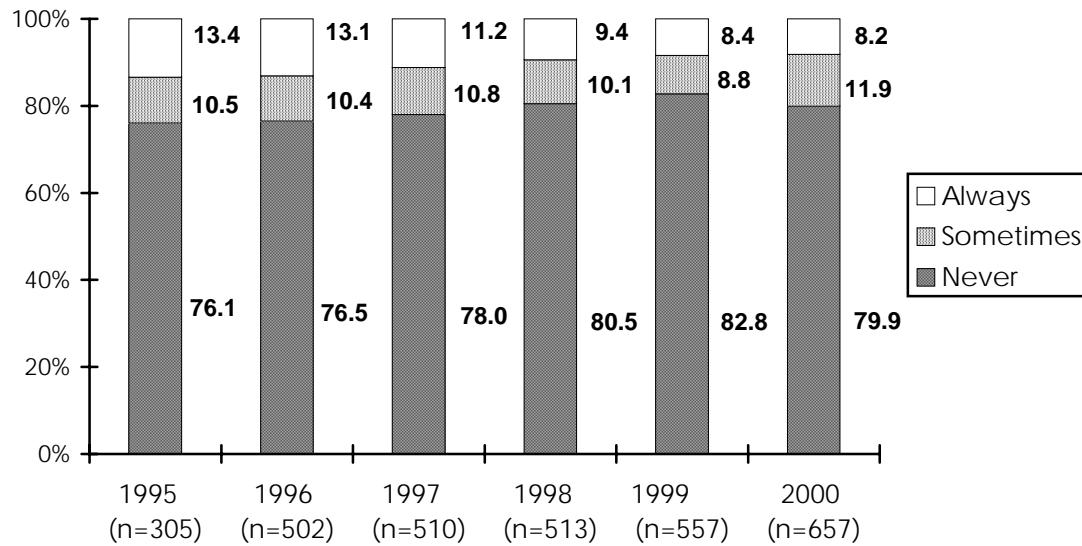
In California, the sample size was 65,139 in 1990, and 78,337 in 1996.

\* Santa Cruz Tri-County area includes Monterey, San Benito, and Santa Cruz Counties.

 **New data not available**

## Tobacco Use

*How often do you use tobacco?*



Source: Santa Cruz County Community Assessment Project, Telephone Survey.

*Quality of Life Indicator 64***Current Substance Use by Students**

Percent of Students Who Have Used Each Substance in the Last 30 Days, Santa Cruz County

<b>Substance</b>	<b>1993/94</b>	<b>1995/96</b>	<b>1998/99</b>
<b>Alcohol</b>			
8 <sup>th</sup> Grade	42.0	29.0	23.0
9 <sup>th</sup> Grade	51.0	42.0	38.0
11 <sup>th</sup> Grade	55.0	53.0	51.0
<b>Marijuana</b>			
8 <sup>th</sup> Grade	20.0	17.0	13.0
9 <sup>th</sup> Grade	35.0	30.0	25.0
11 <sup>th</sup> Grade	40.0	35.0	34.0
<b>Cocaine</b>			
8 <sup>th</sup> Grade	2.0	2.0	2.0
9 <sup>th</sup> Grade	3.0	3.0	3.0
11 <sup>th</sup> Grade	4.0	6.0	5.0
<b>Stimulants*</b>			
8 <sup>th</sup> Grade	3.0	1.0	2.0
9 <sup>th</sup> Grade	3.0	3.0	4.0
11 <sup>th</sup> Grade	3.0	4.0	3.0
<b>Inhalants</b>			
8 <sup>th</sup> Grade	10.0	7.0	6.0
9 <sup>th</sup> Grade	6.0	4.0	5.0
11 <sup>th</sup> Grade	3.0	2.0	1.0
<b>Hallucinogens**</b>			
8 <sup>th</sup> Grade	6.0	4.0	3.0
9 <sup>th</sup> Grade	10.0	6.0	5.0
11 <sup>th</sup> Grade	10.0	8.0	4.0
<b>Heroin</b>			
8 <sup>th</sup> Grade	-	2.0	1.0
9 <sup>th</sup> Grade	-	1.0	2.0
11 <sup>th</sup> Grade	-	2.0	1.0

Source: *The American Drug and Alcohol Survey, 1999.*

\* Includes amphetamines, methamphetamines

\*\* Includes PCP

Measures the self-reported drug and alcohol use among youth in Santa Cruz County, as well as statewide and national comparisons.

## Current Substance Use by Students

### State Comparison - Use in Last 30 Days

Substance	1993/94	1995/96	1998/99
<b>Alcohol</b>			
7 <sup>th</sup> Grade	27.8	23.2	21.7
9 <sup>th</sup> Grade	43.5	39.2	37.5
11 <sup>th</sup> Grade	50.1	47.7	46.9
<b>Marijuana</b>			
7 <sup>th</sup> Grade	11.1	6.2	7.5
9 <sup>th</sup> Grade	22.7	23.6	18.1
11 <sup>th</sup> Grade	25.6	25.9	25.7
<b>Cocaine/ Crack</b>			
7 <sup>th</sup> Grade	6.0	0.9	2.0
9 <sup>th</sup> Grade	5.5	2.6	—
11 <sup>th</sup> Grade	3.2	3.6	—
<b>Amphetamines</b>			
7 <sup>th</sup> Grade	6.1	0.7	1.7
9 <sup>th</sup> Grade	6.4	3.2	3.4
11 <sup>th</sup> Grade	5.8	4.5	5.9
<b>Inhalants</b>			
7 <sup>th</sup> Grade	13.5	7.3	7.8
9 <sup>th</sup> Grade	13.6	10.4	8.5
11 <sup>th</sup> Grade	7.4	6.8	5.8
<b>Psychedelics*</b>			
7 <sup>th</sup> Grade	5.7	0.6	1.4
9 <sup>th</sup> Grade	6.2	3.8	3.1
11 <sup>th</sup> Grade	4.9	6.0	4.9

Source: California Department of Justice, Seventh Biennial California Student Substance Abuse Survey, 1998.

\* Includes LSD

*Quality of Life Indicator 64*

## Current Substance Use by Students

### National Comparison - Use in Last 30 Days

Substance	1994	1995	1996	1997	1998	1999
<b>Alcohol</b>						
8 <sup>th</sup> Grade	25.5	24.6	26.2	24.5	23.0	24.0
10 <sup>th</sup> Grade	39.2	38.8	40.4	40.1	38.8	40.0
12 <sup>th</sup> Grade	50.1	51.3	50.8	52.7	52.0	51.0
<b>Marijuana / Hashish</b>						
8 <sup>th</sup> Grade	7.8	9.1	11.3	10.2	9.7	9.7
10 <sup>th</sup> Grade	15.8	17.2	20.4	20.5	18.7	19.4
12 <sup>th</sup> Grade	19.0	21.2	21.9	23.7	22.8	23.1
<b>Cocaine</b>						
8 <sup>th</sup> Grade	1.0	1.2	1.3	1.1	1.4	1.3
10 <sup>th</sup> Grade	1.2	1.7	1.7	2.0	2.1	1.8
12 <sup>th</sup> Grade	1.5	1.8	2.0	2.3	2.4	2.6
<b>Amphetamines</b>						
8 <sup>th</sup> Grade	3.6	4.2	4.6	3.8	3.3	3.4
10 <sup>th</sup> Grade	4.5	5.3	5.5	5.1	5.1	5.0
12 <sup>th</sup> Grade	4.0	4.0	4.1	4.8	4.6	4.5
<b>Inhalants</b>						
8 <sup>th</sup> Grade	5.6	6.1	5.8	5.6	4.8	5.0
10 <sup>th</sup> Grade	3.6	3.5	3.3	3.0	2.9	2.6
12 <sup>th</sup> Grade	2.7	3.2	2.5	2.5	2.3	2.0
<b>Hallucinogens</b>						
8 <sup>th</sup> Grade	1.3	1.7	1.9	1.8	1.4	1.3
10 <sup>th</sup> Grade	2.4	3.3	2.8	3.3	3.2	2.9
12 <sup>th</sup> Grade	3.1	4.4	3.5	3.9	3.8	3.5
<b>Heroin</b>						
8 <sup>th</sup> Grade	0.6	0.6	0.7	0.6	0.6	0.6
10 <sup>th</sup> Grade	0.4	0.6	0.5	0.6	0.7	0.7
12 <sup>th</sup> Grade	0.3	0.6	0.5	0.5	0.5	0.5

Source: University of Michigan, Institute for Social Research, *Monitoring the Future*, 2000.

The *Monitoring the Future* survey does not indicate the school year; only the calendar year.

## Mental and Physical Health

*Would you say that in general your mental health (including stress, depression and problems with emotions) is:*

<b>Response</b>	<b>1996</b>	<b>1997</b>	<b>1998</b>	<b>1999</b>	<b>2000</b>
Excellent	27.1	27.7	30.9	36.0	31.2
Very good	37.5	36.9	40.9	37.1	39.4
Good	23.6	22.4	21.6	21.3	20.7
Fair	10.0	10.8	5.6	5.0	7.6
Poor	1.8	2.2	1.0	0.5	1.2
<b>Total Respondents</b>	<b>499</b>	<b>506</b>	<b>514</b>	<b>558</b>	<b>658</b>

Measures people's perception of their mental and physical health - an important indicator of well being.

*Would you say that in general, your physical health (including physical illness and injury) is:*

<b>Response</b>	<b>1996</b>	<b>1997</b>	<b>1998</b>	<b>1999</b>	<b>2000</b>
Excellent	27.1	27.7	29.4	29.0	24.8
Very good	37.5	36.9	36.6	38.3	38.8
Good	23.6	22.4	22.8	19.7	24.8
Fair	10.0	10.8	9.3	10.4	10.3
Poor	1.8	2.2	1.9	2.7	1.4
<b>Total Respondents</b>	<b>501</b>	<b>509</b>	<b>514</b>	<b>559</b>	<b>658</b>

Source: Santa Cruz County Community Assessment Project, Telephone Survey.

*Quality of Life Indicator 66* **Health Promotion**

*How many days a week do you engage in physical activity for a combined total of 30 minutes or more?*

<b>Response</b>	<b>1999</b>	<b>2000</b>
None	14.6	12.9
1-2 days	13.9	20.2
3-4 days	33.2	34.3
5 or more days	38.2	32.5
<b>Total Respondents</b>	<b>100.0</b>	<b>100.0</b>

*Source: Santa Cruz County Community Assessment Project, Telephone Survey.*

## Reported Communicable Diseases

### Reported Cases - Three Year Averages

Disease	1993-1995	1994-1996	1995-1997	1996-1998	1997-1999	% Change
Chlamydia	338	333	336	342	360	5.3
Gonorrhea	40	37	37	43	39	-9.3
Hepatitis A	44	54	54	50	43	-14.0
Hepatitis B (Acute)	12	12	12	11	11	0.0
Lyme Disease	3	3	3	3	3	0.0
Measles	2	1	1	1	3	200.0
Pertussis (Whooping Cough)	15	28	28	60	66	10.0
Salmonellosis	52	53	53	51	44	-13.7
Shigellosis	32	36	36	28	30	7.1
Syphilis	16	13	13	6	4	-33.3
Tuberculosis	24	20	20	15	14	-6.7

Source: Santa Cruz County Health Services Agency, Communicable Disease Morbidity Comparisons, 1999.

Communicable diseases are an indicator of a community's overall health, and are largely preventable and/or treatable.

*Quality of Life Indicator 67***Reported Communicable Diseases - AIDS**

## Newly Diagnosed Cases of AIDS, By Ethnicity

<b>Ethnicity</b>	<b>1994</b>	<b>1995</b>	<b>1996</b>	<b>1997</b>	<b>1998</b>	<b>1999</b>
Caucasian	35	33	15	21	13	16
Hispanic	6	9	6	3	4	7
African American	0	1	1	0	1	3
Asian	1	3	0	0	0	1
Native American	1	0	1	2	0	1
Other / unknown	0	0	0	0	0	0
<b>Total</b>	<b>43</b>	<b>46</b>	<b>23</b>	<b>26</b>	<b>18</b>	<b>28</b>

*Source: Santa Cruz County Health Services Agency, HIV/AIDS Reporting System, 1999.*

*AIDS case reports and their attribution to a specific year depends on the year when the criteria for case definition were met and not on the year reported. Thus, a case reported in 2000 may have met the case definition in 1997, and will be attributed retrospectively to 1997 data. Data tables are updated continuously.*

# Suicides

## Number of Suicides, by Age, Santa Cruz County

Age Group	1994	1995	1996	1997	1998	1999
Under 18	3	1	1	2	1	0
18-29	8	4	4	7	7	4
30-39	8	8	6	7	3	8
40-49	8	8	8	6	11	5
50-59	7	1	8	2	5	6
60 and Above	7	5	9	4	3	4
Age unknown	-	-	-	-	-	1
<b>Total</b>	<b>41</b>	<b>27</b>	<b>36</b>	<b>28</b>	<b>30</b>	<b>28</b>

Source: Santa Cruz County Coroner's Office, 2000.

Suicide, and the underlying problems associated with emotional pain continue to affect residents of all ages in Santa Cruz County.

## Comparison of Suicide Rates per 100,000 - Three Year Averages

	1992-1994	1993-1995	1994-1996	1995-1997	1996-1998	National 2000 Objective
County	14.9	14.0	12.4	10.7	10.0	10.5
State	10.9	10.9	10.7	10.3	9.4	1.05

Source: State of California, Department of Health Services and California Conference of Local Health Officers, County Health Status Profiles, 2000.

The importance of well-defined goals and objectives to improve the health of the nation was recognized by the United States Public Health Services, resulting in their publication of Healthy People 2000: National Health Promotion and Disease Prevention Objectives for the Nation. These objectives are included in the above column entitled 'National 2000 Objective.'

*Quality of Life Indicator 69***Leading Causes of Death – by Cause***Santa Cruz County Deaths per 100,000 Population - Age-Adjusted, Three-Year Averages*

<b>Cause of Death</b>	<b>1992-1994</b>	<b>1993-1995</b>	<b>1994-1996</b>	<b>1995-1997</b>	<b>1996-1998</b>	<b>Year 2000 National Objective</b>
Heart Disease	87.1	86.4	82.6	74.7	68.1	100.0
All Cancers	119.0	120.8	109.0	104.3	97.0	130.0
Lung Cancer	30.8	31.8	29.0	25.9	22.8	42.0
Breast Cancer	22.2	23.2	21.5	20.2	19.7	20.6
Stroke	23.3	24.7	24.7	25.3	21.7	20.0
AIDS*	20.6	15.7	14.5	11.9	7.8	43.0
Drug-Related	7.6	8.9	8.5	8.6	**6.9	3.0
Unintentional Injuries	23.0	23.0	23.7	23.3	23.6	29.3
Suicide	14.9	14.0	12.4	10.7	10.0	10.5
Firearm Injuries	9.9	8.5	6.7	** 5.3	** 6.5	11.6
Homicide	4.0	** 3.9	** 3.5	** 3.0	** 3.7	7.2
Motor Vehicle Crashes	11.2	10.4	11.2	11.0	10.8	14.2
<b>Deaths due to All Causes</b>	<b>416.7</b>	<b>418.7</b>	<b>405.0</b>	<b>389.1</b>	<b>375.8</b>	<b>None set</b>

Monitoring the causes of death is important for planning prevention activities.

*Source: State of California, Department of Health Services and California Conference of Local Health Officers, County Health Status Profiles, 2000.*

\* *Crude, not age-adjusted case rate.*

\*\* *Case rate unreliable, relative standard error is greater than or equal to 23%.*

*The importance of well-defined goals and objectives to improve the health of the nation was recognized by the United States Public Health Services, resulting in their publication of Healthy People 2000: National Health Promotion and Disease Prevention Objectives for the Nation. These objectives are included in the above column entitled 'National 2000 Objective.'*

## Leading Causes of Death – by Cause

California Deaths per 100,000 Population - Age-Adjusted, Three-Year Averages

Cause of Death	1992-1994	1993-1995	1994-1996	1995-1997	1996-1998	Year 2000 National Objective
Heart Disease	103.9	101.3	100.6	96.9	93.9	100.0
All Cancers	118.0	116.2	115.9	113.3	110.3	130.0
Lung Cancer	32.8	32.2	31.8	31.0	30.0	42.0
Breast Cancer	20.0	19.7	19.7	18.9	18.3	20.6
Stroke	25.8	25.7	26.3	26.1	25.3	20.0
AIDS*	34.3	29.4	27.4	22.1	17.3	43.0
Drug-Related	7.8	7.9	8.0	7.9	7.5	3.0
Unintentional Injuries	27.1	26.6	26.6	25.7	24.2	29.3
Suicide	10.9	10.9	10.7	10.3	9.4	10.5
Firearm Injuries	17.0	16.3	15.0	13.5	11.6	11.6
Homicide	13.4	12.7	11.8	10.6	9.0	7.2
Motor Vehicle Crashes	13.4	13.2	13.2	12.4	11.4	14.2
<b>Deaths due to All Causes</b>	<b>461.7</b>	<b>453.9</b>	<b>454.2</b>	<b>439.9</b>	<b>425.7</b>	<b>None set</b>

Source: State of California, Department of Health Services and California Conference of Local Health Officers, County Health Status Profiles, 2000.

\* Crude, not age-adjusted case rate

The importance of well-defined goals and objectives to improve the health of the nation was recognized by the United States Public Health Services, resulting in their publication of Healthy People 2000: National Health Promotion and Disease Prevention Objectives for the Nation. These objectives are included in the above column entitled 'National 2000 Objective.'

*Quality of Life Indicator 69***Leading Causes of Death, by Ethnicity**

## Caucasian

<b>Cause of Death</b>	<b>1994</b>	<b>1995</b>	<b>1996</b>	<b>1997</b>	<b>1998</b>
Heart Disease	500	488	455	422	470
Cancer	360	352	324	352	298
Stroke	99	149	115	126	105
Chronic Obstructive Pulmonary Disease	77	87	97	84	84
Pneumonia / Influenza	87	82	103	82	84
Unintentional Injuries	43	48	49	52	42
Diabetes Mellitus	22	17	42	19	31
Suicide	32	24	30	19	27
Chronic Liver Disease Cirrhosis	22	25	22	20	23
Homicide	3	3	2	1	10
AIDS	33	22	18	8	9
All Other Causes / Residual	231	258	251	259	291
<b>Total</b>	<b>1,509</b>	<b>1,555</b>	<b>1,508</b>	<b>1,444</b>	<b>1,474</b>

Source: Santa Cruz Health Services Agency, Santa Cruz County Death Certificates, 1998.

## Leading Causes of Death, by Ethnicity

### Latino

<b>Cause of Death</b>	<b>1994</b>	<b>1995</b>	<b>1996</b>	<b>1997</b>	<b>1998</b>
Heart Disease	27	23	32	25	21
Cancer	24	23	22	39	21
Diabetes Mellitus	3	2	6	5	8
Stroke	11	7	6	6	6
Unintentional Injuries	16	19	10	12	5
Chronic Liver Disease Cirrhosis	6	3	4	8	4
Homicide	3	5	8	2	4
AIDS	2	3	0	5	4
Pneumonia / Influenza	3	3	2	5	3
Chronic Obstructive Pulmonary Disease	3	4	1	0	3
Suicide	4	4	2	6	1
All Other Causes / Residual	35	31	29	21	44
<b>Total</b>	<b>137</b>	<b>127</b>	<b>122</b>	<b>134</b>	<b>124</b>

Source: Santa Cruz Health Services Agency, Santa Cruz County Death Certificates, 1998.

*Quality of Life Indicator 69***Leading Causes of Death, by Ethnicity**

## African American

<b>Cause of Death</b>	<b>1994</b>	<b>1995</b>	<b>1996</b>	<b>1997</b>	<b>1998</b>
Cancer	4	2	5	2	4
Heart Disease	1	0	3	4	2
Stroke	0	0	1	1	1
Suicide	2	1	0	1	1
Chronic Obstructive Pulmonary Disease	1	0	0	1	0
AIDS	3	0	2	0	0
Unintentional Injuries	2	1	0	2	0
Diabetes Mellitus	1	1	1	0	0
Pneumonia / Influenza	0	0	0	1	0
Chronic Liver Disease Cirrhosis	0	0	0	1	0
Homicide	0	0	0	0	0
All Other Causes / Residual	0	1	2	0	1
<b>Total</b>	<b>14</b>	<b>6</b>	<b>14</b>	<b>13</b>	<b>9</b>

*Source: Santa Cruz Health Services Agency, Santa Cruz County Death Certificates, 1998.*

## Leading Causes of Death, by Ethnicity

Asian / Other (Includes American Indian)

Cause of Death	1994	1995	1996	1997	1998
Heart Disease	12	12	24	16	20
Cancer	12	4	8	11	6
Unintentional Injuries	6	2	0	3	6
Stroke	5	5	10	5	3
Pneumonia / Influenza	4	3	2	0	1
Diabetes Mellitus	2	3	4	0	1
Chronic Obstructive Pulmonary Disease	1	0	3	0	1
Chronic Liver Disease Cirrhosis	1	1	0	0	1
Suicide	0	0	2	0	0
Acquired Immune Deficiency Syndrome	1	0	0	0	0
Homicide	0	0	0	0	0
All Other Causes / Residual	5	7	6	14	9
<b>Total</b>	<b>49</b>	<b>37</b>	<b>59</b>	<b>49</b>	<b>48</b>

Source: Santa Cruz Health Services Agency, Santa Cruz County Death Certificates, 1998.

*Quality of Life Indicator 69***Leading Causes of Death, by Age Group**

## Children Under Age 1

<b>Cause of Death</b>	<b>1994</b>	<b>1995</b>	<b>1996</b>	<b>1997</b>	<b>1998</b>
Perinatal Period	8	3	7	12	7
Congenital Anomalies	12	7	11	1	2
Symptoms/ Ill defined	4	1	3	0	2
Heart	1	0	0	1	2
Unintentional Injuries	1	0	0	0	1
AIDS	1	0	0	0	0
All Other Causes	1	2	0	3	6
<b>Total</b>	<b>28</b>	<b>13</b>	<b>21</b>	<b>17</b>	<b>20</b>

As with injuries, monitoring the causes of death in children helps inform both the public and health practitioners about health risks and areas for prevention.

## Children Ages 1- 4

<b>Cause of Death</b>	<b>1994</b>	<b>1995</b>	<b>1996</b>	<b>1997</b>	<b>1998</b>
Cancer	1	0	1	0	1
Unintentional Injuries	0	0	1	2	1
Congenital Anomalies	2	0	0	0	1
AIDS	0	1	0	0	0
Homicide	0	0	2	0	0
All Other Causes	1	0	0	0	2
<b>Total</b>	<b>4</b>	<b>1</b>	<b>4</b>	<b>2</b>	<b>5</b>

Source: State of California, Department of Health Services, Death Records, 1998.

## Leading Causes of Death, by Age Group

### Children Ages 5-14

Cause of Death	1994	1995	1996	1997	1998
Unintentional Injuries	2	2	1	0	3
Pneumonia & Influenza	0	1	1	1	0
Cancer	1	3	0	0	0
Congenital Anomalies	0	2	0	1	0
Aids	0	0	0	1	0
Homicide	0	0	1	0	0
All Other Causes	1	2	1	2	3
<b>Total</b>	<b>4</b>	<b>10</b>	<b>4</b>	<b>5</b>	<b>6</b>

### Children Ages 15-19

Cause of Death	1994	1995	1996	1997	1998
Unintentional Injuries	2	5	2	6	4
Homicide	1	1	2	1	2
Suicide	1	0	1	2	2
Cancer	0	0	1	1	0
AIDS	0	0	0	0	1
All Other Causes	2	1	0	3	2
<b>Total</b>	<b>6</b>	<b>7</b>	<b>6</b>	<b>13</b>	<b>11</b>

Source: State of California, Department of Health Services, Death Records, 1998.

*Quality of Life Indicator 69***Deaths by Age Group and Ethnicity**

## Number of Deaths per Age Group - Caucasian

Age Group	1995	1996	1997	1998	% Change
<1	6	8	8	5	-37.5
1-4	1	2	2	5	150.0
5-14	6	2	3	4	33.3
15-19	4	2	8	4	-50.0
20-24	4	10	3	8	166.7
25-34	33	27	18	17	-5.6
35-44	64	69	48	53	10.4
45-54	94	94	91	85	-6.6
55-64	113	94	96	130	35.4
65 +	1,229	1,187	1,166	1,162	-0.3
<b>Total Number of Deaths</b>	<b>1,554</b>	<b>1,495</b>	<b>1,443</b>	<b>1,473</b>	<b>2.1</b>

## Number of Deaths per Age Group - Latino

Age Group	1995	1996	1997	1998	% Change
<1	7	11	8	13	62.5
1-4	0	2	0	0	0.0
5-14	4	2	1	2	100.0
15-19	3	4	5	5	0.0
20-24	3	1	4	3	-25.0
25-34	16	6	10	14	40.0
35-44	16	14	11	12	9.1
45-54	13	10	16	11	-31.3
55-64	9	13	17	15	-11.8
65 +	56	59	62	49	-21.0
<b>Total Number of Deaths</b>	<b>127</b>	<b>122</b>	<b>134</b>	<b>124</b>	<b>-7.5</b>

Source: State of California, Department of Health Services, Vital Statistics Section, 2000.

## Deaths by Age Group and Ethnicity

Deaths as a Percent of Population per Age Group - Caucasian, *Three Year Averages*

Age Group	1993-1995	1994-1996	1995-1997	1996-1998
<1	.60	.54	.44	.42
1-4	.02	.03	.02	.04
5-14	.02	.02	.02	.01
15-19	.03	.03	.05	.04
20-24	.05	.06	.06	.07
25-34	.12	.12	.10	.08
35-44	.19	.19	.18	.17
45-54	.35	.34	.32	.30
55-64	.92	.80	.75	.75
65+	5.67	5.54	5.08	4.97

Deaths as a Percent of Population per Age Group - Latino, *Three Year Averages*

Age Group	1993-1995	1994-1996	1995-1997	1996-1998
<1	.61	.62	.52	.64
1-4a	.005	.009	.01	.01
5-14	.02	.02	.02	.01
15-19	.05	.07	.10	.11
20-24	.11	.09	.06	.06
25-34	.11	.11	.10	.10
35-44	.13	.16	.17	.14
45-54	.29	.28	.29	.26
55-64	.61	.58	.60	.65
65+	2.76	2.69	2.49	2.25

Source: State of California, Department of Health Services, Vital Statistics Section, 2000.

