

Public Safety Issues

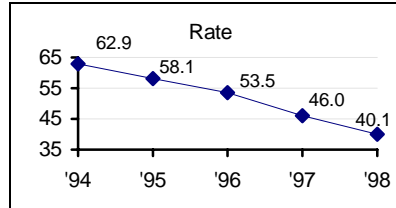
Community Goals

By the Year 2004, crime within Santa Cruz County will continue to decrease, and residents will have increased confidence in their personal safety at home and in the community.

By the Year 2004, children in Santa Cruz County will live in safer families and communities.

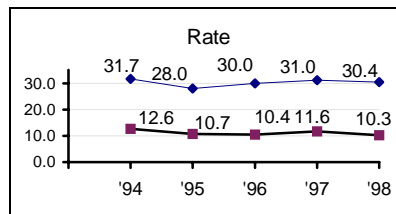
Benchmarks

Crime Rate



✓ Crime rate per 1,000 people

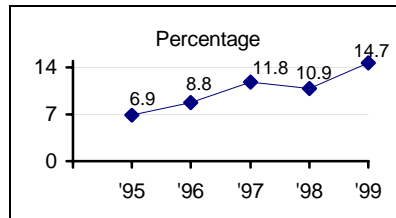
Juvenile Crime Rate



✓ Juvenile Crime Rate

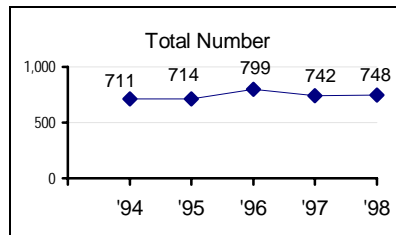
◆ Misdemeanors
■ Felonies

Fear of Crime



✓ Respondents who reported that they are not at all concerned about crime in Santa Cruz County

Family Violence



✓ Domestic violence calls for assistance

Community Quotes:

“Safety is not just a matter for the police. Citizens can do so much to promote the safety of our neighborhoods.”

“Crime is often glamorized in our society. Children need to learn about the consequences of criminal behavior.”

Public Safety Summary

Crime in the county decreased by 12.8 percent in 1998. This is the fifth consecutive year that the number of crimes and the crime rate declined. Since 1994, the 8 major crimes tracked for this report have decreased by nearly 5,000 – representing *at least* 5,000 fewer victims of crime in Santa Cruz County.

After an increase in 1997, juvenile arrests for 1998 show a decrease. The change in misdemeanor arrests is very small, but in felony arrests, there is nearly a 10 percent decrease. For drug-related offenses, however, the numbers climbed. Both felony and misdemeanor drug arrests of juveniles increased by over 16 percent, and juvenile DUI arrests went up 23.5 percent compared to a 4.6% increase statewide.

More respondents this year said they were “not at all” concerned about crime (14.7 percent compared to 10.9 percent last year). But the percentages vary considerably when looking at the location and ethnicity of respondents. Regionally, similar percentages (33.2 percent and 32.2 percent respectively) of North County and San Lorenzo Valley respondents said they were very concerned about crime, but in South County, the percentage was 52.6. The gap was similar when the question was analyzed by ethnicity – with 35.9 percent of Caucasian participants and 57.3 of Latino respondents saying they were very concerned about crime.

The vast majority of Santa Cruz County residents (97.8 percent) report feeling very or somewhat safe in their neighborhoods. Four out of five law enforcement agencies improved their average response times for Priority 1,2 and 3 calls in 1998. Possibly due to faster response times, thirty seven percent of survey respondents stated they thought law enforcement was very effective, an upward trend from last year.

Despite decreasing crime rates, fewer residents are feeling safe at home. In fact, over 87 percent of the respondents are at least somewhat concerned about family violence, although the number of domestic violence calls for service and cases with weapons has remained steady the last two years. Regionally, 63 percent of both North County and South County residents stated they were very concerned about interpersonal violence; in San Lorenzo Valley, the percentage expressing concern about interpersonal violence was 52.5 percent. Both elder and child abuse/neglect cases increased between 1997 and 1998. The public is possibly more aware of the family violence issues due to the amount of media attention it has received recently and potentially more concerned, suggesting that prevention and intervention programs would be favorably received.

Special thanks to April Bullock from the Criminal Justice Council for contributing to this summary.

*Quality of Life
Indicator 64*

Definition of Crimes

Santa Cruz County FBI Crime Index:

Homicide: the willful (non-negligent) killing of one human being by another. Murder and non-negligent manslaughter are included in this definition.

Rape: the carnal knowledge of a female forcibly and against her will.

Robbery: the taking or attempting to take anything of value from the custody, care, or control of a person or persons by force or threat of force or violence and/or by creating fear in the victim.

Aggravated Assault: an unlawful attack or attempted attack by one person upon another for the purpose of inflicting severe or aggravated bodily injury. This type of assault is usually accompanied by the use of a weapon or by means likely to produce death or great bodily harm.

Burglary: the unlawful entry of a structure to commit a felony or a theft.

Motor Vehicle Theft: the theft or attempted theft of a motor vehicle.

Larceny: the unlawful taking, carrying, leading, or riding away of property from the possession of another (except embezzlement, fraud, forgery, and worthless checks).

Arson: any willful or malicious burning or attempt to burn, with or without intent to defraud, a dwelling house, public building, motor vehicle or aircraft, personal property of another, etc.

Source: California Criminal Justice Profile, Criminal Justice Glossary, 1998.

*Quality of Life
Indicator 64*

Crime Rate

The specific crimes that are tracked are used to determine the rise or fall in the crime rate both locally and nation-wide. Since 1994, the total crime rate in Santa Cruz County has decreased by thirty-six percent to 40.1, dropping below the California total crime rate of 43.1.

✓ **Benchmark Indicator**

Santa Cruz County

Violent Crimes	1994	1995	1996	1997	1998	% Change
Homicide	6	8	10	4	9	125.0
Rape	84	77	66	69	58	-15.9
Robbery	305	286	289	249	188	-24.5
Aggravated Assault	1,282	1,386	1,375	955	1,139	19.3
Total Violent Crimes	1,677	1,757	1,740	1,277	1,394	9.2
Violent Crime Rate	7.0	7.3	7.2	5.2	5.6	7.7

Property Crimes	1994	1995	1996	1997	1998	% Change
Burglary	2,636	2,486	2,194	1,901	1,629	-14.3
Larceny	9,923	8,874	8,177	7,516	6,422	-14.6
Motor Vehicle Theft	680	726	811	506	540	6.7
Arson	90	97	73	87	66	-24.1
Total Property Crimes	13,329	12,183	11,255	10,012	8,657	-13.5
Property Crime Rate	55.9	50.8	46.3	40.8	34.6	-15.2

Total Crimes	15,006	13,940	12,995	11,289	10,051	-11.0
Total Population	238,450	240,000	243,000	245,400	250,350	2.0
County Crime Rate	62.9	58.1	53.5	46.0	40.1	-12.8
State Crime Rate	61.9	58.2	52.0	48.5	43.1	-11.1

Source: California Criminal Justice Profile, Department of Finance Population Estimates, 1998.

Note: The crime rate is calculated by dividing the number of reported crimes by the total population and then multiplying the result by 100,000. Due to the smaller populations of Santa Cruz County Cities, the result has been multiplied by 1,000 instead of 100,000 to arrive at the crime rate shown above. The county totals include the California Highway Patrol, U.C. Santa Cruz, Santa Cruz Mountains Department of Parks and Recreation and the Union Pacific Railroad.

*Quality of Life
Indicator 64*

Crime Rate (Continued)

City of Capitola

Violent Crime	1994	1995	1996	1997	1998	% Change
Homicide	0	0	1	0	0	0.0
Rape	2	1	1	2	2	0.0
Robbery	9	12	13	12	9	-25.0
Aggravated Assault	77	45	46	34	43	26.5
Total Violent Crimes	88	58	61	48	54	12.5
Violent Crime Rate	8.5	5.4	5.6	4.4	4.9	11.4

Property Crime	1994	1995	1996	1997	1998	% Change
Burglary	75	84	85	63	43	-31.7
Larceny	1,041	1,029	984	849	746	-12.1
Motor Vehicle Theft	39	42	42	29	18	-37.9
Arson	1	5	2	1	1	0.0
Total Property Crimes	1,156	1,160	1,113	942	808	-14.2
Property Crime Rate	111.2	108.4	103.1	86.8	73.5	-15.3

Total Crimes	1,244	1,218	1,174	990	862	-12.9
Population	10,400	10,700	10,800	10,850	11,000	1.4
Capitola Crime Rate	119.6	113.8	108.7	91.2	78.4	-14.0
County Crime Rate	62.9	58.1	53.5	46.0	40.1	-12.8
State Crime Rate	61.9	58.2	52.0	48.5	43.1	-11.1

Source: California Criminal Justice Profile, Department of Finance Population Estimates, 1998.

Note: The crime rate is calculated by dividing the number of reported crimes by the total population and then multiplying the result by 100,000. Due to the smaller populations of Santa Cruz County Cities, the result has been multiplied by 1,000 instead of 100,000 to arrive at the crime rate shown above.

*Quality of Life
Indicator 64*

Crime Rate (Continued)

City of Santa Cruz

Violent Crime	1994	1995	1996	1997	1998	% Change
Homicide	3	4	2	1	2	100.0
Rape	20	14	12	19	7	-63.2
Robbery	130	104	105	85	68	-20.0
Aggravated Assault	347	363	460	404	322	-20.3
Total Violent Crimes	500	485	579	509	399	-21.6
Violent Crime Rate	9.7	9.3	11.0	9.6	7.3	-24.0

Property Crime	1994	1995	1996	1997	1998	% Change
Burglary	756	604	601	479	343	-28.4
Larceny	3,294	2,755	2,761	2,371	1,977	-16.6
Motor Vehicle Theft	188	229	232	237	156	-34.2
Arson	20	18	27	37	25	-32.4
Total Property Crimes	4,258	3,606	3,621	3,124	2,503	-19.9
Property Crime Rate	82.7	69.2	68.7	58.8	45.7	-22.3

Total Crimes	4,758	4,091	4,200	3,633	2,902	-20.1
Population	51,500	52,100	52,700	53,100	54,800	3.2
Santa Cruz City Crime Rate	92.4	78.5	79.7	68.4	53.0	-22.5
County Crime Rate	62.9	58.1	53.5	46.0	40.1	-12.8
State Crime Rate	61.9	58.2	52.0	48.5	43.1	-11.1

Source: California Criminal Justice Profile, Department of Finance Population Estimates, 1998.

Note: The crime rate is calculated by dividing the number of reported crimes by the total population and then multiplying the result by 100,000. Due to the smaller populations of Santa Cruz County Cities, the result has been multiplied by 1,000 instead of 100,000 to arrive at the crime rate shown above.

*Quality of Life
Indicator 64*

Crime Rate (Continued)

City of Scotts Valley

Violent Crime	1994	1995	1996	1997	1998	% Change
Homicide	0	0	0	0	0	0.0
Rape	1	1	1	3	2	-33.3
Robbery	5	2	3	3	3	0.0
Aggravated Assault	24	18	23	16	25	56.3
Total Violent Crimes	30	21	27	22	30	36.4
Violent Crime Rate	3.2	2.2	2.7	2.2	2.8	27.3

Property Crime	1994	1995	1996	1997	1998	% Change
Burglary	90	82	83	59	36	-39.0
Larceny	370	363	319	262	247	-5.7
Motor Vehicle Theft	22	16	12	14	4	-71.4
Arson	11	7	8	6	7	16.7
Total Property Crimes	493	468	422	341	294	-13.8
Property Crime Rate	52.4	48.6	43.0	33.9	27.9	-17.7

Total Crimes	523	489	449	363	324	-10.7
Population	9,400	9,625	9,825	10,050	10,550	5.0
Scotts Valley Crime Rate	56.5	50.8	45.7	35.8	30.7	-14.2
County Crime Rate	62.9	58.1	53.5	46.0	40.1	-12.8
State Crime Rate	61.9	58.2	52.0	48.5	43.1	-11.1

Source: California Criminal Justice Profile, Department of Finance Population Estimates, 1998.

Note: The crime rate is calculated by dividing the number of reported crimes by the total population and then multiplying the result by 100,000. Due to the smaller populations of Santa Cruz County Cities, the result has been multiplied by 1,000 instead of 100,000 to arrive at the crime rate shown above.

*Quality of Life
Indicator 64*

Crime Rate (Continued)

City of Watsonville

Violent Crime	1994	1995	1996	1997	1998	% Change
Homicide	1	1	6	0	3	0.0
Rape	14	18	10	11	17	54.5
Robbery	83	98	87	93	63	-32.3
Aggravated Assault	286	412	455	375	388	3.5
Total Violent Crimes	384	529	558	479	471	-1.7
Violent Crime Rate	11.6	15.8	16.3	13.1	12.7	-3.1

Property Crime	1994	1995	1996	1997	1998	% Change
Burglary	357	359	378	393	305	-22.4
Larceny	1,839	1,747	1,383	1,602	1,250	-22.0
Motor Vehicle Theft	174	189	154	215	149	-30.7
Arson	8	9	7	14	6	-57.1
Total Property Crimes	2,378	2,304	1,922	2,226	1,710	-23.2
Property Crime Rate	72.1	69.0	56.1	60.8	46.0	-24.3

Total Crimes	2,762	2,833	2,480	2,703	2,181	-19.3
Population	33,000	33,400	34,250	36,632	37,150	1.4
Watsonville Crime Rate	83.7	84.8	72.4	73.8	58.7	-20.5
County Crime Rate	62.9	58.1	53.5	46.0	40.1	-12.8
State Crime Rate	61.9	58.2	52.0	48.5	43.1	-11.1

Source: California Criminal Justice Profile, Department of Finance. Population Estimates, 1998.

Note: The crime rate is calculated by dividing the number of reported crimes by the total population and then multiplying the result by 100,000. Due to the smaller populations of Santa Cruz County Cities, the result has been multiplied by 1,000 instead of 100,000 to arrive at the crime rate shown above.

*Quality of Life
Indicator 64*

Crime Rate (Continued)

Unincorporated Areas (Sheriff's Department)

Violent Crime	1994	1995	1996	1997	1998	% Change
Homicide	2	3	1	3	4	33.3
Rape	46	40	43	34	28	-17.6
Robbery	77	69	68	56	44	-21.4
Aggravated Assault	536	513	391	406	351	-13.5
Total Violent Crimes	661	625	503	499	427	-14.4
Violent Crime Rate	5.0	4.7	3.7	3.7	3.1	-16.2
<hr/>						
Property Crime	1994	1995	1996	1997	1998	% Change
Burglary	1,204	1,268	964	907	851	-6.2
Larceny	2,812	2,567	2,730	2,432	1,922	-21.1
Motor Vehicle Theft	22	1	15	11	11	0.0
Arson	49	49	29	29	23	-20.7
Total Property Crimes	4,087	3,885	3,738	3,379	2,807	-16.9
Property Crime Rate	30.5	29.0	27.6	25.1	20.5	-18.3
<hr/>						
Total Crimes	4,748	4,510	4,241	3,878	3,234	-16.6
Population	134,150	134,000	135,400	134,800	136,800	1.5
Unincorporated Crime Rate	35.6	33.6	31.3	28.8	23.7	-17.7
County Crime Rate	62.9	58.1	53.5	46.0	40.1	-12.8
State Crime Rate	61.9	58.2	52.0	48.5	43.1	-11.1

Source: California Criminal Justice Profile, Department of Finance Population Estimates, 1998.

Note: The crime rate is calculated by dividing the number of reported crimes by the total population and then multiplying the result by 100,000. Due to the smaller populations of Santa Cruz County Cities, the result has been multiplied by 1,000 instead of 100,000 to arrive at the crime rate shown above. Unincorporated areas are covered by the Santa Cruz County Sheriff's Office and include all areas except the cities of Capitola, Santa Cruz, Scotts Valley, and Watsonville.

*Quality of Life
Indicator 65*

Jail Population Characteristics

As the number of people under criminal justice supervision continues to rise, more attention is being given to decreasing recidivism. In Santa Cruz County, eighty-five percent of current inmates are repeat offenders.

Average Daily Jail Population Count

Facility	1995	1996	1997	1998	% Change
Water Street Facility	365	341	373	375	0.5
Blaine Street Facility	19	21	28	33	17.9
Rountree Lane Facilities	124	176	200	218	9.0

Number of Repeat Offenders

Prisoner Type	1995	1996	1997	1998	% Change
Total Inmates	7,090	7,154	7,679	7,141	-7.0
Repeat Offenders	6,057	6,111	6,670	6,079	-8.9
Percent of Repeat Offenders	85.0	86.0	87.0	85.0	-2.3

Source: Santa Cruz County Sheriff's Office, Sheriff's Detention Bureau, 1998.

Prisoners by Ethnicity, Water Street Jail Facility

Ethnicity	1994	1995	1996	1997	1998	% Change
Caucasian	3,464	3,613	3,638	3,665	3,765	2.7
Hispanic	2,692	2,946	3,009	2,590	2,903	12.1
African American	409	424	419	343	371	8.2
Asian	63	38	25	17	24	41.2
American Indian	36	38	44	36	45	25.0
Filipino	9	9	9	10	15	50.0
Other	14	22	10	9	21	133.3
Total	6,687	7,090	7,154	6,670	7,144	7.1

Source: Water Street Jail, 1998.

*Quality of Life
Indicator 65*

Jail Population Characteristics (Continued)

Alcohol Related Bookings

Water Street Jail Facility	1995	1996	1997	1998	% Change
Alcohol Related Bookings	8,206	6,734	9,702	6,921	-28.7
Total Bookings	15,203	15,777	16,583	16,865	17.0
Percent of Total Bookings	54.0	42.7	58.5	41.0	-29.9

Source: Santa Cruz County Sheriff's Office, Water Street Jail, 1998.

Note: The Water Street Facility figure includes pre-trial sentenced men and women; Blaine Street Facility figure includes sentenced men and women; and Roundtree Lane Facility figure includes sentenced men in medium and minimum security.

*Quality of Life
Indicator 66*

Benchmark Snapshot

Juvenile Crime Rate

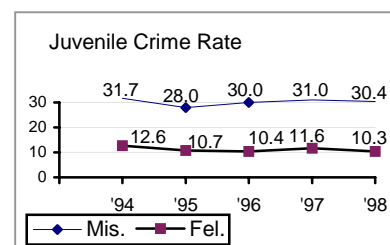
Since 1994, many of the following agencies have reported a decrease in total juvenile arrests despite an increase in juvenile population. This is evidenced in an 8.1% decrease in overall juvenile crime rate.

Santa Cruz County

Misdemeanor	1994	1995	1996	1997	1998	% Change
Capitola Police Department	439	392	319	269	286	6.3
Santa Cruz Police Department	466	351	422	482	451	-6.4
Santa Cruz County Sheriff's Office	527	568	706	829	816	-1.6
Scotts Valley Police Department	206	109	128	91	73	-19.8
Watsonville Police Department	272	293	285	279	316	13.3
Total Juvenile Misdemeanor Arrests	1,910	1,713	1,860	1,950	1,942	-0.4
Juvenile Population	60,202	61,152	61,965	62,984	63,948	1.5
Juvenile Misdemeanor Crime Rate	31.7	28.0	30.0	31.0	30.4	-1.9

Felony	1994	1995	1996	1997	1998	% Change
Capitola Police Department	83	44	28	41	33	-19.5
Santa Cruz Police Department	188	184	145	131	122	-6.9
Santa Cruz County Sheriff's Office	233	234	293	356	325	-8.7
Scotts Valley Police Department	119	43	40	36	16	-55.6
Watsonville Police Department	133	151	141	167	165	-1.2
Total Juvenile Felony Arrests	756	656	647	731	661	-9.6
Juvenile Population	60,202	61,152	61,965	62,984	63,948	1.5
Juvenile Felony Crime Rate	12.6	10.7	10.4	11.6	10.3	-11.2

Source: All Jurisdictions, California Criminal Justice Profile, 1998. Population figures are from the Department of Finance, Race / Ethnic Population with Age and Sex Detail report, 1998.



*Quality of Life
Indicator 66*

Juvenile Crime Rate (Continued)

Totals	1994	1995	1996	1997	1998	% Change
Total Juvenile Arrests	2,666	2,369	2,507	2,681	2,603	-2.9
Juvenile Population	60,202	61,152	61,965	62,984	63,948	1.5
Total Juvenile Crime Rate	44.3	38.7	40.5	42.6	40.7	-4.5

Source: All Jurisdictions, California Criminal Justice Profile, 1998. Population figures are from the Department of Finance, Race / Ethnic Population with Age and Sex Detail report, 1998.

Note: The crime rate is calculated by dividing the number of reported crimes by the total population and then multiplying by 100,000. Due to the smaller population of Santa Cruz County, the result has been multiplied by 1,000 instead of 100,000 to arrive at the crime rates shown above. Juvenile population includes all ages from 0 – 17.

*Quality of Life
Indicator 66*

Juvenile Arrests

This indicator measures the number of felony and misdemeanor arrests to persons under the age of 18 by age and by ethnicity.

Felony and Misdemeanor Crimes

Ethnicity	1994	1995	1996	1997	1998	% Change
Caucasian	1,403	1,273	1,365	1,524	1,581	3.7
Hispanic	957	948	958	1,016	1,000	-1.6
African American	98	109	120	92	92	0.0
Other	34	39	64	49	54	10.2

Felony and Misdemeanor Crimes

Age	1994	1995	1996	1997	1998	% Change
10 and under	30	18	22	42	20	-52.4
11	34	22	48	34	33	-2.9
12	141	106	114	81	93	14.8
13	243	228	361	221	204	-7.7
14	405	379	306	404	379	-6.2
15	493	529	517	540	534	-1.1
16	858	605	619	638	697	9.2
17	558	604	654	721	767	6.4

Source: California Criminal Justice Profile, 1998.

*Quality of Life
Indicator 67*

Juvenile Hall Admissions

The trends of Juvenile Hall admissions in Santa Cruz County show that average monthly admissions have increased by 12% in the past eight years.

Number of Yearly Admissions, Santa Cruz County 1990-1998

Year	Annual Admissions	Average Monthly Admissions
1990	1,405	117
1991	1,559	130
1992	1,488	124
1993	1,568	131
1994	1,539	128
1995	1,530	129
1996	1,751	146
1997	1,593	133
1998	1,576	131

Number of Admissions, by Gender

Year	Male		Female		Total
	Number	Percent	Number	Percent	
1990	1,129	80.4	276	19.6	1,405
1991	1,259	80.8	300	19.2	1,559
1992	1,218	81.9	270	18.1	1,488
1993	1,285	82.0	283	18.0	1,568
1994	1,269	82.5	270	17.5	1,539
1995	1,249	80.6	301	19.4	1,550
1996	1,395	79.7	356	20.3	1,751
1997	1,234	77.5	359	22.5	1,593
1998	1,251	79.4	325	20.6	1,576

Source: California Youth Authority, *Statewide Juvenile Hall Reports, 1998*.

*Quality of Life
Indicator 67*

Juvenile Hall Admissions (Continued)

Number of Yearly Admissions, by Ethnicity, Selected Years

Year	Caucasian		African-American		Latino / Hispanic		Other	
1990	14,228	63.7	303	1.4	6,902	30.9	908	4.1
1995	15,674	64.3	334	1.4	7,485	30.7	876	3.6
1998	16,908	65.5	379	1.5	8,546	33.1	985	3.8
% Change	7.9	1.9	13.5	7.1	14.2	7.8	12.4	5.6

Source: Santa Cruz County Probation Department, 1998.

*Quality of Life
Indicator 68*

Police Officers Per Capita

The ratio of full time officers to population is an important indicator of access to public safety resources.

Santa Cruz County

Agency	Number of Sworn Officers				Officers Per Capita			
	1995	1996	1997	1998	1995	1996	1997	1998
Capitola Police Department	22	22	22	23	1 per 486	1 per 491	1 per 493	1 per 480
Santa Cruz Police Department	84	91	93	94	1 per 620	1 per 579	1 per 571	1 per 583
Santa Cruz County Sheriff (Unincorporated areas)	136	141	146	150	1 per 986	1 per 960	1 per 923	1 per 912
Scotts Valley Police Department	21	21	21	21	1 per 458	1 per 468	1 per 479	1 per 502
Watsonville Police Department	48	54	57	57	1 per 696	1 per 634	1 per 642	1 per 651

Source: All Jurisdictions, Department of Finance Population Estimates, 1998.

Note: The officer per capita figure is calculated by dividing the total number of sworn officers in a given jurisdiction by the total population in that jurisdiction. Officer count is typically performed during the month of October.

*Quality of Life
Indicator 69*

Police Response by Jurisdiction

Response times are important, especially for crimes in progress. These statistics are for overall response times that include all calls for service, both emergency and non-emergency.

Average Response Time

Agency	1994	1995	1996
Capitola Police Department	3.0	3.0	2.4
Santa Cruz Police Department	5.5	5.5	4.7
Santa Cruz County Sheriff's Office	-	-	8.0
Scotts Valley Police Department	3.0	3.0	2.1
Watsonville Police Department	6.2	6.2	5.1

Source: All Jurisdictions, Police Departments, County Sheriff's Office, 1996.

Note: Response time is defined as the average time (in minutes) it takes for an officer to arrive at the scene after receiving a call from dispatch. Response time figures reflect a thirty-day average for all law enforcement agencies, except the Scotts Valley Police Department, which uses a yearly average.

Average Response Time, 1997 and 1998

Agency	Priority 1		Priority 2		Priority 3	
	1997	1998	1997	1998	1997	1998
Capitola Police Department	4:07	3:45	7:08	6:38	12:03	12:18
Santa Cruz Police Department	4:49	3:59	8:54	7:24	14:15	11:54
Santa Cruz County Sheriff's Office	12:01	8:41	18:34	16:58	25:40	25:12
Scotts Valley Police Department	3:00	2:5	7:00	-	-	-
Watsonville Police Department	5:01	3:57	10:52	8:57	18:21	17:56

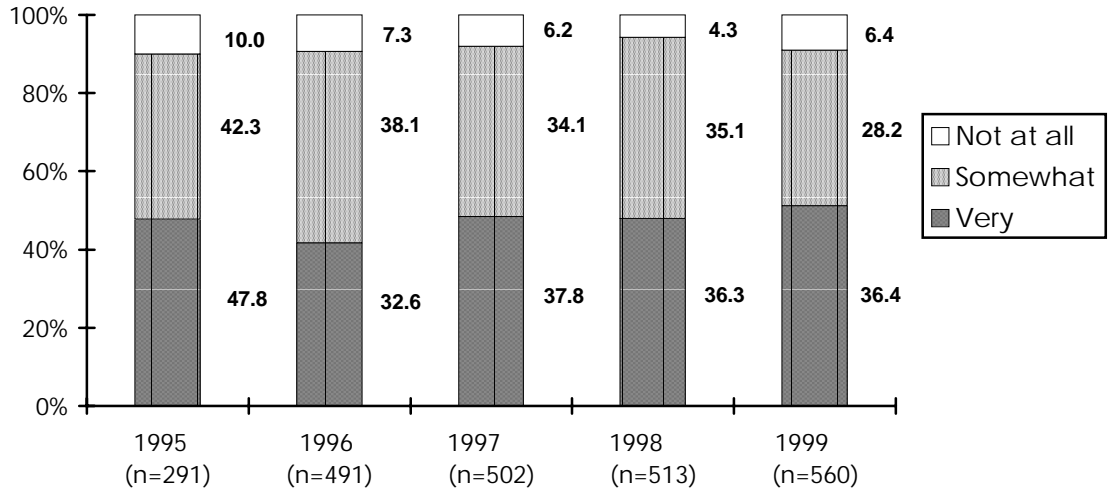
Source: Santa Cruz Consolidated Emergency Communications Center and Scotts Valley Police Department, 1998.

Note: Response times for 1997 were calculated by Santa Cruz Consolidated Emergency Communications Center. All Jurisdictions (except Scotts Valley Police Department) use this agency as their dispatching system. Priority 1 is defined as a call for assistance that involves a person or an accident. Priority 2 involves property crimes and Priority 3 calls are informational.

*Quality of Life
Indicator 69*

☎ Police Response

How effective do you think local police response is?



Source: Santa Cruz Community Assessment Project, Telephone Survey.

Note: Due to low numbers the “don’t know” response is not included in the graph.

*Quality of Life
Indicator 69*

Police Response (Continued) **Demographic Comparisons**

Percent of respondents who think local police response is “very effective”:

Demographics	1998	1999
Caucasian	36.4	35.1
Latino	38.0	47.2
North County	37.1	36.4
South County	38.5	42.2
San Lorenzo Valley	29.8	23.3
18-24	-	36.6
25-44	-	35.0
45-64	-	41.6
65 and older	-	29.6
Male	-	37.6
Female	-	36.4
Under \$15,000 per year	-	42.0
\$15,000 - \$34,999 per year	-	35.7
\$35,000 - \$64,999 per year	-	33.1
Over \$65,000 per year	-	40.8
Total Respondents	513	560

Source: Santa Cruz Community Assessment Project, Telephone Survey.

*Quality of Life
Indicator 70*

Emergency Bilingual Staff

Bilingual staff are essential in a community that serves many monolingual Spanish-speaking people.

Number of Bilingual Staff per Law Enforcement Agency

Agency	1996	1997	1998	1999	% Change
Capitola Police Department	4	3	6	2	-66.7
Santa Cruz Police Department	9	10	9	10	11.1
Santa Cruz County Sheriff's Office	53	53	57	57	0.0
Scotts Valley Police Department	4	4	3	4	33.3
Watsonville Police Department	14	14	17	16	-5.9

Source: All Jurisdictions, Police Departments, County Sheriff's Office, 1999.

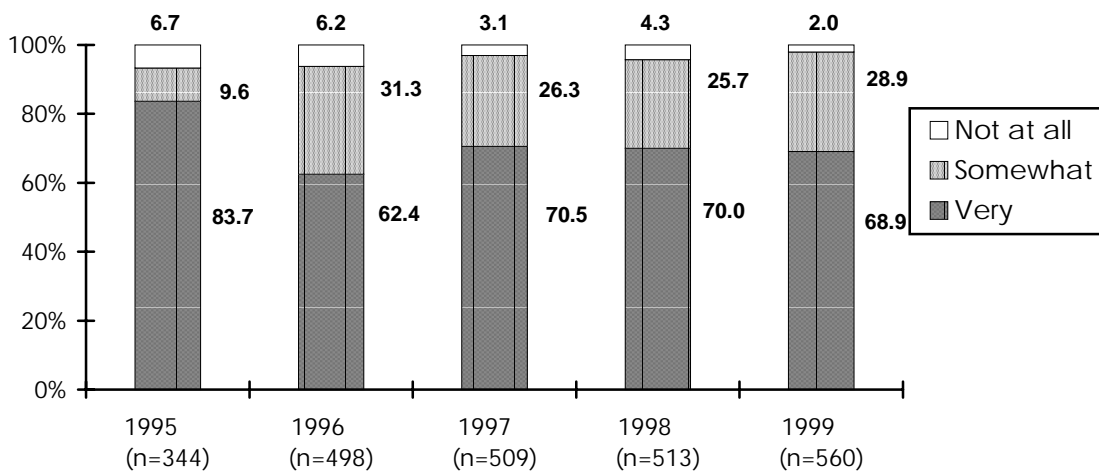
Note: Both the Santa Cruz and Scotts Valley Police Department utilize a 24-hour AT&T language line that provides interpretive service in any language via the telephone.

*Quality of Life
Indicator 71*

📞 Neighborhood Safety

Measuring people’s perception of safety in their community has become a key indicator for measuring the success of community-oriented policing.

How safe would you say you feel in your neighborhood?



Source: Santa Cruz Community Assessment Project, Telephone Survey.

Note: Due to low numbers the “don’t know” response is not included in the graph.

*Quality of Life
Indicator 71*

 **Neighborhood Safety (Continued)**
Demographic Comparisons

Percent of respondents who feel “very safe” in their neighborhood:

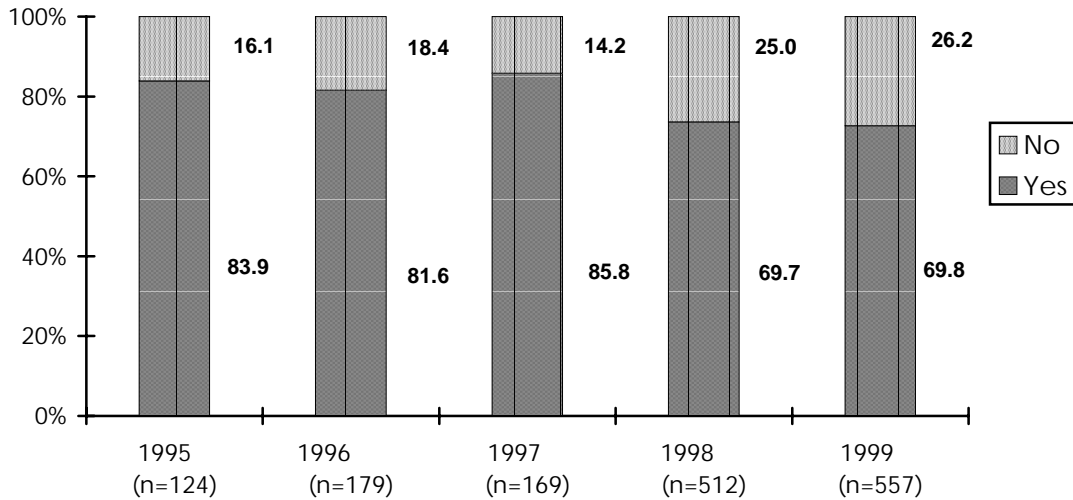
Demographics	1998	1999
Caucasian	76.1	71.0
Latino	51.1	58.4
North County	68.3	70.9
South County	66.2	61.8
San Lorenzo Valley	81.9	75.0
18-24	-	74.4
25-44	-	66.4
45-64	-	69.1
65 and older	-	70.4
Male	-	72.8
Female	-	66.0
Under \$15,000	-	66.7
\$15,000 - \$34,999	-	69.6
\$35,000 - \$64,999	-	73.6
Over \$65,000	-	67.8
Total Respondents	513	560

Source: Santa Cruz Community Assessment Project, Telephone Survey.

*Quality of Life
Indicator 71*

Neighborhood Safety (Continued)

Do children have a safe place to play in your neighborhood?



Source: Santa Cruz Community Assessment Project, Telephone Survey.

Note: Due to low numbers the "don't know" response is not included in the graph.

In 1998 this question was asked of the general population and not just parents. Therefore the total number of respondents increased significantly.

*Quality of Life
Indicator 71*

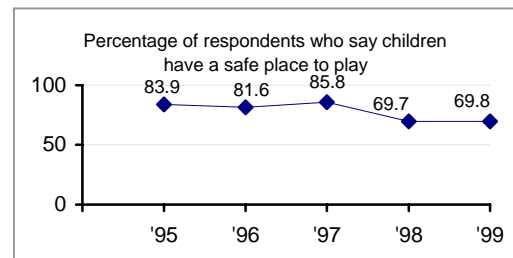
**☎ Neighborhood Safety (Continued)
Demographic Comparisons**

Percent of respondents indicating that children have a safe place to play in their neighborhood:

Demographics	1998	1999
Caucasian	71.1	68.5
Latino	65.2	75.0
North County	67.7	72.7
South County	71.3	65.1
San Lorenzo Valley	71.3	65.0
18-24	-	76.5
25-44	-	73.3
45-64	-	67.6
65 and older	-	58.0
Male	-	75.8
Female	-	67.2
Under \$15,000	-	73.5
\$15,000 - \$34,999	-	62.5
\$35,000 - \$64,999	-	74.0
Over \$65,000	-	71.5
Total Respondents	512	557

Source: Santa Cruz Community Assessment Project, Telephone Survey.

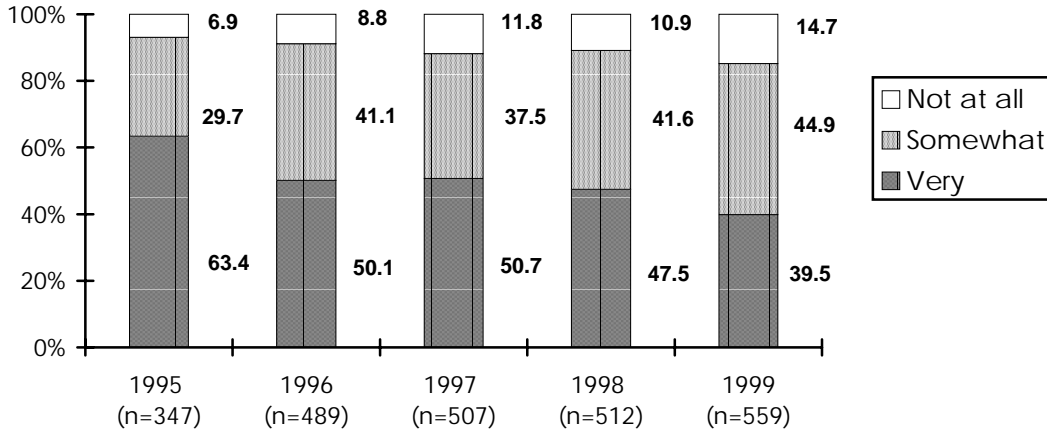
Benchmark Snapshot



Quality of Life
Indicator 72

 **Concern about Crime**

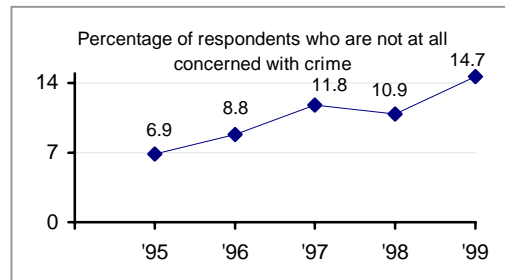
How concerned are you about crime in Santa Cruz County?



Source: Santa Cruz Community Assessment Project, Telephone Survey.

Note: Due to low numbers the “don’t know” response is not included in the graph.

Benchmark Snapshot



*Quality of Life
Indicator 72*

 **Concern about Crime (Continued)**
Demographic Comparisons

Percent of respondents who are “very concerned” about crime in Santa Cruz County:

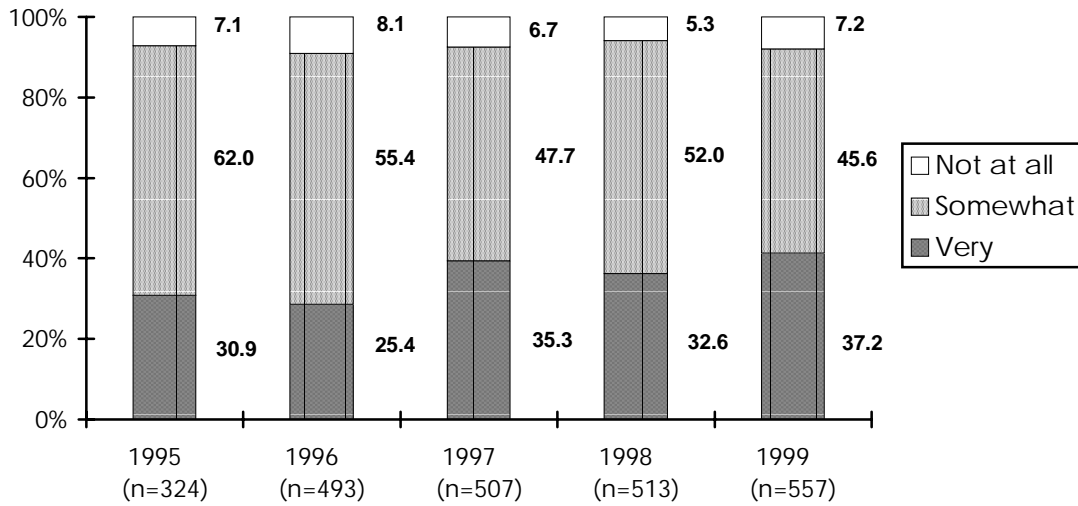
Demographics	1998	1999
Caucasian	42.6	35.9
Latino	67.0	57.3
North County	44.2	33.2
South County	54.6	52.6
San Lorenzo Valley	40.4	32.2
18-24	-	22.0
25-44	-	40.7
45-64	-	43.8
65 and older	-	44.4
Male	-	35.8
Female	-	41.5
Under \$15,000 per year	-	37.7
\$15,000 - \$34,999 per year	-	49.1
\$35,000 - \$64,999 per year	-	36.0
Over \$65,000 per year	-	36.2
Total Respondents	512	559

Source: Santa Cruz Community Assessment Project, Telephone Survey.

*Quality of Life
Indicator 73*

☎ Law Enforcement Effectiveness

How effective do you think law enforcement is in our community?



Source: Santa Cruz Community Assessment Project, Telephone Survey.

Note: Due to low numbers the “don’t know” response is not included in the graph.

*Quality of Life
Indicator 73*

Law Enforcement Effectiveness (Continued)

Demographic Comparisons

Percent of respondents who think law enforcement is “very effective” in their community:

Demographics	1998	1999
Caucasian	32.2	36.9
Latino	38.0	47.2
North County	32.9	39.5
South County	33.5	38.2
San Lorenzo Valley	29.8	22.0
18-24	-	40.7
25-44	-	38.7
45-64	-	36.2
65 and older	-	32.5
Male	-	37.3
Female	-	37.2
Under \$15,000 per year	-	38.8
\$15,000 - \$34,999 per year	-	38.4
\$35,000 - \$64,999 per year	-	32.6
Over \$65,000 per year	-	40.4
Total Respondents	513	557

Source: Santa Cruz Community Assessment Project, Telephone Survey.

*Quality of Life
Indicator 74*

Gangs in Santa Cruz County

The Watsonville Police Department and Santa Cruz County Sheriff's Office receive state funds under the Gang Violence Suppression Program to identify active gang members and related criminal activity as well as to provide investigative leads.

Approximate Number of Members

Sureño Gangs	1997	1998	1999
Poorside Watson (PSW)	177	186	229
Villa San Carlos (VSC)	29	27	27
Santa East Side (SES)	128	104	98
Brown Pride Santa Cruz (BPSC)	72	46	50
Beach Flat Sureño	-	-	15
Mara Salvatrucha (MS)	-	23	23

Norteño Gangs	1997	1998	1999
Northside Watson (NSW)	100	51	70
City Hall Watson (CHW)	82	44	67
Watson Varrío Norte (WVN)	67	55	66
Crazy Mesa Boys (CMB)	9	17	14
Clifford Manor Locos (CML)	48	20	21
Northside Chico (NSC)	11	4	-
Northside Girls (NSG)	11	10	17
Varrío Green Valley (VGV)	21	16	13
Watsonville Varrío Loco Park (WVLP)	9	37	15
Westside Santa Cruz (WSSC)	53	49	52
Northside Santa Cruz (NSSC)	23	19	21

Source: Santa Cruz County Sheriff's Office, Watsonville Police Department, Santa Cruz Police Department, 1998.

Note: A criminal street gang, as defined by the Street Terrorism Enforcement and Prevention Act, California Penal Code section 186.22 (f), is an ongoing organization, association or group of three or more persons, whether formal or informal, having as one of its primary activities the commission of crime and having a common name or identifying sign or symbol, whose members engage in a pattern of criminal activity. These standards for classifying individuals as criminal street gang members were adopted by all local law enforcement agencies in Santa Cruz County. Similar standards are employed by the California Department of Corrections. Santa Cruz County gangs are classified as Norteños (Northern) identifying with the color red and the number fourteen, and Sureño (Southern) identifying with the color blue and the number thirteen.

*Quality of Life
Indicator 76*

Households Reporting Domestic Violence

A woman is battered every nine seconds in the United States. Eighty percent of children who live in homes where domestic violence occurs witness abuse and have a higher risk of juvenile delinquency and substance abuse later in life. Domestic violence is a widespread social problem that crosses all racial and socio-economic class lines.

✓ **Benchmark Indicator**

Number of Calls, Santa Cruz County

Agency	1994	1995	1996	1997	1998	% Change
Capitola Police Department	42	46	54	44	36	-18.2
Santa Cruz Police Department	198	209	269	167	194	16.2
Santa Cruz County Sheriff's Office	262	244	217	247	206	-16.6
Scotts Valley Police Department	29	44	21	16	38	137.5
Watsonville Police Department	180	171	238	268	274	2.2
Total	711	714	799	742	748	0.8

Cases with Weapons, Santa Cruz County

Agency	1994	1995	1996	1997	1998	% Change
Capitola Police Department	37	28	43	24	26	8.3
Santa Cruz Police Department	184	189	251	156	177	13.5
Santa Cruz County Sheriff's Office*	262	244	217	247	206	-16.6
Scotts Valley Police Department	23	-	7	16	19	18.8
Watsonville Police Department	158	128	147	175	180	2.9
Total	664	589	665	618	608	-1.6

Number of Calls and Cases with Weapons, California

	1994	1995	1996	1997	1998	% Change
Number of Calls	250,439	246,315	227,899	220,156	196,832	-10.6
Cases with Weapons	182,240	174,299	159,075	155,650	136,658	-12.2

Source: All Jurisdictions, Police Departments, County Sheriff's Office, 1998.

** The Santa Cruz County Sheriff reports all calls as cases with weapons.*

*Quality of Life
Indicator 76*

Family Violence – Child Abuse

Violence from a trusted family member is perhaps the most painful to endure. In the past year in Santa Cruz County, child abuse emergency response referrals have increased 12.5%, and reported cases of elder abuse have increased 16.5%.

Definition of Relevant Terms:

Child: Individual 16 years or less.

Sexual Abuse: The victimization of a child through sexual activities. These activities include, but are not limited to, molestation, indecent exposure, fondling, rape, and incest.

Physical Abuse: A bodily injury which has been or is being inflicted by other than accidental means on a child by the child's caretaker. Physical abuse includes, but is not limited to, willful cruelty, unjustifiable punishment, or corporal punishment / injury to a child.

Severe Neglect: The negligent failure of a caretaker to protect a child from severe malnutrition, or medically diagnosed non-organic failure to thrive. Severe neglect also includes situations where a caretaker willingly causes or allows the child to be placed in a situation where his / her health is endangered. This includes, but is not limited to, intentional failure to provide necessary medical care, adequate food, clothing or shelter.

General Neglect: The negligent failure of a caretaker to provide adequate food, clothing, shelter, or supervision where no physical injury to the child has occurred.

Emotional Abuse: Non-physical mistreatment, the results of which may be characterized by disturbed behavior on the part of the child such as severe withdrawal, regression, bizarre behavior, hyperactivity, or dangerous behavior. Such behavior, in and of itself, is not deemed to be evidence of emotional abuse. Emotional abuse includes, but is not limited to, willfully causing or permitting any child to suffer, inflicting mental suffering, or endangering a child's emotional well being.

Exploitation: The act of forcing or coercing a child into performing activities for the benefit of the caretaker which are beyond the child's capabilities or which are illegal or degrading. This term also includes sexual exploitation.

Caretaker Absence or Incapacity: The absence of the caretaker due to hospitalization, incarceration or death; incapacity of the caretaker to provide adequate care for the child due to physical or emotional illness, disabling condition, or compulsive use of alcohol or narcotics.

Source: Health and Welfare Agency Annual Statistical Report, 1998.

*Quality of Life
Indicator 76*

Family Violence - Child Abuse (Continued)

Emergency Response Child Abuse Referrals

Type of Abuse	1994	1995	1996	*1997	1998	% change
Sexual Abuse	1,031	1,061	933	343	390	13.7
Physical Abuse	1,787	1,808	1,785	613	686	11.9
Severe Neglect	260	296	334	95	72	-24.2
General Neglect	1,506	1,766	1,595	583	852	46.1
Emotional Abuse	462	531	524	298	488	63.8
Exploitation	16	21	37	0	16	100.0
Caretaker Absence or Incapacity	484	467	444	400	119	-70.1
Total	5,546	5,950	5,652	2,332	2,623	12.5

Source: Health and Welfare Agency Annual Statistical Report, 1998.

Note: In 1997 a new reporting system was implemented which counts cases of physical abuse and severe neglect as one referral instead of two. Thus the decline in figures for 1997 does not reflect a decline in the number of referrals. The new system does not duplicate so it is now counted as one. Effective FY 98/99 the referrals will no longer be counted by child, but by family.

*Quality of Life
Indicator 76*

Family Violence - Elder Abuse

Reported cases of Abuse

Reported Cases	1994	1995	1996	1997	1998	% Change
Cases of elders abused by another	136	164	157	170	200	17.6
Cases of elder self-neglect	60	96	94	67	76	13.4
Total	196	260	251	237	276	16.5

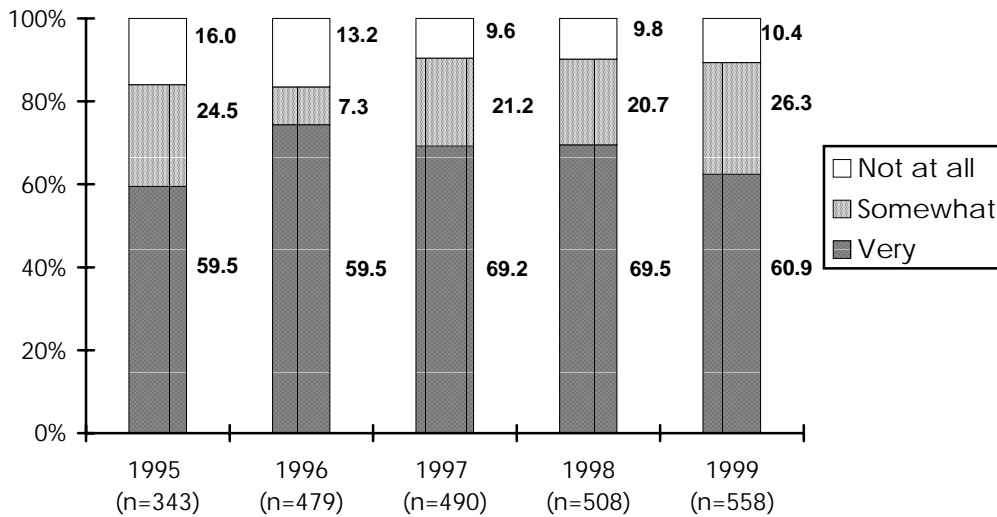
Source: Health and Welfare Agency Annual Statistical Report, 1998.

Note: Figures include the number of cases investigated in that particular year, in addition to the number of cases reported and not investigated after an evaluation by a supervisor. Elder is defined as an individual 65 years and older.

*Quality of Life
Indicator 76*

☎ Family Violence (Continued)

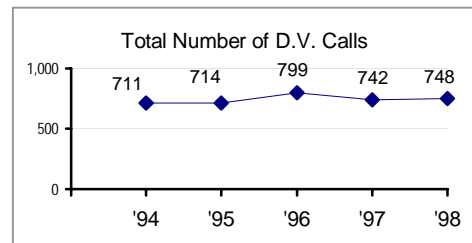
*How concerned are you about family violence
(includes domestic violence, child abuse, and senior abuse)?*



Source: Santa Cruz Community Assessment Project, Telephone Survey.

Note: Due to low numbers the “don’t know” response is not included in the graph.

Benchmark Snapshot



*Quality of Life
Indicator 76*

Family Violence (Continued)

Demographic Comparisons

Percent of respondents who are "very concerned" with family violence:

Demographics	1998	1999
Caucasian	69.1	61.2
Latino	72.2	68.5
North County	72.2	63.1
South County	72.7	63.0
San Lorenzo Valley	56.0	52.5
18-24	-	59.8
25-44	-	62.0
45-64	-	64.6
65 and older	-	52.5
Male	-	54.2
Female	-	64.4
Under \$15,000 per year	-	72.5
\$15,000 - \$34,999 per year	-	75.9
\$35,000 - \$64,999 per year	-	56.7
Over \$65,000 per year	-	52.0
Total Respondents	508	558

Source: Santa Cruz Community Assessment Project, Telephone Survey.

*Quality of Life
Indicator 77*

Driving Under the Influence - Felony

Driving under the influence arrest data is a gauge of law enforcement's effectiveness in stopping DUI crimes and preventing possible injury or fatalities.

Adult and Juvenile Felony DUI Arrests, Santa Cruz County

Ethnicity	1994	1995	1996	1997	1998	% Change
Caucasian	26	17	21	24	22	-8.3
Hispanic	17	13	18	17	12	-29.4
Other	0	0	0	1	0	-100.0
African American	0	0	0	1	0	100.0
Total	43	30	39	43	34	-20.9

Adult Felony DUI Arrests, California

Ethnicity	1994	1995	1996	1997	1998	% Change
Caucasian	3,061	2,832	2,636	2,256	2,222	-1.5
Hispanic	3,470	2,917	2,834	2,436	2,259	-7.3
Other	589	342	348	408	420	2.9
African American	357	462	438	407	390	-4.2
Total	7,477	6,553	6,256	5,507	5,291	-3.9

Note: In 1994, there were no juvenile felony DUI arrests in Santa Cruz County. In 1995, there were two Caucasian juvenile felony arrests. In 1996, there was one Hispanic juvenile DUI arrest, while in 1997 there were two Caucasian juvenile felony DUI arrests. In 1998, there were no juvenile felony DUI arrests.

Source: California Criminal Justice Profile, 1998.

*Quality of Life
Indicator 77*

Driving Under the Influence -Misdemeanor

Adult Misdemeanor DUI Arrests, Santa Cruz County

Ethnicity	1994	1995	1996	1997	1998	% Change
Caucasian	1,413	1,309	1,553	1,463	1,379	-5.7
Hispanic	1,067	995	929	856	648	-24.3
Other	32	40	31	50	39	-22.0
African American	57	33	28	42	24	-42.9
Total	2,569	2,377	2541	2,411	2,090	-13.3

Juvenile Misdemeanor DUI Arrests, Santa Cruz County

Ethnicity	1994	1995	1996	1997	1998	% Change
Caucasian	18	19	16	21	23	9.5
Hispanic	15	13	9	13	14	7.9
Other	0	2	1	0	3	100.0
African American	1	1	1	0	2	100.0
Total	34	35	27	34	42	23.5

Adult Misdemeanor DUI Arrests, California

Ethnicity	1994	1995	1996	1997	1998	% Change
Caucasian	82,975	82,212	82,969	77,566	77,553	0.0
Hispanic	92,562	87,639	88,722	82,075	79,440	-3.2
Other	13,702	10,398	11,138	13,938	13,768	-1.2
African American	10,346	12,293	12,887	12,451	12,275	-1.4
Total	199,585	192,542	195,716	186,028	183,036	-1.6

Source: California Criminal Justice Profile, 1998.

*Quality of Life
Indicator 77*

Driving Under the Influence –Misdemeanor (Continued)

Juvenile Misdemeanor DUI Arrests, California

Ethnicity	1994	1996	1996	1997	1998	% Change
Caucasian	750	832	960	818	875	7.0
Hispanic	793	619	629	639	615	-3.8
Other	82	53	69	101	136	34.7
African American	65	66	56	51	57	11.8
Total	1,690	1,570	1,714	1,609	1,683	4.6

Source: California Criminal Justice Profile, 1998.

*Quality of Life
Indicator 78*

Adult and Juvenile Drug Arrests

Drug arrest data becomes a useful tool in the analysis of the region's social conditions and a resource for developing strategies to address crime and social problems.

Juvenile Felony Drug Arrests, Santa Cruz County

Drug	1995	1996	1997	1998	% Change
Narcotics	44	42	36	48	33.3
Marijuana	17	25	25	30	20.0
Dangerous Drugs	23	18	15	11	-26.7
Other Drug Violations	3	2	1	1	0.0
Total Arrests	87	87	77	90	16.9

Juvenile Misdemeanor Drug Arrests, Santa Cruz County

Drug	1995	1996	1997	1998	% Change
Marijuana	126	109	103	142	37.9
Other Drug Violations	46	52	96	90	-6.3
Total Arrests	172	161	199	232	16.6

Adult Felony Drug Arrests, Santa Cruz County

Drug	1995	1996	1997	1998	% Change
Narcotics	652	664	712	612	-14.0
Marijuana	128	152	154	155	0.6
Dangerous Drugs	176	174	325	274	-15.7
Other Drug Violations	21	21	22	30	36.4
Total Arrests	977	1,011	1,213	1,071	-11.7

Adult Misdemeanor Drug Arrests, Santa Cruz County

Drug	1995	1996	1997	1998	% Change
Marijuana	198	295	284	319	12.3
Other Drug Violations	506	668	760	759	-0.1
Total Arrests	704	963	1,044	1,078	3.3

Source: California Criminal Justice Profile, 1998.

