

# Education Issues

## Community Goals

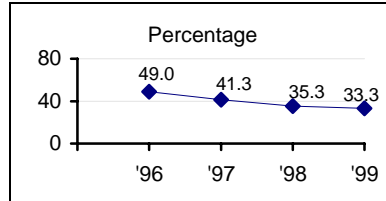
By the Year 2004, more Santa Cruz County students will graduate from high school job-ready or prepared for higher education.

By the Year 2004, elementary and middle school students will meet or exceed the average statewide scores for academic success.

By the Year 2004, Santa Cruz County children will enter kindergarten healthy and ready to learn.

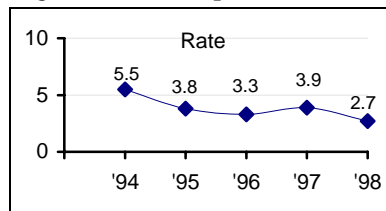
### Benchmarks

#### *Satisfaction with Education*



✓ Parents reporting being very satisfied with their child(ren)'s high school education

#### *High School Dropout Rate*



✓ High school drop out rate

## Community Quotes:

*“Teachers and schools are reaching to raise the standards of schools above mediocrity.”*

*“Bilingual education is essential to the preservation of culture and mutual respect.”*

*Children badly need more art and music programs to round out their education.*

# Education Summary

Successful students, sufficient services, use of technology, school safety and participation in our schools are a few of the major indicators that determine the health of education in Santa Cruz County.

Overall, the climate looks favorable as state achievement testing shows that Santa Cruz County scores for students in most grade levels are at or above average. For county high school seniors taking the Scholastic Aptitude Test (SAT), scores continue to exceed the state averages in both verbal and math scores. For early grades spelling is challenging, while high school juniors scored just a point or two below the state average in science, math, language and social studies.

Success rates are on the rise as more students graduated from Santa Cruz high schools in 1998. In addition, they are taking more rigorous college prep courses such as advanced math, physics and chemistry. The dropout rates for most high schools in Santa Cruz County are decreasing with nearly all grades and ethnic groups having dropout rates below the state level.

At the preschool level, notable advances have been made in providing licensed childcare with a continuing need for increased Head Start and Migrant Head Start programs. The new Children and Families First Commission, funded by Prop 10, will bring new resources to this 0-5 year-old age group.

Santa Cruz County is keeping up with the technological age as the availability of home-based computers has increased. Along with this increased use of computers, has also come a notable gain in the use of Internet services in the home.

At a time when school safety has become a critical concern nationwide, 97% of parents feel elementary and middle schools provide a safe learning environment. Interestingly, this rate of satisfaction declines significantly at the high school level (76%).

Parents of elementary school students indicate a higher level of satisfaction with the substance abuse prevention program in the schools this year than last, although 51% of middle school parents are at least somewhat satisfied with the programs compared to 37% last year. High school levels of satisfaction remain relatively the same as last year at 34%.

Parents had a mixed reaction concerning their overall satisfaction with their children's education for elementary, middle and high school. Parents of elementary school students showed a decrease (58% compared to 64% last year) being very satisfied while middle school parents showed a decrease (44% compared to 51% last year) and high school parents also declined from 35% in 1998 to 33% in 1999. Overall community satisfaction with schools has remained steady with nearly 18% percent of respondents indicating they were very satisfied with the local system of education while 14% indicated they were not at all satisfied.

As their children get older, parent participation in school activities drastically declines. Of parents with children in elementary school, 47% are often involved, while only 16% of high school parents are often involved in school activities.

The number of adults receiving a General Education Certificate (GED) has held steady between 1997 and 1998 but the number of students passing the GED has declined in the same time period with the Santa Cruz City High School District reporting a decrease of 25%.

Special thanks to Diane Siri from the County Office of Education for contributing to this summary.

*Quality of Life  
Indicator 19*

## Satisfaction with Child's Education

Parental satisfaction with local public schools is thought to be related to support for school programs, educational funding and student performance.

*How satisfied are you with your child's education?*

<b>Elementary School</b>	<b>1996</b>	<b>1997</b>	<b>1998</b>	<b>1999</b>
Very satisfied	55.0	66.3	58.3	63.9
Somewhat satisfied	31.5	25.3	35.4	33.3
Not at all satisfied	13.5	8.4	6.2	2.8
<b>Total Respondents</b>	111	95	96	108

<b>Middle School</b>	<b>1996</b>	<b>1997</b>	<b>1998</b>	<b>1999</b>
Very satisfied	48.0	46.9	51.2	44.4
Somewhat satisfied	32.0	37.5	36.6	53.3
Not at all satisfied	20.0	15.6	12.2	2.2
<b>Total Respondents</b>	50	32	41	45

<b>High School</b>	<b>1996</b>	<b>1997</b>	<b>1998</b>	<b>1999</b>
Very satisfied	49.0	41.3	35.3	33.3
Somewhat satisfied	36.7	43.5	37.3	55.6
Not at all satisfied	14.3	15.2	27.5	11.1
<b>Total Respondents</b>	49	46	51	54

*Source: Santa Cruz County Community Assessment Project, Telephone Survey.*

### Benchmark Snapshot



*Quality of Life  
Indicator 19*

**☎ Satisfaction with Child’s Education  
(Continued)  
Demographic Comparisons**

*Percent of parents who are “very satisfied” with their child’s high school education:*

<b>Demographic</b>	<b>1998</b>	<b>1999</b>
North County	26.7	39.1
South County	44.4	34.8
San Lorenzo Valley	22.2	14.3
Caucasian	19.4	22.9
Latino	62.5	64.3
Male	-	25.0
Female	-	36.1
Less than \$15,000 a year	-	62.5
\$15,000 - \$34,999 a year	-	58.3
\$35,000 - \$64,999 a year	-	25.0
Over \$65,000 a year	-	14.3
<b>Total Respondents</b>	51	54

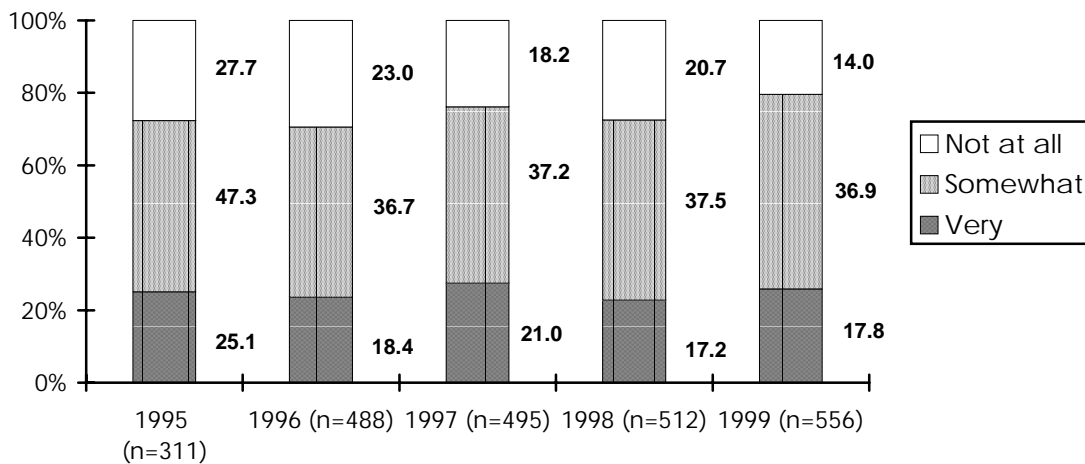
*Source: Santa Cruz County Community Assessment Project, Telephone Survey.*

*Quality of Life  
Indicator 20*

## Satisfaction with Educational System

Satisfaction of the entire community with public schools is a key indicator since California schools are state funded.

*Overall, how satisfied are you with our local system of education?*



Source: Santa Cruz County Community Assessment Project, Telephone Survey.

Note: This question was asked of all survey Respondents regardless of whether they had children attending local schools or not. Due to low numbers the “don’t know” response is not included in the graph.

*Quality of Life  
Indicator 20*

**☎ Satisfaction with Educational System  
(Continued)  
Demographic Comparisons**

*Percent of respondents who are “very satisfied” with local system of education:*

<b>Demographics</b>	<b>1998</b>	<b>1999</b>
North County	13.8	15.2
South County	22.6	23.1
San Lorenzo Valley	14.1	13.6
Caucasian	10.9	13.6
Latino	47.8	43.2
18-24	-	24.7
25-44	-	20.4
45-64	-	15.3
65 and older	-	9.9
Male	-	17.1
Female	-	18.3
Under \$15,000 per year	-	35.3
\$15,000 - \$34,999 per year	-	19.8
\$35,000 - \$64,999 per year	-	14.1
Over \$65,000 per year	-	12.5
<b>Total Respondents</b>	<b>512</b>	<b>556</b>

*Source: Santa Cruz County Community Assessment Project, Telephone Survey.*

*Quality of Life  
Indicator 20*

## Satisfaction with Education System (Continued)

*What are the best things happening in the local schools today?  
(Top five responses)*

<b>Response</b>	<b>1997</b>	<b>1998</b>	<b>1999</b>
Good Teachers	13.0	13.9	14.7
More Parent / Community Involvement	8.7	8.7	10.8
Class Size Reduction	10.7	12.3	7.2
Technology (Computers)	10.9	15.3	7.0
Better teaching methods	7.4	7.6	6.5

*What are the most serious problems facing local schools today?  
(Top five responses)*

<b>Response</b>	<b>1997</b>	<b>1998</b>	<b>1999</b>
Violence/ gangs / crime	16.1	13.9	24.5
Funding	20.1	22.9	21.6
Over-crowded Classes	12.9	15.2	12.0
Drugs	8.2	8.4	9.7
Quality of teachers	12.7	7.7	8.6

*Source: Santa Cruz County Community Assessment Project, Telephone Survey.*

*Quality of Life  
Indicator 21*

## School Readiness

Enrollment in child care and development programs contributes to children's school readiness, a predictor of continued success in school.

### Enrollment Summary of Selected Publicly Funded Child Care and Development Programs

<b>Total Enrollment</b>	<b>1994/95</b>	<b>1995/96</b>	<b>1996/97</b>	<b>1997/98</b>	<b>1998/99</b>	<b>% Change</b>
State and Migrant Preschool	200	221	292	277	274	-1.1
General Center-Based or Family Care	301	287	334	330	661	100.3
Alternative Payment and CalWorks-Related	-	-	-	-	781	100.0
Other: Pajaro Valley Unified School District (School-Age Parenting)	20	20	34	-	22	100.0
<b>Total</b>	<b>521</b>	<b>528</b>	<b>660</b>	<b>607</b>	<b>1738</b>	<b>186.3</b>

### Enrollment in Selected Publicly Funded Child Care and Development Programs, by Site

<b>State and Migrant Preschool</b>	<b>1994/95</b>	<b>1995/96</b>	<b>1996/97</b>	<b>1997/98</b>	<b>1998/99</b>	<b>% Change</b>
Cabrillo College	-	-	30	31	31	0.0
Glen Arbor School, Inc.	20	20	20	18	23	27.8
Live Oak Elementary School District	48	69	85	85	86	1.2
Pacific Elementary School District	10	10	24	12	21	75.0
Pajaro Valley Unified School District	122	122	147	147	128	-12.9
YWCA of Watsonville	-	-	16	15	16	6.7
<b>Total</b>	<b>200</b>	<b>221</b>	<b>292</b>	<b>277</b>	<b>274</b>	<b>-1.1</b>

*Source: Respective care sites, Santa Cruz County Office of Education, 1999.*

*Quality of Life  
Indicator 21*

## School Readiness (Continued)

### Enrollment in Selected Publicly Funded Child Care and Development Programs, by Site, continued

<b>General Center-Based or Family Care</b>	<b>1994/95</b>	<b>1995/96</b>	<b>1996/97</b>	<b>1997/98</b>	<b>1998/99</b>	<b>% Change</b>
After School Day Care	-	-	-	-	68	100.0
Cabrillo College	-	-	2	14	12	-14.3
Cope Centro Familiar	41	41	45	33	39	18.2
Food and Nutrition Services	62	32	82	82	64	-22.0
Granary Child Development Center	-	-	-	-	22	100.0
Growth and Development, Inc.	-	-	-	-	32	100.0
Live Oak Elementary School District	40	40	41	42	185	340.5
Pajaro Valley Unified School District	120	120	125	125	128	2.4
University of California, Santa Cruz	34	34	32	28	57	103.6
Walnut Avenue Women's Center	-	-	-	-	18	100.0
YWCA of Watsonville	4	20	7	6	36	500.0
<b>Total</b>	<b>301</b>	<b>287</b>	<b>334</b>	<b>330</b>	<b>661</b>	<b>100.3</b>

*Note: Some data not available in previous years.*

<b>Alternative Payment and CalWorks-Related</b>	<b>1998/99</b>
Policy Analysis for California Education (PACE)	15
Santa Cruz County Human Resources	371
Santa Cruz Parents Association	395
<b>Total</b>	<b>781</b>

*Source: Respective care sites, Santa Cruz County Office of Education, 1999.*

*Note: Includes subsidies for CalWorks Stage 2, Stage 3 recipients.*

*Quality of Life  
Indicator 21*

## School Readiness (Continued)

Preschool programs, including licensed child care and Head Start, can provide important stimulation and socialization for children outside of the home, and helps prepare them for further schooling.

### Licensed Child Care Programs

<b>Enrollment</b>	<b>1996</b>	<b>1997</b>	<b>1998</b>	<b>1999</b>	<b>% Change</b>
Licensed Child Care Centers	5,291	2,881	3,472	4,483	29.1
Licensed Family Day Care Homes	2,647	2,071	1,935	2,519	30.2
<b>Total Enrollment</b>	<b>7,938<sup>1</sup></b>	<b>4,952</b>	<b>5,407</b>	<b>7,002</b>	<b>29.5</b>

*Source: Santa Cruz County Office of Education, Child Care Switchboard*

### Headstart Programs

<b>Santa Cruz County Head Start</b>	<b>1995</b>	<b>1996</b>	<b>1997</b>	<b>1998</b>	<b>% Change</b>
Enrollment	391	391	391	411	5.1
Waiting list	244	255	400	269	-32.8

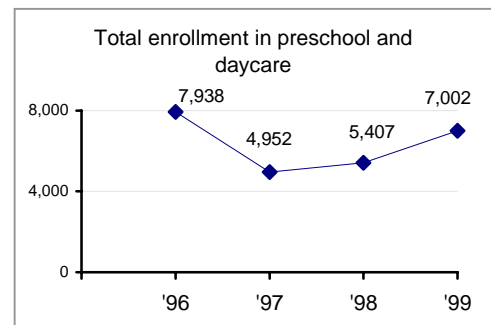
  

<b>Migrant Head Start</b>	<b>1995</b>	<b>1996</b>	<b>1997</b>	<b>1998</b>	<b>% Change</b>
Enrollment	300	300	300	300	0.0
Waiting list	150	100	200	215	7.5

*Source: Santa Cruz County Headstart, Migrant Head Start.*

*Note: Total data for 1996 included all children enrolled in child care and after school recreation programs, while the total data for 1997 and 1998 reflects only children enrolled in child care.*

### Benchmark Snapshot



*Quality of Life  
Indicator 22*

## Education Enrollment

Enrollment data indicates the number of students enrolled each year in public K-12 schools and helps decision makers monitor growth and resource needs.

### School District Enrollment

<b>District</b>	<b>1994/95</b>	<b>1995/96</b>	<b>1996/97</b>	<b>1997/98</b>	<b>1998/99</b>	<b>% Change</b>
County Office of Education	416	578	647	550	524	-4.7
California Youth Authority	-	-	-	-	66	N/a
Bonny Doon Union Elementary	280	265	258	236	235	-0.4
Happy Valley Elementary	150	151	133	137	141	2.9
Live Oak Elementary	2,074	2,138	2,168	2,195	2,214	0.9
Mountain Elementary	158	154	154	170	158	-7.1
Pacific Elementary	65	72	76	81	81	0.0
Pajaro Valley Joint Unified	17,385	17,736	18,355	18,895	19,400	2.7
San Lorenzo Valley Unified	4,162	4,143	4,144	4,159	4,351	4.6
Santa Cruz City Elementary	3,457	3,395	3,335	3,114	3,005	-3.5
Santa Cruz City High	5,309	5,490	5,682	5,805	5,930	2.2
Soquel Elementary	1,780	2,438	2,403	2,449	2,458	0.4
Scotts Valley Unified	2,404	1,856	1,893	1,916	1,949	1.7
<b>Santa Cruz County</b>	<b>37,640</b>	<b>38,416</b>	<b>39,248</b>	<b>39,707</b>	<b>40,512</b>	<b>2.0</b>
<b>California</b>	<b>5,341,025</b>	<b>5,467,224</b>	<b>5,612,965</b>	<b>5,727,303</b>	<b>5,844,111</b>	<b>2.0</b>

*Source: California Department of Education, California Basic Educational Data System (CBEDS), 1999.*

*Note: Enrollment totals are active fall enrollments.*

*Quality of Life  
Indicator 23*

## English Proficiency

Changing demographics requires changing allocation of resources for teaching non-English speaking students.

### Percent of Limited English Proficient Students by District

<b>District</b>	<b>1994/95</b>	<b>1995/96</b>	<b>1996/97</b>	<b>1997/98</b>	<b>% Change</b>
County Office of Education	N/a	1.9	3.4	2.9	-14.7
Bonny Doon Union Elementary	0.7	0.0	0.0	0.4	100.0
Happy Valley Elementary	0.0	0.0	0.0	0.0	0.0
Live Oak Elementary	9.5	10.1	15.8	18.1	14.6
Mountain Elementary	1.3	0.0	0.0	0.0	100.0
Pacific Elementary	10.8	8.3	6.6	8.6	30.3
Pajaro Valley Joint Unified	48.1	47.8	47.1	46.3	-1.7
San Lorenzo Valley Unified	0.3	0.4	0.5	0.7	40.0
Santa Cruz City Elementary	20.2	21.4	22.3	23.6	5.8
Santa Cruz City High	7.8	8.1	7.7	6.8	-11.7
Scotts Valley Unified	N/a	0.9	1.8	1.0	-44.4
Soquel Elementary	7.6	7.7	8.3	8.6	3.6
<b>County</b>	<b>26.3</b>	<b>26.3</b>	<b>26.6</b>	<b>26.6</b>	<b>0.0</b>

*Source: California Department of Education, California Basic Educational Data System (CBEDS), 1999.*

*Quality of Life  
Indicator 23*

## English Proficiency (Continued)

### Top 15 Languages Spoken by LEP students

	1995/96	1996/97	1997/98	1998/99	% Change
Spanish	9,804	10,147	10,290	10,415	1.2
Filipino (Tagalog)	83	78	58	51	-12.1
Cantonese	20	23	23	29	26.1
Vietnamese	12	23	22	20	-9.1
Korean	19	22	23	16	-30.4
Punjabi	12	11	13	14	7.7
Portuguese	21	20	19	12	-36.8
Japanese	17	12	17	11	-35.3
Russian	5	7	5	10	100.0
Ilocano	8	6	12	9	-25.0
German	1	5	11	7	-36.4
Arabic	12	11	5	6	20.0
Hindi	2	0	2	6	200.0
Khmer (Cambodian)	16	9	6	6	0.0
Samoan	1	2	1	4	300.0
Other non-English	61	69	41	44	7.3
<b>Total LEP Enrollment (all languages)</b>	10,094	10,445	10,548	10,660	1.1

*Source: California Department of Education, California Basic Educational Data System (CBEDS), 1999.*

*Note: Top 15 Languages as of 1999.*

*Quality of Life  
Indicator 24*

## Ethnic Representation

It is generally felt that having teachers and students of the same ethnic background helps students succeed, as they identify more with teachers of their own ethnicity.

### Comparison of Latino Students and Latino Teachers, by District

<b>Santa Cruz County Office of Education</b>	<b>1995/96</b>	<b>1996/97</b>	<b>1997/98</b>	<b>1998/99</b>	<b>% Change</b>
Students	38.1	41.7	46.0	48.3	5.0
Teachers	4.0	6.5	6.0	4.2	-30.0

<b>Bonny Doon Union Elementary</b>	<b>1995/96</b>	<b>1996/97</b>	<b>1997/98</b>	<b>1998/99</b>	<b>% Change</b>
Students	4.9	3.5	1.7	0.4	-76.5
Teachers	0.0	0.0	0.0	0.0	0.0

<b>Happy Valley Elementary</b>	<b>1995/96</b>	<b>1996/97</b>	<b>1997/98</b>	<b>1998/99</b>	<b>% Change</b>
Students	11.3	15.0	14.6	0.0	-100.0
Teachers	0.0	0.0	0.0	0.0	0.0

<b>Live Oak Elementary</b>	<b>1995/96</b>	<b>1996/97</b>	<b>1997/98</b>	<b>1998/99</b>	<b>% Change</b>
Students	26.7	28.9	29.7	30.3	2.0
Teachers	1.1	2.0	5.5	8.8	60.0

<b>Mountain Elementary</b>	<b>1995/96</b>	<b>1996/97</b>	<b>1997/98</b>	<b>1998/99</b>	<b>% Change</b>
Students	9.7	7.8	10.6	2.5	-76.4
Teachers	14.3	14.3	25.0	0.0	-100.0

*Quality of Life  
Indicator 24*

## Ethnic Representation (Continued)

<b>Pacific Elementary</b>	<b>1995/96</b>	<b>1996/97</b>	<b>1997/98</b>	<b>1998/99</b>	<b>% Change</b>
Students	8.3	7.9	13.6	23.5	72.8
Teachers	0.0	0.0	0.0	0.0	0.0

<b>Pajaro Valley Unified School District</b>	<b>1995/96</b>	<b>1996/97</b>	<b>1997/98</b>	<b>1998/99</b>	<b>% Change</b>
Students	70.2	71.4	72.0	73.1	1.5
Teachers	15.2	15.9	16.1	16.5	2.5

<b>San Lorenzo Valley Unified</b>	<b>1995/96</b>	<b>1996/97</b>	<b>1997/98</b>	<b>1998/99</b>	<b>% Change</b>
Students	4.9	4.7	4.1	4.8	17.1
Teachers	2.7	1.7	2.0	3.6	80.0

<b>Santa Cruz City Elementary</b>	<b>1995/96</b>	<b>1996/97</b>	<b>1997/98</b>	<b>1998/99</b>	<b>% Change</b>
Students	27.4	28.4	30.2	17.3	-42.7
Teachers	9.5	9.1	8.2	7.9	-3.7

<b>Santa Cruz City High</b>	<b>1995/96</b>	<b>1996/97</b>	<b>1997/98</b>	<b>1998/99</b>	<b>% Change</b>
Students	17.9	18.2	17.2	17.3	0.6
Teachers	3.2	3.4	3.6	4.0	11.1

<b>Soquel Elementary</b>	<b>1995/96</b>	<b>1996/97</b>	<b>1997/98</b>	<b>1998/99</b>	<b>% Change</b>
Students	14.7	15.1	16.7	16.5	-1.2
Teachers	6.7	6.1	4.8	4.5	-6.3

*Quality of Life  
Indicator 24*

## Ethnic Representation (Continued)

<b>Scotts Valley Unified</b>	<b>1995/96</b>	<b>1996/97</b>	<b>1997/98</b>	<b>1998/99</b>	<b>% Change</b>
Students	3.2	4.4	5.0	4.5	-10.0
Teachers	1.4	2.2	2.1	2.0	-4.8

<b>Santa Cruz County</b>	<b>1995/96</b>	<b>1996/97</b>	<b>1997/98</b>	<b>1998/99</b>	<b>% Change</b>
Students	41.2	42.5	43.3	44.0	1.6
Teachers	9.1	9.7	9.8	10.3	5.1

<b>California</b>	<b>1995/96</b>	<b>1996/97</b>	<b>1997/98</b>	<b>1998/99</b>	<b>% Change</b>
Students	38.7	39.7	40.5	41.3	2.0
Teachers	9.7	10.6	11.5	12.1	5.2

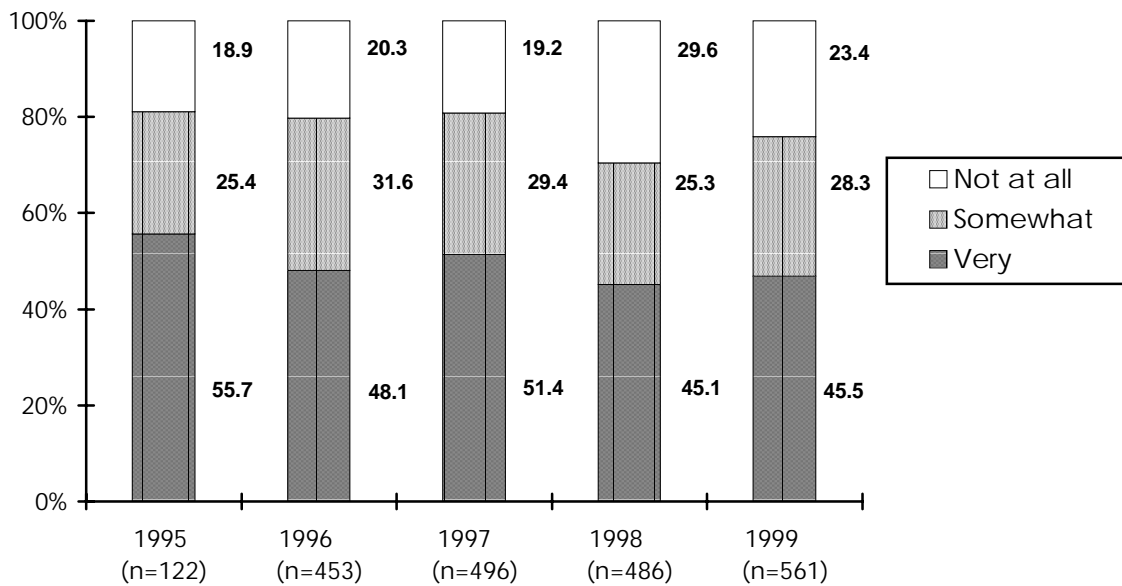
*Source: California Department of Education, California Basic Educational Data System (CBEDS), 1999.*

*Quality of Life  
Indicator 25*

**☎ Bilingual Education**

Indicates people's perception of the importance of bilingual education

*How important do you think bilingual education is?*



*Why do you feel this way? (Top four responses)*

Responses	1997	1998	1999
Everyone should speak English	26.9	36.4	25.6
Important to speak more than one language	19.7	16.0	19.0
Many Spanish speaking people	27.1	13.9	18.8
Increases understanding / communication	6.5	17.1	15.8

Source: Santa Cruz County Community Assessment Project, Telephone Survey.

Note: Due to low numbers the "don't know" response is not included in the graph.

*Quality of Life  
Indicator 26*

## Expenditures per Pupil

Funding for public schools determines the programs offered to students as well as teacher compensation, class size, facilities and extra curricular activities.

### NEA-Adjusted Average Expenditures Per Pupil, by District

School District	94/95	95/96	96/97	% Change
Bonny Doon Union Elementary	\$4,550	\$4,900	\$5,450	11.2
Happy Valley Elementary	4,350	4,950	5,900	19.2
Live Oak Elementary	4,750	4,900	5,550	13.3
Mountain Elementary	3,850	4,050	4,300	6.2
Pacific Elementary	7,450	6,500	5,650	-13.1
Pajaro Valley Joint Unified	4,850	5,150	5,450	5.8
Santa Cruz City Elementary/High	4,800	4,750	5,200	9.5
San Lorenzo Valley Unified	4,600	4,600	5,050	9.8
Scotts Valley Unified	4,200	4,350	4,900	12.6
Soquel Elementary	4,750	4,550	5,300	16.5

	94/95	95/96	96/97	% Change
All Elementary Districts	4,400	4,700	5,100	8.5
All Unified Districts	4,700	5,000	5,300	6.0
Santa Cruz County *	4,092	4,266	4,632	8.6
California	4,724	4,977	5,327	7.0
Nation	-	-	\$6,335	-

Source: California Department of Education, California Basic Educational Data System (CBEDS), 1999.

Note: The above figures have been adjusted by the Department to be consistent with the National Education Association, to allow for state and nationwide comparability. This adjustment is commonly referred to as NEA-adjusted. NEA-adjusted expenditures per pupil for 1997/98 and 1998/99 have not yet been released by the state. Nation-wide NEA adjusted expenditures per pupil not available.

\* NEA-adjusted expenditures are not available on a county level. Figures presented for Santa Cruz County are per ADA (average daily attendance). ADA estimates cannot be directly compared to NEA estimates, and are shown here for illustrative purposes only.

*Quality of Life  
Indicator 27*

## Substance Abuse Prevention Programs

Drug and alcohol abuse prevention programs provide students with tools to make healthy choices.

*How satisfied are you with the substance abuse prevention programs at your child(ren)'s school?*

<b>Elementary School</b>	<b>1996</b>	<b>1997</b>	<b>1998</b>	<b>1999</b>
Very satisfied	48.6	47.0	31.3	35.8
Somewhat satisfied	20.6	24.1	26.3	32.1
Not at all satisfied	7.5	6.0	8.1	1.9
Don't know	23.4	22.9	34.3	30.2
<b>Total Respondents</b>	107	83	99	106

<b>Middle School</b>	<b>1996</b>	<b>1997</b>	<b>1998</b>	<b>1999</b>
Very satisfied	36.7	40.6	31.7	31.1
Somewhat satisfied	30.6	37.5	36.6	51.1
Not at all satisfied	14.3	12.5	9.8	4.4
Don't know	18.4	9.4	22.0	13.3
<b>Total Respondents</b>	49	32	41	45

<b>High School</b>	<b>1996</b>	<b>1997</b>	<b>1998</b>	<b>1999</b>
Very satisfied	41.7	28.3	34.0	29.6
Somewhat satisfied	25.0	39.1	30.0	27.8
Not at all satisfied	18.8	19.6	14.0	13.0
Don't know	14.6	13.0	22.0	29.6
<b>Total Respondents</b>	48	46	50	54

*Source: Santa Cruz County Community Assessment Project, Telephone Survey.*

*Quality of Life  
Indicator 28*

**☎ School Safety**

Indicates perceptions of parents regarding safety at their children's schools.

*Does your child(ren)'s school provide a safe environment for learning?*

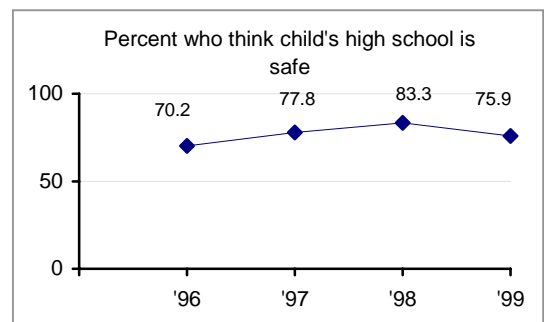
<b>Elementary School</b>	<b>1996</b>	<b>1997</b>	<b>1998</b>	<b>1999</b>
Yes	91.8	94.7	98.0	97.2
No	8.2	5.3	2.0	2.8
<b>Total Respondents</b>	110	94	98	108

<b>Middle School</b>	<b>1996</b>	<b>1997</b>	<b>1998</b>	<b>1999</b>
Yes	83.0	81.3	92.1	97.8
No	17.0	18.8	7.9	2.2
<b>Total Respondents</b>	47	32	38	45

<b>High School</b>	<b>1996</b>	<b>1997</b>	<b>1998</b>	<b>1999</b>
Yes	70.2	77.8	83.3	75.9
No	29.8	22.2	16.7	20.4
<b>Total Respondents</b>	47	45	48	54

*Source: Santa Cruz County Community Assessment Project, Telephone Survey.*

**Benchmark Snapshot**



*Quality of Life  
Indicator 29*

## Expulsions

Indicates district expulsions

### Number of Students Expelled, by Selected District

<b>School District</b>	<b>1994/95</b>	<b>1995/96</b>	<b>1996/97</b>	<b>1997/98</b>	<b>% Change</b>
Pajaro Valley Joint Unified	106	94	113	89	-21.2
San Lorenzo Valley Unified	17	2	6	17	183.3
Santa Cruz City High	17	17	12	16	33.3
<b>County</b>	140	113	131	122	-6.9

*Source: Santa Cruz County Office of Education, 1999.*

### Rate of Expulsions per 1,000 Students, by Selected District

<b>School District</b>	<b>1994/95</b>	<b>1995/96</b>	<b>1996/97</b>	<b>1997/98</b>	<b>% Change</b>
Pajaro Valley Joint Unified	6.1	5.3	6.2	4.7	-24.2
San Lorenzo Valley Unified	4.1	0.5	1.5	4.1	173.3
Santa Cruz City High	3.2	3.1	2.1	2.8	33.3
<b>County</b>	3.7	2.9	3.3	3.1	-6.1

*Source: Santa Cruz County Office of Education, 1999.*

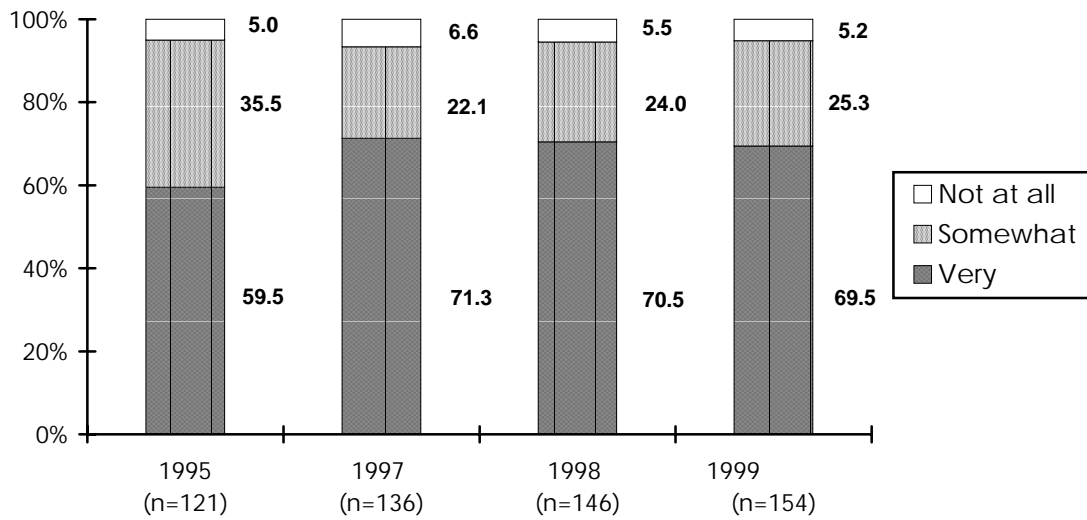
*Note: Expulsion rate is calculated by: number of expulsions, divided by total district or county population, then multiplied by 1,000.*

*Quality of Life  
Indicator 30*

## Parent Participation

Parent involvement is one of the key indicators of student success in school.

*How active would you say you are in helping your own child(ren) in school?*



*Source: Santa Cruz County Community Assessment Project, Telephone Survey.*

*Quality of Life  
Indicator 30*

## Parent Participation (Continued)

Indicates involvement of parents in school activities.

*How often do you participate in activities at your child(ren)'s school(s)?*

<b>Elementary School</b>	<b>1996</b>	<b>1997</b>	<b>1998</b>	<b>1999</b>
Often	57.3	49.5	46.0	47.2
Sometimes	40.9	42.1	46.0	41.7
Never	1.8	8.4	8.0	11.1
<b>Total Respondents</b>	110	95	100	108

<b>Middle School</b>	<b>1996</b>	<b>1997</b>	<b>1998</b>	<b>1999</b>
Often	30.0	31.3	22.0	26.7
Sometimes	62.0	43.8	58.5	53.3
Never	8.0	25.0	19.5	20.0
<b>Total Respondents</b>	50	32	41	45

<b>High School</b>	<b>1996</b>	<b>1997</b>	<b>1998</b>	<b>1999</b>
Often	18.4	30.4	21.2	16.7
Sometimes	67.3	39.1	48.1	51.9
Never	14.3	30.4	30.8	31.5
<b>Total Respondents</b>	49	46	52	54

*Source: Santa Cruz County Community Assessment Project, Telephone Survey.*

*Quality of Life  
Indicator 30*

**☎ Parent Participation (Continued)  
Demographic Comparisons**

*Percent of parents who say they “often” participate in activities at their child’s middle school:*

<b>Demographic</b>	<b>1998</b>	<b>1999</b>
Caucasian	25.9	30.0
Latino	8.3	16.7
North County	20.0	25.0
South County	15.0	25.0
San Lorenzo Valley	50.0	37.5
Male	-	41.7
Female	-	21.9
Less than \$15,000 a year	-	0.0
\$15,000 - \$34,999 a year	-	42.9
\$35,000 - \$64,999 a year	-	30.0
Over \$65,000 a year	-	26.1
<b>Total Respondents</b>	<b>41</b>	<b>45</b>

*Source: Santa Cruz County Community Assessment Project, Telephone Survey.*

*Quality of Life  
Indicator 31*

## High School Dropout Rates

Dropout rates are indicators of those who may not continue their education, thereby increasing the likelihood they will not meet the minimum work skills required by the workforce and community.

### Annual Drop-out Rates

Districts	1993/94	1994/95	1995/96	1996/97	1997/98	% Change
Pajaro Valley Joint Unified	8.0	3.7	3.3	3.4	3.1	-8.8
San Lorenzo Valley Unified	3.2	5.2	2.3	2.8	3.3	17.9
Santa Cruz City High	4.0	3.7	3.8	5.1	2.4	-52.9
County	5.5	3.8	3.3	3.9	2.7	-30.8
State	4.8	4.4	3.9	3.3	2.9	-12.1

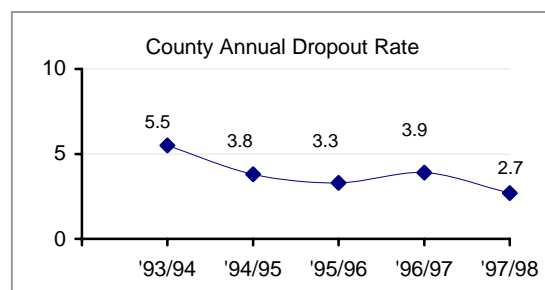
### Four Year Drop-out Rates

Districts	1993/94	1994/95	1995/96	1996/97	1997/98	% Change
Pajaro Valley Joint Unified	26.6	13.3	10.9	14.0	12.6	-10.0
San Lorenzo Valley Unified	13.0	20.3	8.8	11.3	13.5	19.5
Santa Cruz City High	18.0	14.5	14.7	19.6	9.9	-49.5
County	21.3	14.6	12.6	15.5	11.2	-27.7
State	18.5	17.1	15.3	13.0	11.7	-10.0

Source: California Department of Education, California Basic Educational Data System (CBEDS), 1999.

Note: A dropout is a student who meets the following criteria: was formerly enrolled in grades 7, 8, 9, 10, 11, or 12; was formerly enrolled in a school or program leading to a high school diploma or its equivalent; was under 21 years of age; has left school for 45 consecutive school days and has not enrolled in another public or private educational institution or school program; has not received a high school diploma or its equivalent; has not re-enrolled in the school. The annual dropout rate is calculated by dividing the number of dropouts in grades 9 through 12, by the total enrollment in those grades for the same year.

#### Benchmark Snapshot



*Quality of Life  
Indicator 31*

## High School Dropout Rates (Continued)

### Annual Dropout Rates by Ethnicity, Santa Cruz County

<b>Ethnicity</b>	<b>1994/95</b>	<b>1995/96</b>	<b>1996/97</b>	<b>1997/98</b>	<b>% Change</b>
Caucasian	3.5	2.7	3.2	1.9	-40.6
Latino	4.4	4.2	4.8	4.0	-16.7
Asian	2.4	0.4	0.8	1.5	87.5
African American	2.7	4.2	7.9	2.2	-72.2
Filipino	0.8	3.5	5.3	3.7	-30.2
American Indian	6.3	9.0	7.8	2.9	-62.8
Pacific Islander	4.0	5.6	0.0	2.4	100.0

### Annual Dropout Rates by Ethnicity, California

<b>Ethnicity</b>	<b>1994/95</b>	<b>1995/96</b>	<b>1996/97</b>	<b>1997/98</b>	<b>% Change</b>
Caucasian	2.7	2.4	2.0	1.9	-5.0
Latino	6.4	5.7	4.8	4.1	-14.6
Asian	2.2	2.0	1.7	1.6	-5.9
African American	7.7	6.7	5.2	4.4	-15.4
Filipino	2.6	2.3	1.7	1.9	11.8
American Indian	4.7	4.6	4.2	4.2	0.0
Pacific Islander	5.1	4.7	3.7	3.3	-10.8

### Four Year Dropout Rates by Ethnicity, Santa Cruz County

<b>Ethnicity</b>	<b>1994/95</b>	<b>1995/96</b>	<b>1996/97</b>	<b>1997/98</b>	<b>% Change</b>
Caucasian	13.7	10.6	12.7	7.9	-37.8
Latino	15.9	15.0	19.4	16.6	-14.4
Asian	9.5	1.5	3.8	6.0	57.9
African American	9.7	17.9	30.4	9.9	-67.4
Filipino	2.9	14.1	19.4	15.5	-20.1
American Indian	21.9	37.4	28.9	11.8	-59.2
Pacific Islander	14.3	21.3	0.0	25.0	100.0

Source: California Department of Education, California Basic Educational Data System (CBEDS), 1999.

Note: The four year derived drop out rate calculates the percentage of students who drop out over the course of four years in high school.

*Quality of Life  
Indicator 31*

## High School Dropout Rates (Continued)

### Annual Dropout Rates by Grade, Santa Cruz County

<b>Grade</b>	<b>1994/95</b>	<b>1995/96</b>	<b>1996/97</b>	<b>1997/98</b>	<b>% Change</b>
Grade 8	0.4	0.4	0.9	0.2	-77.8
Grade 9	4.4	4.0	2.3	1.9	-17.4
Grade 10	3.4	3.1	3.3	1.8	-45.5
Grade 11	4.0	3.2	4.3	2.6	-39.5
Grade 12	3.6	2.9	6.6	5.4	-18.2
<b>County</b>	<b>3.8</b>	<b>3.3</b>	<b>3.9</b>	<b>2.7</b>	<b>-30.8</b>

### Annual Dropout Rates by Grade, California

<b>Grade</b>	<b>1994/95</b>	<b>1995/96</b>	<b>1996/97</b>	<b>1997/98</b>	<b>% Change</b>
Grade 8	1.2	1.4	0.9	1.0	11.1
Grade 9	4.0	3.5	3.3	2.6	-21.2
Grade 10	4.8	4.0	3.2	2.7	-15.6
Grade 11	4.6	4.1	3.3	3.1	-6.1
Grade 12	4.9	4.7	4.0	3.9	-2.5
<b>State</b>	<b>4.4</b>	<b>3.9</b>	<b>3.3</b>	<b>2.9</b>	<b>-12.1</b>

*Source: California Department of Education, California Basic Educational Data System (CBEDS), 1999.*

*Quality of Life  
Indicator 32*

## Test Scores - SAT

Standardized tests, such as the SAT, are a measure of academic performance of college bound students. They allow for local, state and national comparisons.

### Percent of Students Tested

High School	1993/94	1994/95	1995/96	1996/97	1997/98	% Change
Aptos High	47.9	39.7	43.5	43.0	35.3	-17.9
Harbor High	56.7	55.7	52.1	54.5	56.3	3.3
San Lorenzo Valley High	38.7	40.8	44.7	39.1	45.8	17.1
Santa Cruz High	38.1	40.5	42.0	39.7	41.9	5.5
Soquel High	48.3	41.1	46.0	38.7	33.7	-12.9
Watsonville High	38.1	45.0	40.3	35.4	32.6	-7.9
County	42.5	37.4	37.7	34.9	34.7	-0.6
State	37.0	36.0	36.7	36.2	35.9	-0.6

### Average Verbal Score

High School	1993/94	1994/95	1995/96	1996/97	1997/98	% Change
Aptos High	492	505	519	500	521	4.2
Harbor High	525	529	530	522	553	5.9
San Lorenzo Valley High	533	545	533	542	531	-2.0
Santa Cruz High	544	536	547	551	559	1.5
Soquel High	499	520	534	530	530	0.0
Watsonville High	439	447	432	416	412	-1.0
County	501	510	513	505	516	2.2
State	484	488	490	490	491	0.2

*Source: California Department of Education, Office of Policy and Evaluation, 1999.*

*Quality of Life  
Indicator 32*

## Test Scores – SAT (Continued)

### Average Math Score

High School	1993/94	1994/95	1995/96	1996/97	1997/98	% Change
Aptos High	518	526	535	504	520	3.2
Harbor High	540	536	553	547	563	2.9
San Lorenzo Valley High	544	546	544	549	533	-2.9
Santa Cruz High	541	536	552	534	550	3.0
Soquel High	541	519	540	541	552	2.0
Watsonville High	464	467	463	443	433	-2.3
County	522	520	529	516	523	1.4
State	507	509	511	514	516	0.4

### Average Total Score

High School	1993/94	1994/95	1995/96	1996/97	1997/98	% Change
Aptos High	1,010	1,031	1,054	1,004	1,041	3.7
Harbor High	1,065	1,065	1,083	1,069	1,116	4.4
San Lorenzo Valley High	1,077	1,091	1,077	1,091	1,064	-2.5
Santa Cruz High	1,085	1,072	1,099	1,085	1,109	2.2
Soquel High	1,040	1,039	1,074	1,071	1,082	1.0
Watsonville High	903	914	895	859	845	-1.6
County	1,023	1,030	1,042	1,021	1,039	1.8
State	991	997	1,001	1,004	1,007	0.3

*Source: California Department of Education, Office of Policy and Evaluation, 1999.*

*Note: Total possible SAT score is 1600.*

*Quality of Life  
Indicator 33*

## Test Scores - STAR

The STAR Test provides a measure of academic performance of students in grades 3 through 11. It allows for local, state and national comparisons.

### Grade 3: National Percentage Rank, Santa Cruz

<b>Subject</b>	<b>1997/98</b>	<b>1998/99</b>	<b>% Change</b>
Reading	40	41	2.5
Math	48	52	8.3
Language	41	42	2.4
Spelling	33	36	9.1

### Grade 3: California

<b>Subject</b>	<b>1997/98</b>	<b>1998/99</b>	<b>% Change</b>
Reading	36	40	11.1
Math	42	49	16.7
Language	39	44	12.8
Spelling	38	43	13.2

*Source: California Department of Education, STAR District/ School Summary Report, 1999.*

*Note: The Standardized Testing and Reporting (STAR) program was authorized by Senate Bill (SB) 376 in October, 1997, and entails the administration of a multiple-choice test that allows comparisons to be made to a national sample of students.*

*The average student's National Percentile Rank (NPR) is shown above. For example, a student who scored a 56 was at the 56<sup>th</sup> percentile, and did better than 55 percent of the national sample.*

*Quality of Life  
Indicator 33*

## Test Scores – STAR (Continued)

### Grade 5: National Percentile Rank, Santa Cruz

<b>Subject</b>	<b>1997/98</b>	<b>1998/99</b>	<b>% Change</b>
Reading	46	45	-2.2
Math	47	49	4.3
Language	47	47	0.0
Spelling	36	37	2.8

### Grade 5: California

<b>Subject</b>	<b>1997/98</b>	<b>1998/99</b>	<b>% Change</b>
Reading	40	41	2.5
Math	41	45	9.8
Language	44	46	4.5
Spelling	38	40	5.3

*Source: California Department of Education, STAR District/ School Summary Report, 1999.*

*Quality of Life  
Indicator 33*

## Test Scores – STAR (Continued)

### Grade 7: National Percentile Rank, Santa Cruz

<b>Subject</b>	<b>1997/98</b>	<b>1998/99</b>	<b>% Change</b>
Reading	47	48	2.1
Math	46	49	6.5
Language	51	52	2.0
Spelling	39	41	5.1

### Grade 7: California

<b>Subject</b>	<b>1997/98</b>	<b>1998/99</b>	<b>% Change</b>
Reading	41	43	4.9
Math	45	47	4.4
Language	49	51	4.1
Spelling	42	43	2.4

*Source: California Department of Education, STAR District/ School Summary Report, 1999.*

*Quality of Life  
Indicator 33*

## Test Scores – STAR (Continued)

### Grade 9: National Percentile Rank, Santa Cruz

<b>Subject</b>	<b>1997/98</b>	<b>1998/99</b>	<b>% Change</b>
Reading	38	40	5.3
Math	51	56	9.8
Language	47	52	10.6
Science	45	46	2.2
Social Science	45	49	8.9

### Grade 9: California

<b>Subject</b>	<b>1997/98</b>	<b>1998/99</b>	<b>% Change</b>
Reading	34	34	0.0
Math	50	51	2.0
Language	47	48	2.1
Science	43	44	2.3
Social Science	42	43	2.4

*Source: California Department of Education, STAR District/ School Summary Report, 1999.*

*Quality of Life  
Indicator 33*

## Test Scores – STAR (Continued)

### Grade 11: National Percentile Rank, Santa Cruz

<b>Subject</b>	<b>1997/98</b>	<b>1998/99</b>	<b>% Change</b>
Reading	41	36	-12.2
Math	45	46	2.2
Language	43	42	-2.3
Science	48	44	-8.3
Social Science	57	54	-5.3

### Grade 11: California

<b>Subject</b>	<b>1997/98</b>	<b>1998/99</b>	<b>% Change</b>
Reading	37	36	-2.7
Math	46	48	4.3
Language	43	45	4.7
Science	44	45	2.3
Social Science	54	55	1.9

*Source: California Department of Education, STAR District/ School Summary Report, 1999.*

*Quality of Life  
Indicator 34*

## College Preparation Courses

Students should have access to the appropriate challenging courses to prepare for college acceptance and success.

### Percent of Students Enrolled in Selected College Prep classes, by District

<b>Intermediate Algebra II</b>	<b>1994/95</b>	<b>1995/96</b>	<b>1996/97</b>	<b>1997/98</b>	<b>1998/99</b>	<b>% Change</b>
Pajaro Valley Unified	14.4	11.7	24.0	26.8	22.8	-14.9
San Lorenzo Valley	47.5	26.0	33.3	2.8	81.9	2,825.0
Santa Cruz City High	30.6	32.3	20.2	22.8	20.6	-9.6
Santa Cruz County	22.9	22.7	22.3	20.8	28.1	35.1
California	27.8	29.2	28.1	26.6	27.3	2.6

<b>3<sup>rd</sup> / 4<sup>th</sup> Year Advanced Math</b>	<b>1994/95</b>	<b>1995/96</b>	<b>1996/97</b>	<b>1997/98</b>	<b>1998/99</b>	<b>% Change</b>
Pajaro Valley Unified	29.9	26.0	28.4	27.5	25.2	-8.4
San Lorenzo Valley	57.6	45.9	18.4	1.2	43.4	3,516.7
Santa Cruz City High	16.7	52.5	21.7	22.7	16.2	-28.6
Santa Cruz County	26.5	39.8	23.1	21.5	22.6	5.1
California	19.0	19.5	21.3	21.5	22.8	6.0

<b>1<sup>st</sup> Year Chemistry</b>	<b>1994/95</b>	<b>1995/96</b>	<b>1996/97</b>	<b>1997/98</b>	<b>1998/99</b>	<b>% Change</b>
Pajaro Valley Unified	21.4	25.6	19.6	23.9	22.5	-5.9
San Lorenzo Valley	18.8	18.7	17.6	19.2	16.8	-12.5
Santa Cruz City High	25.3	25.4	19.9	20.7	19.3	-6.8
Santa Cruz County	22.2	23.7	18.7	21.2	19.6	-7.5
California	21.1	21.7	22.1	21.7	21.6	-0.5

<b>1<sup>st</sup> Year Physics</b>	<b>1994/95</b>	<b>1995/96</b>	<b>1996/97</b>	<b>1997/98</b>	<b>1998/99</b>	<b>% Change</b>
Pajaro Valley Unified	8.5	10.7	13.7	12.3	11.2	-8.9
San Lorenzo Valley	10.3	6.5	8.1	8.2	8.2	0.0
Santa Cruz City High	10.2	10.2	10.8	10.2	8.7	-14.7
Santa Cruz County	9.2	9.6	11.2	10.5	9.3	-11.4
California	9.1	9.2	9.8	9.5	9.8	3.2

Source: California Department of Education, California Basic Educational Data System (CBEDS), 1999.

\* In 1996, the San Lorenzo Valley School District implemented a new type of college prep math curriculum.

*Quality of Life*  
*Indicator 34*

## College Preparation Courses (Continued)

Percent of Students Enrolled in Selected College Prep Courses, by Ethnicity

<b>Intermediate Algebra II</b>	<b>1994/95</b>	<b>1995/96</b>	<b>1996/97</b>	<b>1997/98</b>	<b>1998/99</b>	<b>% Change</b>
Caucasian	27.5	26.7	24.2	20.8	34.4	65.4
Latino	13.3	14.8	19.3	20.4	18.4	-9.8
Asian	35.8	33.9	34.9	33.8	40.0	18.3
African American	13.9	19.2	14.8	11.4	15.7	37.7
Filipino	14.8	21.7	23.0	25.8	22.4	-13.2
American Indian	39.4	11.8	12.8	3.6	27.3	658.3
Pacific Islander	20.0	44.4	11.8	8.3	11.8	42.2

<b>3<sup>rd</sup> / 4<sup>th</sup> Year Advanced Math</b>	<b>1994/95</b>	<b>1995/96</b>	<b>1996/97</b>	<b>1997/98</b>	<b>1998/99</b>	<b>% Change</b>
Caucasian	32.3	50.4	26.3	24.9	26.8	7.6
Latino	13.3	18.4	16.9	15.4	15.5	0.6
Asian	56.8	67.0	54.1	43.8	46.9	7.1
African American	15.2	39.4	18.5	15.9	6.7	-57.9
Filipino	31.5	38.3	21.6	16.7	25.4	52.1
American Indian	15.2	44.1	2.6	0.0	12.1	100.0
Pacific Islander	30.0	11.1	23.5	20.8	17.6	-15.4

<b>Chemistry</b>	<b>1994/95</b>	<b>1995/96</b>	<b>1996/97</b>	<b>1997/98</b>	<b>1998/99</b>	<b>% Change</b>
Caucasian	26.3	27.9	22.8	25.2	23.5	-6.7
Latino	14.1	15.9	12.3	14.8	13.6	-8.1
Asian	26.3	34.9	30.2	33.8	26.2	-22.5
African American	19.0	17.3	9.9	15.9	6.7	-57.9
Filipino	16.7	21.7	18.9	18.2	31.3	72.0
American Indian	21.2	20.6	2.6	7.1	15.2	114.1
Pacific Islander	20.0	5.6	11.8	4.2	5.9	40.5

Source: California Department of Education, California Basic Educational Data System (CBEDS), 1999.

*Quality of Life  
Indicator 34*

## College Preparation Courses (Continued)

Percent of Students Enrolled in Selected College Prep Courses,  
by Ethnicity, continued

<b>Physics 1st Year</b>	<b>1994/95</b>	<b>1995/96</b>	<b>1996/97</b>	<b>1997/98</b>	<b>1998/99</b>	<b>% Change</b>
Caucasian	11.0	11.9	13.5	12.9	11.2	-13.2
Latino	5.1	5.0	7.0	5.8	5.9	1.7
Asian	22.1	23.9	29.4	23.8	22.3	-6.3
African American	5.1	4.8	8.6	8.0	5.6	-30.0
Filipino	11.1	6.7	8.1	7.6	10.4	36.8
American Indian	3.0	2.9	0.0	0.0	0.0	0.0
Pacific Islander	20.0	0.0	5.9	33.3	0.0	-100.0

*Source: California Department of Education, California Basic Educational Data System (CBEDS), 1999.*

*Quality of Life  
Indicator 34*

## College Preparation Courses (Continued)

### Percent of Graduates Completing College Prep Courses by District

<b>School District</b>	<b>1994/95</b>	<b>1995/96</b>	<b>1996/97</b>	<b>1997/98</b>	<b>% Change</b>
Pajaro Valley Unified	28.5	26.6	26.1	28.8	10.3
San Lorenzo Valley Unified	58.2	60.6	56.1	52.9	-5.7
Santa Cruz City Schools	32.2	43.9	36.6	40.4	10.4
County	33.4	38.3	33.9	35.9	5.9
State	34.9	35.4	36.0	36.6	1.7

### Percent of Graduates Completing College Prep Courses by Gender

<b>Gender</b>	<b>1994/95</b>	<b>1995/96</b>	<b>1996/97</b>	<b>1997/98</b>	<b>% Change</b>
Males	32.2	38.6	29.2	30.7	5.1
Females	36.6	38.0	38.4	40.4	5.2

### Percent of Graduates Completing College Prep Courses by Ethnicity

<b>Ethnicity</b>	<b>1994/95</b>	<b>1995/96</b>	<b>1996/97</b>	<b>1997/98</b>	<b>% Change</b>
Caucasian	43.4	49.3	43.2	46.6	7.9
Latino	15.1	15.1	15.8	15.7	-0.6
Asian	61.0	43.8	68.1	63.3	-7.0
African American	20.0	30.8	25.8	28.0	8.5
Filipino	21.7	28.6	25.0	32.0	28.0
American Indian	25.0	22.0	33.3	6.7	-79.9
Pacific Islander	100.0	8.3	28.6	28.6	0.0

*Source: California Department of Education, California Basic Educational Data System (CBEDS), 1999.*

*Note: A-F Course Enrollment or College Prep Courses are defined as: courses accepted by the University of California and the California State University system as meeting their admission standards. This includes 1 year of U.S. history, 4 years of English, 3 years of mathematics, 1 year of laboratory science, 2 years of foreign language, and 4 years of college preparatory elective courses.*

*Quality of Life  
Indicator 35*

## College Attendance

Measures student enrollment as well as the demographic characteristics of graduates.

### Cabrillo College Enrollment

Age	Spring 1994	Spring 1995	Spring 1996	Spring 1997	Spring 1998	% Change
14-20	2,434	2,543	2,378	2,385	3,241	35.9
21-25	3,652	3,629	3,419	3,428	2,932	-14.5
26-30	1,793	1,857	2,063	1,989	1,813	-8.8
31-40	2,596	2,545	2,750	2,506	2,264	-9.7
41-50	1,752	1,726	2,081	2,079	1,871	-10.0
51-60	504	541	698	776	685	-11.7
61+	315	327	418	456	326	-28.5
<b>Average Age</b>	31	31	32	32	31	-3.1
<b>Median Age</b>	27	26	28	28	27	-3.6

### Cabrillo College Graduation Numbers

Cabrillo Graduates	1993/94	1994/95	1995/96	1996/97	1997/98	% Change
Associate of Arts	210	274	288	329	361	9.7
Associate of Science	222	217	255	226	223	-1.3
Certificates of Proficiency	115	143	102	109	108	-0.9
<b>Total</b>	547	634	645	664	692	4.2

### Cabrillo Graduates by Ethnicity

Ethnicity	1993/94	1994/95	1995/96	1996/97	1997/98	% Change
Caucasian	77.7	77.8	74.0	70.2	71.8	2.3
Asian	6.9	6.9	6.0	8.0	6.0	-25.0
African American	0.9	0.9	1.9	1.1	1.3	18.2
Latino	14.1	11.2	15.2	18.8	18.0	-4.3
American Indian/Alaskan	0.2	1.3	1.7	1.2	1.5	25.0
Other	0.2	1.6	0.9	0.8	1.3	62.5
Unknown	0.2	0.3	0.3	0.0	0.1	100.0
<b>% Graduates of Color</b>	22.3	22.2	26.0	29.8	28.2	-5.4

Source: Cabrillo College, Office of Institutional Research, 1999.

*Quality of Life*  
*Indicator 35*

## College Attendance (Continued)

### University of California, Santa Cruz, Enrollment

<b>Number of Enrollees</b>	<b>1994/95</b>	<b>1995/96</b>	<b>1996/97</b>	<b>1997/98</b>	<b>1998/99</b>	<b>% Change</b>
Undergraduate	9,099	8,876	9,159	9,570	9,932	3.8
Graduate	1,018	1,047	1,056	1,068	1,094	2.4
Total	10,117	9,923	10,215	10,638	11,026	3.6

### University of California, Santa Cruz, Graduation

<b>Degrees</b>	<b>1994/95</b>	<b>1995/96</b>	<b>1996/97</b>	<b>1997/98</b>	<b>% Change</b>
Undergraduate	2,711	2,298	2,339	2,205	-5.7
Graduate	274	304	214	243	13.6
Doctorate	99	97	82	91	11.0
Total	3,084	2,699	2,635	2,539	-3.6

*Source: University of California Santa Cruz, Enrollment Fact Sheets, 1999*

*Quality of Life  
Indicator 36*

## High School Equivalency

Adult schools and GED provide an accessible route for non high school graduates to return to school for skill improvement to get better jobs or continue education.

### Number of Adults Receiving High School Diplomas and GED

<b>Pajaro Valley Joint Adult School District</b>	<b>1993/94</b>	<b>1994/95</b>	<b>1995/96</b>	<b>1996/97</b>	<b>1997/98</b>	<b>% Change</b>
Students Passing GED	250	315	227	171	168	-1.8
Adult Diplomas Awarded	18	26	22	9	9	0.0

<b>Santa Cruz City High School District</b>	<b>1993/94</b>	<b>1994/95</b>	<b>1995/96</b>	<b>1996/97</b>	<b>1997/98</b>	<b>% Change</b>
Students Passing GED	257	192	224	179	134	-25.0
Adult Diplomas Awarded	29	16	24	20	20	0.0

*Source: California Department of Education, California Basic Educational Data System (CBEDS), 1999.*

*Note: An adult high school diploma is for persons 18 years and older and requires 17 hours of class time for 1 unit. A GED is the General Education Certificate. The materials are purchased through the Adult Education Office. One can study at his/her own pace and take the test when it is offered.*

*Quality of Life  
Indicator 37*

## Adult Education Course Enrollments

Welfare reform and job market changes require access and participation to adult education opportunities.

### Pajaro Valley Joint Unified School District

	1994/95	1995/96	1996/97	1997/98	% Change
Elementary Basic Education	534	208	312	1,267	306.1
High School Skills Independent Study	1,100	446	562	6,303	1021.5
English as a Second Language	2,677	2,046	3,139	9,960	217.3
Programs for Immigrants	200	147	322	271	-15.8
Substantially Handicapped	47	23	77	384	398.7
Vocational	427	203	277	909	228.2
Parent Education	168	66	97	1,059	991.8
Programs for Older Adults	525	283	594	3,990	571.7
Health and Safety Education	31	16	32	36	12.5
Enrollees in Non-Approved Courses	893	250	711	613	-13.8
<b>Total</b>	<b>6,602</b>	<b>3,688</b>	<b>6,123</b>	<b>24,792</b>	<b>304.9</b>

*Quality of Life  
Indicator 37*

## Adult Education Course Enrollments (Continued)

### Santa Cruz City High School District

	1994/95	1995/96	1996/97	1997/98	% Change
Elementary Basic Education	60	129	0	676	100.0
High School Skills Independent Study	197	831	878	2,275	159.1
English as a Second Language	1,604	1,546	2,438	5,116	109.8
Programs for Immigrants	48	52	55	38	-30.9
Substantially Handicapped	140	261	328	1536	368.3
Vocational	678	912	653	121	-81.5
Parent Education	562	505	310	2825	811.3
Programs for Older Adults	610	935	909	10464	1051.2
Health and Safety Education	733	718	965	1080	11.9
Enrollees in Non-Approved Courses	731	1,013	1,920	1,424	-25.8
Home Economics Education	97	189	125	206	64.8
Gain Students	7	6	9	69	666.7
<b>Total</b>	<b>5,467</b>	<b>7,097</b>	<b>8,590</b>	<b>25,830</b>	<b>200.7</b>

*Source: Santa Cruz County Office of Education, 1999.*

*Note: In 1997/98, programs began to double count, or duplicate, enrollments of people that were taking more than one class, causing the dramatic jump in enrollment figures.*

*Quality of Life  
Indicator 38*

## Job Training

Job training or retraining is a crucial factor in welfare reform as well as responding to local job market changes.

### JTPA Program Enrollment

<b>Type of Program</b>	<b>1994/95</b>	<b>1995/96</b>	<b>1996/97</b>	<b>1997/98</b>	<b>1998/99</b>	<b>% Change</b>
Adult/Older Worker Programs	317	550	742	566	527	-6.9
Summer Youth Employment Training Program	463	800	500	600	642	7.0
Year-round Youth Program	245	384	426	255	221	-13.3
Dislocated Worker Programs	267	214	547	572	429	-25.0
Other: Welfare to Work, CalWorks, Youth Education Coordination Grant	-	-	509	422	493	16.8
<b>Total</b>	<b>1,292</b>	<b>1,948</b>	<b>2,724</b>	<b>2,415</b>	<b>2,312</b>	<b>-4.3</b>

*Source: Human Resources Agency, Job Training Partnership Act, 1999.*

*Quality of Life  
Indicator 39*

## Library Use

Access to books, online information and materials is required for the continuing education of a literate community.

### Circulation Statistics

<b>Santa Cruz City and County</b>	<b>1994/95</b>	<b>1995/96</b>	<b>1996/97</b>	<b>1997/98</b>	<b>1998/99</b>	<b>% Change</b>
Service population	208,850	208,725	207,000	207,800	213,600	2.8
Registered borrowers	127,900	114,518	125,594	138,500	150,000	8.3
Area square miles	436.2	436.2	436.2	436.2	436.2	0.0
Total outlets	10	9	8	9	11	22.2
Total items circulated	1,294,732	1,330,223	1,306,640	1,487,293	1,516,540	2.0
Total per capita circulation	6.2	6.4	6.3	7.2	7.1	-1.4
Hours Open / 100 Population	7.4	7.4	6.6	11.3	11.3	0.0

<b>City of Watsonville</b>	<b>1994/95</b>	<b>1995/96</b>	<b>1996/97</b>	<b>1997/98</b>	<b>1998/99</b>	<b>% Change</b>
Service population	33,800	33,800	36,650	42,350	39,200	-7.4
Registered borrowers	29,671	29,671	34,297	38,230	42,459	11.1
Area square miles	5.8	5.8	5.8	6.2	6.2	0.0
Total outlets	1	1	2	2	2	0.0
Total items circulated	274,387	295,332	309,169	315,097	320,045	1.6
Total per capita circulation	8.1	8.7	8.4	7.4	8.2	10.8
Hours Open / 100 Population	8.3	8.3	9.8	10.0	10.7	7.0

*Source: Santa Cruz Public Libraries, Watsonville Public Library, California Library Statistics, 1999.*

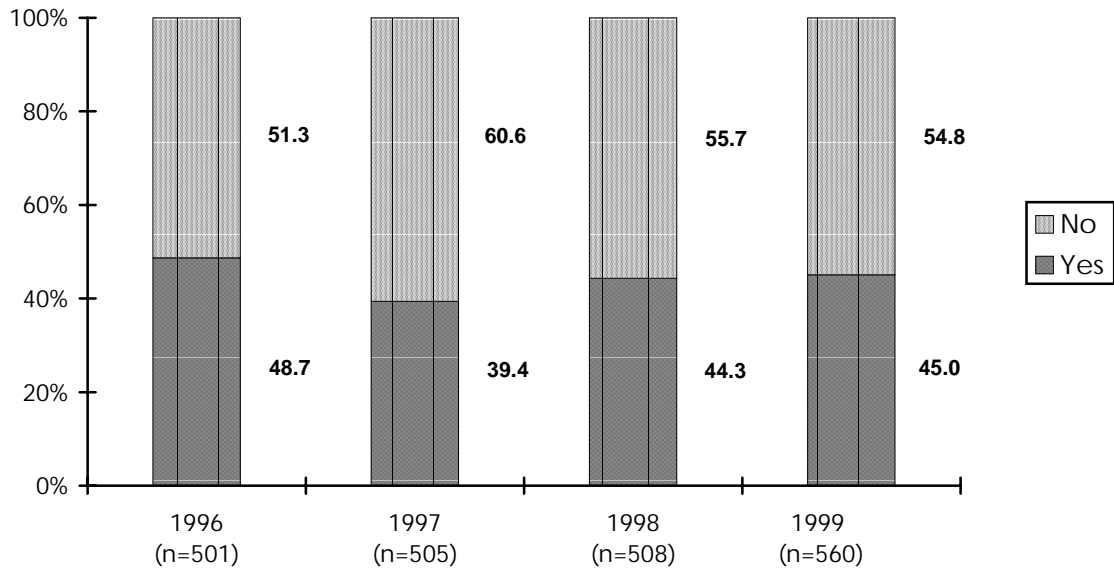
*Note: The Santa Cruz City-County Library System won a ballot measure in November, 1996 which provides additional tax support. The money became available on July 1, 1997. At that time, the City-County Library System increased open hours and began a general library upgrade.*

*Quality of Life  
Indicator 39*

## **Library Use (Continued)**

Measures regular use of library by community.

*Do you use the library on a regular basis?*



*Source: Santa Cruz County Community Assessment Project, Telephone Survey.*

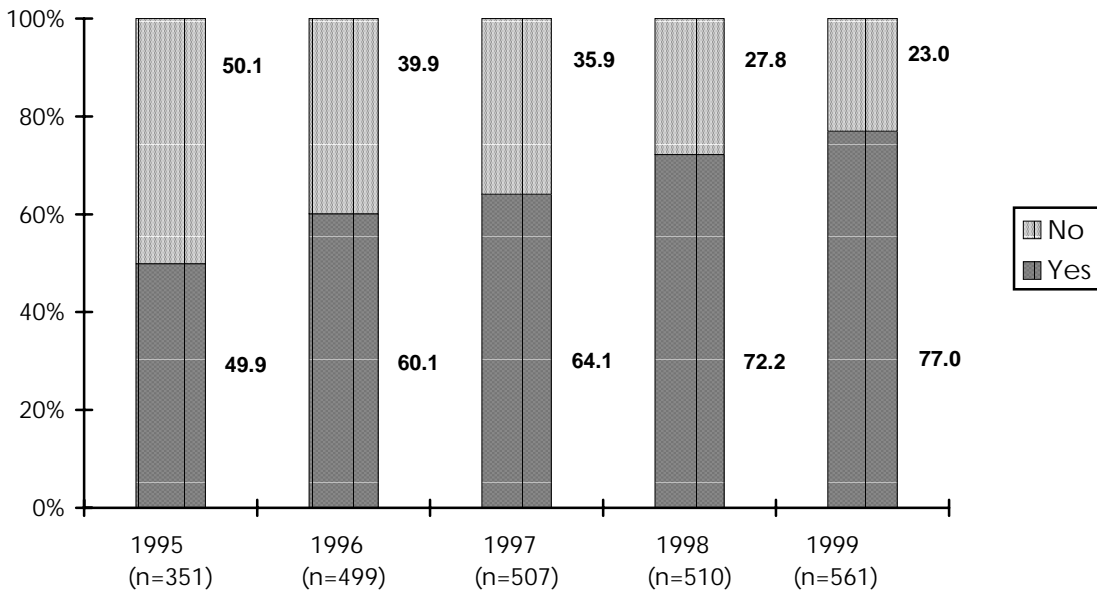
*Note: Due to low numbers the “don’t know” response is not included in the graph.*

*Quality of Life  
Indicator 40*

**Computer Use**

Access and use of technology is becoming a basic job and life skill.

*Does at least one person in your household use computers?*



*Is the computer used at:*

Responses	1996	1997	1998	1999
Home	84.4	81.2	82.1	86.4
Work	70.2	65.2	66.3	65.8
School	70.2	43.1	42.4	44.8
Library	51.2	24.3	23.9	21.0

*Source: Santa Cruz County Community Assessment Project, Telephone Survey.*

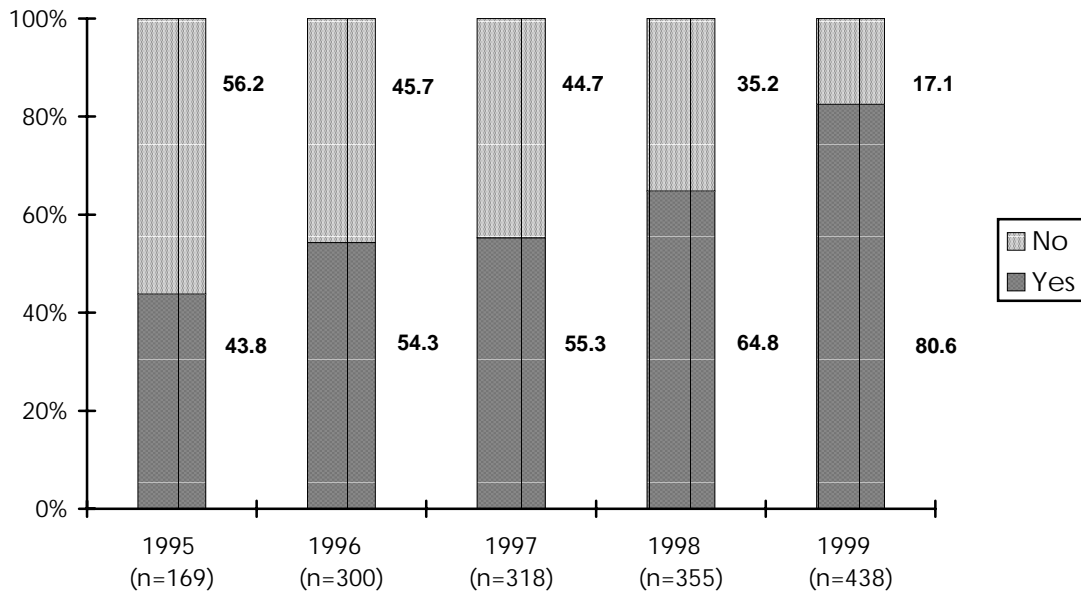
*Note: Respondents gave multiple responses as to where the computer was used.*

*Quality of Life  
Indicator 40*

## **Computer Use (Continued)**

Measures use of on-line services by residents.

*Are you using on-line services?*



*Source: Santa Cruz County Community Assessment Project, Telephone Survey.*

*Note: Due to low numbers the "don't know" response is not included in the graph.*

*Quality of Life  
Indicator 41*

## Educational Attainment

### Regional, State and National Percent Comparisons

Attainment Level	San Lorenzo Valley	Santa Cruz	Watsonville	Santa Cruz County	California	National
Less than 9th Grade	1.4	6.6	30.1	9.4	11.6	10.4
9th to 12th Grade, No Diploma	6.9	7.7	16.3	8.7	12.6	14.4
High School Graduate (Includes Equivalency)	20.5	17.9	21.7	19.0	22.3	30.0
Some College, No Degree	30.2	23.9	16.3	24.6	22.6	18.7
AA Degree	11.1	8.7	4.9	8.5	7.9	6.2
BA Degree	22.2	21.9	7.2	19.3	15.3	13.1
Graduate or Professional Degree	7.8	13.4	3.5	10.4	8.1	7.2
Percent of High School Graduates or higher	91.7	85.7	53.6	81.9	76.2	75.2
Percent of BA and higher	30.0	35.2	10.7	29.7	23.4	20.3
Number of Persons 25 or older	13,274	29,814	18,030	147,964	18,695,499	158,868,436

Source: U.S. Census Bureau, 1990.

 **New data not available.**

## Quality of Life Indicator 42

# Literacy

The State and National Adult Literacy Survey, carried out in 1992, measured average proficiency in performing everyday tasks. Proficiency levels correlate closely with education attainment and income earning capacity. On average, people that scored at Level Two (275) or below made less than \$30,000 a year.

### City, County and State Literacy Estimates, 1996

<b>Jurisdiction</b>	<b>% persons at Level 1 (0 - 225)</b>	<b>% persons at Level 1 &amp; 2 (0 - 275)</b>	<b>Average Literacy Score</b>
Santa Cruz County	18.0	35.0	280
Watsonville	39.0	68.0	224
Santa Cruz	15.0	32.0	289
Monterey County	27.0	50.0	258
Salinas	33.0	60.0	240
Monterey	15.0	31.0	291
Pacific Grove	13.0	27.0	294
State	24.0	46.0	266
Nationwide *	23.0	51.0	267

*Source: California Department of Education, Adult Education Office, 1992 State Adult Literacy Survey, Portland State University, Synthetic Estimates of Adult Literacy Proficiency, 1996.*

*Note: The National and State Adult Literacy surveys assess adults' literacy skills in English based on their performance on diverse tasks, similar to the type of demands adults encounter in their daily lives. The three types of literacy tested are **Prose Literacy, Document Literacy, and Quantitative Literacy**. The above scores are averages of the scores received for the three types of literacy. There are five levels of proficiency, ranging from 0 to 500.*

*Literacy surveys are conducted using a random sample of the population, only excluding those individuals who have no proficiency in English.*

\* 1992

*Quality of Life  
Indicator 42*

## Literacy (Continued)

Statewide Literacy Levels, by Educational Attainment, 1992

<b>Level of Education Attained</b>	<b>Prose Literacy Ave. Score</b>	<b>Document Literacy Ave. Score</b>	<b>Quantitative Literacy Ave. Score</b>
0 to 8 grade	152	145	148
9 to 12 grade	225	219	225
High School Diploma	264	257	262
GED	263	259	261
Some Post Secondary	297	292	297
4 year College Degree	331	322	331

*Source: Adult Education Office, State Adult Literacy Survey, 1992.*

