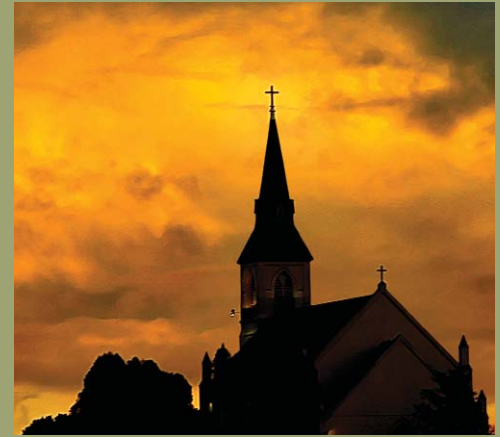


# Comprehensive Report 2006

Santa Cruz County



# Community Assessment Project



YEAR 12

The CAP reports summarize hundreds of issues to help identify and assess what is unique about Santa Cruz County using the most recent data available, including established sources as well as an original survey.

The information in each CAP report is intended for use in your own services and products, including other reports and proposals and as a baseline for performance systems. Display graphics are available for much of the data, as are trained presenters who can speak to groups about the information within and behind this report.

# Community Assessment Project

YEAR 12

## Comprehensive Report 2006

Santa Cruz County



### Community Assessment Project Products

#### Summary Report

Additional copies of this report are available for \$25 each from:

**United Way of Santa Cruz County**  
1220 41st Ave., Capitola, CA 95010  
831 479 5466

This entire report, and past reports, are also available at the Applied Survey Research Web site:  
[www.appliedsurveyresearch.org](http://www.appliedsurveyresearch.org)

#### Customized Reports

Data in this report can be mixed and matched to help agencies determine their clients' needs. Special reports can be created to reflect targeted populations, and cross-comparisons can be established with data from other projects. Customized reports, tailored to geographic and demographic specifications, are available by calling Applied Survey Research at **831 728 1356**.

#### Speakers Bureau

Expert speakers are available at no charge to speak to clubs and community groups about any aspect of the Community Assessment Project. To schedule a speaker call the United Way of Santa Cruz County at **831 479 5466**.



# *Life in Santa Cruz County* *Year 12, 2006*

*Community Assessment Project*  
Comprehensive Report



Photographs	Shmuel Thaler and Bill Lovejoy, Santa Cruz Sentinel
Report Design	Holly Maclure, Applied Survey Research
Cover Design	Applied Survey Research and Sheffield Graphics
Production	Dominican Hospital, Communications and Marketing Department
	Print Services

## Community Assessment Project Products

The Community Assessment Project's Year 12/2006 Comprehensive Report – hundreds of pages of data and survey results – is available as a book for \$25.00 at the United Way Office, 1220 41<sup>st</sup> Avenue, Capitola, CA 95010. Tel: 831-479-5466 Fax: 831-479-5477.

Customized reports, tailored to geographic, issue related, and demographic specifications, are available by contacting Applied Survey Research.

Also available at no charge is the sixteen-page color magazine (Summary Report) of the Year Twelve, Community Assessment Project findings.

The report is also available on the World Wide Web at: [www.santacruzcountycap.org](http://www.santacruzcountycap.org).

## About the Researcher



Applied Survey Research (ASR) is a nonprofit, social research firm dedicated to helping people build better communities by collecting meaningful data, facilitating information-based planning and developing custom strategies. The firm was founded on the principle that community improvement initiative sustainability and program success are closely tied to assessment of needs, evaluation of community goals and development of appropriate responses.

The Community Assessment Project is a prime example of a comprehensive evaluation of the needs of the community. Its goal is to stimulate dialogue about growing trends and to encourage informed strategies for shaping future policies and effective actions.

### **Watsonville Office:**

55 Brennan Street  
Watsonville, CA 95076  
Tel: 831-728-1356 - Fax: 831-728-3374  
[www.appliedsurveyresearch.org](http://www.appliedsurveyresearch.org)

### **San Jose Office:**

991 West Hedding Street, Suite 102  
San Jose, CA 95126  
Tel: 408-247-8319 – Fax: 408-260-7749  
[www.appliedsurveyresearch.org](http://www.appliedsurveyresearch.org)

# Table of Contents

Community Assessment Project Overview .....	vii	Education Issues.....	51
Legend .....	xiii	Education Summary.....	51
Suggested Uses of this Report.....	xiii	Indicator 18 Education Enrollment.....	55
Acknowledgments .....	xvi	Indicator 19 Student Demographics .....	56
2006 Community Goals & Heroes .....	xviii	Indicator 20 Elementary School Absenteeism .....	57
Community Heroes 1996-2005 .....	xxi	Indicator 21 Expenditures Per Pupil.....	58
Demographic Profile.....	1	Indicator 22 Test Scores – STAR (California Standards Test).....	59
Economic Issues .....	11	Indicator 23 Test Scores – Academic Performance Index (API).....	63
Economic Summary.....	11	Indicator 24 Test Scores – Adequate Yearly Progress (AYP) Report.....	67
Indicator 1 Economic Well-being.....	15	Indicator 25 Test Scores – California High School Exit Exam	
Indicator 2 Retail Sales .....	17	(CAHSEE).....	73
Indicator 3 Building Permit Valuation.....	20	Indicator 26 Test Scores - SAT .....	75
Indicator 4 New Business .....	21	Indicator 27 Test Scores - ACT.....	77
Indicator 5 Agricultural Production.....	22	Indicator 28 English Proficiency .....	78
Indicator 6 Tourism .....	23	Indicator 29 Top Languages Spoken.....	79
Indicator 7 Net Job Growth .....	24	Indicator 30 Ethnic Representation.....	80
Indicator 8 Annual Unemployment Rates.....	26	Indicator 31 Bilingual Education.....	82
Indicator 9 Job Opportunities.....	27	Indicator 32 Expulsions .....	83
Indicator 10 Annual Payroll .....	29	Indicator 33 High School Dropout Rates.....	84
Indicator 11 Median Hourly Wages for Selected Occupations.....	31	Indicator 34 Educational System.....	87
Indicator 12 Household Income.....	32	Indicator 35 Substance Abuse Prevention Programs .....	92
Indicator 13 Self-Sufficiency Income Standards .....	35	Indicator 36 School Safety .....	93
Indicator 14 Housing Affordability.....	36	Indicator 37 Parent Participation in Schools.....	94
Indicator 15 Poverty Level.....	44	Indicator 38 Child Care.....	95
Indicator 16 Temporary Assistance for Needy Families (TANF) /		Indicator 39 College Preparation Courses .....	99
CalWORKs.....	47	Indicator 40 Community College Attendance.....	100
Indicator 17 Child Support Collections .....	49	Indicator 41 University Attendance.....	101
		Indicator 42 Adult Education Course Enrollments .....	102
		Indicator 43 Job Training.....	104
		Indicator 44 Educational Attainment .....	105
		Indicator 45 Library Use.....	108
		Indicator 46 Computer Use and Proficiency.....	110

Health Issues.....	111	Indicator 79	Police Officers Per Capita.....	185
Health Summary.....	111	Indicator 80	Police Response.....	186
Indicator 47 Access to Health Care.....	114	Indicator 81	Law Enforcement Effectiveness.....	187
Indicator 48 Low Income Health Care.....	116	Indicator 82	Fire Response.....	189
Indicator 49 Health Insurance.....	119	Indicator 83	Family Violence.....	190
Indicator 50 Dental Care.....	123	Indicator 84	Child Abuse.....	196
Indicator 51 Fluoridation.....	126	Indicator 85	Elder Abuse.....	198
Indicator 52 Births.....	127	Indicator 86	Foster Care Placements.....	199
Indicator 53 Teen Births.....	128	Indicator 87	Driving Under the Influence.....	200
Indicator 54 Prenatal Care Initiated in 1st Trimester.....	130	Indicator 88	Drug Arrests.....	203
Indicator 55 Birth Weight.....	132	Indicator 89	Disaster Preparedness.....	205
Indicator 56 Immunization Levels.....	133	Indicator 90	Fire or Medical Emergency Preparedness.....	208
Indicator 57 Unintentional Injuries.....	135	Social Environment Issues.....	211	
Indicator 58 Intentional Injuries.....	136	Social Environment Summary.....	211	
Indicator 59 Alcohol Use.....	137	Indicator 91 Voting.....	214	
Indicator 60 Availability of Alcohol.....	139	Indicator 92 Racism and Discrimination.....	218	
Indicator 61 Acceptance of Marijuana Use.....	140	Indicator 93 Hate Crimes.....	223	
Indicator 62 Tobacco Use.....	142	Indicator 94 Basic Needs.....	224	
Indicator 63 Current Substance Use by Students.....	144	Indicator 95 Children Receiving Free or Reduced Cost Meals.....	225	
Indicator 64 Mental Health.....	146	Indicator 96 Homeless.....	226	
Indicator 65 Physical Health.....	147	Indicator 97 People Served by Food Bank.....	233	
Indicator 66 Health Promotion.....	148	Indicator 98 Volunteerism / Charitable Giving.....	234	
Indicator 67 Fruit and Vegetable Consumption.....	149	Indicator 99 People with Disabilities.....	237	
Indicator 68 Physical Fitness - Youth.....	150	Indicator 100 Youth Activities.....	248	
Indicator 69 Diabetes.....	151	Indicator 101 Quality of Life.....	250	
Indicator 70 Nutritional Status / Obesity.....	153	Natural Environment Issues.....	253	
Indicator 71 Reported Communicable Diseases.....	155	Natural Environment Summary.....	253	
Indicator 72 Suicides.....	157	Indicator 102 Concern for the Environment.....	256	
Indicator 73 Leading Causes of Death.....	158	Indicator 103 Habitat Preservation.....	257	
Public Safety Issues.....	163	Indicator 104 Open Space.....	258	
Public Safety Summary.....	163	Indicator 105 Land Trust – Acreage.....	265	
Indicator 74 Crime Rate.....	167	Indicator 106 State Park Acreage.....	267	
Indicator 75 Jail Population Characteristics.....	174	Indicator 107 Miles of Recreation Trails.....	268	
Indicator 76 Juvenile Crime.....	176	Indicator 108 Park Use.....	269	
Indicator 77 Juvenile Hall Admissions.....	179	Indicator 109 Farmland.....	273	
Indicator 78 Concern about Crime / Neighborhood Safety.....	180	Indicator 110 Pesticide Use.....	277	

Indicator 111 Coastal Wetlands .....278  
Indicator 112 Health of County Waterways.....279  
Indicator 113 Water Quality .....281  
Indicator 114 Beach Warnings and Closures .....283  
Indicator 115 Water Use Reduction.....284  
Indicator 116 Non-Agricultural Water Use.....286  
Indicator 117 Air Quality .....288  
Indicator 118 Motor Vehicle Registrations .....291  
Indicator 119 Roadway Congestion .....292

Indicator 120 Alternative Transportation ..... 293  
Indicator 121 Endangered Species ..... 295  
Indicator 122 Ecological Restoration and Access Projects ..... 298  
Indicator 123 Waste Reduction..... 300  
Appendices .....303  
Appendix I Santa Cruz County Telephone Survey Results, 2005..... 303  
Appendix II Significance Testing Results..... 323

# Community Assessment Project Overview

Over the past twelve years, a consortium of public and private health, education, human service, and civic organizations convened by the United Way of Santa Cruz County have sponsored the Community Assessment Project of Santa Cruz County (CAP), a collaborative project to measure and improve the quality of life in Santa Cruz County over this twelve year period.

The goal of CAP is to continually improve the quality of life for Santa Cruz County residents by:

- raising public awareness of human needs, changing trends, emerging issues, and community problems;
- providing accurate, credible and valid information on an ongoing basis to human service planners, and those providing funds;
- providing information for individual institutions to guide decision-making about creation, management and redesign of programs; setting community goals using measurable quality of life indicators that will lead to positive healthy development for individuals, families, and communities; and
- supporting and assisting with the establishment of collaborative action plans to achieve the community goals.

The Community Assessment Project's philosophy, envisioned by its founders and steering committee, is that an organized, collaborative, community-wide approach could positively affect important aspects of community life so that growth and change would not be left to chance and serendipity. The CAP Steering Committee has attempted to provide the most relevant insight about the needs of residents in order to point the community toward specific initiatives that will positively impact all residents.

Applied Survey Research (ASR), a not-for-profit social research firm, was originally contracted by the United Way to incorporate best practices from other assessment efforts across the nation into a community assessment model that would provide public and private

interests with clear information about past trends and current realities. Under the guidance of the CAP Steering Committee, ASR continues to manage the project, collecting secondary (pre-existing) data and conducting the annual community survey through 2003 and a bi-annual community survey after 2003 for primary (original) data. The CAP, one of the originators of community report cards twelve years ago, continues to be recognized for its community involvement, sustainability, and methodology. One of the successes of the CAP has been the implementation of annual measurement and reporting.

We wish to acknowledge all of those individuals serving on the Steering Committee whose commitment of time, resources, and expert counsel have guided the CAP over the past twelve years. A project of this scale requires financial support. A special thank you is extended to the generous financial sponsors of the CAP. (See the lists of Steering Committee Members and CAP Sponsors later in this section.)

## Model Summary

The CAP community assessment model, now implemented for its twelfth year, provides a comprehensive view of the quality of life in Santa Cruz County. It is based on credible primary data and secondary data that are gathered for a series of indicators in six areas: Economy, Education, Health, Public Safety, the Natural Environment, and the Social Environment. The Comprehensive Report is a tool for concerned citizens from the private and public sectors to come together to review the numbers and turn them into a picture of where our County is headed. While the Comprehensive Report is the culmination of one year's activity, it outlines the trends over time and helps to lay the groundwork for planning and community action.

The CAP has nurtured and encouraged a common community focus by establishing Community Goals for improvement. There are several goals for each of the six topical areas of Economy, Education, Health, Public Safety, the Natural Environment, and the Social Environment. Progress toward these goals has been tracked each year

through measurable quality of life indicators. An analysis of trends towards the achievement of the Community Goals is presented as summaries at the beginning of the subject chapters of the Comprehensive Report.

As mentioned previously, one of the primary purposes of CAP is to encourage collaborative community action that will positively impact the Community Goals. The Committee is pleased to note that community action has occurred at the individual organizational level as well as the community group level over this twelve-year period.

Early in the CAP findings, the Steering Committee found that Santa Cruz County youth were using drugs and alcohol above state and national averages. To redirect youthful experimentation away from drugs and alcohol, Together for Youth/Unidos Para Los Jovenes was convened and began its outreach and educational programs.

Another collaborative created due to CAP findings is Go for Health!. The Go for Health! goals are to increase healthy eating and regular physical activity for all children and youth in Santa Cruz County, and reduce the incidence of those who were obese or overweight. CAP data showed an alarming number of local children and youth who were overweight and obese, and in order to address this public health crisis, the Go for Health! collaborative was created. Go for Health! has a five year plan to promote healthy eating and regular physical activity, and has over 150 member organizations working to achieve the 24 outcomes set forth in the plan. The Go for Health! plan can be read at [www.goforhealth.org](http://www.goforhealth.org).

To support the CAP goal: Students will graduate from high school job-ready or prepared for higher education, the Santa Cruz County Children's Network (Network) developed the Got School? project. The mission of the Santa Cruz County Children's Network is to improve opportunities for all young people and their families. By focusing on the early years of schooling, they hope to help students and their families bond with their schools and continue this bond as they move through their education.

CAP results regarding housing and homelessness in Santa Cruz County led to the development of the Homeless 2000 Committee. This committee convened to gain a deeper understanding of homelessness in Santa Cruz County by commissioning an in-depth Homeless 2000 census and Needs Assessment. The final report was released in August 2000, and that data has been critical in securing additional funds and other resources to further study and service homeless persons.

In March of 2005, Santa Cruz County conducted the 2005 Santa Cruz County Homeless Census as part of a U.S. Department of Housing and Urban Development (HUD) mandate that every community conduct an enumeration of their street homeless every two years. In addition to providing Santa Cruz County with an updated census of the homeless population, this study enabled the County to track the progress of homeless services in eliminating homelessness, and to identify trends within the County's homeless population between 2000 and 2005. This Census will take place again in March of 2006.

Throughout the years of CAP surveys, we found that thousands of families were without access to regular medical and dental care. Latinos especially went without these services. The Central Coast Alliance for Health (Alliance) as it is now known, became the HMO for Medi-Cal eligible individuals and improved access to health care. More recently, First Five Santa Cruz, the County of Santa Cruz, Community Foundation, United Way, Alliance, hospitals and others have joined together in formation of the Healthy Kids Health Plan to provide health insurance to children.

The CAP has annually honored community heroes, special individuals whose efforts help move Santa Cruz County toward the achievement of the community goals. These true-life heroes can be found throughout the community and are wonderful examples of making Santa Cruz County a better place to live. A special thank you goes to the Santa Cruz Sentinel, our local newspaper, for sponsoring the selection of the annual Community Heroes (see the lists of both past and present CAP Community Heroes at the end of this section).

## Quality of Life Indicators

The CAP community assessment model relies on indicators as the primary measures to illustrate the status of a system or issue that might otherwise be too large and complex to understand. As an example, we might ask ourselves, “Do people have adequate access to health care?” Increasing use of the emergency room for non-emergency purposes could be an indicator that they do not.

For the purposes of this project, special groups known as Technical Advisory Committees (TACs) developed over one hundred quality-of-life indicators. These committees were represented by a rich mixture of professionals, advocates, and community volunteers, all of whom were experts in the respective areas under review.

The TACs used special criteria to develop the quality of life indicators used for this project. These criteria stipulated that indicators need to be understandable to the general user and the public, responsive quickly and noticeably to change, relevant for policy decisions, and available annually.

## Key Quality of Life Indicators

In addition to quality of life indicators, this community assessment model also uses Key Indicators to present a snapshot of the changing conditions in each area. This snapshot is meant to be readily understood by the general public. The Key Indicators are not necessarily the most important quality of life indicators, but the most indicative of the overall condition of that particular subject area. If Key Indicators are improving or worsening, it is likely that trends in the whole area are moving in the same direction.

## Primary Data

### *Indicator Selection*

Measures of community progress depend upon consistent, reliable, and scientifically accurate sources of data. As noted previously, one of the types of data gathered for this project is primary data. The central primary data is a telephone survey of a sample of Santa Cruz County residents. There is much to be learned from people’s perceptions of

their community, especially when those perceptions contradict the empirical evidence about its conditions. For instance, in the area of public safety, crime rates may be going down while perceptions of danger are going up.

For this reason, Applied Survey Research conducts a telephone survey, in both English and Spanish, with over 700 randomly selected County residents. The intent of the survey is to measure the opinions, attitudes, desires, and needs of a demographically representative sample of the County’s residents. Respondents are asked open-ended questions as well as questions that present confined options. It should be noted that the telephone survey was not conducted in 2004, but resumed again in 2005 and will be conducted bi-annually hereafter.

### *Sample Selection and Data Weighting*

In 2005, telephone contacts were attempted with a random sample of residents 18 years or older in Santa Cruz County. Potential respondents were selected based on phone number prefixes, and quota sampling was employed to obtain the desired geographic distribution of respondents across the North and South County areas and the San Lorenzo Valley. Surveys were completed with 710 respondents in the County, and each completed survey took an average of 18.5 minutes.

As mentioned above, quotas were used with respect to respondents’ location of residence. The quotas were designed to obtain sufficient samples to allow generalization to the overall population within each of the three geographic areas (North County, South County, and the San Lorenzo Valley). This method of sampling necessitated an over-sample of the San Lorenzo Valley, relative to its proportion of the population of the entire County. This over-sampling of San Lorenzo Valley also allowed for reliable comparisons with the other two regions, and with respect to the overall survey results, was compensated for through a process of data weighting.

Data from the CAP year 11 survey was “weighted” along several demographic dimensions prior to data analysis. Data weighting is a procedure that adjusts for discrepancies between demographic proportions within a sample and the population from which the

sample was drawn. For example, within the CAP year 11 survey, the sample was 57.3% female and 42.7% male, whereas the population in Santa Cruz County is very near to evenly split between the two genders. When the data is weighted to adjust for the over-sampling of females, answers given by each female respondent are weighted slightly downward, and answers given by each male respondent are weighted slightly upward, thus compensating for the disproportionate sampling.

The survey data for CAP year 11 were simultaneously weighted along the following demographic characteristics: gender, ethnicity, income, and geographic location. Weighting for both ethnicity and gender was performed to be region-specific (based on 2000 Census data) to account for differences across the three regions of Santa Cruz County. The weighted data was used in the generation of the overall frequency tables, and all of the cross-tabulations, with the exception of the regional comparisons. For the regional comparisons, the regional weights were dropped so that the San Lorenzo Valley oversample could be utilized.

Two important characteristics of weighted data need to be mentioned. First, within a weighted data set, the weight of each person's responses are determined by that individual's characteristics along the weighted dimensions (gender, ethnicity, income, geographic location). Thus, different respondents will have different weights attributed to their responses, based on each person's intersection along the three weighted demographic dimensions. Further, the weights that are produced are fractional, and the counts within frequency tables are of these individual-specific fractional values rather than counts of individuals, considering each respondent equally.

### *Sample Representativeness*

We are 95% confident that the opinions of survey respondents do not differ from those of the general population of Santa Cruz County by more than +/- 3.7%. This "margin of error" is useful in assessing how likely it is that the responses observed in the sample would be found in the population of all residents in Santa Cruz County if every resident were to be polled. For example, within the CAP year 11

sample, 48.3% of respondents indicated that they used the library on a regular basis. Therefore, we are 95% confident that across all residents of Santa Cruz County the percentage of people that use the library regularly is between 44.6% and 42.0% (48.3% +/- 3.7%).

The geographic quota sampling produced a confidence interval of +/- 6.5% at the level of each of the three geographic regions (North County, South County, and the San Lorenzo Valley). This confidence interval can be applied when examining the results of the regional comparisons.

It is important to note that the margin of error is increased as the sample size is reduced. This becomes relevant when focusing on particular breakdowns or subpopulations in which the overall sample is broken down into smaller groups. In these instances, the margin of error will be larger than the initially stated interval of 3.7%; this margin of error only applies to the overall sample.

It should be understood that all surveys have subtle and inherent biases. ASR has worked diligently with the project committee to reduce risks of bias and to eliminate identifiable biases. One remaining bias in this study appears in the area of respondent self-selection, the capturing of opinions only of those willing to contribute approximately 20 minutes of their time to participate in this community survey.

### *Data Analysis*

Significance testing on the overall CAP year 11 data was performed using chi-square tests in combination with confidence interval estimations, to determine whether differences observed within the CAP year 11 data would be likely to be expected across the population of the entire Santa Cruz County. An asterisk indicates when statistically significant differences were found in the overall survey data. In addition, a detailed listing of questions with statistically significant findings is included in the appendix.

### *Analysis of Breakdowns*

Significance testing between subpopulations in the CAP year 11 report was conducted using confidence interval comparisons. For each comparison tested, 95% confidence intervals were calculated for the proportions observed in each of the groups (e.g., the percentages of males and females who reported regularly using the library, respectively). These confidence intervals represent the interval within which we have 95% confidence that the population proportion for each group would be found. If the confidence intervals around the proportions of the groups being compared (males vs. females) do not overlap, statistical significance is reported. This means that we would be 95% confident that a difference would exist in the population between the proportion of men who would respond “yes” and the proportion of women who would respond “yes” to this question. In a similar manner, this type of statistical testing for significant differences between groups was performed for all possible comparisons in cross-tabulations containing more than two groups. For example, in the region breakdown, each of the following comparisons was tested: South County vs. North County, South County vs. San Lorenzo Valley, and North County vs. San Lorenzo Valley. An asterisk indicates when significant differences were found in the survey data, and asterisks are provided identifying which specific comparisons were significant. In addition, a listing of sub-group comparisons specifying which were found to be statistically significant is included in Appendix II.

When a cross-tabulation is performed, only those respondents for whom we have information on the variable of interest are able to be included. For example, if a respondent does not provide his/her age, we could not include this person in our age cross-tabulation. Therefore, the number of respondents included in a cross-tabulation will often be less than the overall number of respondents who completed the survey. In general, it is not uncommon for respondents to not answer every question on a survey.

### **Secondary Data**

Secondary data is collected from a variety of sources, including but not limited to: the U.S. Census; federal, state, and local government agencies; academic institutions; economic development groups; health care institutions; libraries; schools; local police, sheriff and fire departments; and computerized sources through online databases and the Internet.

### *Note on Population Figures*

Unless otherwise noted, population data is drawn from the California Department of Finance’s annual estimates for January of each year.

### **California Health Interview Survey, 2001 and 2003**

Some responses from the California Health Interview Survey (CHIS) are included in the Health section in this report. CHIS is the largest health survey of its kind in the nation. Further, CHIS is the largest telephone survey in California, in 2001 interviewing one randomly selected adult in 56,270 households and in 2003 interviewing one adult in 42,044 households. Further, the survey reached 5,801 adolescents (ages 12-17) in 2001 and 4,010 in 2003, and, through interviewing their parent, 8,526 children under age 12 in 2003. The major areas covered in the survey include health-related behaviors, health insurance coverage, health status and conditions, and access to health care services. To ensure diverse populations were included in the survey, telephone interviews were conducted in six languages: English, Spanish, Chinese (Mandarin and Cantonese dialects), Vietnamese, Korean, and Khmer (Cambodian).

### **Data Presentation**

As was begun with Year 6, demographic breakdowns of survey results are presented on the web rather than in the report. (The overall results continue to remain in the report, and demographic comparisons on key indicators appear throughout the document.) Question-by-question cross-tabulations for ethnicity, region, age, gender and income are available on the Applied Survey Research Website at: [www.appliedsurveyresearch.org](http://www.appliedsurveyresearch.org).

## What's Next?

As the Community Assessment Project enters its thirteenth year it will continue to evolve to provide the most useful and up-to-date information for the residents of Santa Cruz County to use in their community improvement initiatives.


Among the improvements include a state-of-the-art website ([www.santacruzcountycap.org](http://www.santacruzcountycap.org)) that will be continuously updated as new quality of life indicators become available. Charts and graphs of the data along with the entire report can now be downloaded for reports and funding proposals.





The Community Survey continues to be conducted every other year so that special studies and reports on particular community issues and population groups can be done in alternate years.

The Community Goals for the year 2010 have been determined involving more than 1,000 community members, stakeholder groups, and organizations. Committed groups and organizations are now being solicited to champion the community involvement necessary to achieve the Community Goals. The following groups led the community goal-setting process: The Workforce Investment Board, The Volunteer Center, Ecology Action, The Health Improvement Partnership Council, the County Probation Department, and representatives of Cabrillo College.

The Community Assessment Project Steering Committee and financial sponsors have affirmed their commitment to provide the most accurate information available so that the people of Santa Cruz County can continue their efforts to make the quality of life here the best it can be.

## Legend

<b>No. County</b>	North County – includes Bonny Doon, Capitola, Davenport, Live Oak, Santa Cruz, Scotts Valley and Soquel
<b>So. County</b>	South County – includes Aptos, Corralitos, Freedom, La Selva Beach, Pajaro and Watsonville
<b>SLV</b>	San Lorenzo Valley – includes Ben Lomond, Boulder Creek, Brookdale, Felton, Lompico, Mount Hermon and Zayante
	Indicates a question for which percentages do not total 100 because each respondent was allowed to select more than one answer
*	Indicates statistically significant differences in survey responses between sub-groups in the 2003 telephone survey data. Absence of this symbol indicates no statistical significance differences between sub-groups for the 2003 data. For comparisons involving more than 2 groups (region, age, and income), footnotes at the bottom of the page indicate which specific comparisons are significant. See Appendix II for a complete list.

✓	Indicates a Key Indicator
	Indicates that no new data for a particular indicator are available
<b>% Change</b>	Describes a change in value between the current and first year's data. This only applies when the data are <i>not</i> percentages or rates
<b>Net Change</b>	Describes the net change between the current and first year's data
	Denotes a telephone survey question
	Indicates a community profile
	Indicates data from the California Health Interview Survey (CHIS), 2001
NA	Indicates data are not available
- (dash)	Indicates that it would not be correct to calculate this value

## Suggested Uses of this Report

Due to the wide scope, it will take each reader some time to become familiar with the data and format of the CAP report. There is a wealth of information on a wide range of issues in each of six research areas – Economy, Education, Health, Public Safety, Natural Environment, and Social Environment. This section is provided to make the report more useful by illustrating possible applications of the data within it.

The Steering Committee recommends that each reader first review the opening page of each of the sections, which begins by listing the

Community Goals specific to the content of that section. Next is a summary that includes graphs of the Key Indicators for that section, which are measures that are suggestive of the overall condition of the section's particular subject area. The summary also details noteworthy findings within each section, going beyond the Key Indicators to pull scores of items into a cohesive story.

The majority of each section contains the presentation of (primary) data from telephone surveys of County residents, as well as

(secondary) data collected from hundreds of stakeholders throughout the County and beyond. This detailed information is useful not only to understand the County holistically, but also to focus on specific issues of import or interest to the reader. For example, the data may help identify new customers or emerging needs, or explain changes in the local environment that will have an impact on your business or organization.

In the following paragraphs, we present four levels at which the data gathered for this study might be utilized.

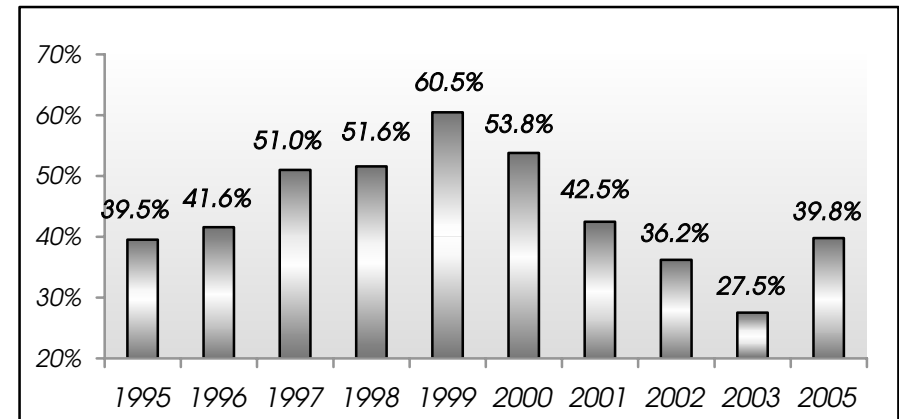
## Core Information about the County and its Directions

One use of the CAP data is by citizens and visitors, as well as businesses in the area or ones considering coming here. The CAP reports summarize hundreds of issues to help understand what is unique about the County, using the most recent and powerful data available, including established sources as well as an original survey.

## Trends That Impact Businesses and Organizations

While the CAP data are useful for point-in-time descriptions of various issues, the ten-year scope of the CAP project also allows comparisons of these snapshots across many years. Both primary and secondary data are presented across several years (as available) in table or chart form. Indeed, one of the most informative features of this report is precisely this trend data. This data allow the reader to see not only where the County is, but where it has been.

For example, consider the following bar chart which summarizes “yes” answers to the question, “Do you feel you are better off this year than last year (economically)?” from all twelve years of the CAP study. This data assesses respondents’ sense of their own financial well-being.



Even a quick glance shows that the percentage (or proportion, or sub-sample) who said “yes” increased at least a small amount each year from 1995 through 1999. In other words, personal perceptions of financial well-being were on the upswing for five consecutive years, with notable jumps in 1997 and 1999.

However, respondents to the 2000 survey indicated a strong sign of concern: The proportion who said “yes” dropped 6.7%, well before economists were predicting that the high-tech downturn would spread to other sectors and the economy in general. And the 2003 survey data show an even larger drop. The percentage of respondents who said they felt better off this year than last year fell 8.7% from 2002 and a full 33% from 1999. Luckily, data from 2005 show another upswing in the percentage of residents reporting feeling better off economically this year than last year.

The most recent four years of data show that sense of financial well-being in the County has weakened, and that the former upswing has decidedly reversed. However, data from CAP year 11 indicate that some improvement is happening. The trends provided by the CAP data are thus powerfully descriptive – and the reader need only glance at the length of bars to see the path of each trend.

## Breakdowns That Increase Understanding of Particular Subgroups

In many places, particularly with data from the telephone survey, results have also been disaggregated by ethnicity, age, gender, income, and geography. These demographic variables allow a deeper level of analysis. The combination can be powerful as well as persuasive, without needing a substantial background in statistics or mathematics.

To continue the previous example, looking at those who said “yes” they “feel... better off this year than last year (economically),” consider the percentages if we isolate each income group separately:

By Income	1999	2000	2001	2002	2003	*2005
\$34,999 per year or less	42.6	39.4	42.8	30.5	22.3	28.7
\$35,000 - \$65,499 per year	65.9	59.4	39.6	38.5	35.1	41.2
Over \$65,500 per year	79.5	70.9	46.5	44.4	32.4	49.7

For example, while 39.8% of the sample as a whole said “yes,” only 28.7% of those earning \$34,999 or less annually said “yes.” In other words, residents with lower incomes were less likely than other income groups to say they are better off this year than last. By contrast, those earning \$35,000 - \$65,499 per year and those earning over \$65,000 annually were more likely to say yes (41.2% and 49.7%, respectively) than those earning \$34,999 or less.

These breakdowns also allow one more step to ensure that the results are completely understood. The asterisk preceding “2005” in that table’s column heading indicates that the differences for that column are statistically significant. Every survey has a small amount of error, because a small sample is used to find out about an entire population (ASR’s scientific methods of random sampling, quota sampling, and demographic analysis ensure that the sample is sufficient to say things about the County’s population of over 260,000 people).

Similar findings throughout the report will help service organizations, government agencies, and others to pinpoint how different parts of the County’s population are experiencing changes. For example, if we know that the recent economic pinch is harder on lower income residents, relief in the form of services or credits can be targeted at those individuals.

Similar results throughout the report might suggest regional or ethnic differences in the need for some services, which would tell providers something about the languages or locations they should target.

The entire survey and a description of statistically significant results are available in the appendix section of this report. More information about the demographic breakdowns is available on the ASR Website: [www.appliedsurveyresearch.org](http://www.appliedsurveyresearch.org).

## Additional Data to Support or Refine Your Work

The information in each CAP report is intended for use in your own services and products, including other reports and proposals, and as a baseline for performance systems. Display graphics are available for much of the data, as are trained presenters who can speak to groups about the information within and behind this report.

Data in this report can be mixed and matched to help agencies determine their clients’ needs. Special reports can be created to reflect targeted populations, and cross-comparisons can be established with data from other projects. Please contact ASR for assistance or to contract for such deliverables.

## Acknowledgments

### Applied Survey Research

Project Directors: Susan Brutschy and Kelly Pleskunas

Analysts and Researchers: Laura Connery, Shannon Fulton, Ken Ithiphol, Tracy Keenan, Jill Leufgen, Holly Maclure, Hope Malcom Maltz, Mónica Morales, Javier Salcedo, Abbie Stevens, Peter Theodore, Ash Vandersteen, Deanna Zachary

### Steering Committee Members

Carol Adams  
Dominican Hospital

Rowland Baker  
County Office of Education

Donna Blitzer  
University of California, Santa Cruz

Jess Brown  
Santa Cruz County Farm Bureau

Susan Brutschy  
Applied Survey Research

Paula Comunelli  
SCC Coalition for Mental Health

Judy Cox  
Santa Cruz County Probation Department

Christina Cuevas  
The Community Foundation of Santa Cruz County

Karen Delaney  
Volunteer Center

Cecilia Espinola  
County of Santa Cruz, Human Resources Agency

Ana Espinoza  
City of Watsonville

### United Way

Mary Lou Goeke, Executive Director  
Michelle Stephenson, Director of Administrative Services

Peggy Flynn  
ETR Associates

Dan Haifley  
O'Neill Sea Odyssey

Erika Hearon  
Live Oak Family Resource Center

Tom Honig  
Santa Cruz Sentinel

Mary James  
Housing Authority of Santa Cruz County

Christine Johnson-Lyons  
Community Action Board

Scott Kennedy  
Resource Center for Nonviolence

Rama Khalsa  
County of Santa Cruz, Health Services Agency

Kathleen King  
Pajaro Valley Community Health Trust

Kirsten Liske  
Ecology Action

Mario Maldonado  
City of Watsonville

Paul O'Brien  
Santa Cruz Community Counseling Center

Rock Pfothenhauer  
Cabrillo College

Kelly Pleskunas  
Applied Survey Research

Elsa Quezada  
Central Coast Center for Independent Living

Janet Reed  
Community Volunteer

Susan Rozario  
Santa Cruz County Sheriff's Office

Barry C. Samuel  
Santa Cruz County Parks Department

Sam Storey  
Community Bridges

Arcadio Viveros  
Salud Para La Gente Inc.

George Wolfe, M.D.  
Community Volunteer

## Community Assessment Project Year 12 Financial Sponsors

AT&T	Community Bridges	Seniors Council
Cabrillo College	Community Foundation of Santa Cruz	Sutter Maternity & Surgery Center
City of Capitola	County of Santa Cruz Human Resources Agency	University of California, Santa Cruz
City of Santa Cruz	Dominican Hospital	Volunteer Center
City of Scotts Valley	First 5 Santa Cruz County	Waste Management of Santa Cruz County
City of Watsonville	Pajaro Valley Community Trust	Watsonville Community Hospital
Coast Commercial Bank	PG&E	
Community Action Board	Santa Cruz Community Counseling Center	

*A very special thank you to all of those who contributed and helped locate secondary data for this year's CAP report. Agencies and organizations are cited as sources, but the assistance of individuals has been critical.*

## 2006 Community Goals & Heroes

Each year the Santa Cruz Sentinel, in association with the United Way, seeks nominations from the public of people who have worked toward meeting the CAP community goals in the past year.

The following community goals were selected by a broad cross-section of Santa Cruz County residents to guide decision-making, planning, and social action in the years to come. The purpose of these community goals is to focus attention and energy to improve the quality of life for the people of the County.

These community goals are generally broad in nature. Detailed action plans involving people from all sectors of the community must be developed to realize the community goals. In many ways, the community goals are interrelated. In some ways, they may even be in conflict or compete with each other for resources, energy, and attention.

These community goals are not intended to endorse or oppose any particular project or initiative. They do, however, chart the course for collective action to create a better future for the people of Santa Cruz County.



***Front Row (seated, left to right):*** Carmelita Austin-Schreher, Robert Rodriquez, Paul McGrath, Karina Cervantez

***Second Row:*** Victoria Williams, Terri Noto, Francisco Rodriquez, Lee Mercer, Jim Howes

***Third Row:*** Chris Tracy, Sybil Anderson-Adams, Jennifer Laskin, Mardi Wormhoudt, Marcia Soler, Gail Cosby

***Fourth Row:*** Elise Perlin, Roberta Bristol, Nancy Gammons, Linda Clevenger

***Fifth Row:*** Veronica Foos, Jimmy Cook, Jim Naragon, Linda Robinson, Charles Paulden

***Not pictured:*** Maria Callejas, Deborah Blumberg, Roberta DePiano, Patrick J. Fitz, Suzanne Koebler, Judy Leguillon, Nell Newman, Rob Mullens, Bob Rittenhouse, Edie Rittenhouse

## Economy

- Goal 1** By the year 2010, the annual Median Family Income will increase by a higher percentage than the Bay Area Consumer Price Index.
- Goal 2** By the year 2010, housing will be available and affordable to meet the needs of the local work force.
- Goal 3** By the year 2010, county performance in key economic sectors such as agriculture, tourism and retail will meet or exceed the state average.

## Education

- Goal 1** By the year 2010, more students will be working at grade level with a curriculum that spirals in rigor throughout the K-14 system.
- Goal 2** By the year 2010, more students will be ready for college and transfer ready from the community college into four-year colleges and universities.
- FRANCISCO RODRIGUEZ  
*PAJARO VALLEY UNIFIED SCHOOL DISTRICT*
- JENNIFER LASKIN  
*TEACHER AT RENAISSANCE HIGH SCHOOL*
- Goal 3** By the year 2010, more schools will have a pre-kindergarten program available for all children.
- GAIL COSBY, MARCIA SOLER, MARIA CALLEJAS, ROB MULLENS,  
ROBERTA DEPIANO, AND JUDY LEGUILLON  
*COASTAL COMMUNITY PRESCHOOL*

## Health

- Goal 1** By the year 2010, Santa Cruz County residents will have improved access to primary, specialty and emergency medical services. Appropriate planning and training will have been accomplished for medical response to disasters.
- CARMELITA AUSTIN-SCHREHER  
*ABC HEALTH GROUP*
- Goal 2** By the year 2010, 80% of healthcare providers will use Health Information Technology to improve patient safety, enhance healthcare systems efficiency, and provide community-wide secure health data to improve population health for Santa Cruz County residents.
- Goal 3** By the year 2010, 75% of Santa Cruz County residents over the age of 60 will receive education and information regarding end of life choices and opportunities; thus empowering them to make self-determined decisions regarding health care.
- LINDA ROBINSON  
*OMBUDSMAN PROGRAM*
- Goal 4** By the year 2010, the prevalence of childhood obesity in Santa Cruz County will be reduced by 5%.
- LEE MERCER  
*SECOND HARVEST FOOD BANK*
- NANCY GAMMONS  
*WATSONVILLE FARMER'S MARKET*

## Public Safety

**Goal 1** By the year 2010, crime within Santa Cruz County will continue to decrease and residents will have increased confidence in their personal safety at home and in the community.

—LINDA CLEVNEGER

—JIM HOWES

*SANTA CRUZ POLICE DEPARTMENT PUBLIC SERVICES DEPARTMENT*

—MARDI WORMHOUDT

**Goal 2** By the year 2010, children in Santa Cruz County will live in safer families and communities.

—SYBIL ANDERSON-ADAMS, ELISE PERLIN, VICTORIA WILLIAMS, JIMMY COOK, CHRIS TRACY, VERONICA FOOS, AND TERRI NOTO  
*SANTA CRUZ FAMILY & CHILDREN'S SERVICES*

## Social Environment

**Goal 1** By the year 2010, more people will be educated and engaged in activities that strengthen our community and civic life.

—NELL NEWMAN  
*NEWMAN'S ORGANICS*

—KARINA CERVANTEZ  
*COMMUNITY ACTION BOARD*

—BOB RITTENHOUSE, EDIE RITTENHOUSE, ROBERTA BRISTOL  
*COMMUNITY VOLUNTEERS*

**Goal 2** By the year 2010, families and children will have access to the information, resources and support they need to succeed.

—ROBERT RODRIGUEZ

**Goal 3** By the year 2010, all people in Santa Cruz will have a way to meet their basic needs for food, housing, healthcare, childcare and transportation.

—JIM NARAGON  
*FAMILIES IN TRANSITION*

—DEBORAH BLUMBERG  
*COMMUNITY VOLUNTEER*

**Goal 4** By the year 2010, Santa Cruz County residents with physical, psychiatric and development disabilities will have access to community services needed to ensure integration and inclusion in all facets of community life.

—SUZANNE KOEBLER

## Natural Environment

**Goal 1** By the year 2010, the health of rivers and the ocean is improved by reducing erosion, reducing pollution and increasing summer stream flows.

—PATRICK J. FITZ  
*COMMUNITY VOLUNTEER*

**Goal 2** By the year 2010, open space is preserved and increased while the percentage of housing units is increased which are environmentally sound, green, affordable, and near transit and job centers.

—CHARLES PAULDEN  
*COMMUNITY VOLUNTEER*

**Goal 3** By the year 2010, single-passenger auto use is reduced by improving cyclist safety, increasing miles of bike lanes and increasing use of public transportation.

—PAUL MCGRATH

# Community Heroes 1996-2005

## Year 11, 2005

Lisa Dobbins, Action Pajaro Valley  
Scott MacDonald, Santa Cruz County Probation Department  
Dave Bartlett, Court Appointed Special Advocates (CASA)  
Kay Bartlett, Court Appointed Special Advocates (CASA)  
Catherine Cooper, UCSC Department of Psychology  
Elizabeth Dominguez, Cabrillo College  
Joya Winwood, Mothersong  
Foster Anderson, Shared Adventures  
Tom Webster, Community Volunteer  
Judy Webster, Community Volunteer  
Clay Kempf, Regional Diabetes Collaborative  
Wells Shoemaker, M.D., Physicians' Medical Group  
Lynda Lewit, Santa Cruz County Health Services Agency  
Maria Cristina Negrete, Community Volunteer  
Juan Gomez, Reclaiming Futures and Friday Night Live  
Brenda Armstrong, Santa Cruz County Health Services Agency  
Matt O'Brien, Team Member with Quest4aCure  
Danielle Winkler, Team Member with Quest4aCure  
Ryan McNamara, Team Member with Quest4aCure  
Leslyn McCallum, Train of Consciousness  
Tamara Doan, Coastal Watershed Council  
Austin Armstrong, Community Volunteer  
Carol Whitehill, Watsonville Wetlands Watch

## Year 10, 2004

Luis Alejo, CRLA / Watsonville Schools  
Piet Canin, Bike to Work Program  
Cathy Cavanaugh, Community Bridges WIC Program  
Karen Christensen, Santa Cruz County Resource Conservation District  
Jinny Corneliussen, Jack Farr, and Theresa Kramer, Alzheimer's Association of Santa Cruz Volunteers  
Melissa Cowles, Community Volunteer  
Selby Drake, Suicide Prevention Center Volunteers Ecology Action  
Marcia "Duffy" Grant, Community Volunteer  
Anita Ibarra, Community Action Board  
Gail Levine, Branciforte Elementary  
Elnora Lewis, Community Volunteer  
Phil Reader, Community Volunteer  
Ride a Wave and Balance 4 Kids  
Jerri Ross, Santa Cruz County Health Care Outreach Coalition  
Patricia Schroeder, Student Health Services  
Jaime Molina, County Mental Health Services  
Judy Williams, Community Volunteer

## Year 9, 2003

Dan Cope, Special Education Local Planning Area

Don Eggleston, New School

Jill Gallo, Community Volunteer

Mary Hammer, Community Volunteer

Mas Hashimoto, Japanese American Citizens League

Roland and Violetta Law, Community Volunteers

Dean Lundholm, Pleasant Acres Tenant Association

Marcia Meyer, Childcare Ventures

Omega Nu

Yolanda Perez-Logan, Probation Department

Amy Pine, Survivors Healing Center

R.E.A.L.

Randy Repass, West Marine

Joseph Rivers, Dragonslayers

Ann Ruper, Volunteer Book Buddy

Theresa Thomae, Small Business Development Center

Phyllis and Dick Wasserstrom, Community Volunteers

George Wolfe, Community Volunteer

## Year 8, 2002

Mary Balzer, SPIN

Ruth Barker, We Care Program

David Beaudry, Community Builder

Michael Bethke, Community Volunteer

Toni Campbell

Angie Christmann, Land Trust of Santa Cruz County

Jena Collier, Health Families

Daniel Dodge, Community Activist

Heather Hite

Deutron Kebebew, UCSC

Marq Lipton, Seaside Company

Ellen Moir, New Teacher Center

Jorge Sanchez, Si Se Puede

Paul Tutwiler, Volunteer

Jim Van Houten, Community Volunteer

Linda Wilshusen, Live Oak Neighborhood Organization

Martina Zamilpa, Catholic Charities

## Year 7, 2001

Jane Barr, Mid Peninsula Housing

Jess Brown, Santa Cruz County Farm Bureau

Virginia Butz

Alie Carey, Y.E.S. School

Destiny Castillo, Y.E.S. School

Amy Christey, Santa Cruz County Sheriff's Department

Aurelie Clivas, San Lorenzo Valley Healthy Start

Diane Cooley, Community Volunteer

Jonathan Cornejo, Head Start

Blanca Corrales

LaRue Foster, Ombudsman

Scott Kennedy, Santa Cruz City Council

Ken Meshke

Carrol Moran, UCSC Education Partner CTR

Chrissie Morrison, Y.E.S. School

Theresa Ontiveros, Planned Parenthood

Sally Smith, Surfrider Foundation

Barbara Sprenger, San Lorenzo Valley Teen Board

Jonas Stanley, San Lorenzo Valley Healthy Start

Lillian Westerman, Santa Cruz County Office of Education

Mike Wilker, CCIC Lutheran Church

## Year 6, 2000

Jay Balzar, Dientes  
Steve Beedle, Santa Cruz Tech Alliance  
Kathy Bernard, Pajaro Valley Housing Corporation  
Janet Boss, Boys and Girls Club of Santa Cruz County  
Noah Brown, Youth Services  
Judy Cox, Santa Cruz County Probation Department  
Pam Elders, Head Start  
Aranda Guillermo, c/o Don Eggleston  
Francisco Jimenez, Student / Magic Apple  
Janice Jimenez, Student / Magic Apple  
Rama Khalsa, Health Services Agency  
Bryan Loehr, Redwood Elementary  
Vickie Morales, Santa Cruz County Probation Department  
Bob Munsey, Crow's Nest  
Dee O'Brian, Walnut Avenue Women's Center  
Dennis Osmer, Energy Services  
Laura Segura-Gallardo, Watsonville Parks and Recreation  
Larry Tierney, Park Maintenance  
Siri Vaeth, Big Brothers / Big Sisters

## Year 5, 1999

Steve Belcher, Santa Cruz Chief of Police  
Pat Clark, NAACP  
Karen Delaney, Volunteer Center  
Pam Falke  
Lisa Fraser, Principal Aptos Junior High  
Girl Scouts of the Monterey Bay Volunteers  
John Janzen, Silicon Systems  
Majel Jordan, Elderday

Irvin Lindsey, Outdoor Science Experience  
Mary Jo May  
Jack O'Neill, O'Neill Sea Odyssey  
Jane Scherich  
Michael Schmidt, Santa Cruz Chamber  
Tim Siemsen  
Erica Terence  
Arcadio Viveros, Salud Para La Gente  
Elisabeth Vogel, Mercy Charities Housing

## Year 4, 1998

Patricia Arana, ALTO  
Edison Jensen, Attorney  
Susan Olsen, El Pajaro Community Development  
Linda Perez, Pajaro Valley Prevention and Student Assistance  
Maria Roman, Community for Violence Reduction  
Manny Solano, Watsonville Police Department  
Triangle Speakers  
Bill Watt, Families in Transition  
Sue Wilson, Grandma Sue's  
Bruce Woolpert, Granite Rock

## Year 3, 1997

Ciel Benedetto, Santa Cruz Women's Health Center  
Dana Blumrosen, Street Youth Program  
Kimberly Carter, Above the Line  
Sharon Kinsey, Volunteer  
Erik Larsen, Resource Center for Nonviolence  
Norm Lezin, Delta School  
Mark Ligon, Every Fifteen Minutes

Paula Mahoney, Every Fifteen Minutes  
Maria Martinez, Head Start Volunteer  
Bob McKinley, Every Fifteen Minutes  
Michael Pruger, Every Fifteen Minutes  
Maggie Reynolds, Children's Alliance  
Patty Sapone, Every Fifteen Minutes  
Ray Shurson, Every Fifteen Minutes

## **Year 2, 1996**

Paul Brindel, Community Action Board  
Judy Darnell, Volunteer  
Linda Fawcett, League of Women Voters

Andrea Garcia, El Comite / Esperanza  
Fred Keeley, SCCHO  
Nancy Macy, Volunteer  
Alan McCay, SCCHO  
Terry Medina, Watsonville Police Chief  
Michael Molesky, El Comite / Esperanza  
Mónica Morales, Brown Berets  
Harvey Nickelson, Coast Commercial Bank  
Juana Ortiz-Gomez, El Comite / Esperanza  
Leonard Smith, Pros for Youth  
Marion Taylor, League of Women Voters  
Marisa Villalon-Chapman, El Comite / Esperanza